



2 ZIMMER WOHNUNG, 1140 VIENNA

Quiet and cozy apartment in Breitensee

Object number: EMZJ1

[View and rent online](#)

The apartment is located in a quiet residential area close to Schönbrunn. Very well connected to public transport, e.g. 5min walking to the next subway station.

Period	25/03/ - 25/04/2025
Number of persons	2
Total incl. VAT.	€ 1.359,00
Security deposit	€ 1.000,00



Living space

43m²



Maximum occupancy

4 Persons



Complete accommodation [?]

1 private bathroom 1 Separated bedroom 1 Living-Sleepingroom



1. floor



Check-in

11:00 - 20:00 Clock



Check-out

07:00 - 12:00 Clock

Sleeping options

Sleeping room



1x Double bed (1,60 m x 2 m)

Living and sleeping



1x Sofa bed (2 persons)

Descripton of accommodation

The apartment is in a typical old Viennese building (Built in ~1900) with high ceilings, modernly renovated. Despite its size it feels quite spacious due to its good room layout. In Winter the heating comes from the floor which is creating a very pleasant atmosphere. If you like, you can also use the wood oven for an even cozier atmosphere. All important infrastructure is available and in walking distance: Subway, Fast train, trams, multiple grocery stores, restaurants, pharmacy / hospital, Palace of Schönbrunn, a big nice park, very bike friendly street towards the center. Two bikes can be locked in the green inner courtyard. The TV is a smart TV and cannot receive traditional TV stations.

Equipment features

Basic equipment

- Garden sharing
- TV
- Bedclothes
- Private toilet
- Iron & ironing board
- Hairdryer
- Internet/Wifi
- Private washing machine
- Towels
- Vacuum cleaner
- Cleaning utensils

Fireplace

- Sweden Stove

First supply

- Toilet paper
- Nespresso capsules

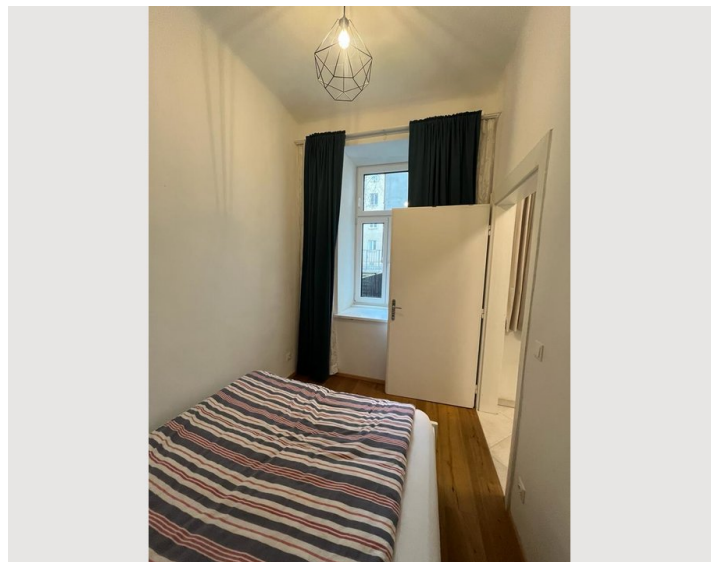
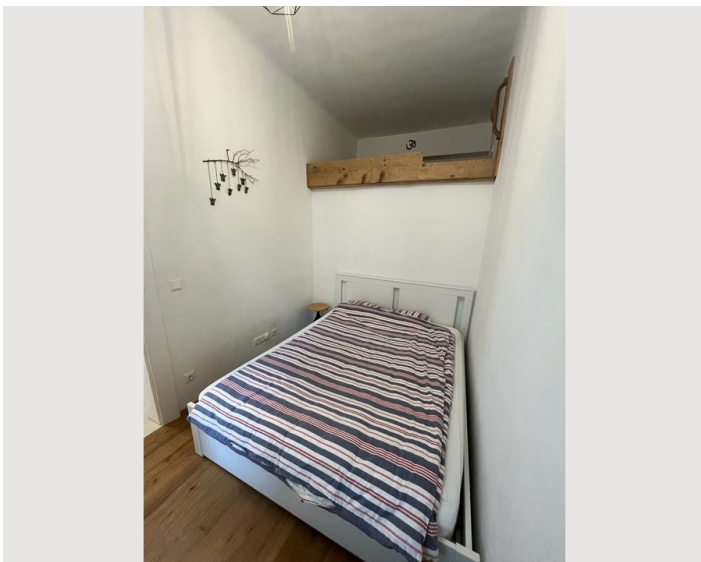
Kitchen

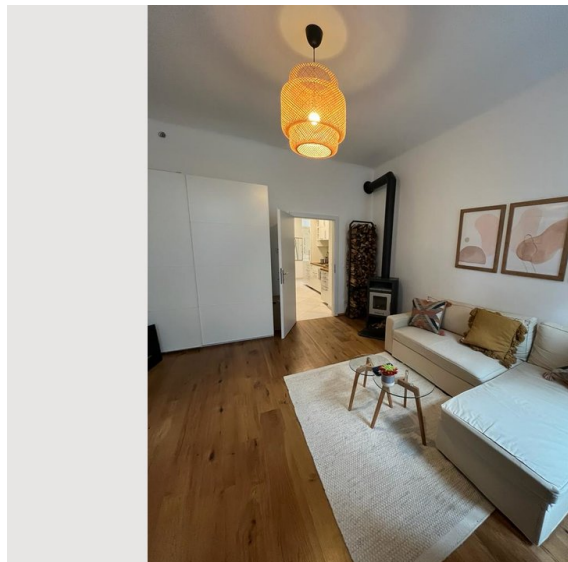
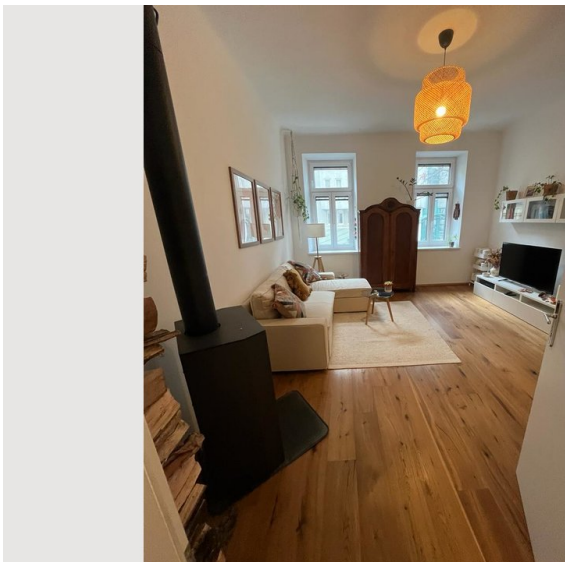
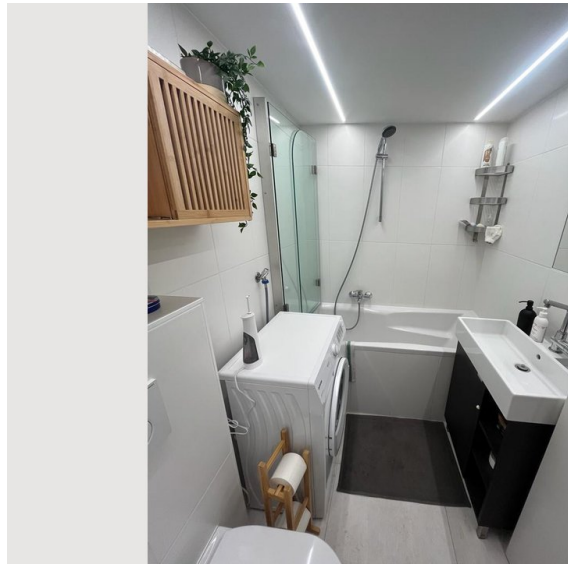
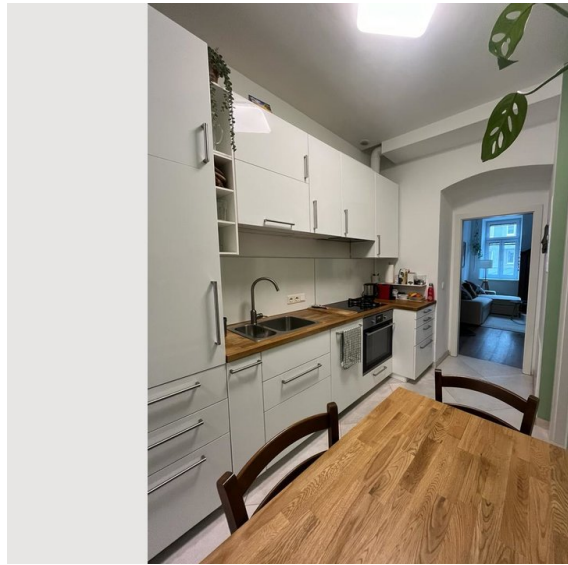
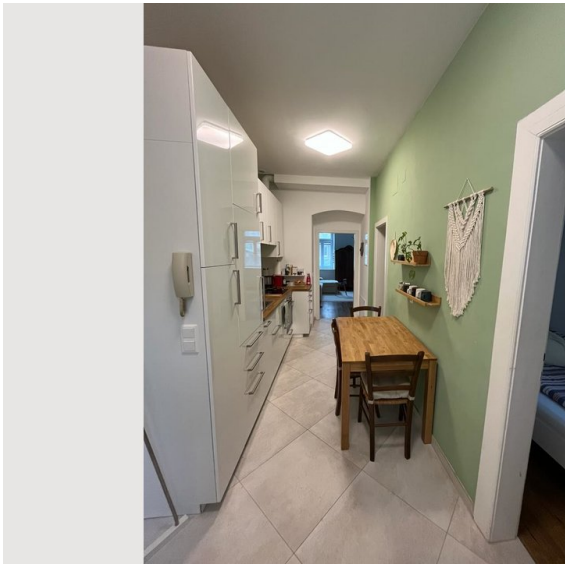
- Private kitchen
- Glasses/Tableware
- Dishwasher
- Cooking utensils
- Espresso machine

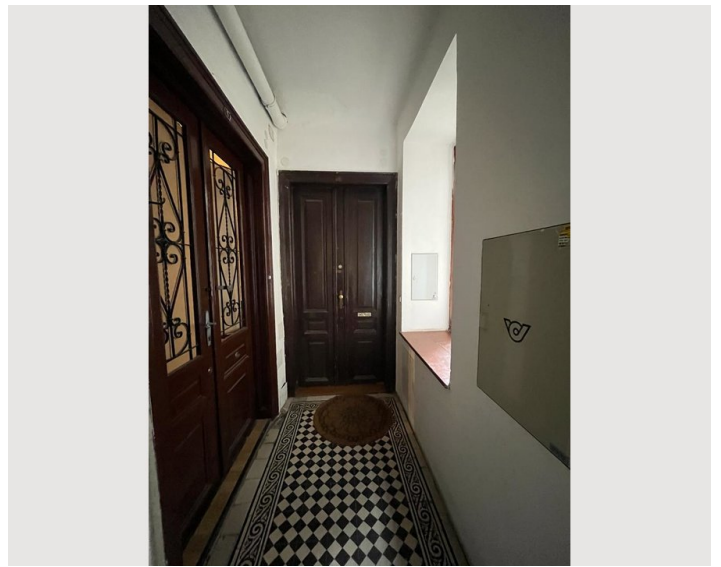
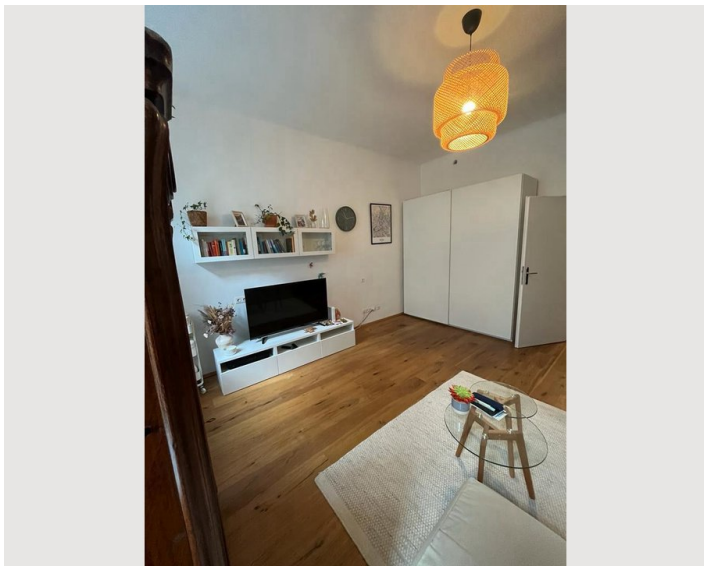
Informations

- Suitable for children
- Short-term parking zone subject to a charge
- Private entrance
- Bicycle room free of charge
- Smoking not allowed
- Desk/Workplace
- Pets forbidden


Picture gallery










Infrastructure

 Billa, Billa+, Spar, DM, Bipa, etc in walking distance

 About 20minutes to the city center (Stephansplatz)

 The next station (Westbahnhof) is reachable within 15 minutes

 U3 Hütteldorfer Straße in 5 minutes walking distance

All important infrastructure is available and in walking distance: Subway, Fast train, trams, multiple grocery stores, restaurants, pharmacy / hospital, Palace of Schönbrunn, a big nice park, very bike friendly street towards the center. Two bikes can be locked in the inner courtyard.

Location

