

2 ZIMMER WOHNUNG, 1120 VIENNA

## Eddie's Sweet Home

Object number: NTWJ1

[View and rent online](#)

This fully furnished apartment in the immediate vicinity of Meidling train station promises you the perfect balance between big city flair and privacy.

<b>Period</b>	09/07/ - 09/08/2025
<b>Number of persons</b>	2
<b>Total incl. VAT.</b>	€ 1.574,34
Security deposit	€ 1.200,00



### Living space

55m²



### Maximum occupancy

4 Persons



### Complete accommodation <sup>?</sup>

1 private bathroom 1 Living-Sleepingroom



### 5. floor

Elevator available



### Check-in

12:00 - 23:59 Clock



### Check-out

11:00 - 12:00 Clock

## Sleeping options

### Living and sleeping



1x Double bed (1,40 m x 2 m)



1x Sofa bed (2 persons)

## Descripton of accommodation

The apartment is equipped with all the amenities you may need during your stay. The new fitted kitchen is also in a separate room, where you can also eat your meals on the dining table. A lot of natural light enters through the large windows, so that a pleasant atmosphere can be felt in the loggia as well as in the remaining living rooms. But you can also use the seating comfortably. On the left are two height-adjustable bar stools with a round rotating table. \*living/sleeping area\* The large pull-out couch with armrests on both sides and an adjustable headboard offers you a generous seating area but also a high level of sleeping comfort. The box spring bed with a comfortable height and the flat screen TV hanging across from it ensure exciting film evenings.

## Equipment & Features



### Basic equipment

- Loggia
- TV
- Bedclothes
- Private toilet
- Hairdryer
- Internet/Wifi
- Community washing machine
- Towels
- Vacuum cleaner



### First supply

- Toilet paper
- Soap
- shampoo
- Nespresso capsules



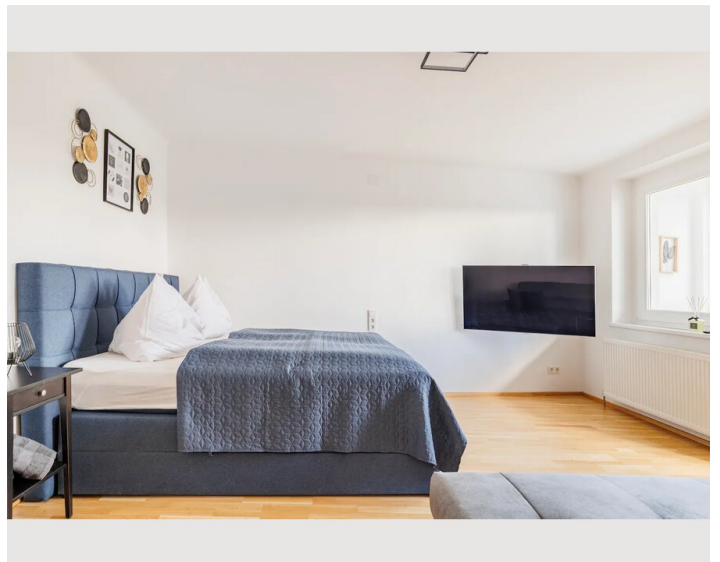
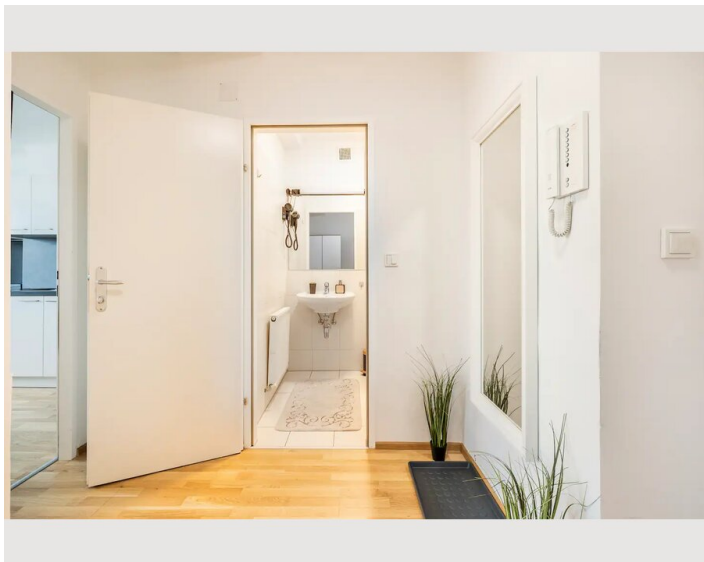
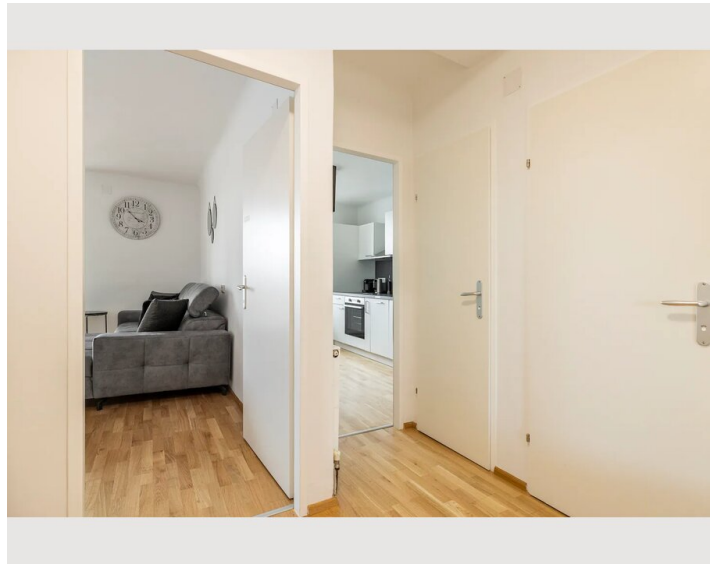
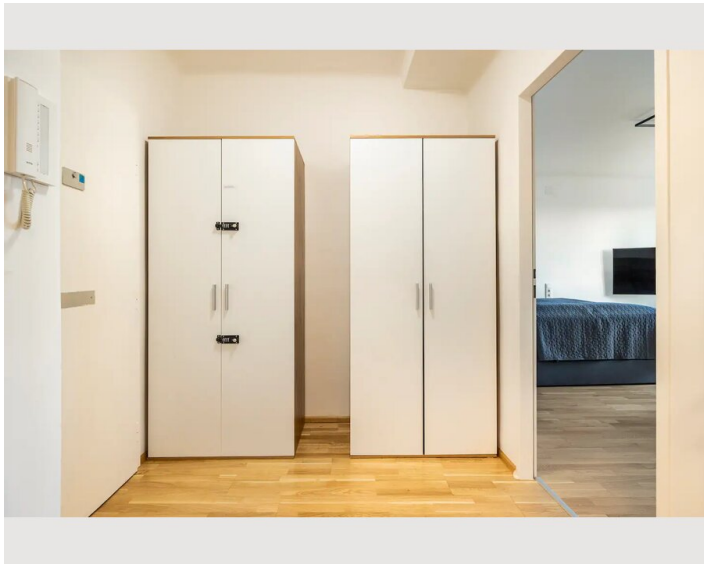
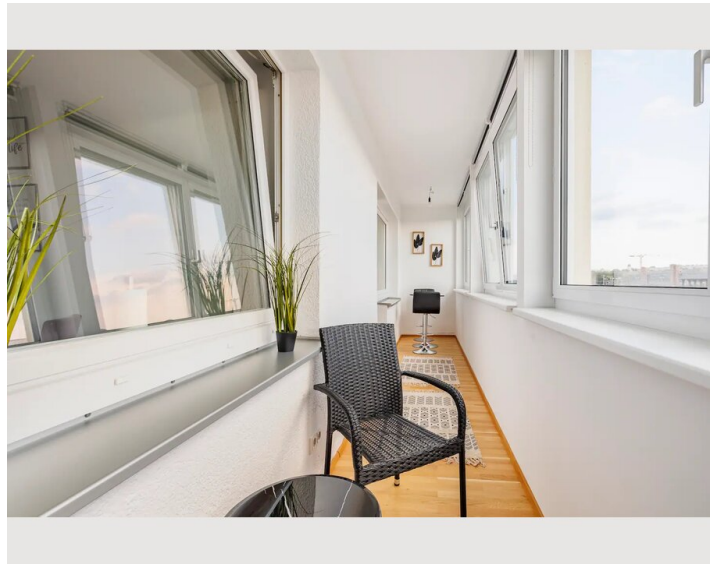
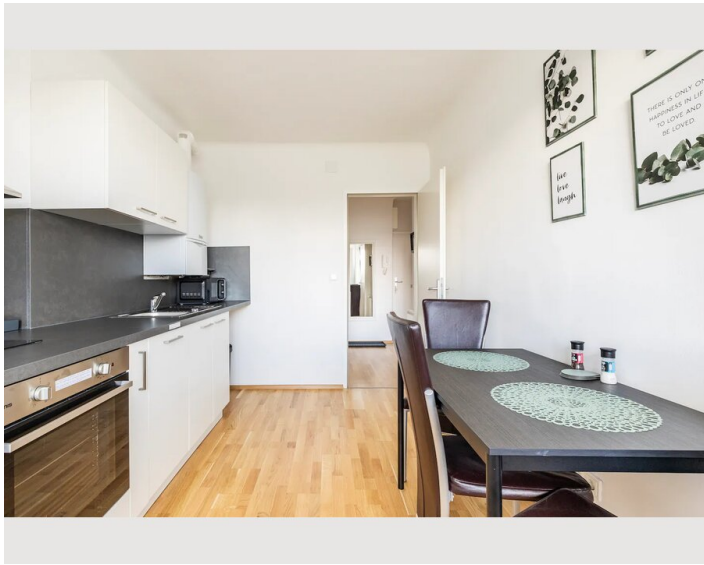
### Kitchen

- Private kitchen
- Glasses/Tableware
- Dishwasher
- Cooking utensils
- Espresso machine
- Microwave

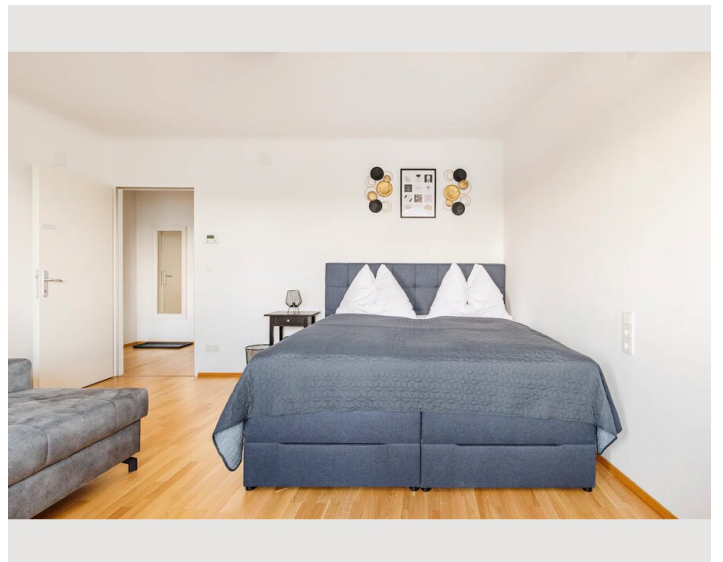
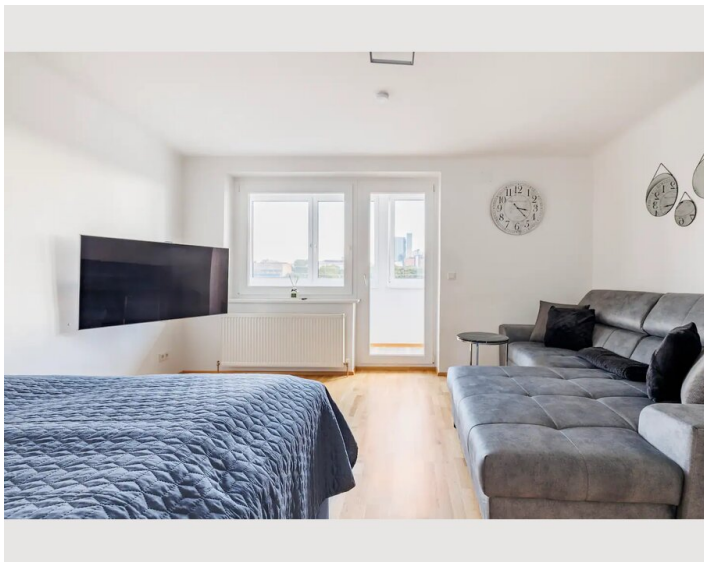
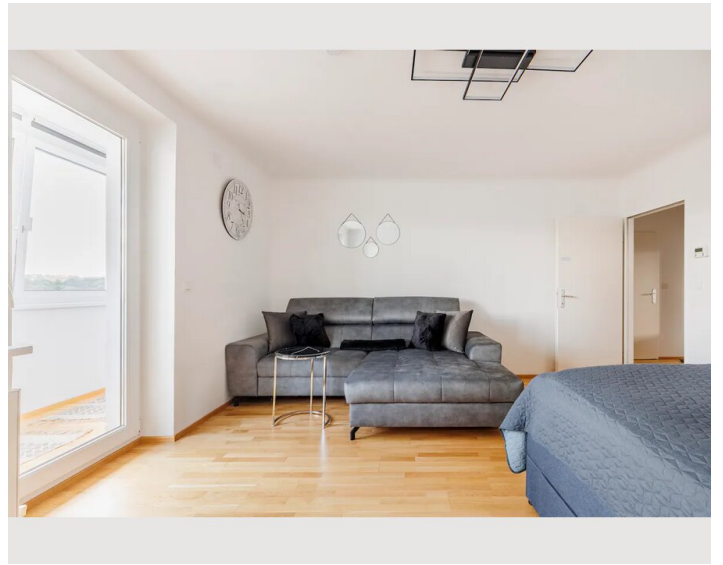
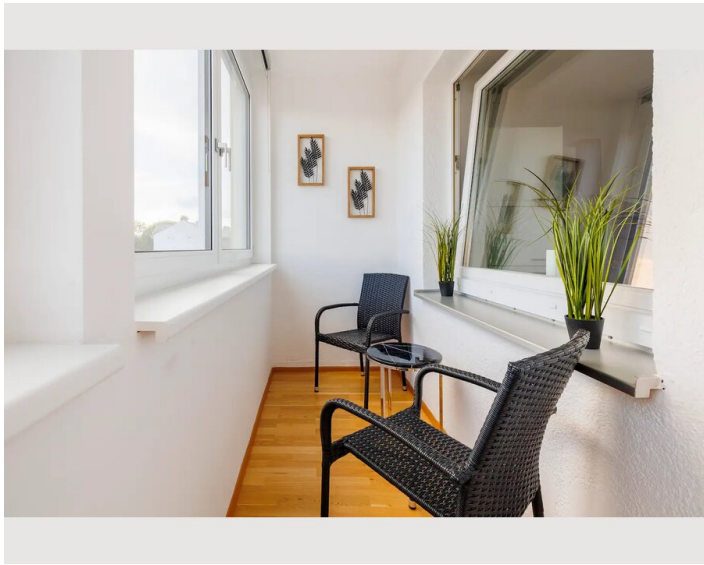
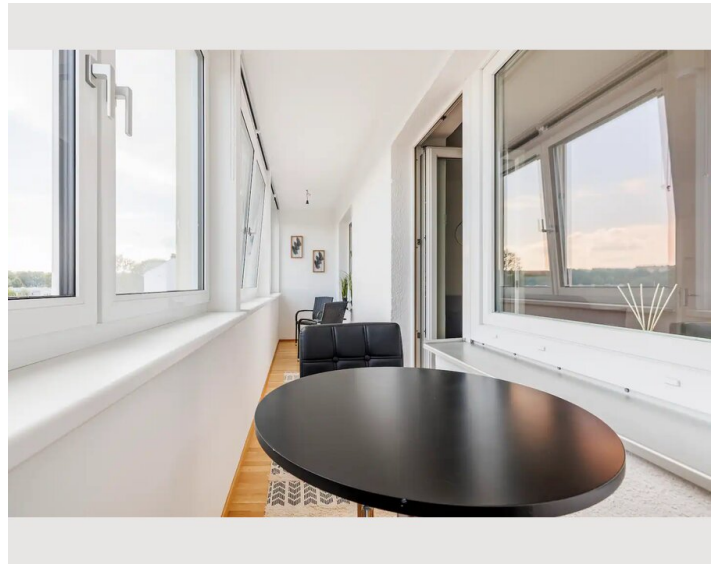
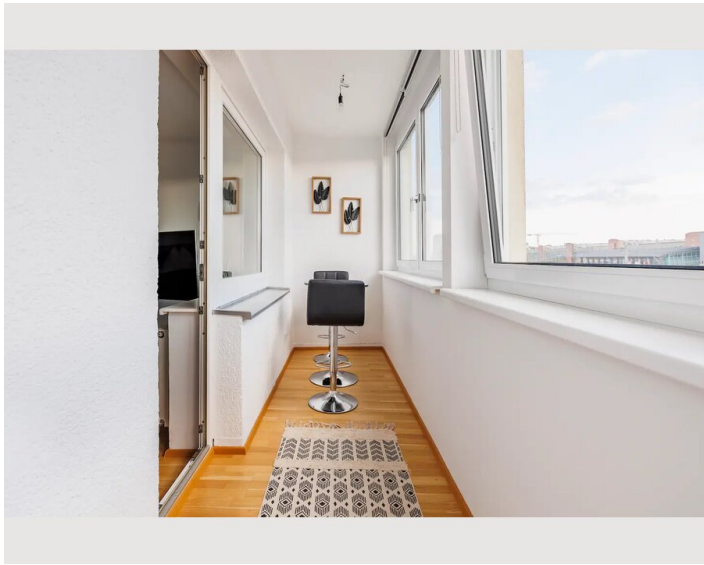
## Informations

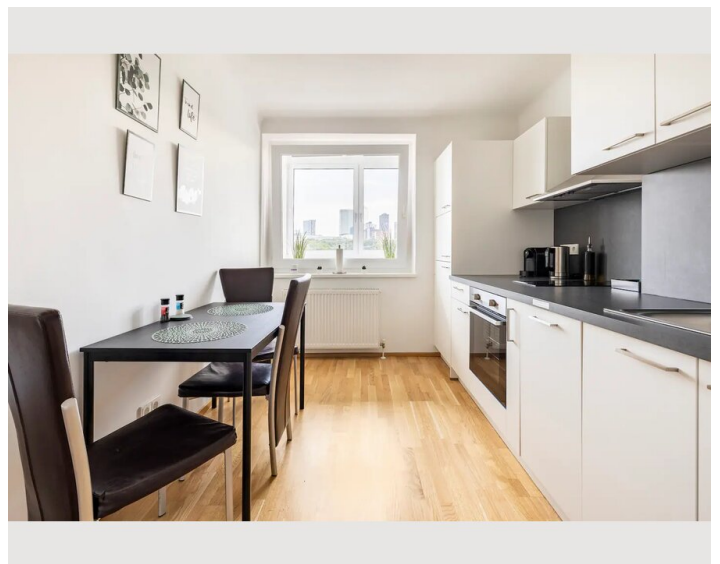
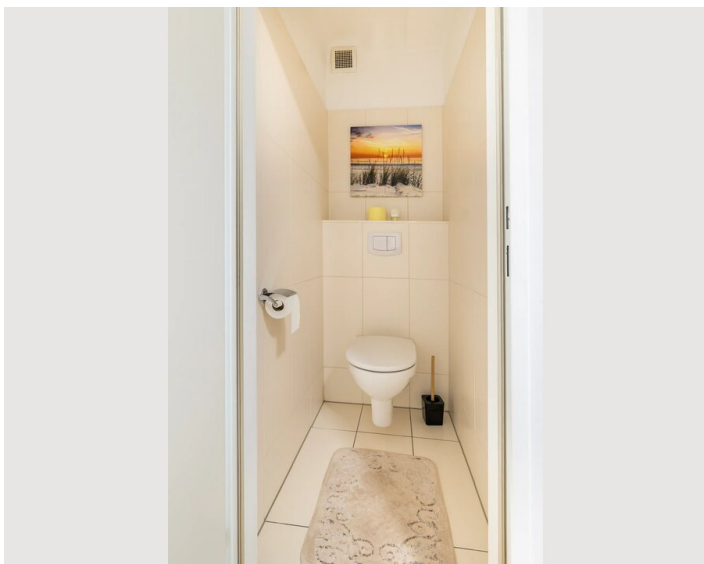
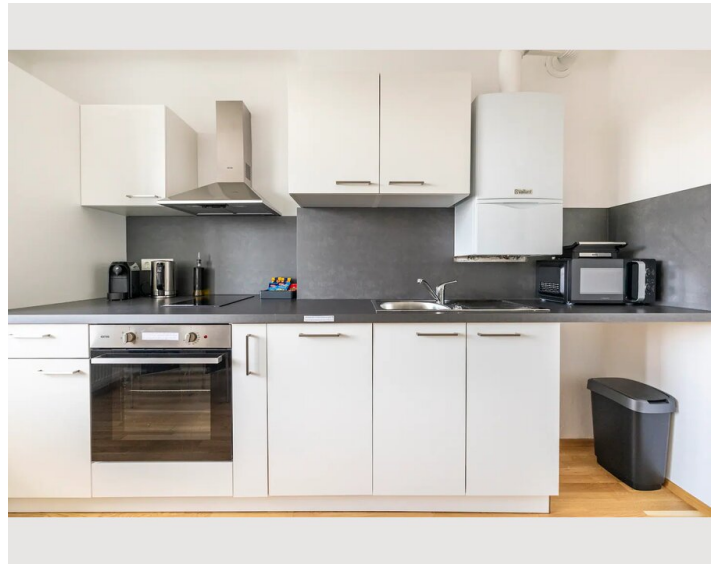
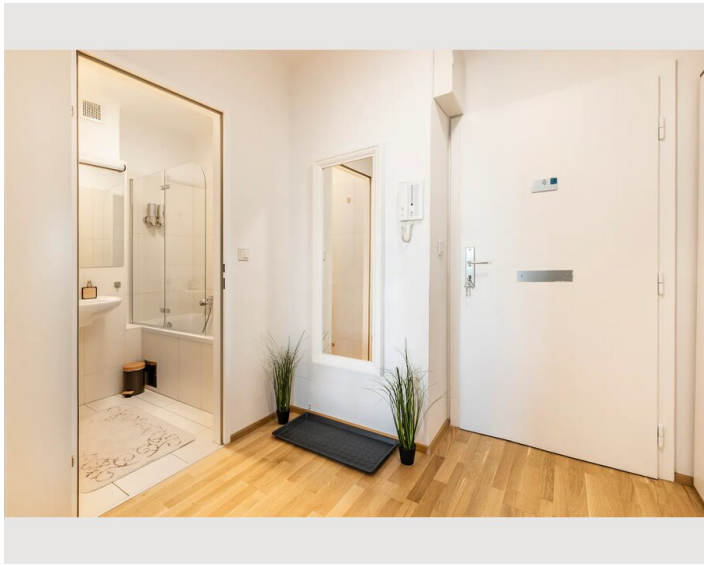
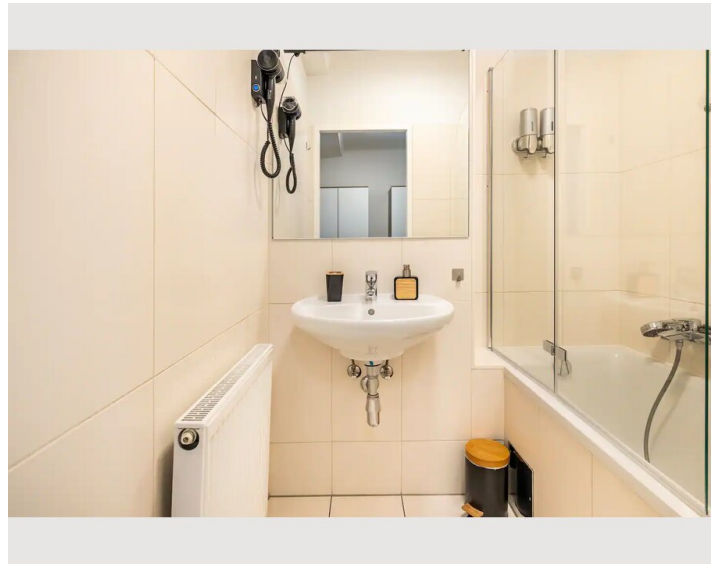
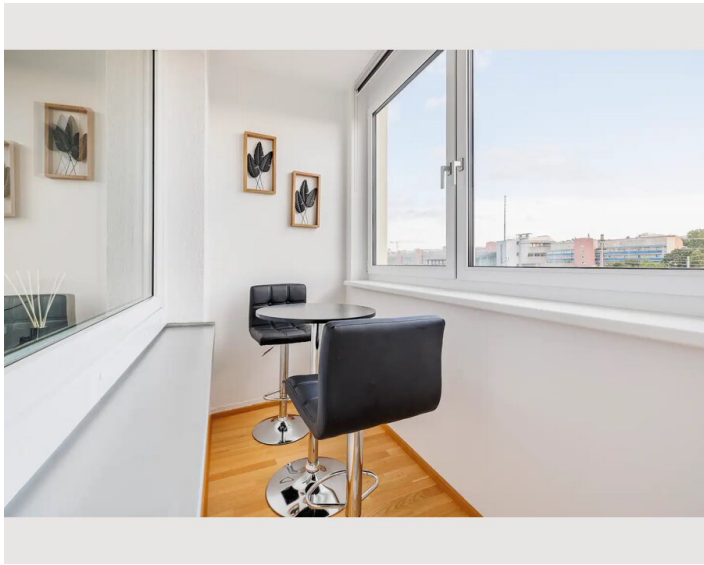
- Suitable for construction workers
- Smoking allowed
- Private entrance
- Bicycle room free of charge
- Suitable for children
- Short-term parking zone subject to a charge
- Pets on request

## Picture gallery











## Infrastructure

 Bahnhof Meidling

The apartment is well connected to the public transport network. Among other things, the U6 and the Badner Bahn (local train), but also the S-Bahn and tram can be reached in a few minutes on foot.

## Location

