



HOUSE, 4820 BAD ISCHL

Apartment 1st floor directly on the river

Object number: IPBY1

[View and rent online](#)

Period	09/12/2025 - 09/01/2026
Number of persons	2
Total incl. VAT.	€ 1.375,52
Security deposit	€ 1.100,00

Our apartment is in a secluded location directly on the Traun and invites you to enjoy nature in the adjacent garden. It is on the 1st floor of a two-family house along a private road



Living space

65m²



Maximum occupancy

3 Persons



Complete accommodation [?]

1 Private bathroom 2 Separated bedrooms



1. floor



Check-in

15:00 - 20:00 Clock



Check-out

12:00 - 12:00 Clock

Sleeping options

Bedroom 1



1x Double bed (2 m x 2 m)

Bedroom 2



1x Single bed

Descripton of accommodation

The apartment is divided into a spacious entrance hall, which offers enough space for storage, a fully equipped kitchen including a dining area, a bedroom with a double bed and a closet, a children's room, a bright bathroom including a toilet, bathtub, washing machine and towel dryer, and a sunny living room from which you can see directly onto the balcony with a view of Bad Ischl's local mountain "Katrin".

Equipment & Features



Basic equipment

- Balcony
 - Garden sharing
 - TV
 - Bedclothes
 - Private toilet
 - Parking on the road without time limit without any cost
 - Iron & ironing board
 - Hairdryer
 - Garden
 - Internet/Wifi
 - Private washing machine
 - Towels
 - Private parking space
 - Vacuum cleaner
 - Cleaning utensils
-



First supply

- Toilet paper
 - Soap
-



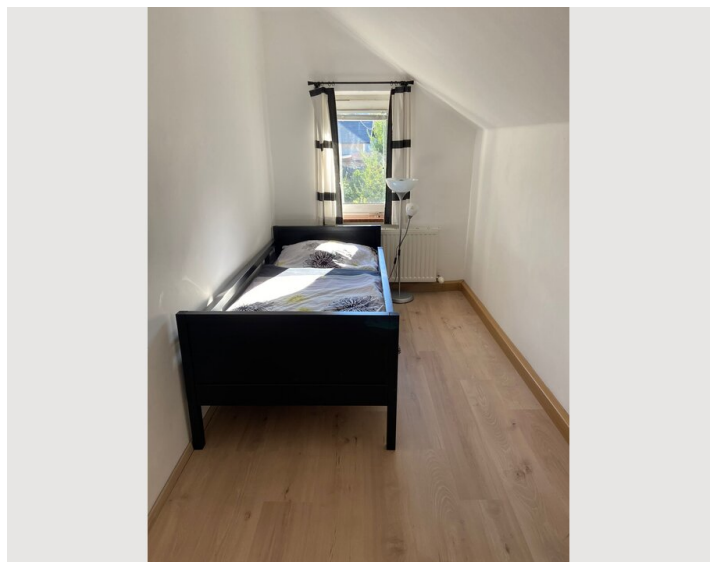
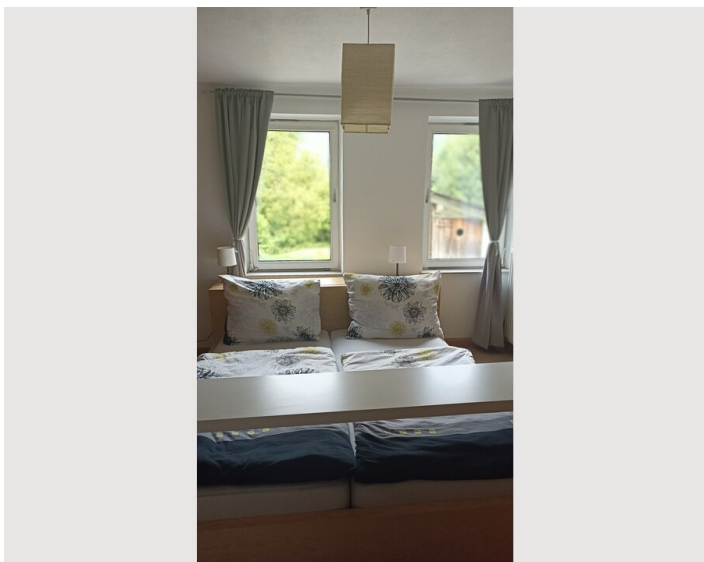
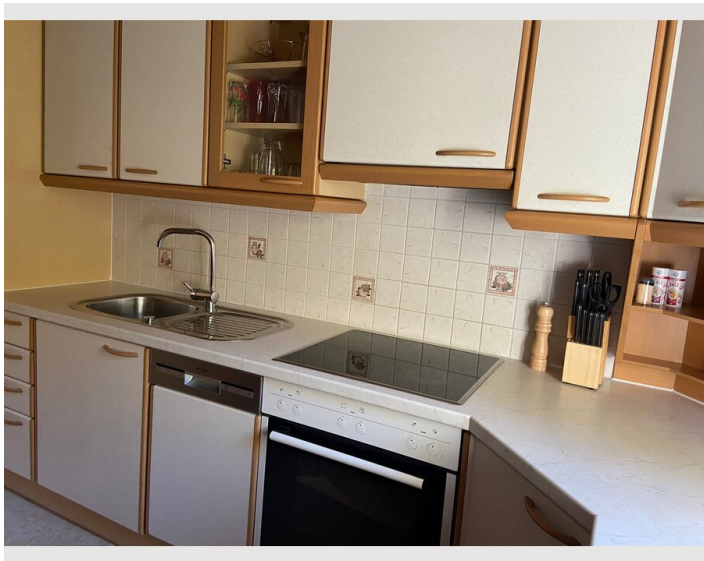
Kitchen

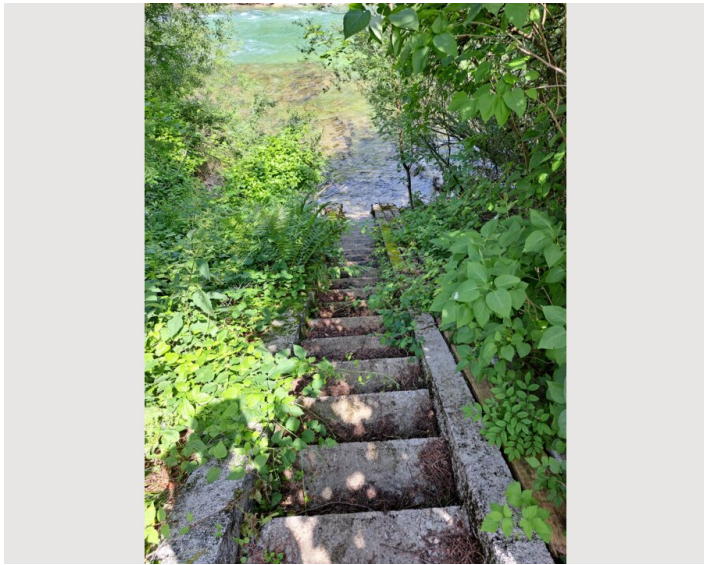
- Private kitchen
- Glasses/Tableware
- Dishwasher
- Cooking utensils
- Espresso machine
- Microwave

Informations


- Suitable for children
- Pets forbidden
- Smoking not allowed
- Bicycle room free of charge


Picture gallery







Infrastructure

 by foot in 10 minutes

 by foot in 15 minutes

 by foot in 10 minutes

 by foot in 10 minutes

Despite the very quiet location, public transport connections and the town centre of Bad Ischl are only a few minutes away on foot.

Location

