



2 ROOM APARTMENT, 4020 LINZ

## Charming cozy apartment in the center of Linz

Object number: IUSB1

[View and rent online](#)

|                          |                            |
|--------------------------|----------------------------|
| <b>Period</b>            | 21/12/2025 -<br>21/01/2026 |
| <b>Number of persons</b> | 2                          |
| <b>Total incl. VAT.</b>  | € 1.568,58                 |
| Security deposit         | € 1.200,00                 |

Very cozy, well-designed apartment in an apartment building on the 5th floor in the heart of Linz. 5 minutes walk from the Donaulände. Centrally located. All shops for daily needs nearby.



### Living space

50m²



### Maximum occupancy

2 Persons



### Complete accommodation <sup>?</sup>

1 Private bathroom 1 Separated bedroom



### 5. floor

Elevator available



### Check-in

14:00 - 18:00 Clock



### Check-out

08:00 - 11:00 Clock

## Sleeping options

### Sleeping room



1x Double bed (1,80 m x 2 m)

## Descripton of accommodation

Centrally located 2-room apartment with solid wood/custom and Biedermeier furniture, everything is there to feel comfortable! Unlimited internet, fully equipped kitchen: stove, microwave, coffee maker, toaster, fridge and freezer. Private washing machine in the bathroom with shower, separate toilet, bedroom with double bed, built-in wardrobes with plenty of storage space, living room with leather sofa and leather armchair, desk, Biedermeier dining table with two chairs. High-quality wool carpets in all rooms.

## Equipment & Features



### Basic equipment

- Internet/Wifi
- Private washing machine
- Towels
- Vacuum cleaner
- Cleaning utensils
- Music system/docking station
- Bedclothes
- Private toilet
- Iron & ironing board



### First supply

- Toilet paper
- Soap
- shampoo
- Fridge filling on request



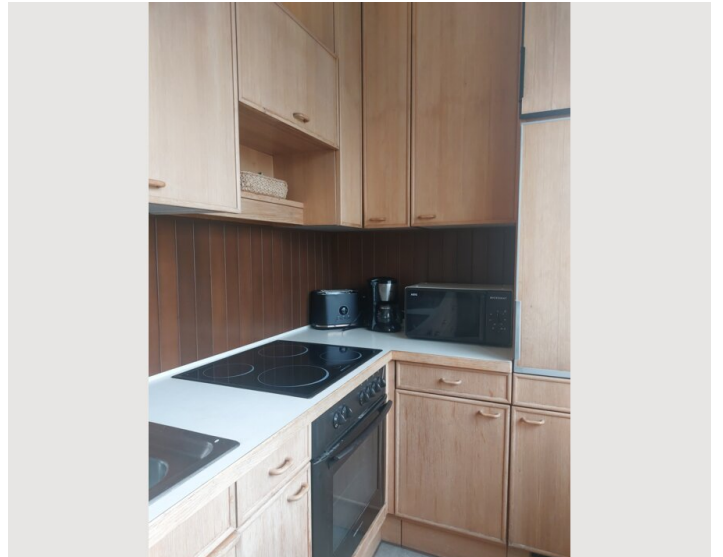
### Kitchen

- Private kitchen
- Glasses/Tableware
- Microwave
- Cooking utensils
- Filter coffee

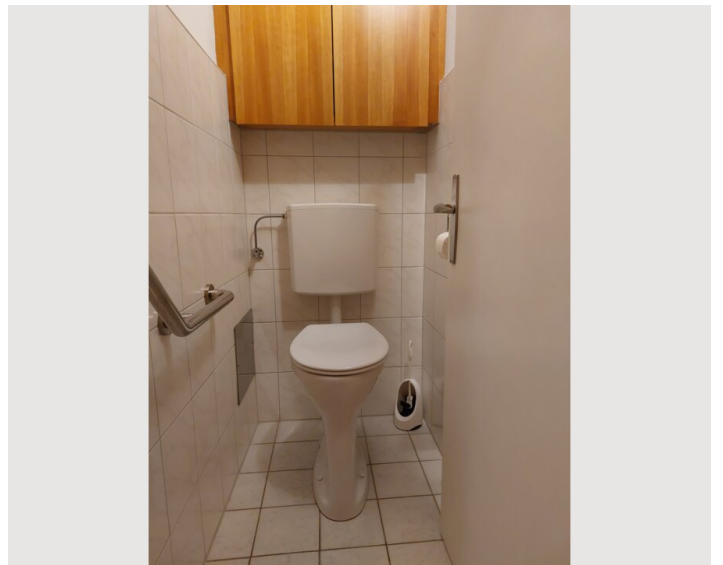
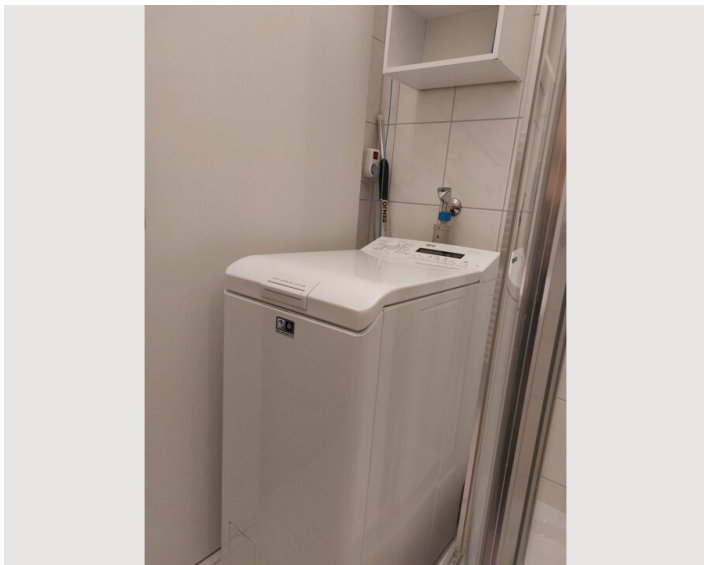
## Informations

- Smoking not allowed
- Desk/Workplace
- Pets forbidden
- Bicycle room free of charge
- Short-term parking zone subject to a charge
- Private entrance
- Regular cleaning at extra cost


## Picture gallery








### Infrastructure

 in front of the house

 5 minutes by car, 15 minutes on foot

The well-known Brucknerhaus concert hall is located diagonally opposite and can be reached on foot within 5 minutes, as is the local recreation area Donaulände (Park on the Danube).

Bus stops for the train station or Linz main square/center are located directly in front of the building; you can walk to the main square/Linzer Landstraße in about 15 minutes.

All shops for daily needs can be reached within a few minutes on foot; a bakery, a bank, a sports shop and a restaurant are located directly opposite the apartment building.

Location

