



STUDIO APARTMENT, 1120 VIENNA





Cosy Apartment Meidling




Object number: FSNI1

[View and rent online](#)

Period	10/06/ - 10/07/2026
Number of persons	2
Total incl. VAT.	€ 1.492,92
Security deposit	€ 1.100,00

The recently renovated apartment has 40 square meters and is located on the second floor. A kitchen, a flat-screen TV, a separate toilet and a shower will make your stay very comfortable.

-  **Living space**
38m²
-  **Maximum occupancy**
2 Persons
-  **Complete accommodation** 
1 Private bathroom 1 Living-Sleepingroom

-  **2. floor**
-  **Check-in**
15:00 - 20:00 Clock
-  **Check-out**
11:00 - 00:00 Clock

Sleeping options

Living & Sleeping



1x Double bed (1,60 m x 2 m)

Description of accommodation

The recently renovated apartment has 40 square meters and is located on the second floor. A kitchen, a flat-screen TV, a separate toilet and a shower will make your stay very comfortable. The bedroom with a 160*200 cm bed is very quiet and you will find plenty of space for your personal belongings. The pictures you see here have been taken without furnitures. But it has furnitures. Floor heating in bath room.

Equipment & Features

Basic equipment

- Internet/Wifi
- Private washing machine
- Towels
- Vacuum cleaner
- Cleaning utensils
- TV
- Bedclothes
- Private toilet
- Iron & ironing board
- Hairdryer

First supply

- Toilet paper
- Soap
- shampoo
- Fridge filling on request

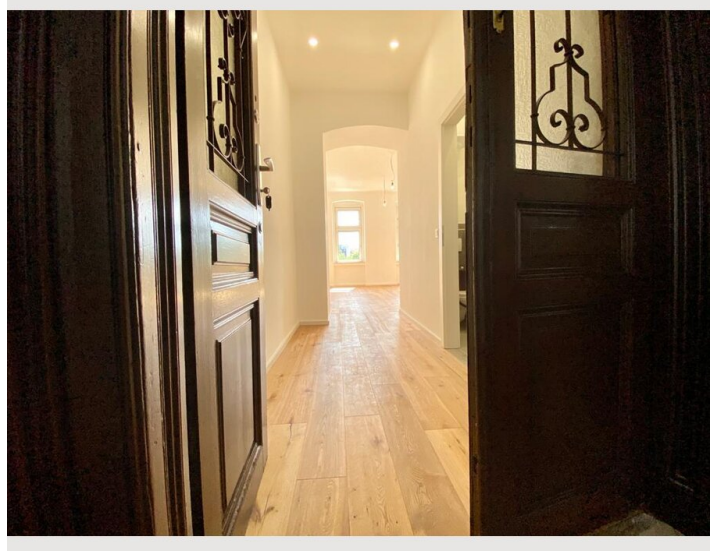
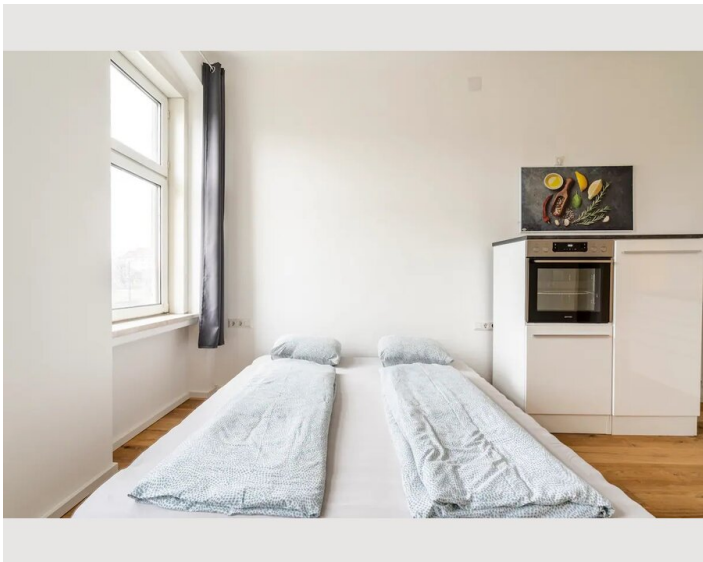
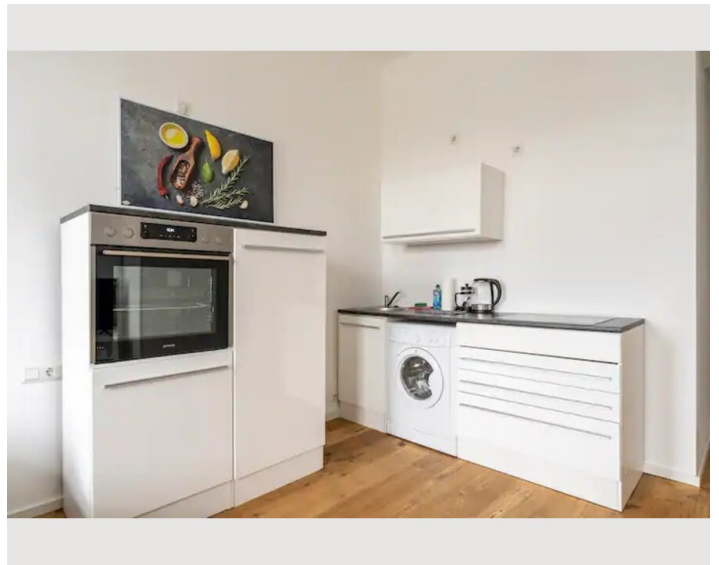
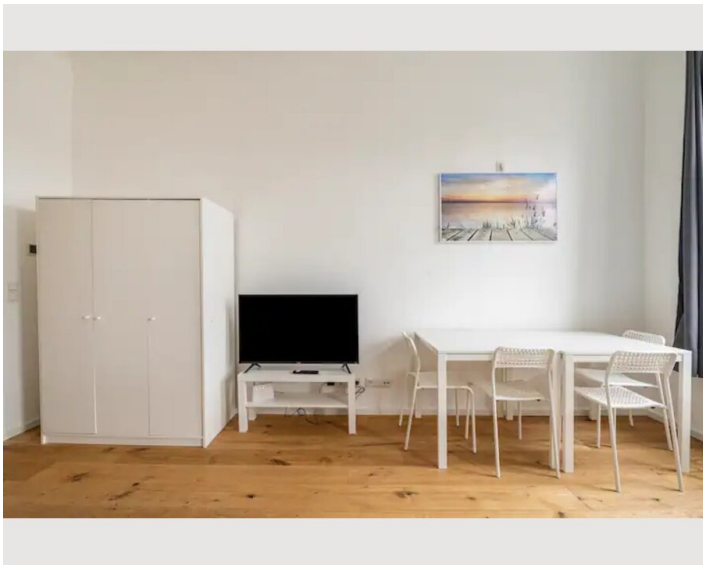
Kitchen

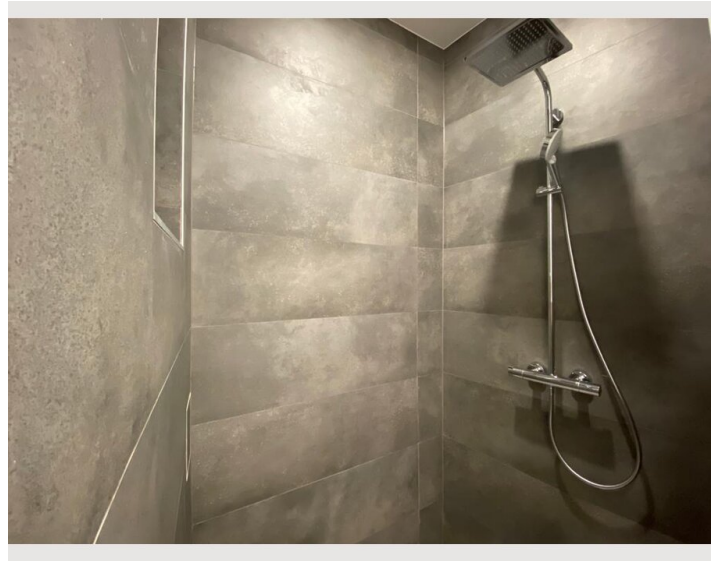
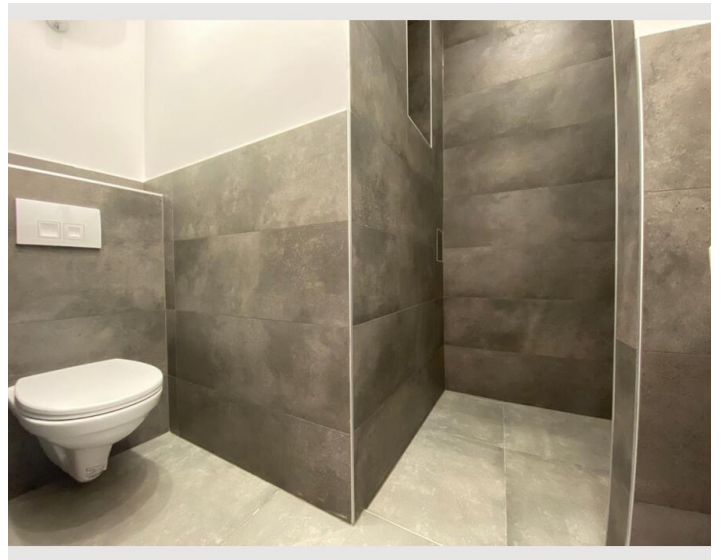
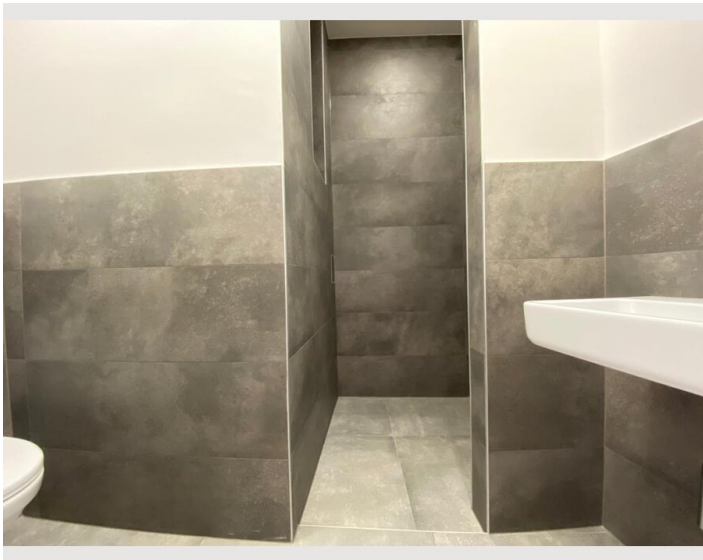
- Private kitchen
- Glasses/Tableware
- Dishwasher
- Cooking utensils
- Coffee machine

Informations

- Suitable for construction workers
- Smoking not allowed
- Pets on request
- Suitable for children
- Short-term parking zone subject to a charge
- Regular cleaning at extra cost

Picture gallery





Infrastructure



The Vienna Meidling train station is right outside the door and offers access to: Railjet, S-Bahn, subway, bus. Supermarkets and great restaurants within walking distance

Location

