

4 ROOM APARTMENT AND MORE, 1190 VIENNA

Beautiful 3 bedroom apartment

Object number: KOF51

[View and rent online](#)

This modern 4 rooms-apartment is available for rental. It is practical shaped & the 3 bedrooms are separately accessible. The apartment is therefor suitable for families, couples (with homeoffice) or as a shared apartment for students.

Period	18/04/ - 18/05/2026
Number of persons	2
Total incl. VAT.	€ 3.220,20
Security deposit	€ 2.500,00



Living space

75m²



Maximum occupancy

6 Persons



Complete accommodation [?]

1 Private bathroom 3 Separated bedrooms 1 Living-Sleepingroom



2. floor

Elevator available



Check-in

15:00 - 22:00 Clock



Check-out

08:00 - 12:00 Clock

Sleeping options

Bedroom 1



1x Double bed (1,80 m x 2 m)

Bedroom 2



2x Single bed

Bedroom 3



1x Bunk bed

Living & Sleeping



1x Sofa bed (1 person)

Descripton of accommodation

There is also a loggia to this apartment, which can be used as a balcony or as a extension to the living room. It gives the apartment an airy, bright atmosphere. A nice bathroom with a bath tub and an equipped kitchen makes the apartment an oasis of comfort.

Equipment & Features



Basic equipment

- Balcony
- Internet/Wifi
- Community washing machine
- Towels
- Vacuum cleaner
- Cleaning utensils
- Loggia
- TV
- Bedclothes
- Private toilet
- Iron & ironing board
- Hairdryer



First supply

- Toilet paper
- Soap
- Fridge filling on request
- shampoo
- Nespresso capsules



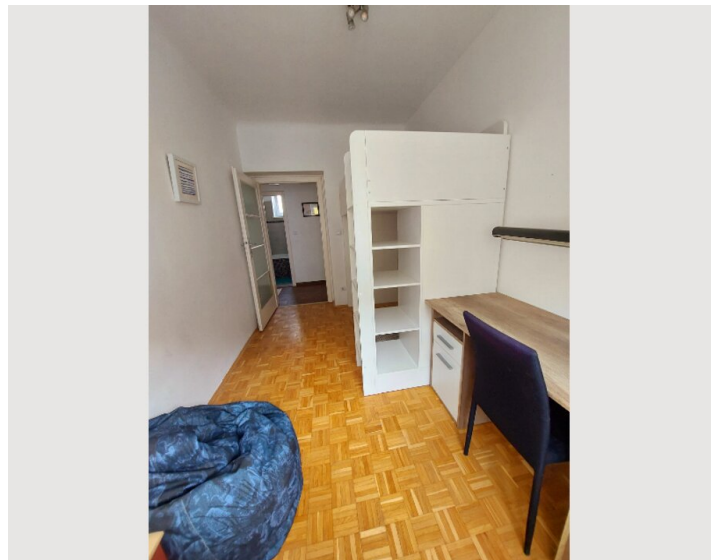
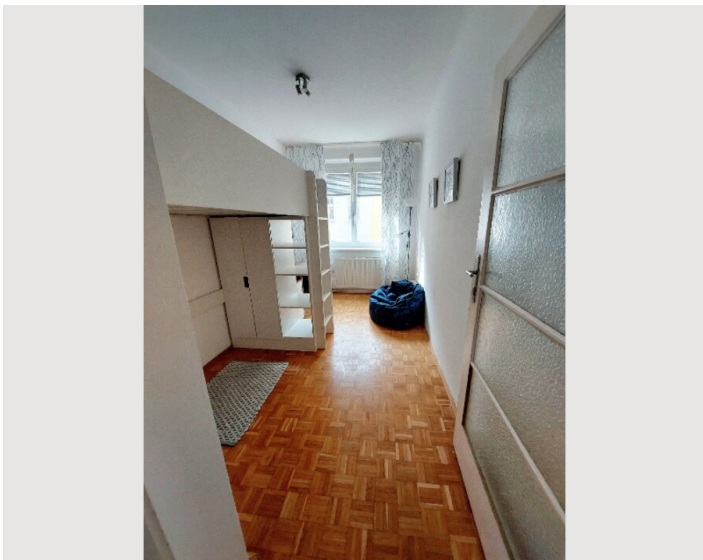
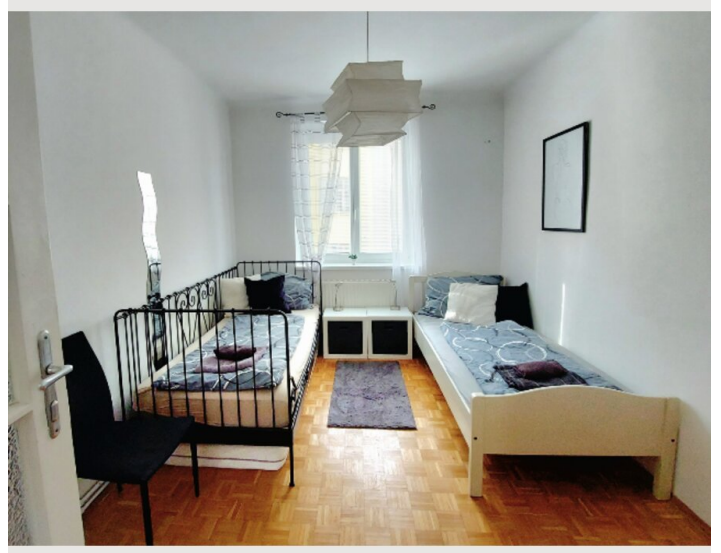
Kitchen

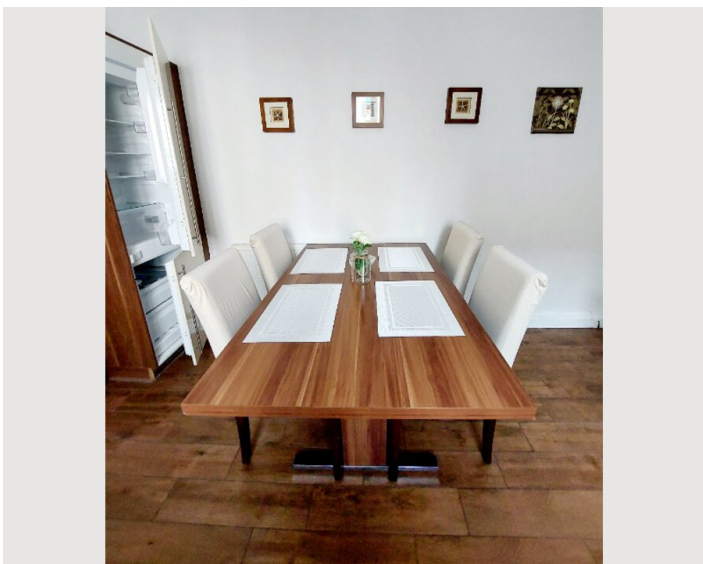
- Private kitchen
- Glasses/Tableware
- Dishwasher
- Cooking utensils
- Coffee machine
- Microwave

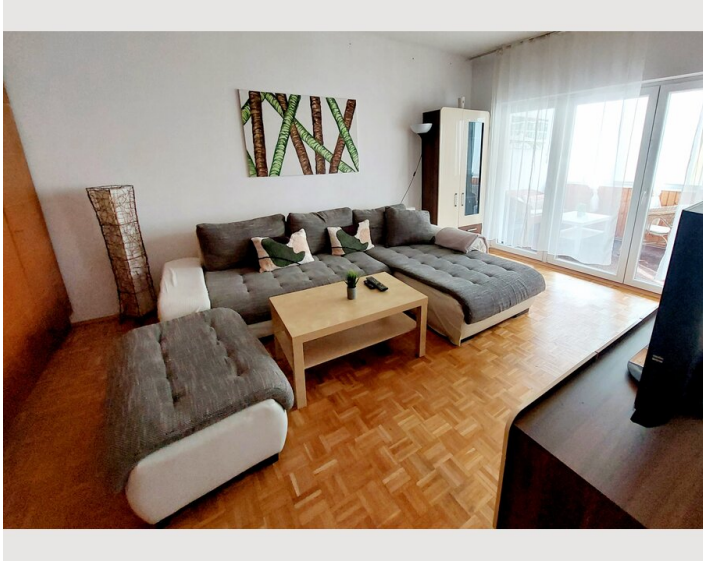
Informations

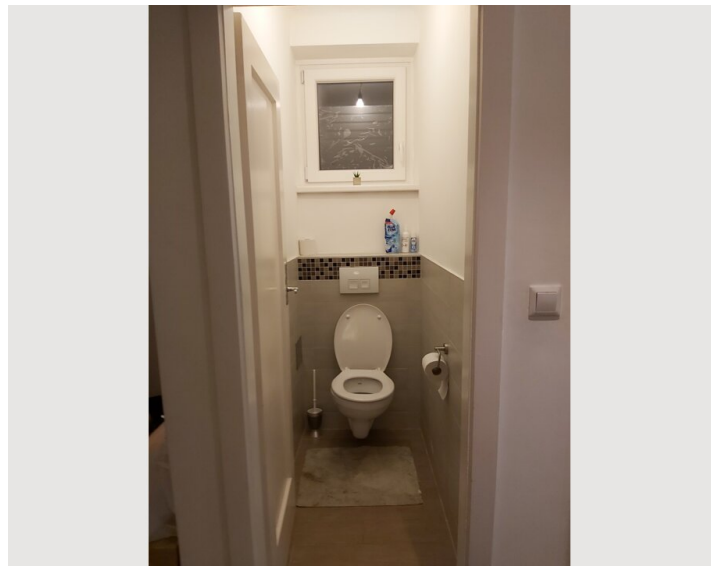
- Suitable for children
- Short-term parking zone subject to a charge
- Private entrance
- Pets allowed
- Bicycle room free of charge
- Smoking not allowed
- Desk/Workplace
- Pets on request
- Regular cleaning at extra cost

Picture gallery



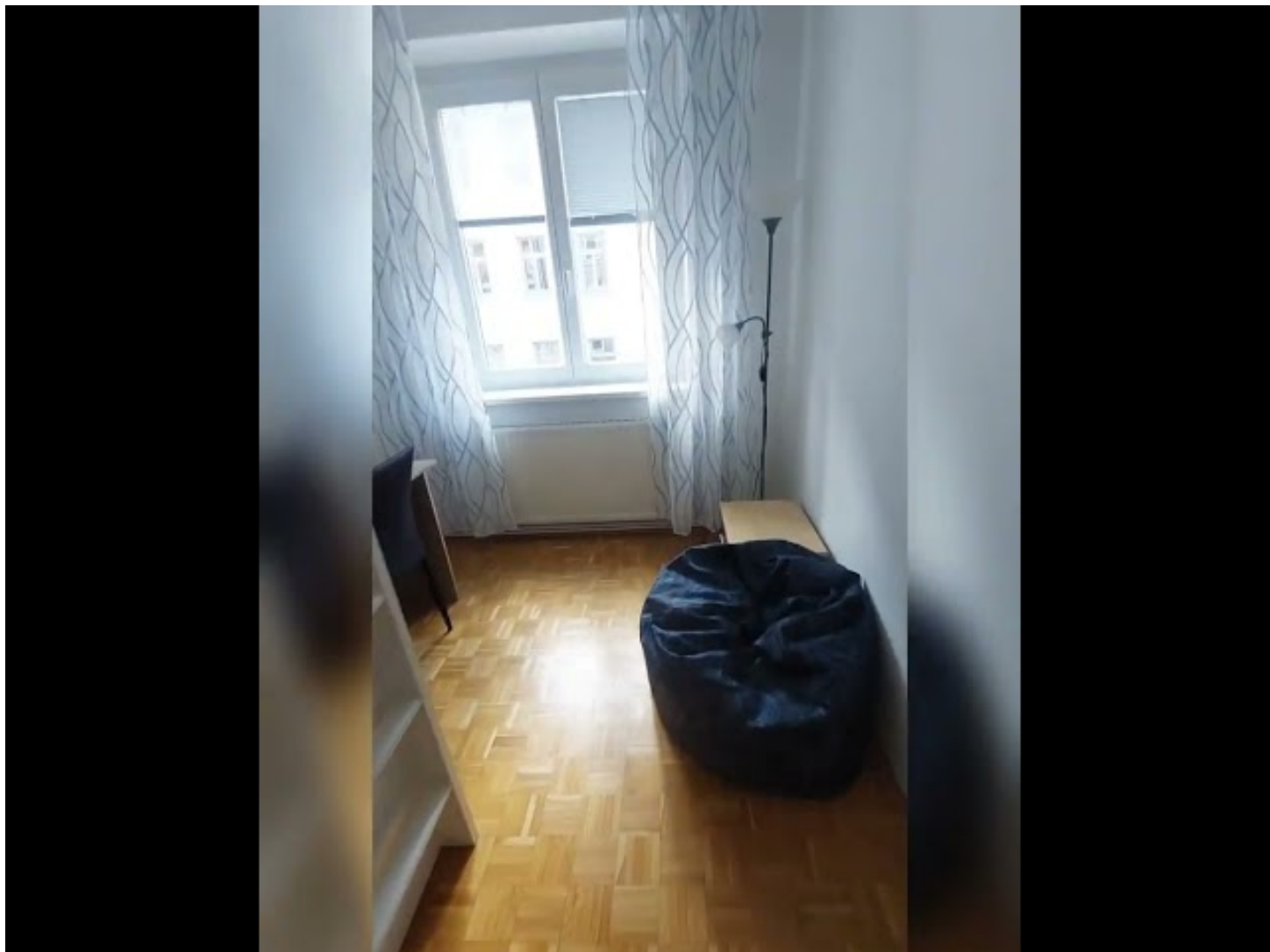







Video

Goto Video



Infrastructure

 Bus, Train

 Supermarkets close by

Central but in a very green and quite area. There is also a park and a childrens playground right around the corner.

Public transport 35 A Bus and train S45 in walking distance.

Pharmacy, Supermarkets, kindergarden, schools also in this area.

Location

