



2 ROOM APARTMENT, 5081 ANIF

## 2 room attic appartement

Object number: CLHH1

[View and rent online](#)

<b>Period</b>	26/06/ - 26/07/2026
<b>Number of persons</b>	2
<b>Total incl. VAT.</b>	€ 2.310,42
<b>Security deposit</b>	€ 1.700,00

newly renovated 2-room attic apartment with balcony, in Anif-Salzburg near the Zoo of Hellbrunn - Salzburg



### Living space

50m<sup>2</sup>



### Maximum occupancy

2 Persons



### Complete accommodation <sup>?</sup>

1 Private bathroom 1 Separated bedroom



### 2. floor



### Check-in

11:00 - 12:00 Clock



### Check-out

11:00 - 12:00 Clock

## Sleeping options

### Sleeping room



1x Double bed (1,40 m x 2 m)

## Description of accommodation

newly renovated 2-room attic apartment with balcony / loggia, very sunny, orientation of the living area with balcony / loggia to the south, sleeping and bathroom to the west, very quiet, small residential building with a few units, location in the attic (2nd floor) , highest quality apartment entrance door with high sound insulation, oak parquet throughout the living area, high-quality tiles in the bathroom, kitchen is a custom-made carpenter, high-quality bathroom furnishings

### Equipment & Features

#### Basic equipment

- Balcony
- Community washing machine
- Bedclothes
- Private parking space
- Cleaning utensils
- Loggia
- Community dryer
- Towels
- Vacuum cleaner
- Hairdryer

#### First supply

- Toilet paper
- Soap

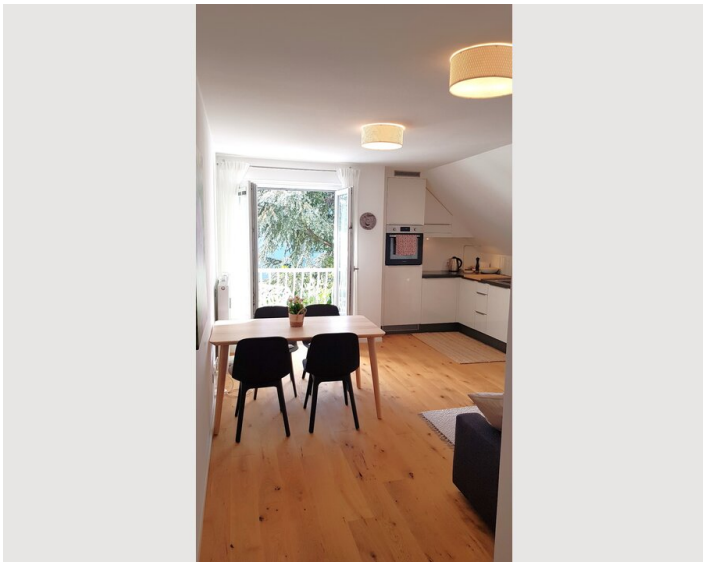
#### Kitchen

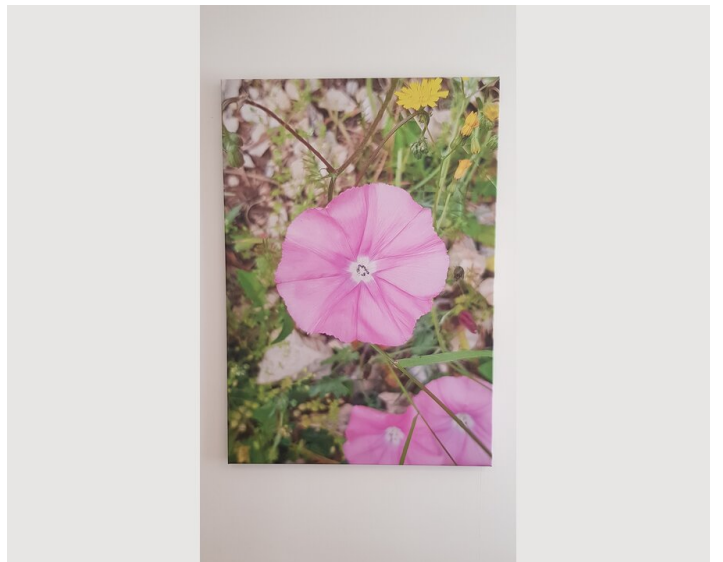
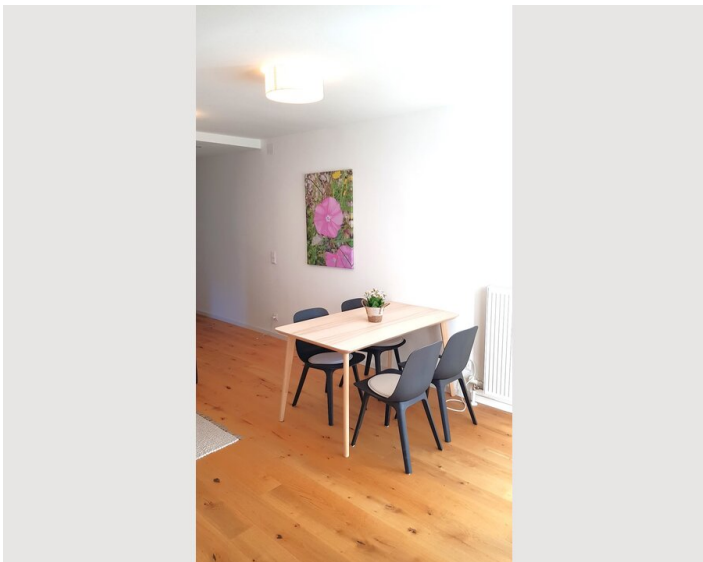
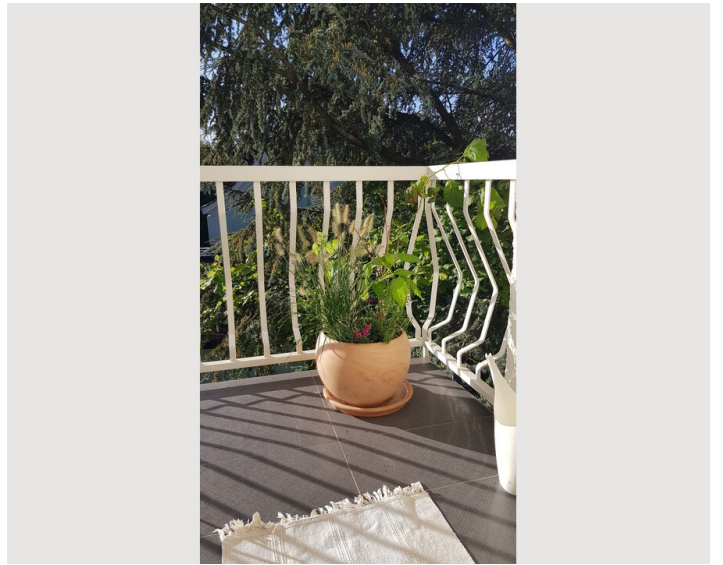
- Private kitchen
- Glasses/Tableware
- Dishwasher
- Cooking utensils
- Coffee machine

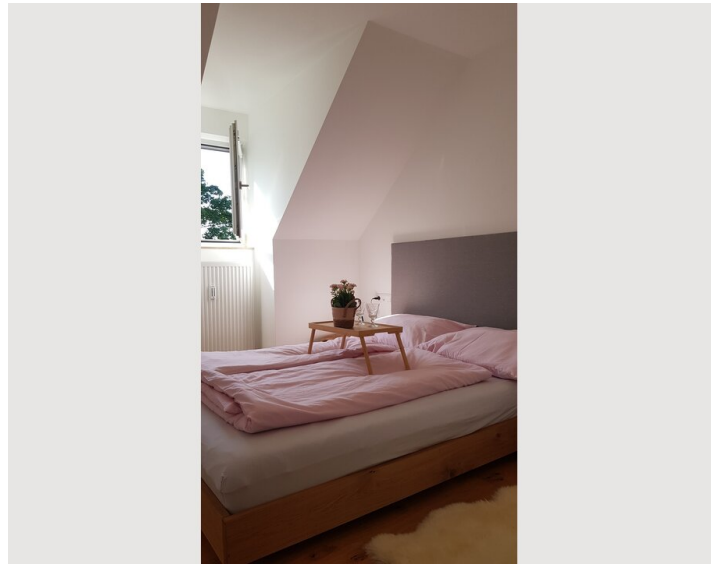
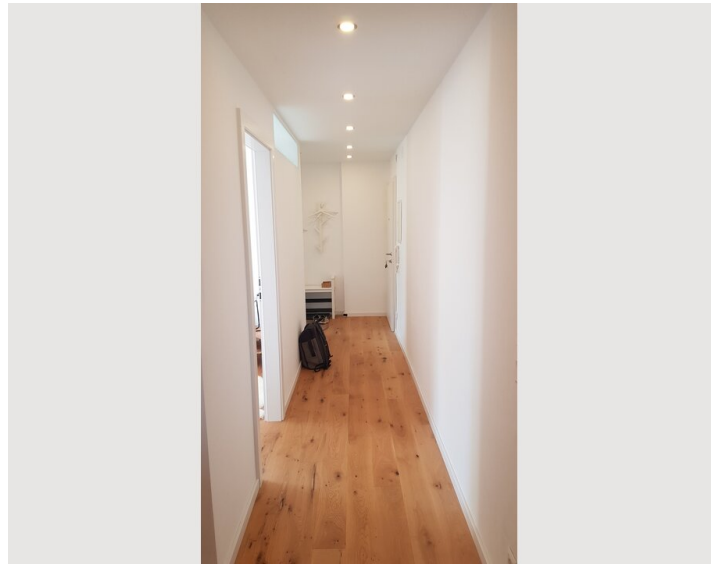
## Informations

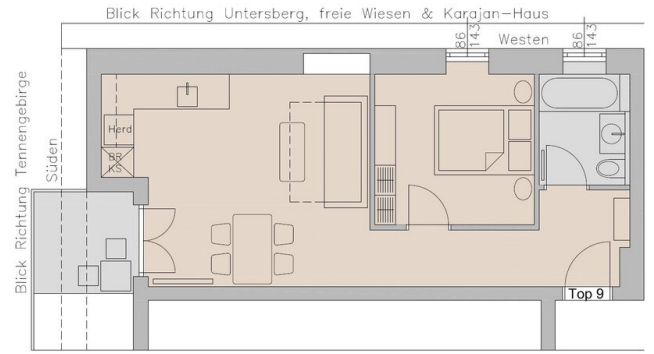
- Smoking not allowed
- Regular cleaning at extra cost
- Pets forbidden

## Picture gallery









### Infrastructure

- -
- 200 m, station "Zoo" Direction to Salzburg City     
  6 km to the center of Salzburg City  
 400 m to the Center of Anif     
  11 km (14 minutes)

Location in the green area around the Hellbrunn Zoo, bus stop just 200 m away; to the center of Anif only about 400 m, to the center of Salzburg only about 6 km, beautiful cycle path from Anif through the Hellbrunner Park and Hellbrunner Allee to the center of Salzburg, the next motorway connection is the Salzburg Süd exit of the A10; Supermarkets in town in Anif: large maxi market, Lidl, Hofer, dm drogerie markt; many well-known restaurants in Anif: Restaurant Friesacher, Friesacher's Einkehr, Friesacher's Heuriger, Schlosswirt zu Anif, etc...; Baker Ebner with a coffee house;

**Location**

