

STUDIO APARTMENT, 1120 VIENNA

## Appartement 1120 near U6, U4, Schnellbahn

Object number: SARZ1

[View and rent online](#)

<b>Period</b>	14/12/2025 - 14/01/2026
<b>Number of persons</b>	2
<b>Total incl. VAT.</b>	€ 1.394,00
Security deposit	€ 1.000,00

Practical apartment in the 12th district (Meidling), near Schönbrunn, 550 meters walk to the U-Bahn U4 / U6, S-Bahn or the airport shuttle (bus), 240 meters to the tram 62; 3 stops on the U4 in the city center.



### Living space

35m<sup>2</sup>



### Maximum occupancy

2 Persons



### Complete accommodation <sup>?</sup>

1 Private bathroom 1 Living-Sleepingroom



### 1. floor



### Check-in

08:00 - 18:00 Clock



### Check-out

12:00 - 19:00 Clock

## Sleeping options

### Living and sleeping



2x Double bed (1,80 m x 2 m)



1x Sofa bed (1 person)

## Descripton of accommodation

Quiet location yet right in Vienna.

Location:

550 meters walk to the U-Bahn U4 / U6, S-Bahn or the airport shuttle (bus), 240 meters to the tram 62; 3 stops on the U4 in the city center.

Schönbrunn Palace, the oldest zoo in the world, the Schoenbrunn swimming pool and the Schönbrunn park, a jogging paradise is within walking distance in a quarter of an hour.

In apartment nearby are supermarkets, a farmers' market with fresh fruit and vegetables, fish, meat and bakery (Meidling market) as well as a shopping street with pedestrian zone (Meidling Hauptstrasse).

Apartment:

The modern 2-room apartment 40 m<sup>2</sup> and comprises on the 1st floor. The apartment in the old building has correspondingly high ceilings.

In the living room with parquet floor there is a comfortable high-bed that you simply reached via stairs / steps, underneath a separate walk-in wardrobe with sliding shelf. The room is also equipped with an (extendable) sofa, 2 armchairs, dining table with 4 chairs, desk with Monitor and high speed Internet.

More stands for sports and those who want to be there, a multipurpose fitness machine available.

The entrance door has a electrical lock a key is not necessary.

The multi-functional wet cell encloses bathroom / toilet / kitchen and is equipped with washing machine, etc. ...

In high-bed can sleep two people. Alternatively, an pull-out sofa for 1 people to use.

## Equipment & Features



### Basic equipment

- Internet/Wifi
- Bedclothes
- Aircondition
- Iron & ironing board
- Hairdryer
- Private washing machine
- Towels
- Vacuum cleaner
- Cleaning utensils



### First supply

- Toilet paper
- Soap
- shampoo



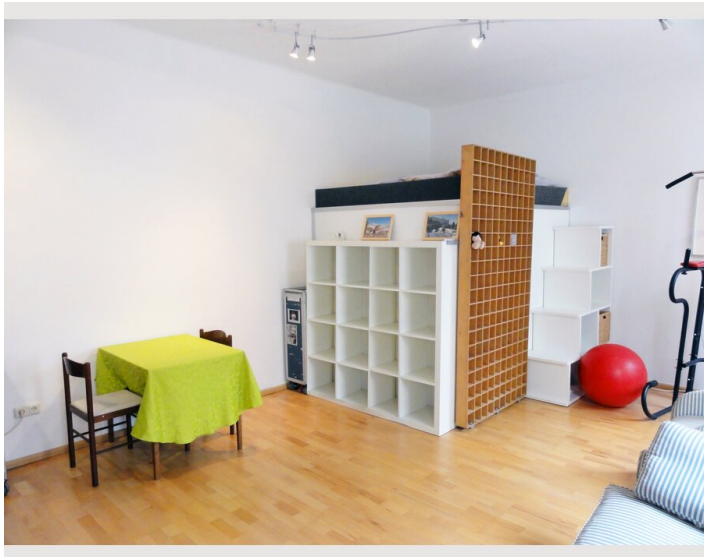
### Kitchen

- Kitchenette
- Glasses/Tableware
- Cooking utensils
- Microwave

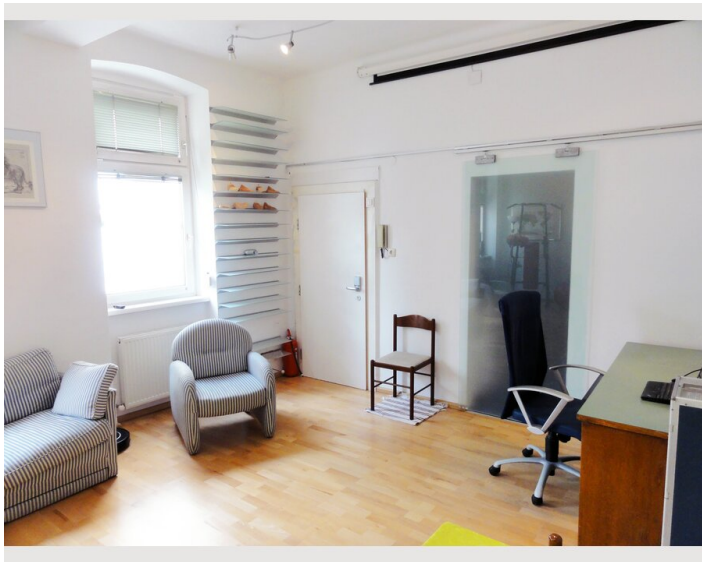
## Informations

- Not suitable for children
- Short-term parking zone subject to a charge
- Pets forbidden
- Smoking not allowed
- Desk/Workplace
- Regular cleaning at extra cost

## Picture gallery








### Infrastructure

 Meidling

 U4 Niederhofstasse oder Längenfeldgasse



550 meters walk to the U-Bahn U4 / U6, S-Bahn or the airport shuttle (bus), 240 meters to the tram 62; 3 stops on the U4 in the city center.

Location

