



STUDIO APARTMENT, 1070 VIENNA

## Top City-Center Studio

Object number: GGCO1

[View and rent online](#)

<b>Period</b>	12/07/ - 12/08/2025
<b>Number of persons</b>	2
<b>Total incl. VAT.</b>	€ 1.458,07
<b>Security deposit</b>	€ 1.200,00

The studio apartment is about 25 sqm in size, can accommodate one or two persons and is located in a top location of Vienna.



### Living space

25m<sup>2</sup>



### Maximum occupancy

2 Persons



### Complete accommodation <sup>?</sup>

1 private bathroom 1 Living-Sleepingroom



### Ground floor

Elevator available



### Check-in

00:00 - 23:59 Clock



### Check-out

00:00 - 23:59 Clock

## Sleeping options

### Living and sleeping



1x Double bed (1,80 m x 2 m)

## **Descripton of accommodation**

The studio apartment is about 25 sqm in size, can accommodate one or two persons and is located in a top location of Vienna. The area is called "Spittelberg" and is one of the most wanted areas to live in Vienna. All sights, a variety of restaurants, bars, discos, as well as theater and opera can be easily reached on foot or by subway.

Due to the legal situation in Vienna, it is only possible to rent the apartment for a period between 31 days and a maximum of 6 months.

Please note the following:

The apartment is located on the ground floor (street level, not in the basement) and has only limited daylight. The apartment is not facing the street side and therefore very quiet. However, the windows are aligned only in the direction of the staircase and in a small atrium.

The apartment is very well equipped and functional:

The living area offers:

- ) Flat screen TV (cable TV)
- ) dining area
- ) 1 double bed 180x200 cm and a pull-out couch
- ) Music system
- ) etc.

The bathroom is equipped with:

- ) washing machine
- ) shower cabin
- ) floor heating
- ) toilet
- ) hair dryer
- ) soap dispenser
- ) etc.

In the kitchen you will find:

- ) dishwasher
- ) fridge with freezer
- ) water heater
- ) coffee machine
- ) microwave
- ) toaster
- ) crockery, cutlery and cooking utensils
- ) etc.

## Equipment & Features



### Basic equipment

- Internet/Wifi
- TV
- Bedclothes
- Private toilet
- Iron & ironing board
- Music system/docking station
- Private washing machine
- Towels
- Vacuum cleaner
- Hairdryer



### First supply

- Toilet paper
- Soap



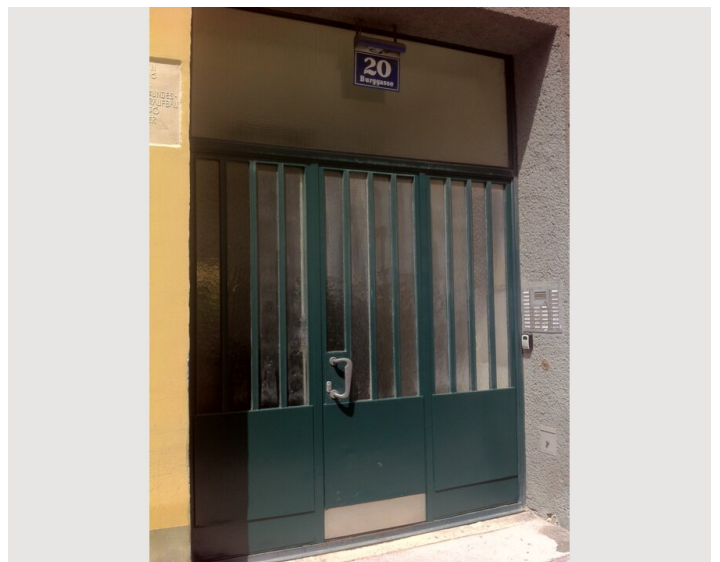
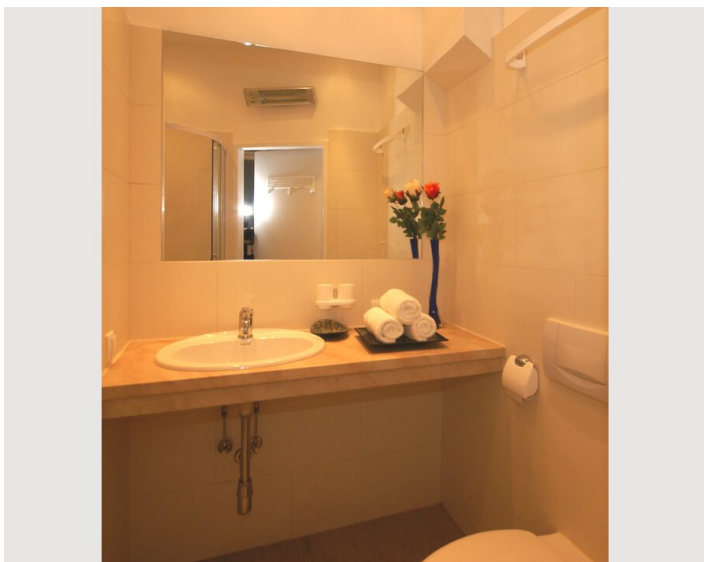
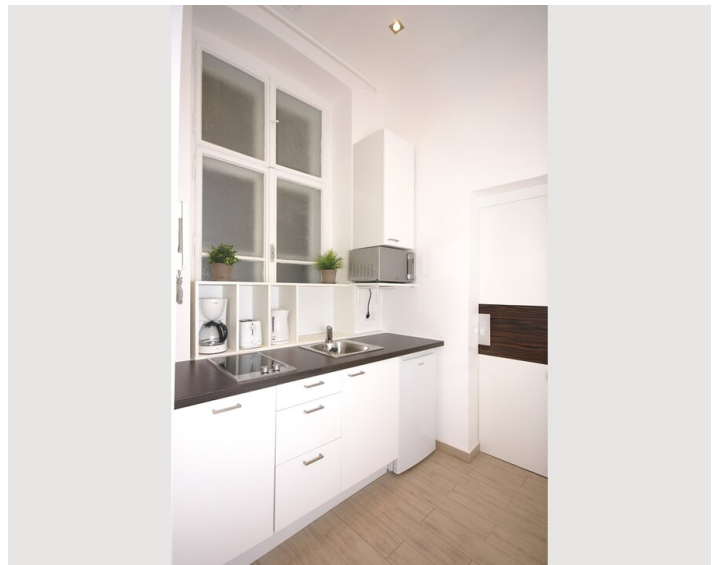
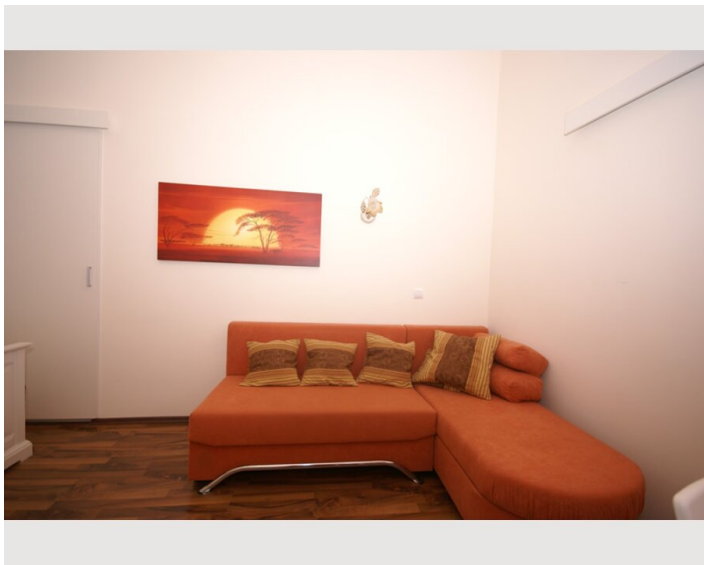
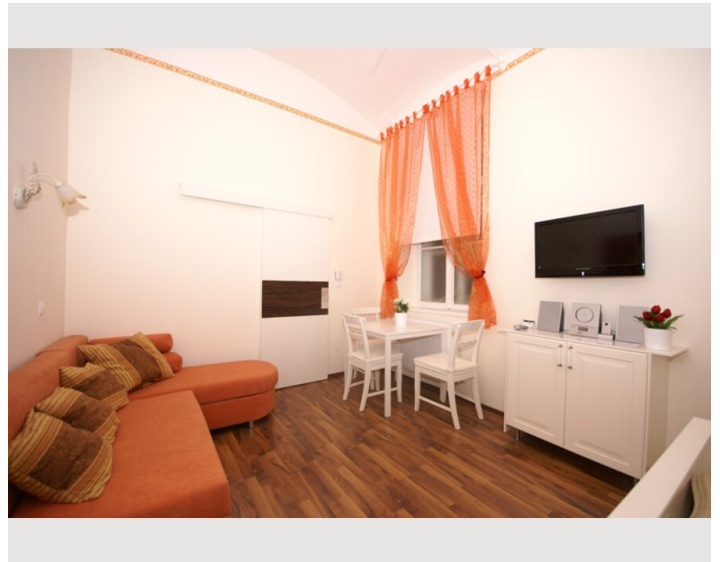
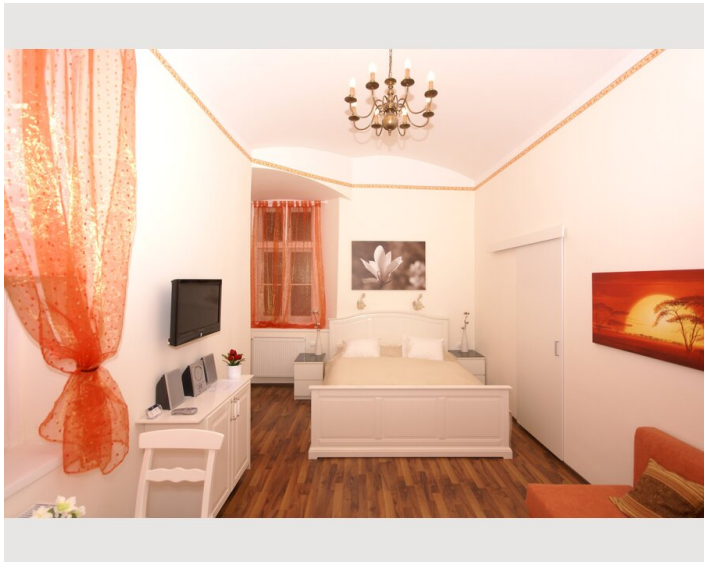
### Kitchen

- Private kitchen
- Glasses/Tableware
- Dishwasher
- Cooking utensils
- Filter coffee
- Microwave

## Informations

- Suitable for construction workers
- Short-term parking zone subject to a charge
- Smoking not allowed
- Pets forbidden

## Picture gallery





### Location

