



STUDIO APARTMENT, 4040 LINZ

## Stylish apartment in central location - Linz Urfahr

Object number: OQRV1

[View and rent online](#)

Welcome to your new home in Linz!

|                          |                     |
|--------------------------|---------------------|
| <b>Period</b>            | 16/04/ - 16/05/2026 |
| <b>Number of persons</b> | 2                   |
| <b>Total incl. VAT.</b>  | € 1.880,20          |
| <b>Security deposit</b>  | € 1.400,00          |



### Living space

56m<sup>2</sup>



### Maximum occupancy

2 Persons



### Complete accommodation <sup>?</sup>

1 Private bathroom 1 Living-Sleepingroom



### 4. floor

Elevator available



### Check-in

16:00 - 20:00 Clock



### Check-out

09:00 - 11:00 Clock

## Sleeping options

### Living & Sleeping



1x Double bed (1,80 m x 2 m)

## Descripton of accommodation

A stylishly furnished apartment awaits you in a unique location in Urfahr. High, bright rooms invite you to linger.

## Equipment & Features



### Basic equipment

- Garden sharing
- TV
- Bedclothes
- Private toilet
- Aircondition
- Iron & ironing board
- Hairdryer
- Internet/Wifi
- Private washing machine
- Towels
- Garage
- Vacuum cleaner
- Cleaning utensils



### First supply

- Toilet paper
- Soap
- Fridge filling on request
- shampoo
- Nespresso capsules



### Kitchen

- Private kitchen
- Glasses/Tableware
- Dishwasher
- Cooking utensils
- Espresso machine

## Informations

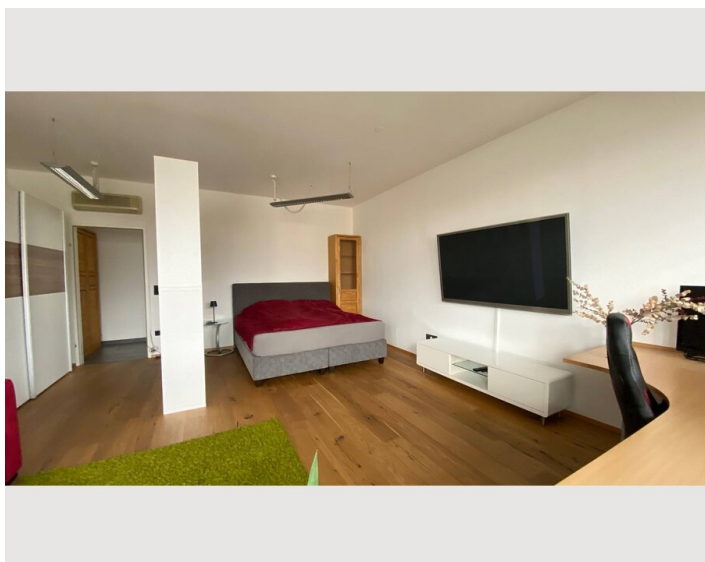
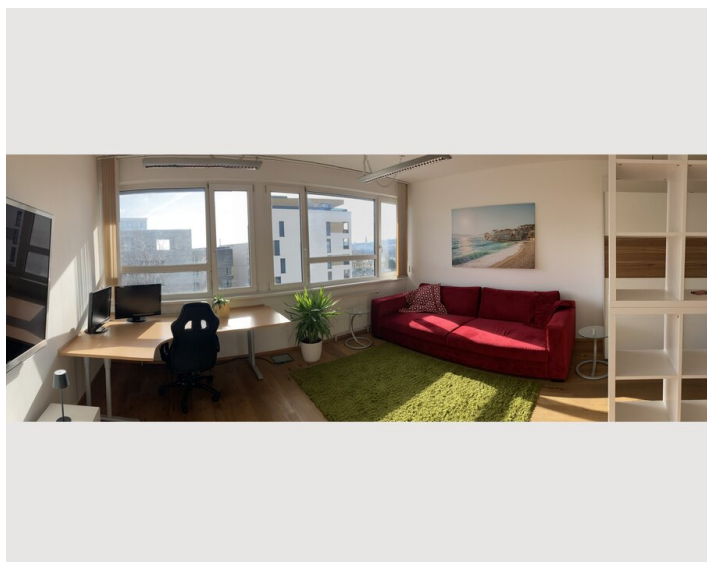
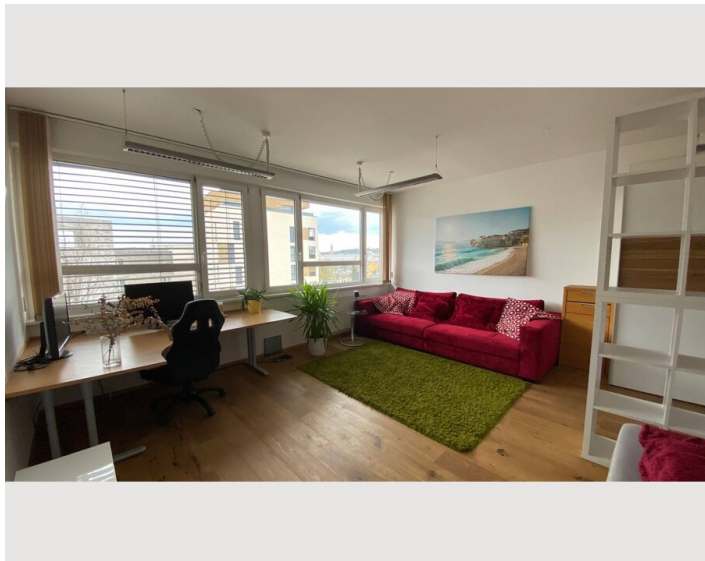
- Suitable for children
- Free short-term parking zone
- Private entrance
- Regular cleaning at extra cost
- Smoking not allowed
- Desk/Workplace
- Pets forbidden
- Bicycle room free of charge

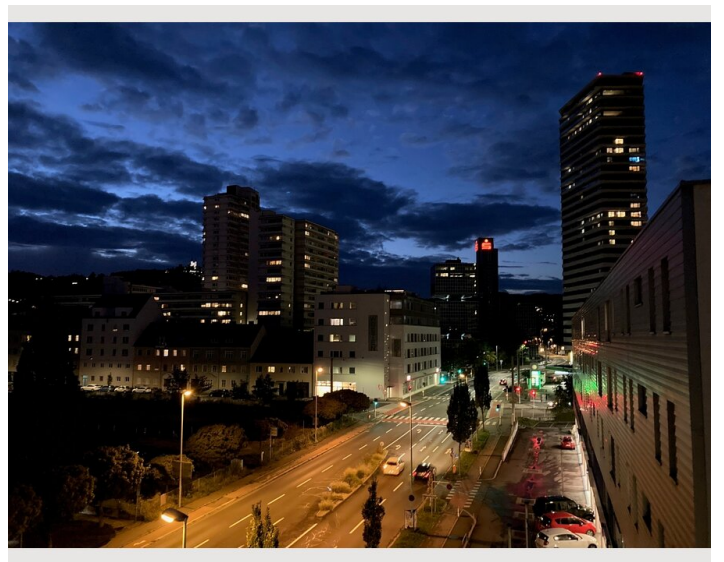
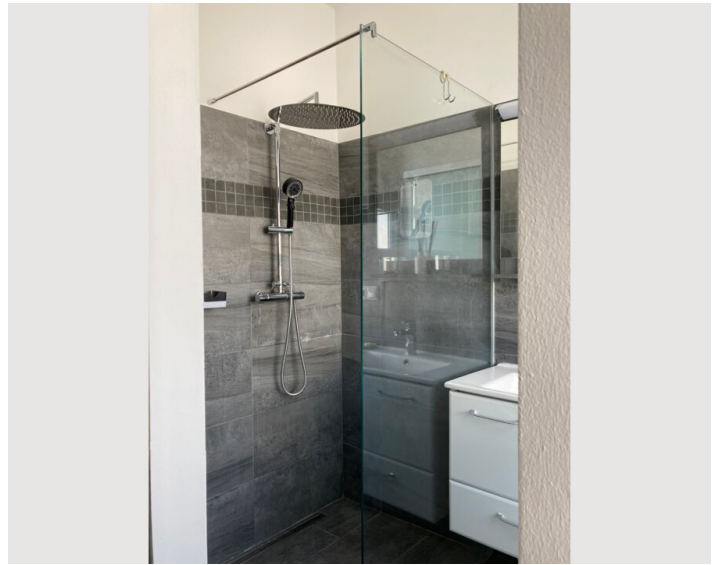
## Additional services

- Underground parking space (women's parking space) (€ 220,00)
- DEPOSIT Hand-held transmitter Underground parking space (€ 100,00)


All prices are gross per month - billing is done directly with the lessor.


## Picture gallery








## Infrastructure

 Tram stop right outside the front door

 on foot in 2 minutes (150 m)

 by tram in about 10 minutes

 approx. 13.5 km, by car approx. 21 minutes

 2 tram stops or on foot in about 12 minutes

---

On foot:

in about 2 minutes on the Danube

in about 10 minutes at the main square

in approx. 6 minutes Lentia City (Shopping Mall)

in about 12 minutes to Ars Electronica

Restaurants in the immediate vicinity

Johannes Kepler University Linz – JKU approx. 14 minutes by tram, 4.3 km or by car approx. 10 minutes

## Location

