



3 ROOM APARTMENT, 1030 VIENNA








90sqm centrally located with great view

Object number: GASF2

[View and rent online](#)

Period	20/12/2025 - 20/01/2026
Number of persons	2
Total incl. VAT.	€ 3.437,56
Security deposit	€ 2.600,00

2016 furnished 90m2 fully furnished apartment in a very nice Wilhelminian style building (1888), very close to the Hilton Hotel, the city park, the Landstraße, the express train and the subway. Approx. 15 min. walk to St. Stephen's Cathedral.

 Living space 90m²	 5. floor Elevator available
 Maximum occupancy 4 Persons	 Check-in 15:00 - 23:00 Clock
 Complete accommodation  1 Private bathroom 2 Separated bedrooms	 Check-out 05:00 - 13:00 Clock

Sleeping options

Bedroom 1



1x Double bed (1,80 m x 2 m)

Bedroom 2



1x Double bed (1,40 m x 2 m)

Descripton of accommodation

2016 furnished 90m² fully furnished apartment in a very nice Wilhelminian style building (1888), very close to the Hilton Hotel, the city park, the Landstraße, the express train and the subway. Approx. 15 min. walk to St. Stephen's Cathedral. Living room: table with 5 black or white swivel armchairs, TV, internet and wall unit.

Large bedroom with double bed (1,80mx 2 m), large wardrobe, standing mirror, Estrade with small table and armchairs as well as a desk and view over a part of Vienna.

Small bedroom (bed: 1.40 m wide, 2 m long) with mirrored wardrobe. Kitchen with stove, dishwasher, microwave, coffee machine, washing machine with dryer, table with bar stool.

I always try to be there when guests arrive. I can always be reached by phone if there are any questions or problems. Guests can also enter the apartment without contact, as there is a key safe.

The apartment is on the top floor with an elevator. The elevator always stops on the mezzanine floor. There are about 12 steps from the elevator to the apartment. But a very nice view over the city.

Traffic-calmed street near the music university. Shopping center and shopping street just a few minutes away. Many restaurants, stores, cafés etc.

Equipment & Features



Basic equipment

- Internet/Wifi
- Private washing machine
- Bedclothes
- Private toilet
- Vacuum cleaner
- Cleaning utensils
- TV
- Private dryer
- Towels
- Aircondition
- Iron & ironing board
- Hairdryer



First supply

- Toilet paper
- Soap
- Fridge filling on request
- shampoo
- Nespresso capsules



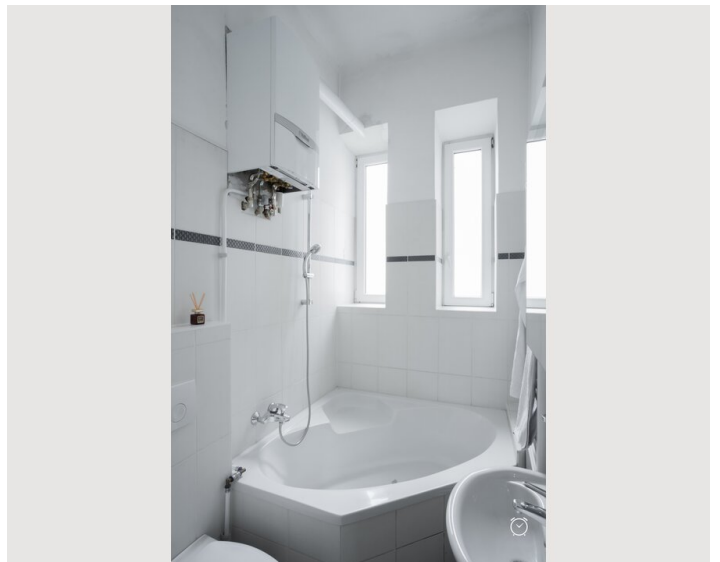
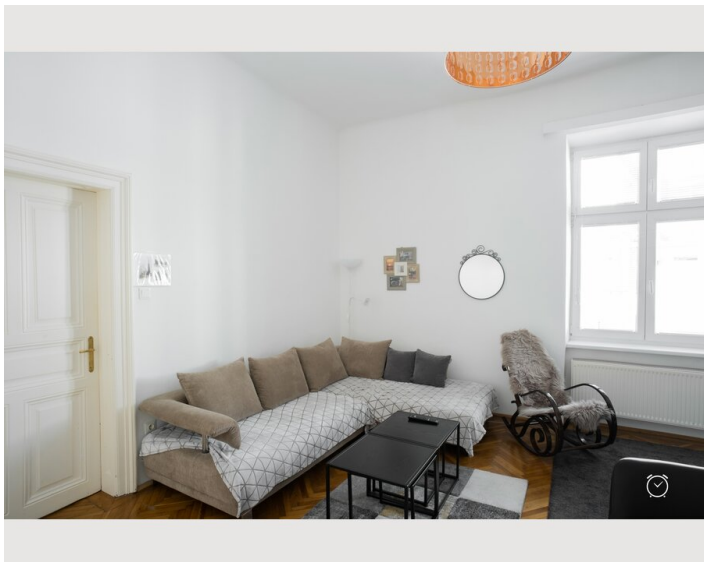
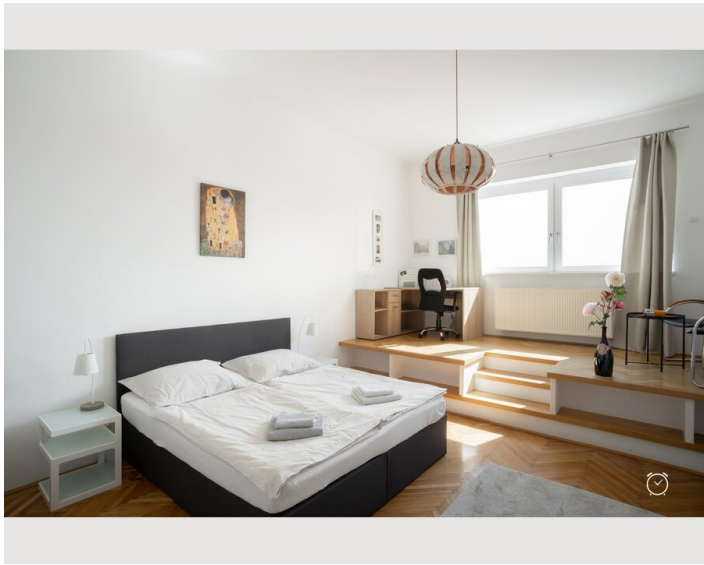
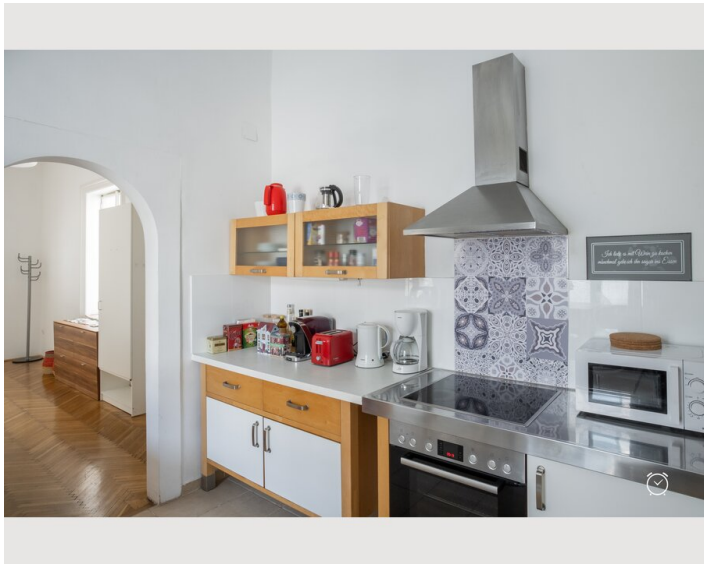
Kitchen

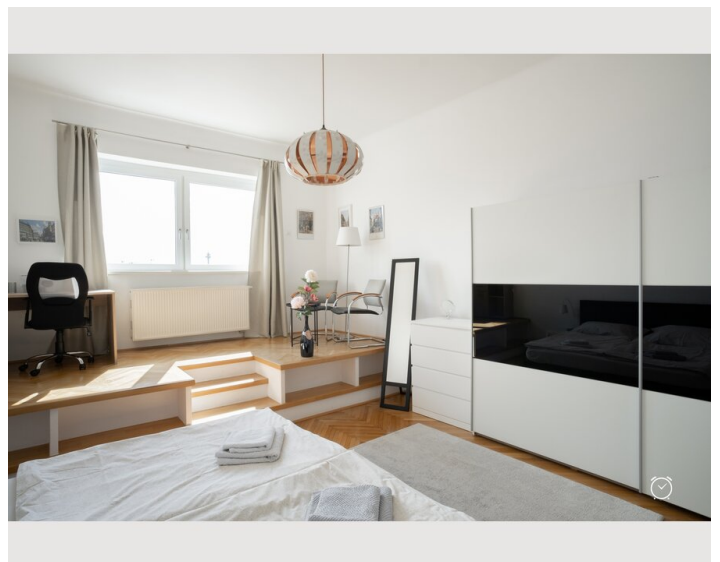
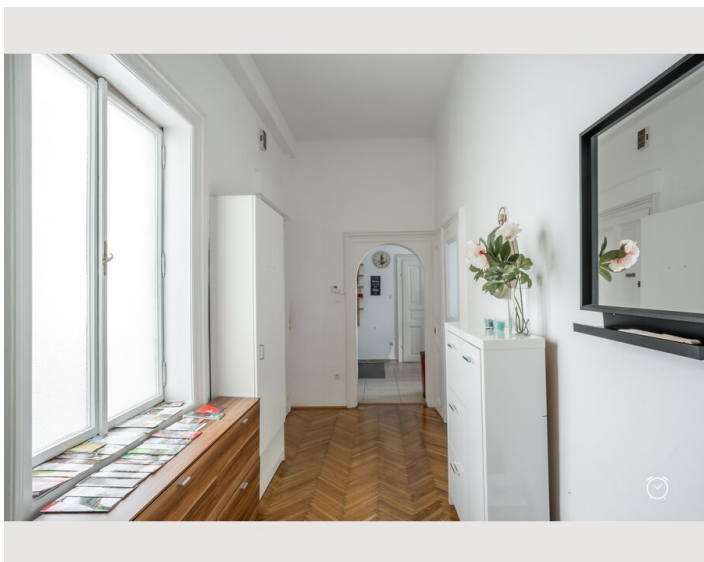
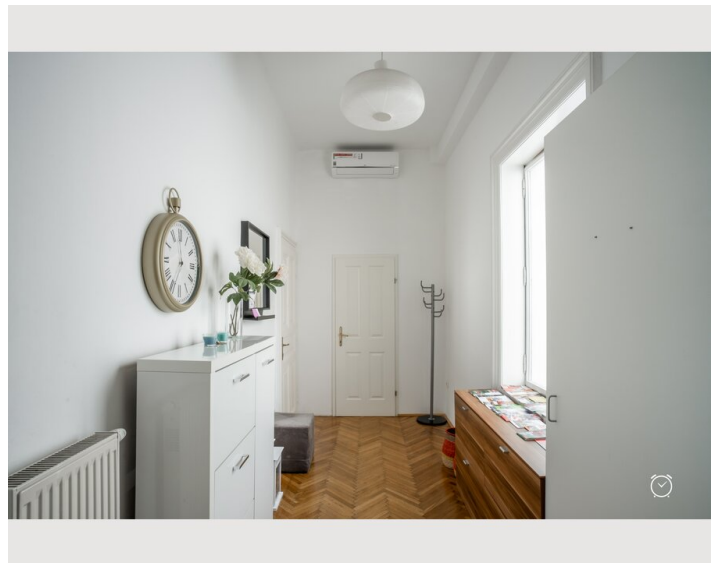
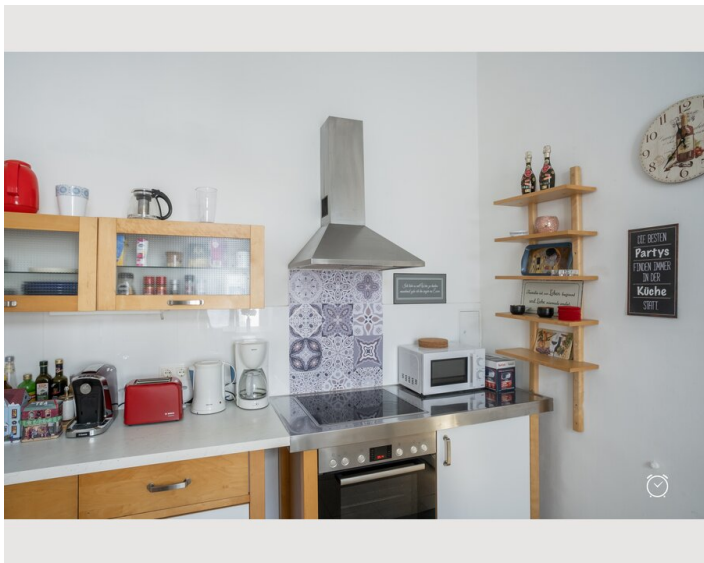
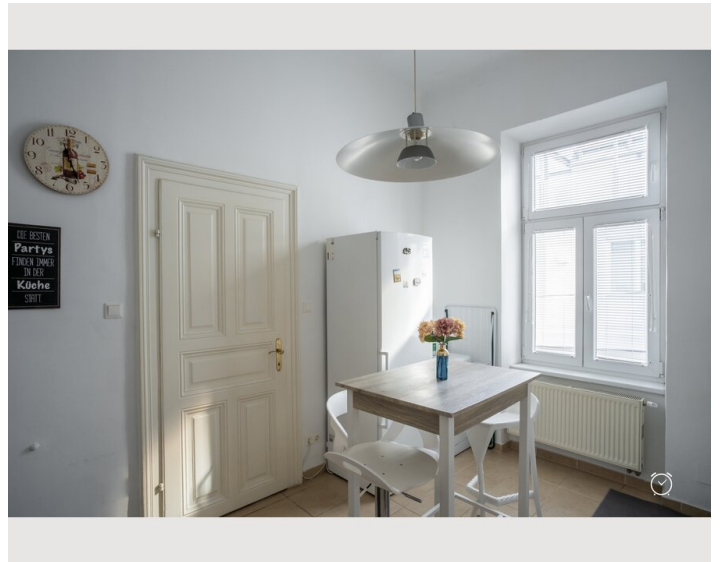
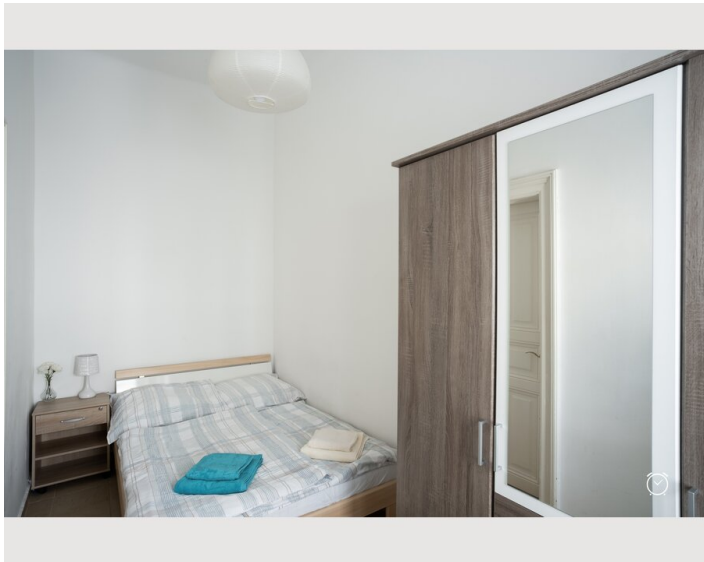
- Private kitchen
- Glasses/Tableware
- Filter coffee
- Microwave
- Cooking utensils
- Espresso machine
- Dishwasher

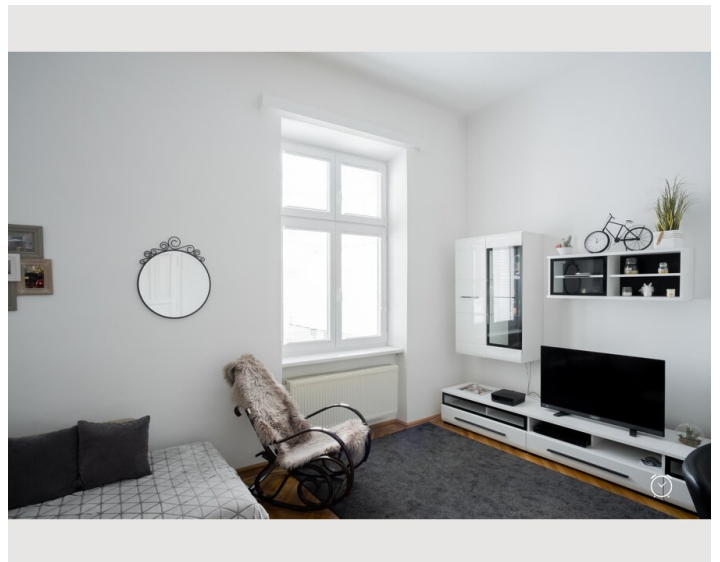
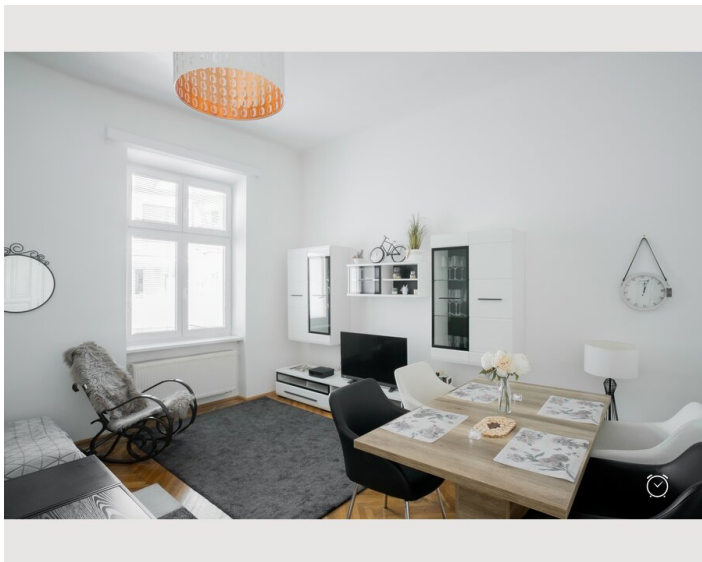
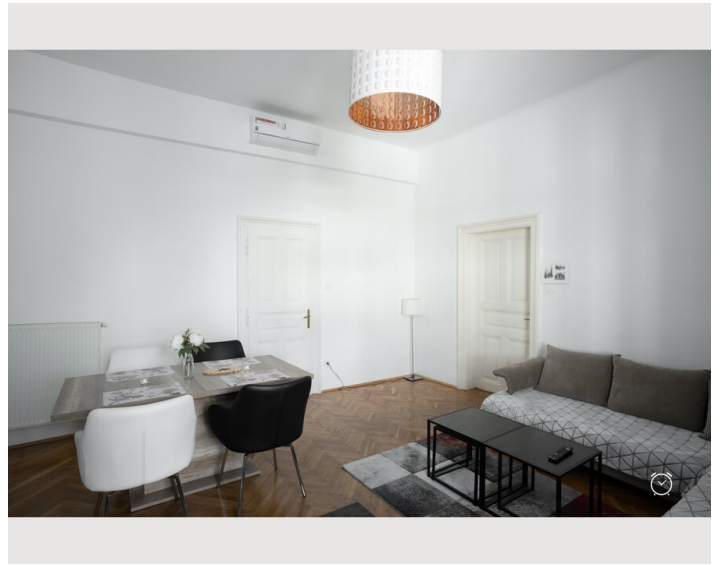
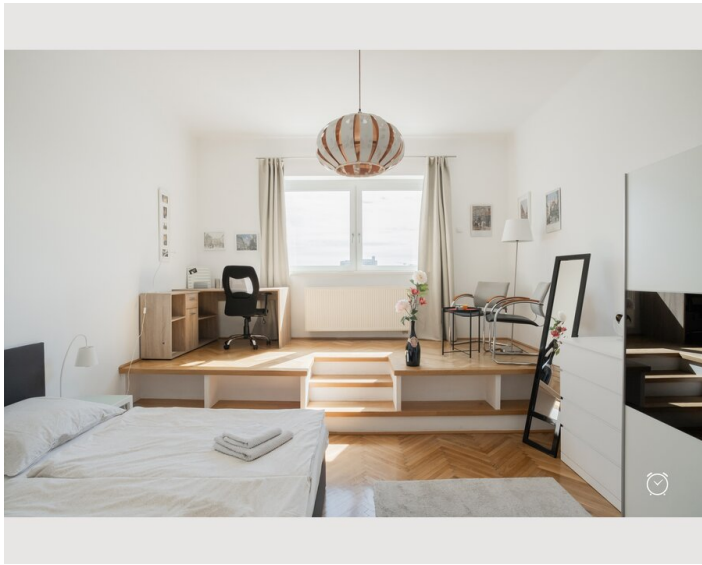
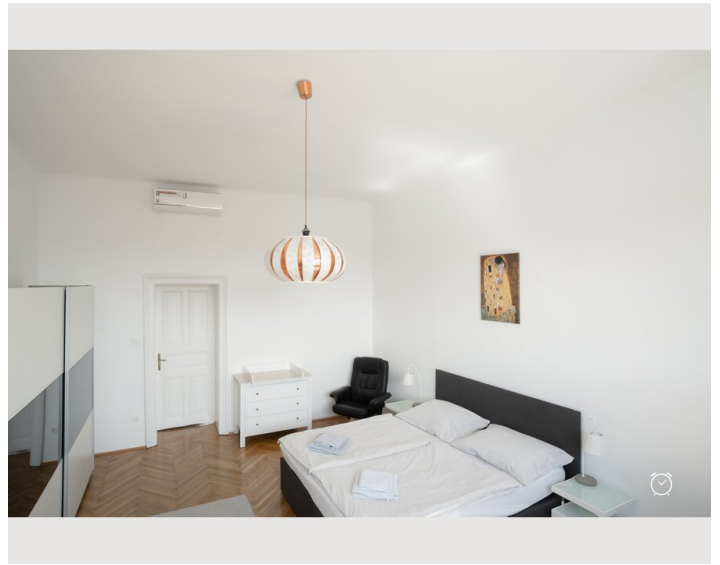
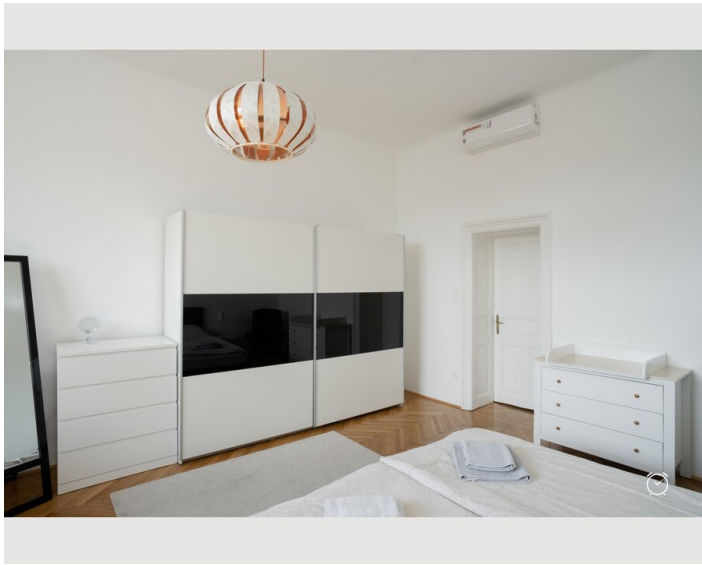
Informations

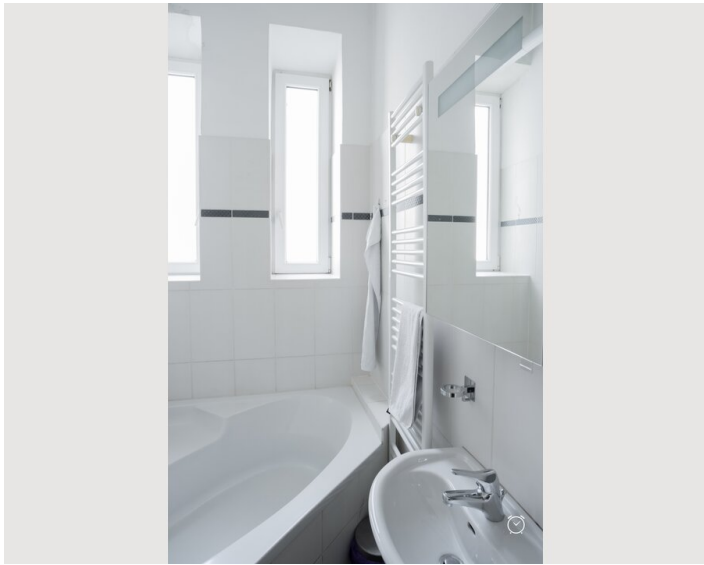
- Suitable for construction workers
- Smoking not allowed
- Desk/Workplace
- Pets forbidden
- Bicycle room at extra cost
- Suitable for children
- Short-term parking zone subject to a charge
- Private entrance
- Regular cleaning at extra cost

Picture gallery











Video


[Goto Video](#)





Infrastructure

 20min by train

 10min by foot

 2min by foot

 5min by foot

 2min by foot

We are very easy to reach from the airport and the main railway station by rapid transit. Get off at Wien Mitte. If you use the rear exit - direction Stadtpark - you will come out on the Ungarbrücke. From there, keep right and walk right again up Linke Bahngasse to Beatrixgasse (2-3 minutes). U3 and U4 are also very close by

