



STUDIO APARTMENT, 1160 VIENNA

Wichtelgasse

Object number: VYYW11

[View and rent online](#)

Holiday apartment with excellent value for money

Period	22/06/ - 22/07/2026
Number of persons	2
Total incl. VAT.	€ 2.333,88
Security deposit	€ 1.800,00



Living space

29m²



Maximum occupancy

2 Persons



Complete accommodation [?]

1 Private bathroom 1 Living-Sleepingroom



2. floor

Elevator available



Check-in

14:00 - 23:59 Clock



Check-out

00:00 - 10:00 Clock

Sleeping options

Living & Sleeping



1x Double bed (1,80 m x 2 m)

Descripton of accommodation

This holiday home is distinguished by its excellent value for money. The compact-equipped apartment has everything you need for an unforgettable holiday in Vienna.

A double bed, a spacious kitchen, a dining table and, above all, an affordable price speak for this holiday apartment. Use our free wireless Internet. There is also a TV available for your entertainment.

The apartment also has a hairdryer, a vacuum cleaner, an iron and a clothes dryer. The bathroom has a shower.

The fully-equipped kitchen provides everything you need whether you want to prepare a small snack or a full meal.

The excellent transport connections tram take you to the place of interest "Town Hall" within 12 minutes.

A fully equipped apartment with good access to public transport for guests who want to explore historic Vienna.

We look forward to welcoming you in Vienna and in your apartment.

Equipment & Features



Basic equipment

- Internet/Wifi
- Private washing machine
- Towels
- Vacuum cleaner
- Hairdryer
- TV
- Bedclothes
- Private toilet
- Iron & ironing board



First supply

- Toilet paper
- Soap



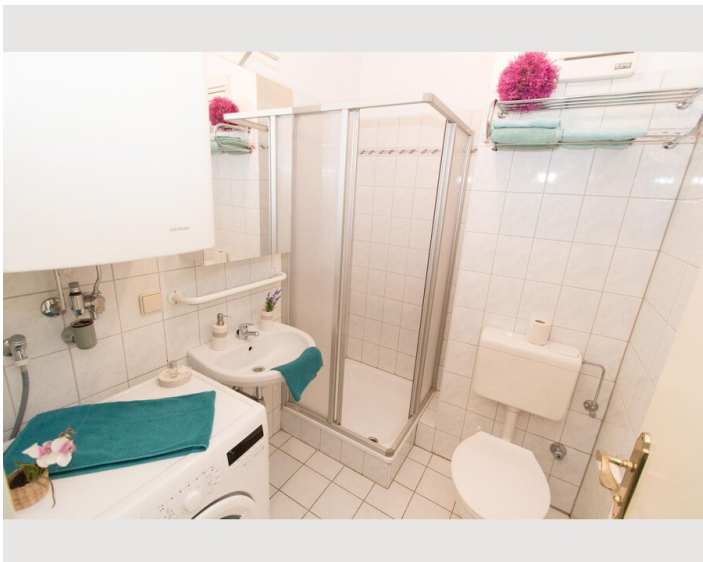
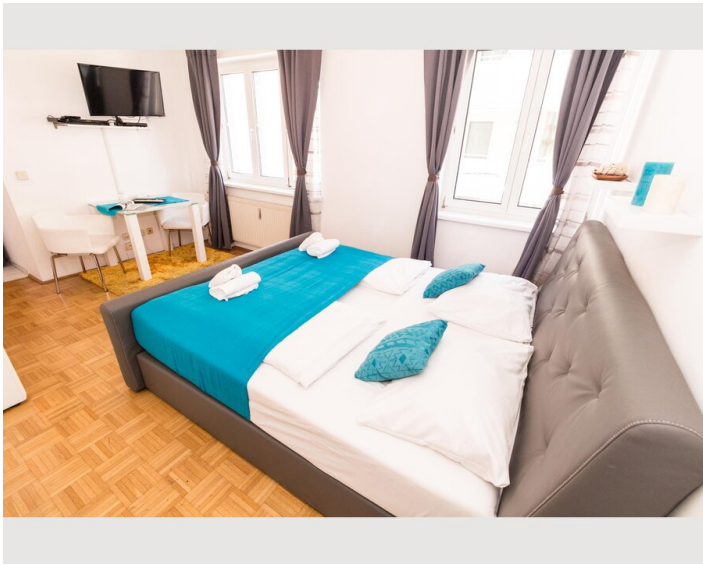
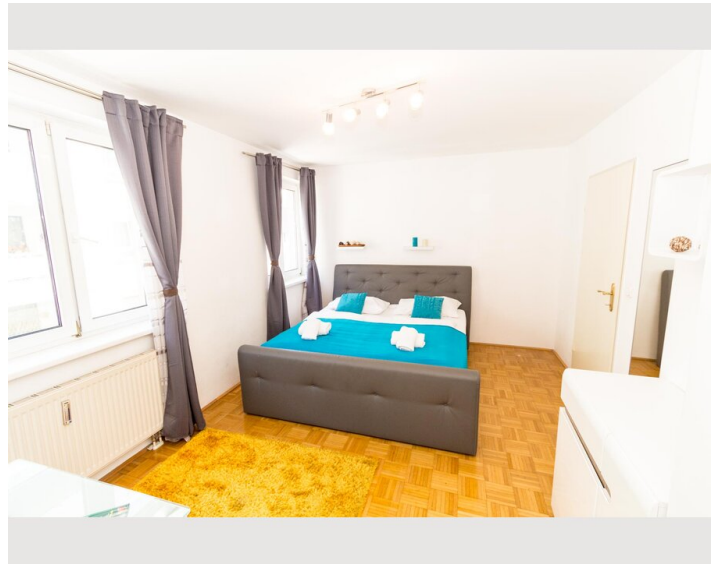
Kitchen

- Kitchenette
- Glasses/Tableware
- Microwave
- Cooking utensils
- Filter coffee


Informations

- Smoking not allowed
- Pets forbidden
- Short-term parking zone subject to a charge
- Regular cleaning at extra cost

Picture gallery



Infrastructure

 S-Bahn/Subway - 10 minutes

Bus and tram stop, supermarket, cafes and restaurants in the immediate vicinity, Subway and S-Bahn station within 15 minutes

Location

