



2 ZIMMER WOHNUNG, 4020 LINZ

## Linz near Hessenpark New

Object number: GJPU1

[View and rent online](#)

<b>Period</b>	03/10/ - 03/11/2025
<b>Number of persons</b>	2
<b>Total</b> incl. VAT.	€ 1.362,89
Security deposit	€ 1.000,00

Very cozy new apartment facilities 2 room apartment with 28 m² Very sunny and bright with large windows facing south-west.



### Living space

28m²



### Maximum occupancy

3 Persons



### Complete accommodation

1 Private bathroom 1 Separated bedroom 1 Living-Sleepingroom



### 2. floor

Elevator available



### Check-in

15:00 - 20:00 Clock



### Check-out

08:00 - 10:00 Clock

## Sleeping options

### Sleeping room



1x Double bed (1,60 m x 2 m)

### Living and sleeping



1x Double bed (1,60 m x 2 m)

## Descripton of accommodation

Fully furnished with new furniture (kitchen, bathroom, sliding doors to the bedroom and bathroom) Internet and WiFi, large cellar compartment,

Facilities: Coffee capsule machine, dishwasher, glasses, dishes, cutlery, high-speed internet and WiFi, bedroom bed width 160 cm, hand and bath towels.

External blinds available for complete darkening.

Use of the garden is also possible.

Vicinity:

The Hessenpark and the city center with many shops, restaurants and pharmacies are in the immediate vicinity. Linz main square is only 900m away, nearest bus stop 170m, tram station 250m, main train station 1000m,

The Danube with many sports options such as running, cycling, walking etc. is only 1100m on foot

## Equipment & Features



### Basic equipment

- Garden sharing
- Private washing machine
- Towels
- Cleaning utensils
- Internet/Wifi
- Bedclothes
- Private toilet



### First supply

- Toilet paper
- Soap
- shampoo
- Nespresso capsules



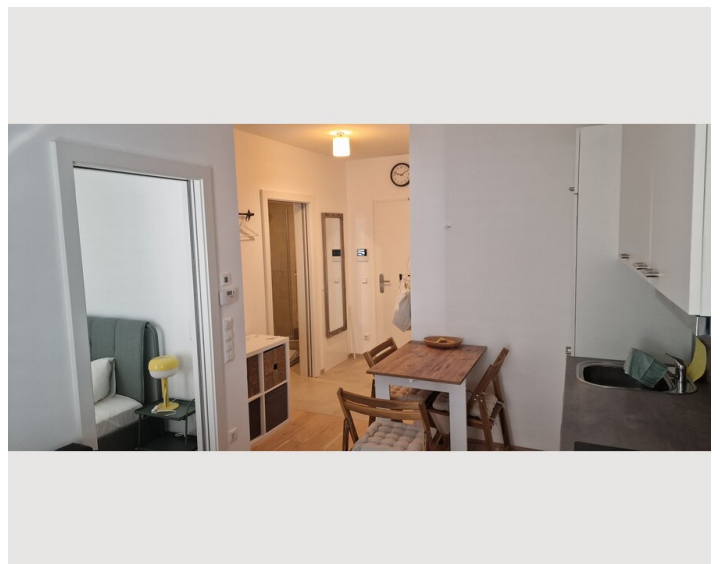
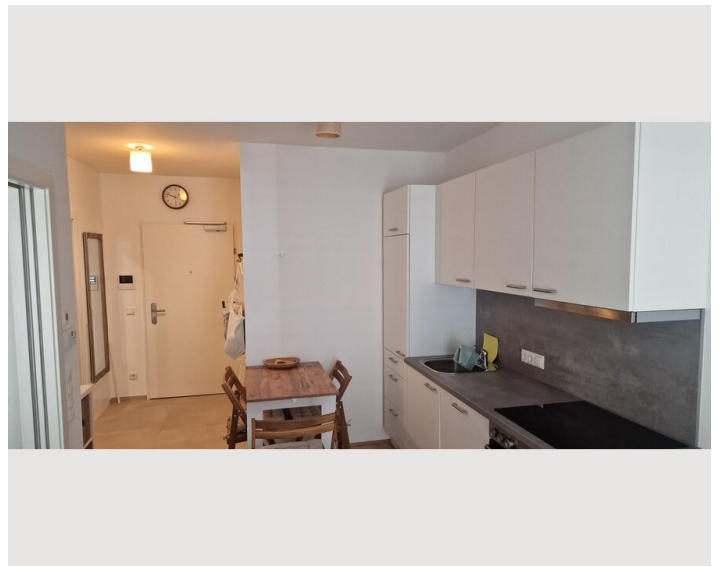
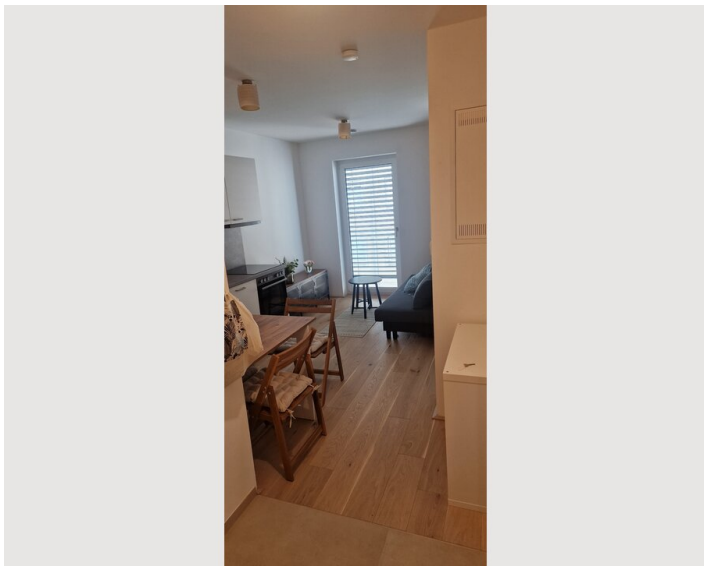
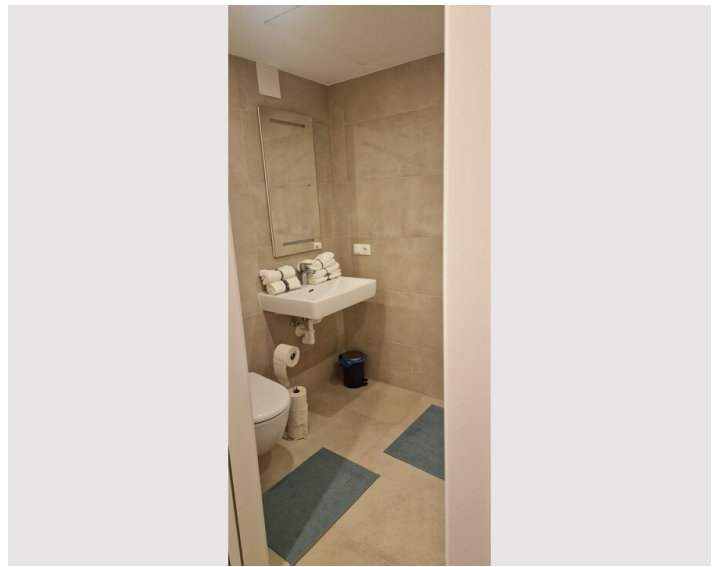
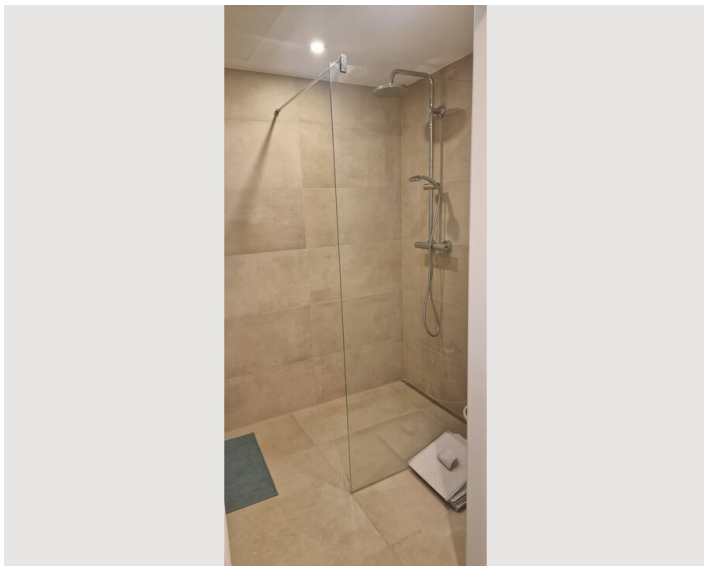
### Kitchen

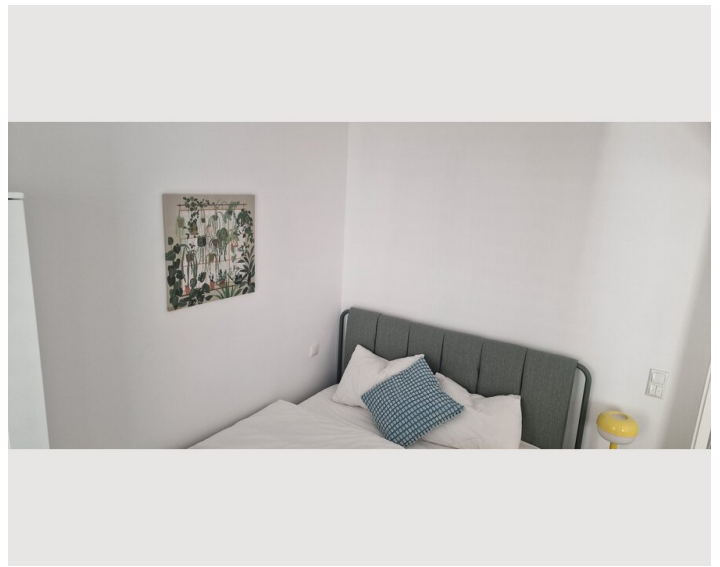
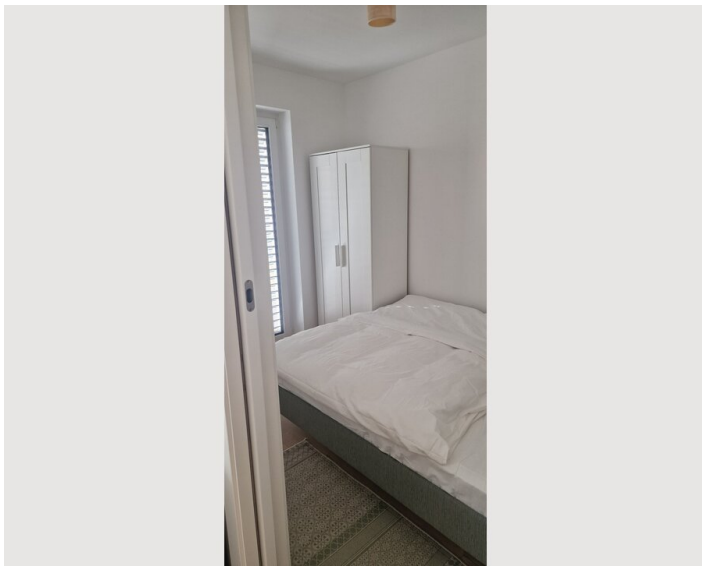
- Private kitchen
- Glasses/Tableware
- Dishwasher
- Cooking utensils
- Espresso machine

## Informations

- Suitable for children
- Short-term parking zone subject to a charge
- Pets forbidden
- Bicycle room free of charge
- Smoking not allowed
- Private entrance
- Regular cleaning at extra cost

## Picture gallery





### Infrastructure

📍 250m

Sports and shopping opportunities within walking distance,  
Surroundings: The Hessenpark and the city center with many shops, restaurants and pharmacies are in the immediate vicinity. Linz main square is only 900m away, nearest bus stop 170m, tram station 250m, main train station 1000m,  
The Danube with many sports options such as running, cycling, walking etc. is only 1100m on foot

Location

