



STUDIO APARTMENT, 2100 KORNEUBURG

Studio with Terrace close to Vienna

Object number: BRAE1

[View and rent online](#)

The Apartment is located in the center of the old town Korneuburg, therefore the Trainstation, Shops, Restaurants etc. are accessible on foot in a few minutes. If you prefer to live close to a big city & also in leafy surrounding, its perfect for you.

Period	09/03/ - 09/04/2026
Number of persons	2
Total incl. VAT.	€ 1.256,68
Security deposit	€ 900,00



Living space

21m²



Maximum occupancy

2 Persons



Complete accommodation [?]

1 Private bathroom 1 Living-Sleepingroom



Ground floor



Check-in

12:00 - 12:00 Clock



Check-out

12:00 - 12:00 Clock

Sleeping options

Living & Sleeping



1x Single bed



1x Extra bed

Description of accommodation

Living in a green environment but enjoying also the charming old town flair. The highlight of the Studio is the central location in the center of the old town Korneuburg. Therefore the Trainstation, Shops, Restaurants, Bakery and the Supermarket are accesible on foot in a few minutes.

Also the Trainstation is quite close (just 4 minutes by foot) - you can reach the border of Vienna by train or car within 8 minutes, as well as the center of Vienna within 25 minutes.

The Studio ist perfect, for those who want to live close to a big city but also in leavy surrounding. The quiet Studio is located on the ground flour and assessible through a locked atrium. The terrace and the outdoor furniture in the atrium allows to relax and enjoy the sunny days.

The WLAN, TV Access and Washing Machine of the Studio can be used free of charge.

Also the Kitchen is fully equiped - dishwasher, Mikrowave, a Nespresso Coffee Machine is available. Bedclothes, Towels and Tea Towels are also available.

There are suffice parkingslots in front of the apartment.

Equipment & Features



Basic equipment

- Terrace
- Internet/Wifi
- Private washing machine
- Towels
- Vacuum cleaner
- Garden sharing
- TV
- Bedclothes
- Private toilet



First supply

- Toilet paper
- Nespresso capsules
- Fridge filling on request



Kitchen

- Private kitchen
- Glasses/Tableware
- Dishwasher
- Cooking utensils
- Coffee machine
- Microwave

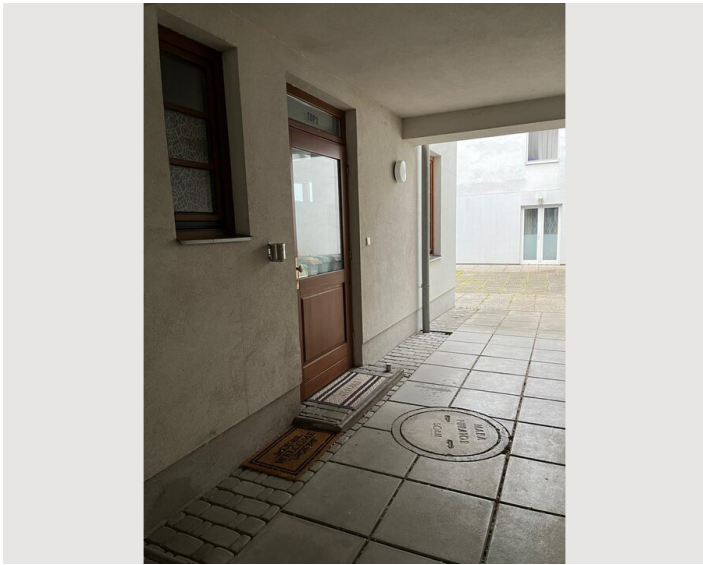
Informations

- Suitable for construction workers
- Smoking not allowed
- Desk/Workplace
- Pets on request
- Suitable for children
- Short-term parking zone subject to a charge
- Private entrance

Picture gallery









Video


[Goto Video](#)





Infrastructure

 4 minutes' walk

 30 minutes by car / 50 minutes by train

 2 minutes' walk

 4 minutes' walk

 4 minutes' walk

There are Restaurants, Shops, Restaurants, Bakery, Supermarket and Trainstation within walking distance reachable. Also early birds can enjoy breakfast - a bakery close to the trainstation open early in the morning. There are many opportunities for spending the leisure time close to the apartment for example the "Werftbad Korneuburg" at the Donau, and several cycle tracks.

Also in Vienna which is quite close are many free time opportunities - there are low distance from the apartment to for example Prater (17 km), Stephansdom (18 km), Schwedenplatz(18 km) or Donaupark (18 km) and the Universitys (WU Wien 18 km, TU Wien 21,5 km, Hauptuniversität 18 km).

Location

