



2 ROOM APARTMENT, 1020 VIENNA

# stunning apartment next to train station and danube

Object number: LIAU1

[View and rent online](#)

Apartment with view of the danube, that's also right next to a subway station.

Period	20/12/2025 - 20/01/2026
Number of persons	2
Total incl. VAT.	€ 3.257,59
Security deposit	€ 2.500,00



**Living space**

57m²



**Maximum occupancy**

3 Persons



**Complete accommodation**

1 Private bathroom 1 Separated bedroom 1 Living-Sleepingroom



**10. floor**

Elevator available



**Check-in**

14:00 - 23:59 Clock



**Check-out**

01:00 - 11:00 Clock

## Sleeping options

### Sleeping room



1x Double bed (1,80 m x 2 m)

### Living and sleeping



1x Sofa bed (1 person)

## Descripton of accommodation

Our accommodation features a cozy bedroom for two, a modern bathroom with a washing machine, a spacious living room with an open kitchen, and an inviting balcony.

In the living room, you'll find a television that easily connects to your laptop. Instead of traditional air conditioning, we offer floor cooling for comfortable temperatures. Additionally, there is a sofa bed that can be pulled out if needed.

The kitchen is fully equipped with pots, dishes, and cutlery, perfect for shared cooking evenings with friends or for enjoying a leisurely meal alone.

The balcony of this apartment offers a splendid view of the southeastern side of the New Danube and bathes the apartment in beautiful morning light.

Smoking is only allowed on the balcony

## Equipment & Features



### Basic equipment

- Balcony
- TV
- Bedclothes
- Private toilet
- Vacuum cleaner
- Cleaning utensils
- Internet/Wifi
- Private washing machine
- Towels
- Aircondition
- Iron & ironing board
- Hairdryer



### Wellness

- Fitness room



### First supply

- Toilet paper
- Soap
- shampoo
- Nespresso capsules



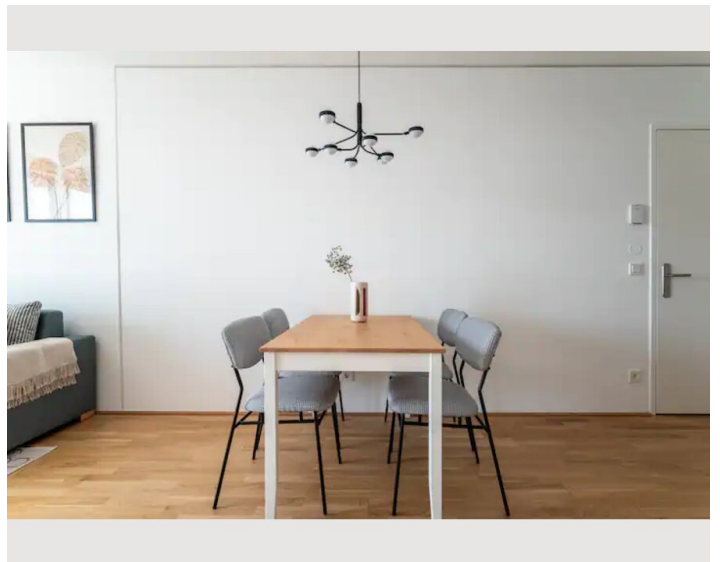
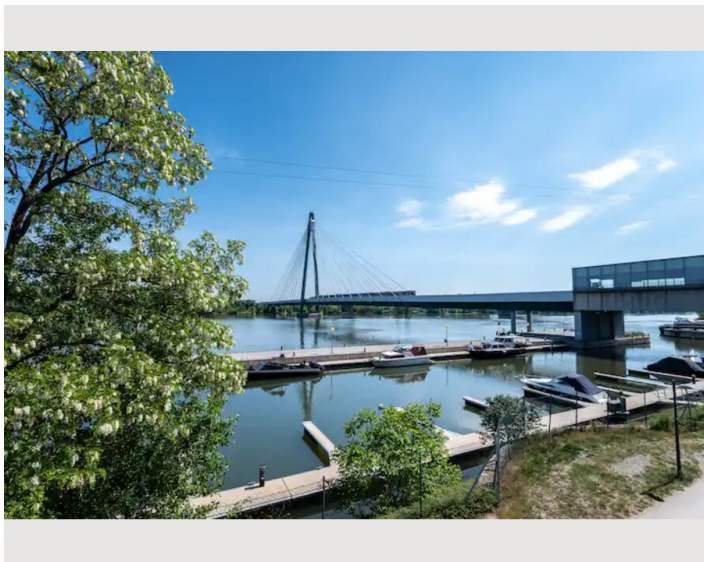
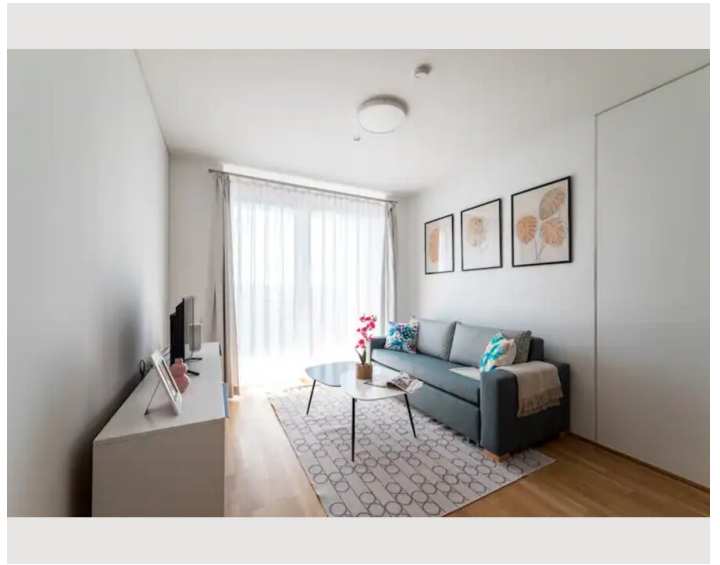
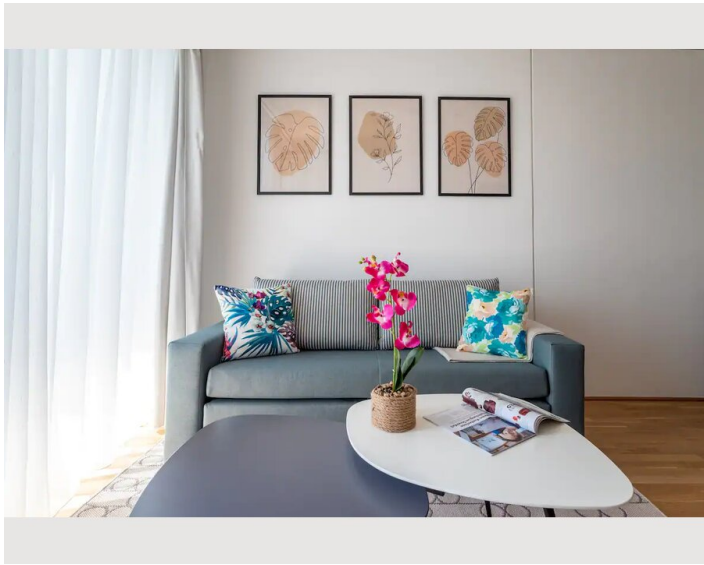
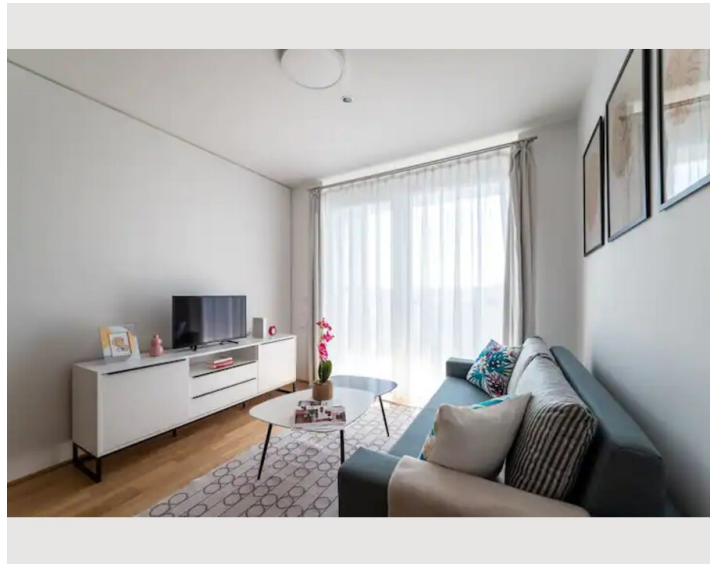
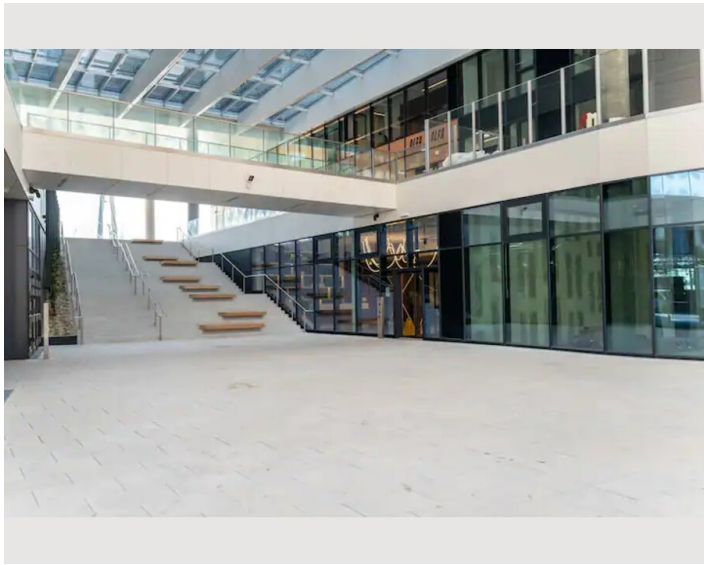
### Kitchen

- Private kitchen
- Glasses/Tableware
- Dishwasher
- Cooking utensils
- Coffee machine
- Microwave

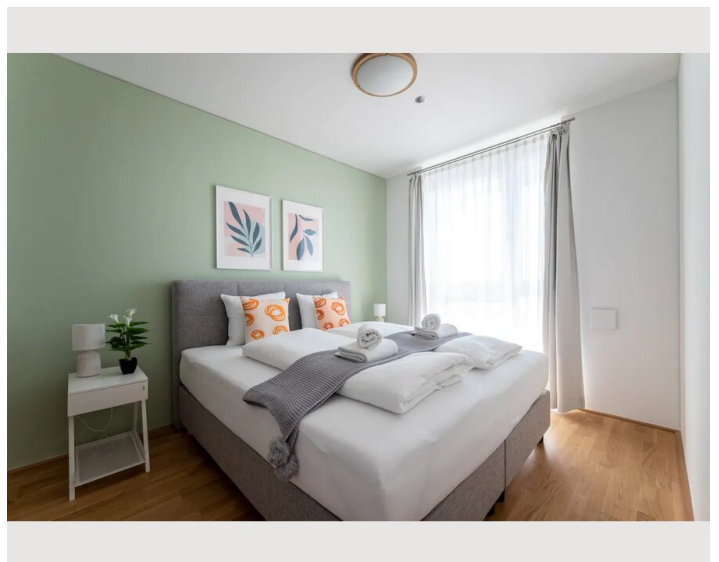
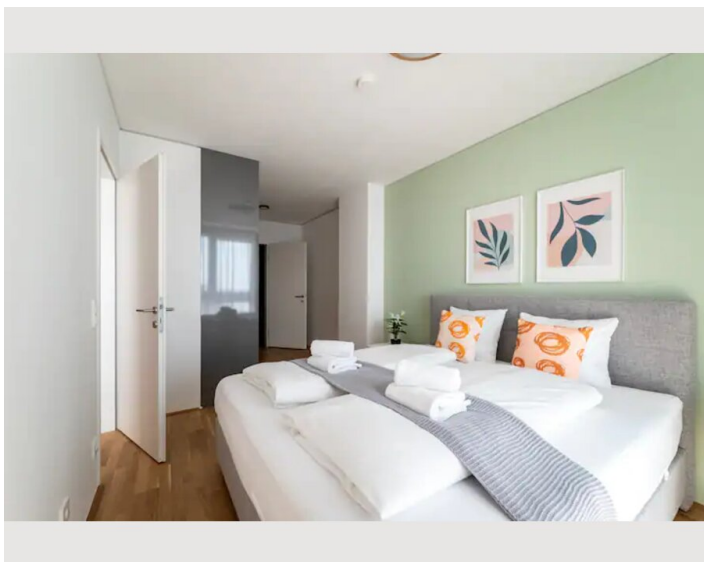
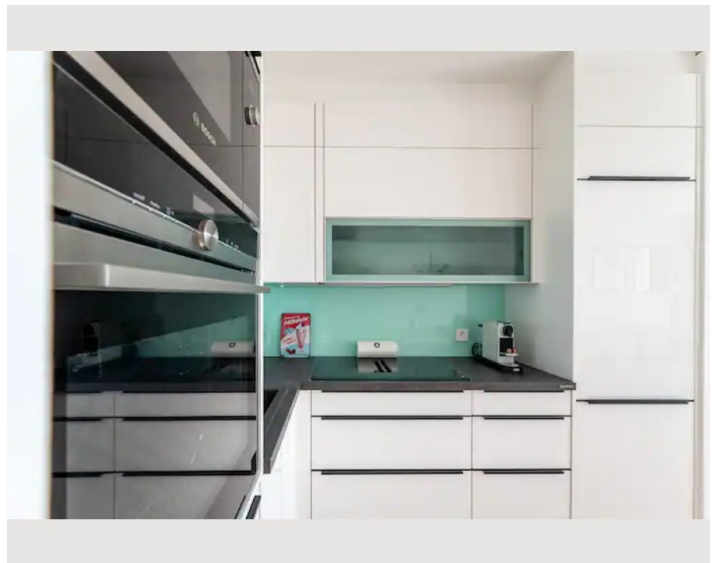
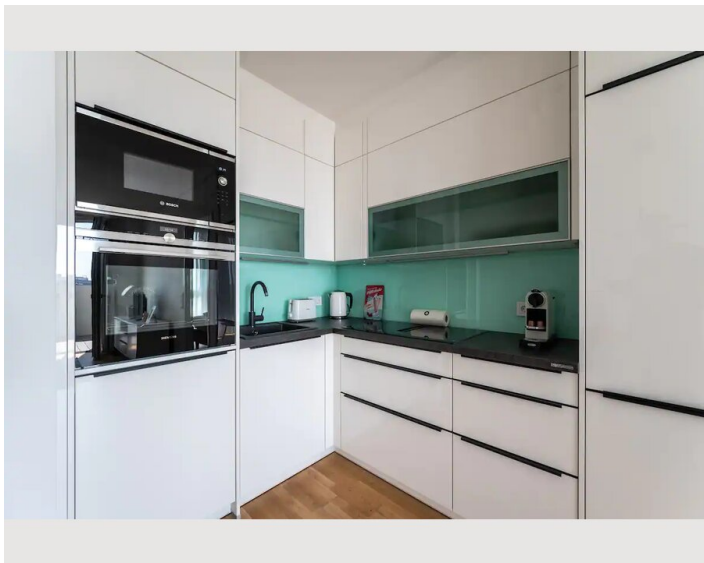
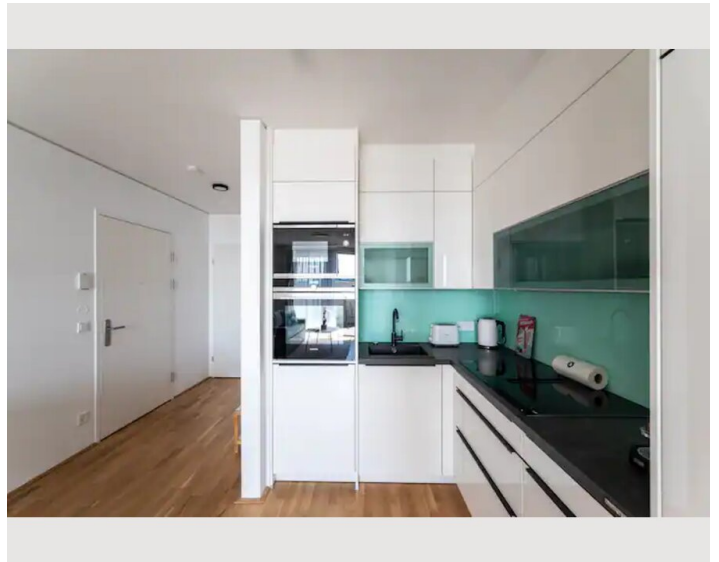
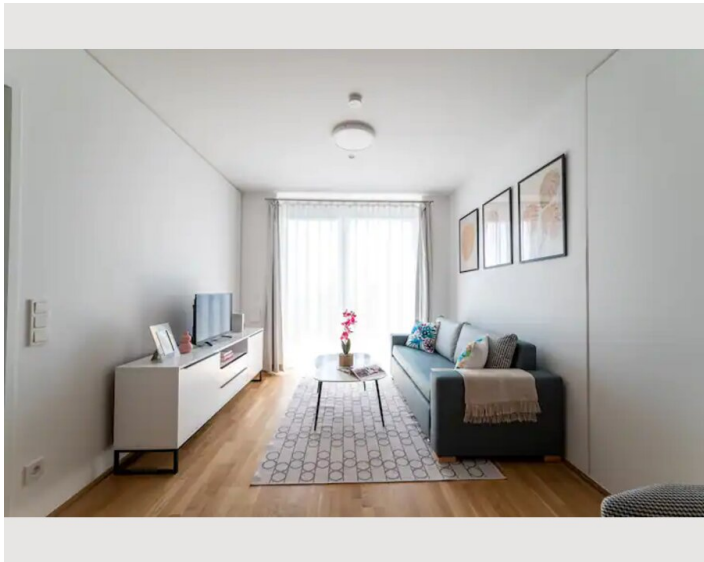
## Informations

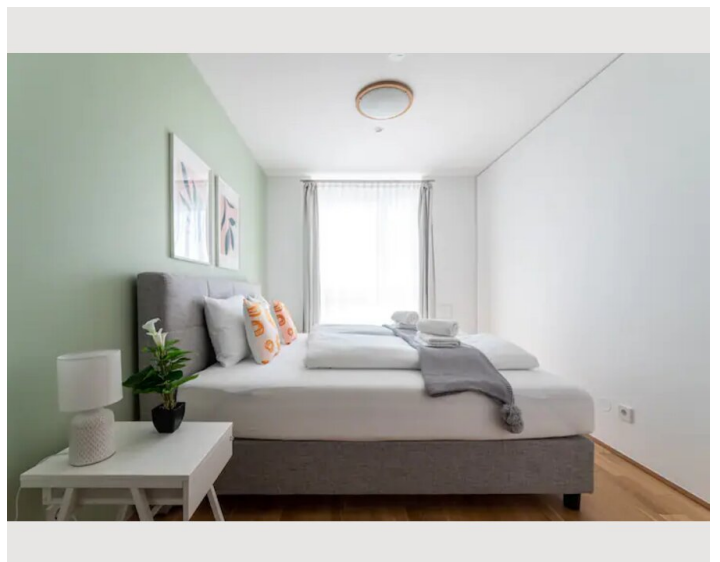
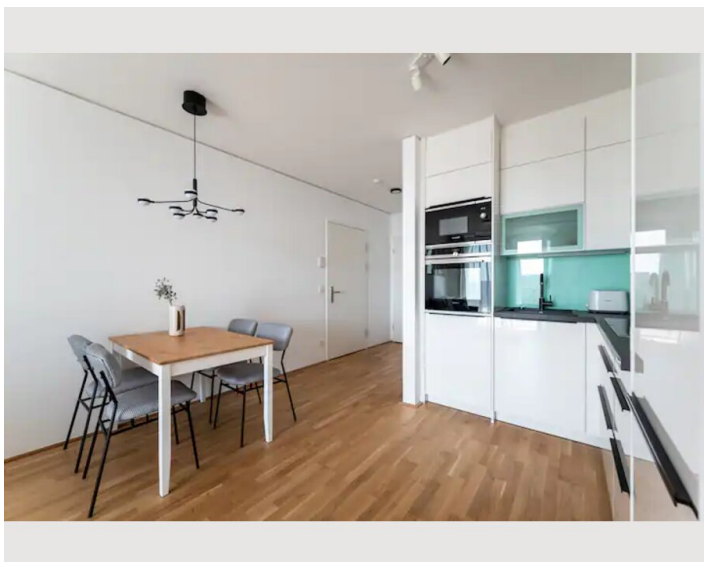
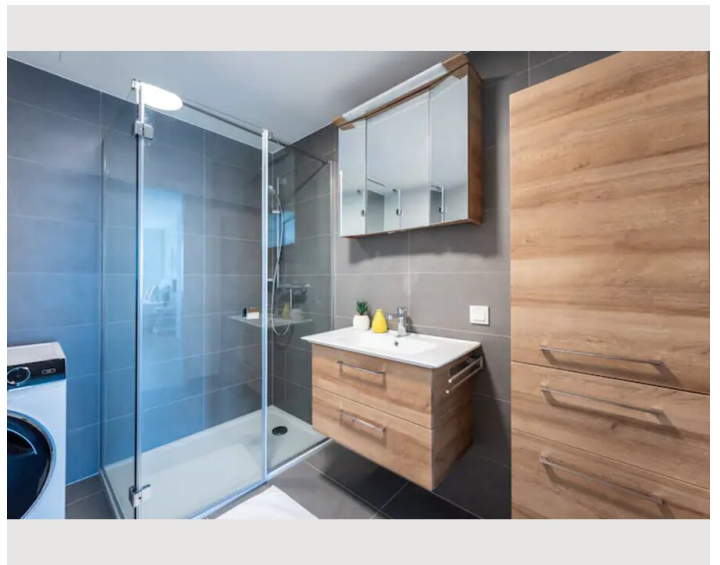
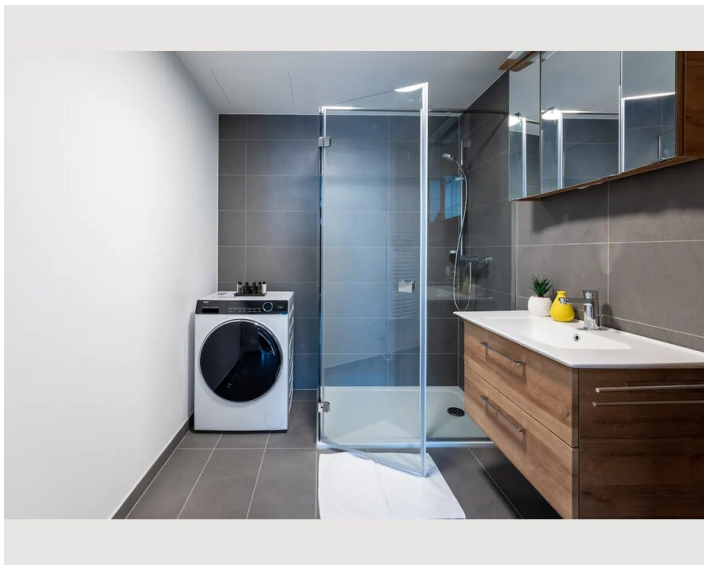
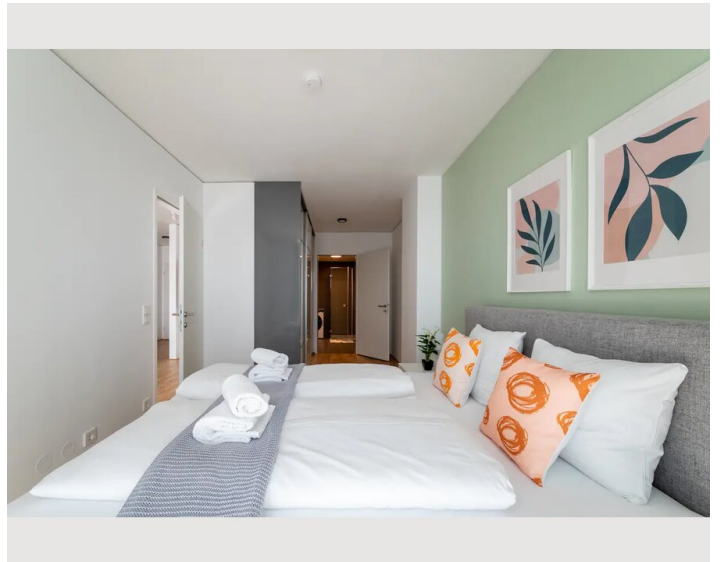
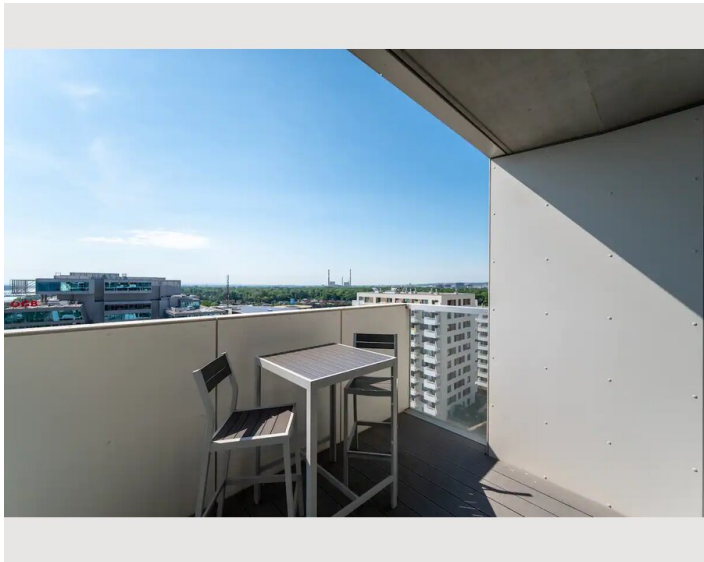
- Suitable for children
- Short-term parking zone subject to a charge
- Regular cleaning at extra cost
- Smoking allowed
- Pets forbidden
- Bicycle room free of charge

## Picture gallery

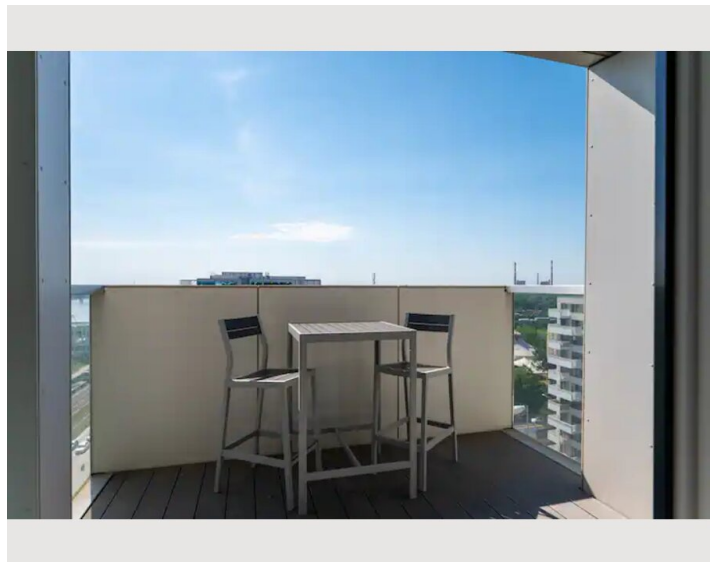
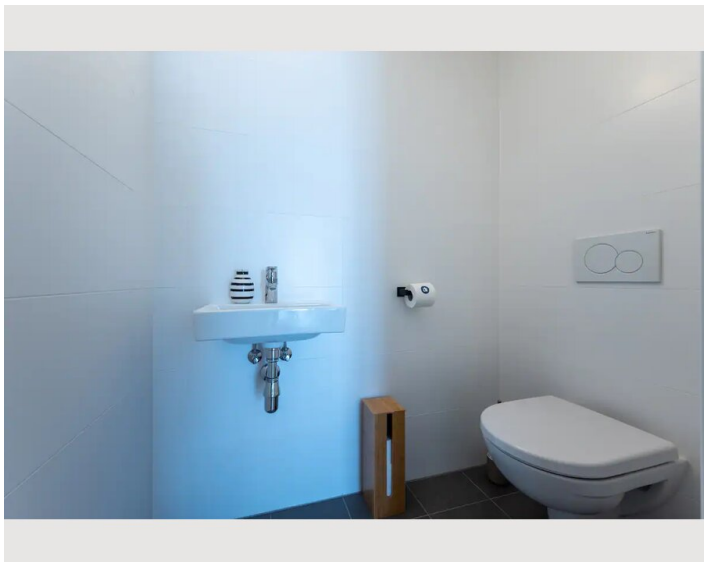
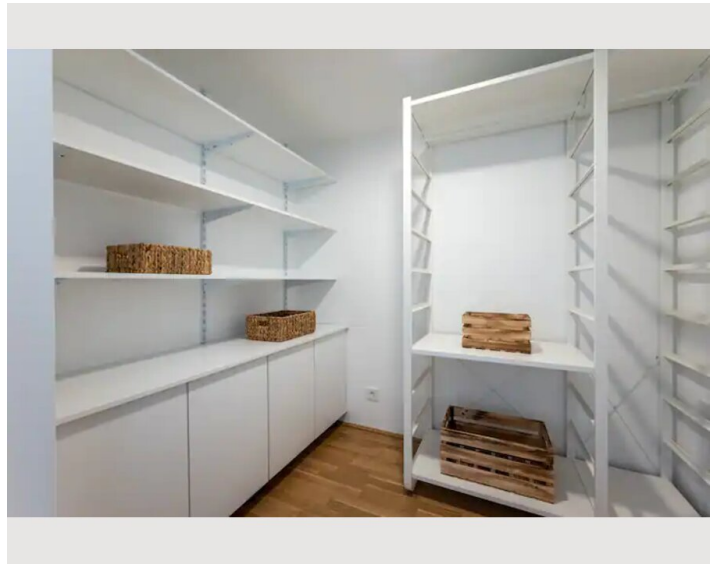
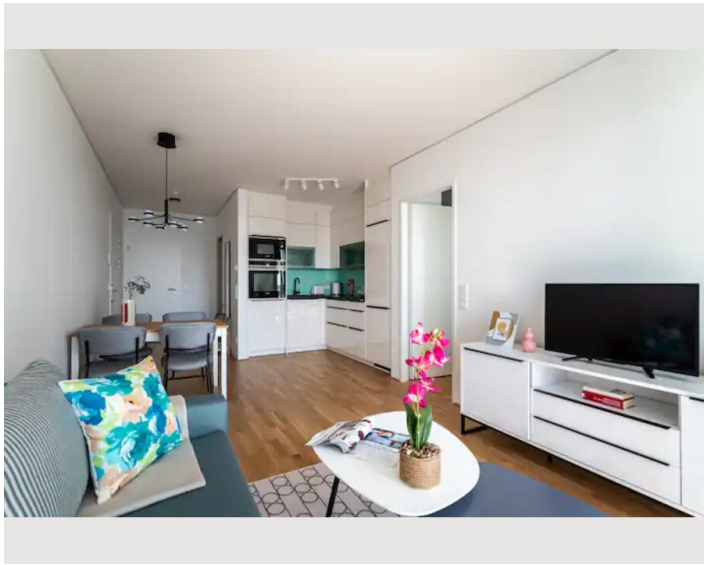
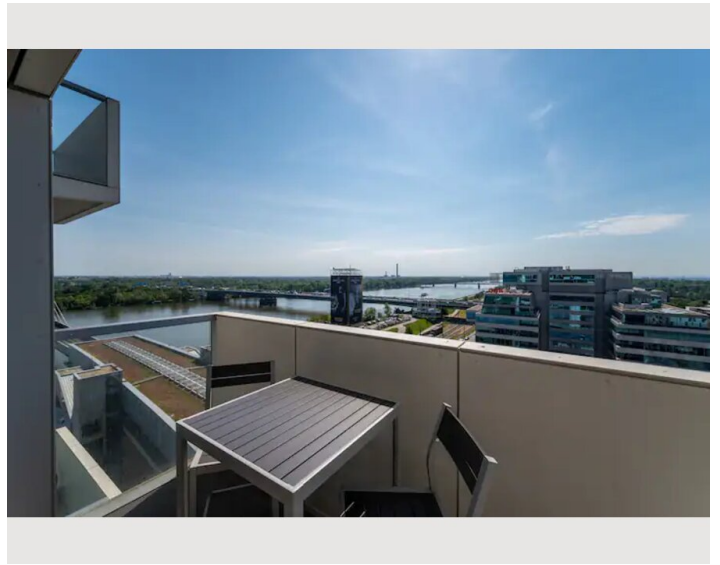
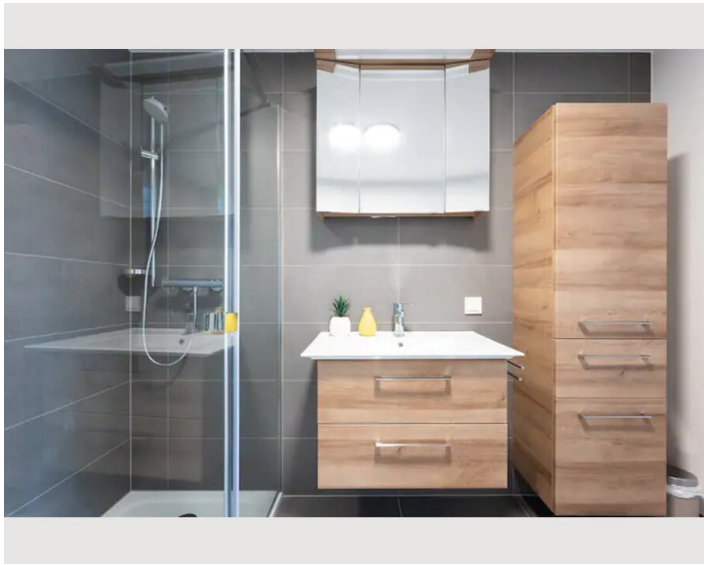


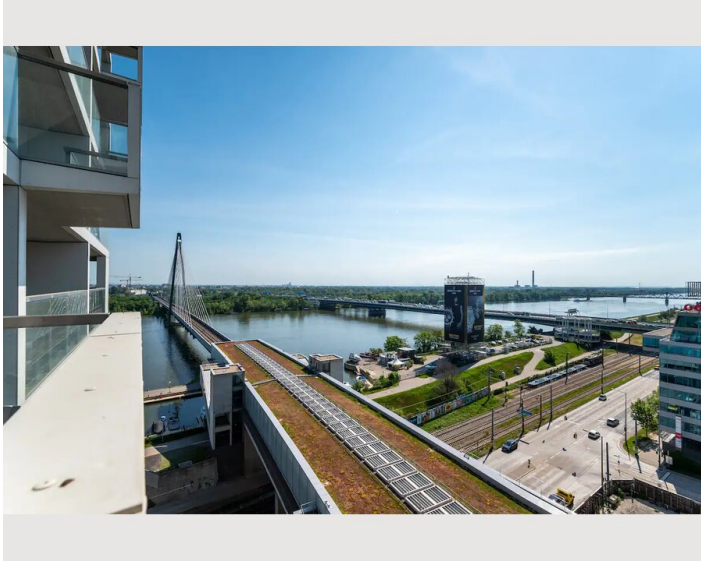
















### Infrastructure

-  Supermarket right across the apartment complex
-  few stops away from train station Prater
-  Busstop that gets you straight to the airport
-  Bus, that gets you straight to the airport

---

The accommodation is charmingly situated near the picturesque Danube riverside and the lively city center. The subway is easily accessible. A bus provides a direct connection to the airport. An affordable parking garage (€5/day) is available. In the vicinity, you'll find a supermarket and delightful restaurants, as well as a modern fitness studio, all within a leisurely 5-minute walk. A pharmacy is also available right across the subway station



## Location

