



2 ROOM APARTMENT, 1020 VIENNA

## cozy apartment next to subway station and danube

Object number: LIAE2

[View and rent online](#)

Apartment that is right next to a subway station and a bus line that takes you straight to the airport

<b>Period</b>	09/12/2025 - 09/01/2026
<b>Number of persons</b>	2
<b>Total incl. VAT.</b>	€ 3.029,16
Security deposit	€ 2.300,00



### Living space

45m<sup>2</sup>



### Maximum occupancy

3 Persons



### Complete accommodation <sup>?</sup>

1 Private bathroom 1 Separated bedroom 1 Living-Sleepingroom



### 4. floor

Elevator available



### Check-in

14:00 - 23:59 Clock



### Check-out

01:00 - 11:00 Clock

## Sleeping options

### Sleeping room



1x Double bed (1,80 m x 2 m)

### Living and sleeping



1x Sofa bed (1 person)

## Descripton of accommodation

We have a bedroom for two, a bathroom with a washing machine, a living room with an open kitchen and a balcony

In the living room we have a TV that you can link to your laptop, air conditioning, heating and a sofa bed that you can pull out.

The kitchen is fully equipped with pots, crockery and cutlery perfect for a joint cooking evening with friends or alone ;)

Our balcony faces the inside of the building, so it's nice and quiet. The apartment is also good for working as you can't hear any street noise.

## Equipment & Features



### Basic equipment

- Balcony
- TV
- Bedclothes
- Private toilet
- Iron & ironing board
- Hairdryer
- Internet/Wifi
- Private washing machine
- Towels
- Vacuum cleaner
- Cleaning utensils



### Wellness

- Fitness room



### First supply

- Toilet paper
- Soap
- shampoo
- Nespresso capsules



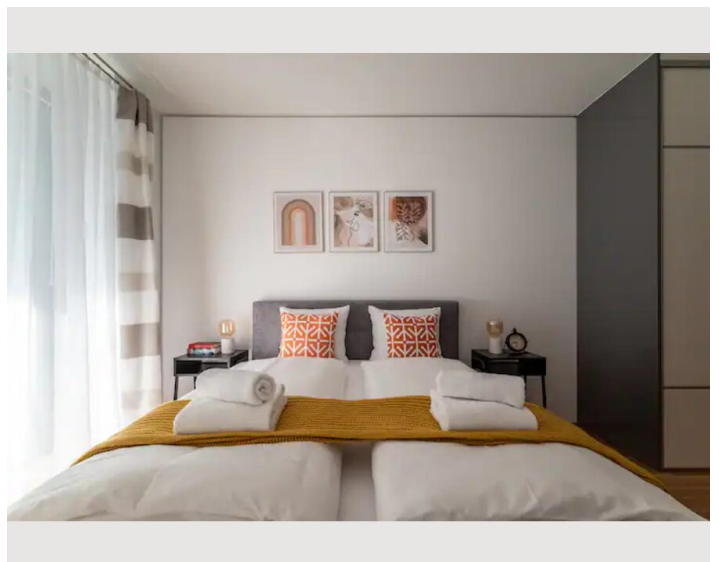
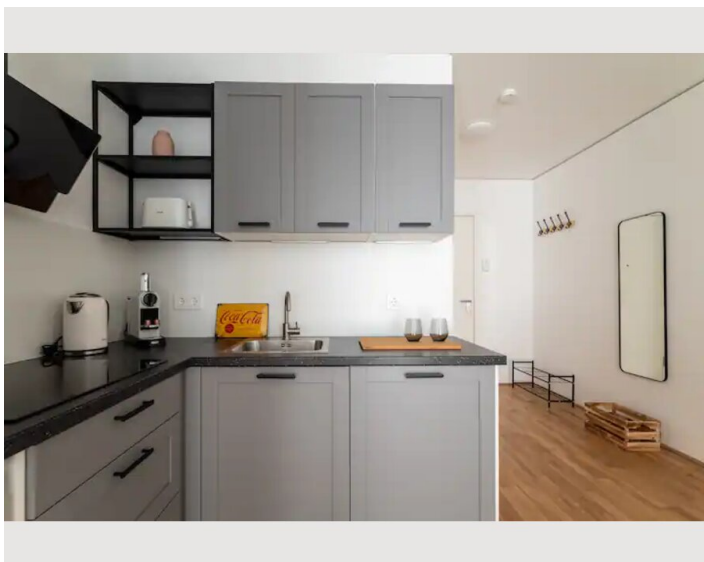
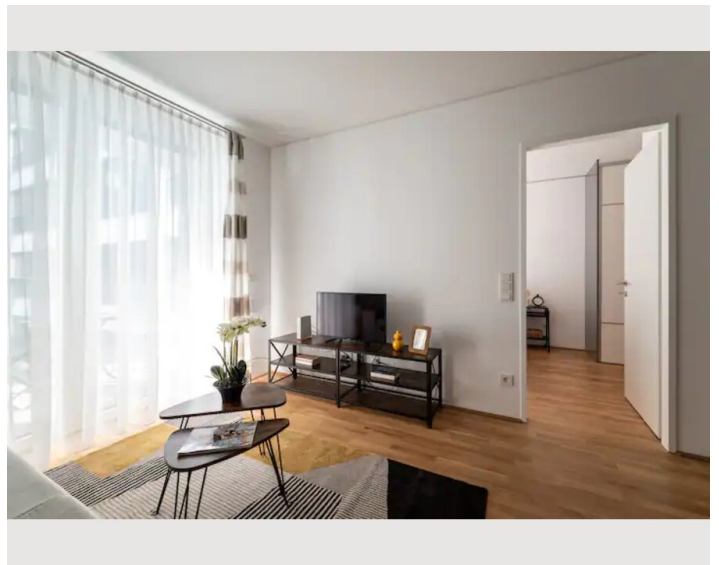
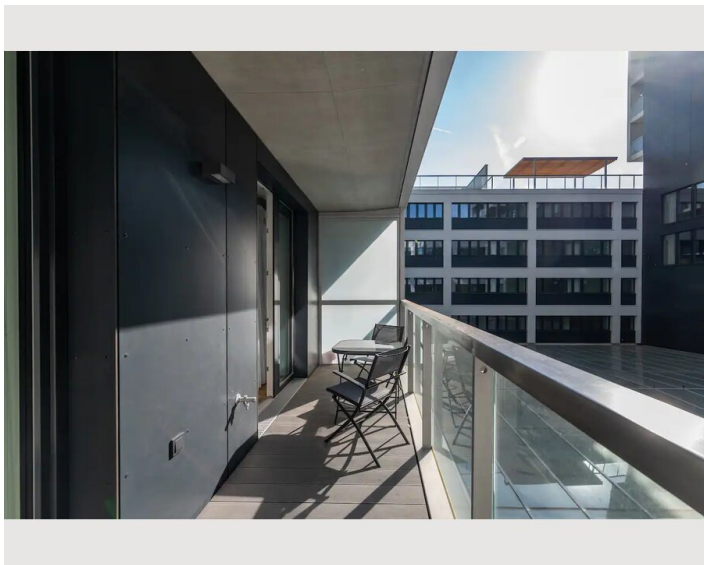
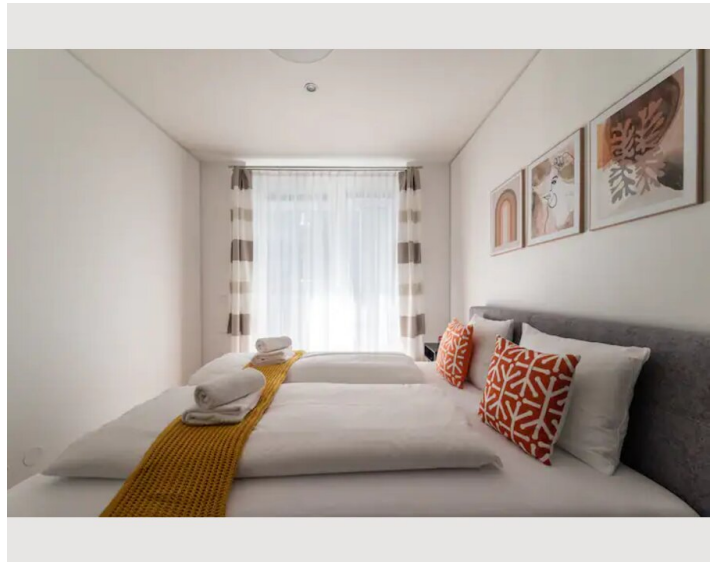
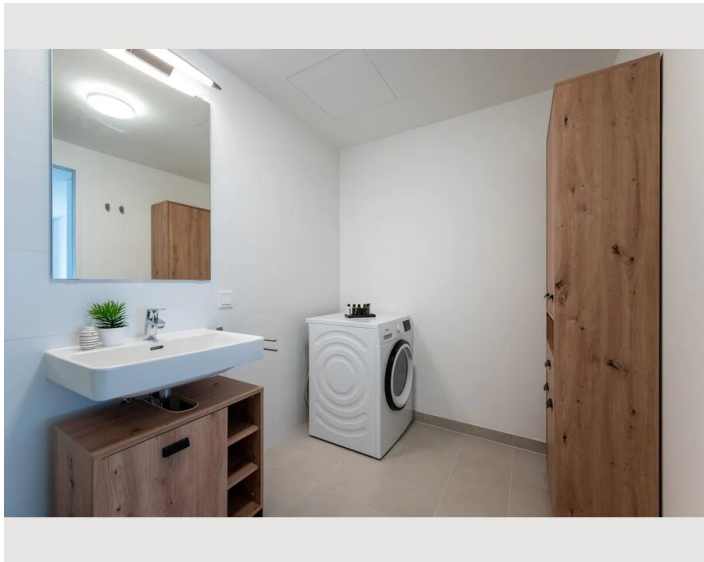
### Kitchen

- Private kitchen
- Glasses/Tableware
- Dishwasher
- Cooking utensils
- Coffee machine
- Microwave

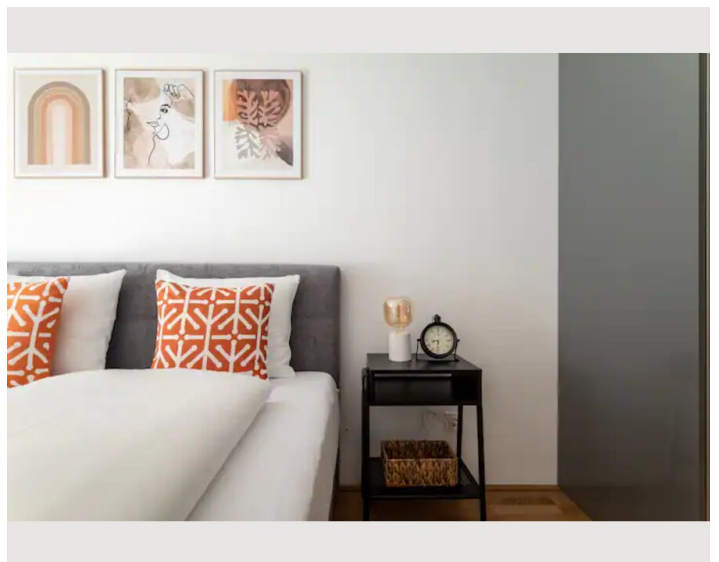
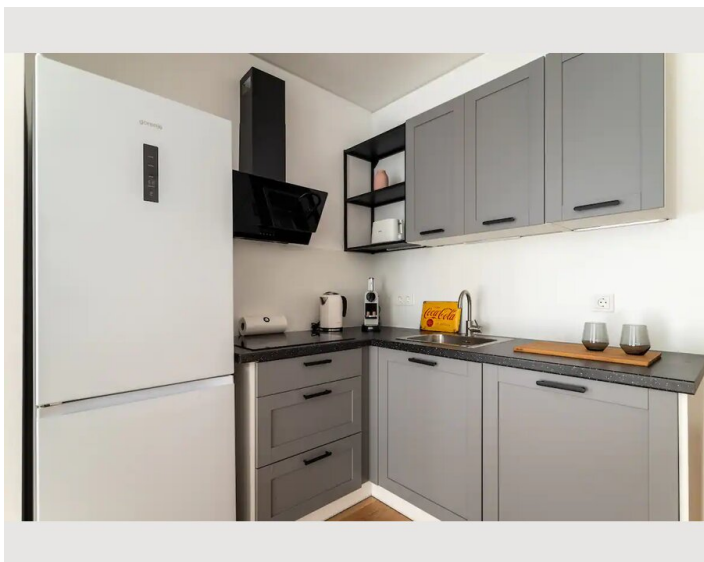
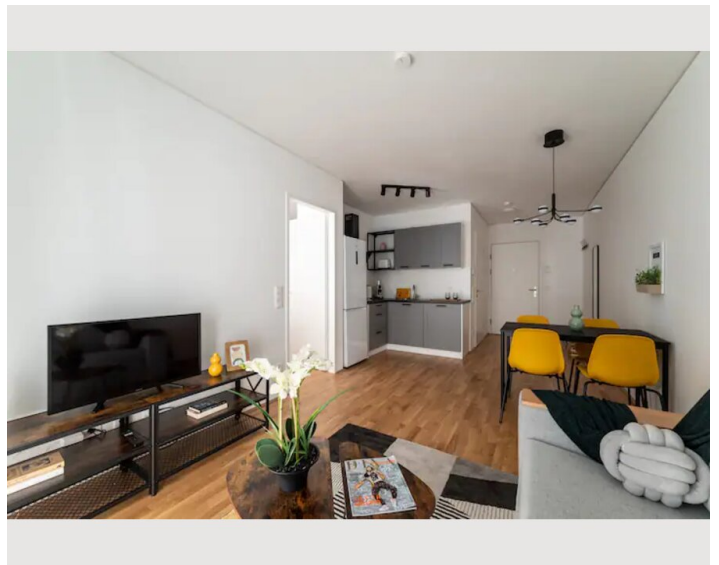
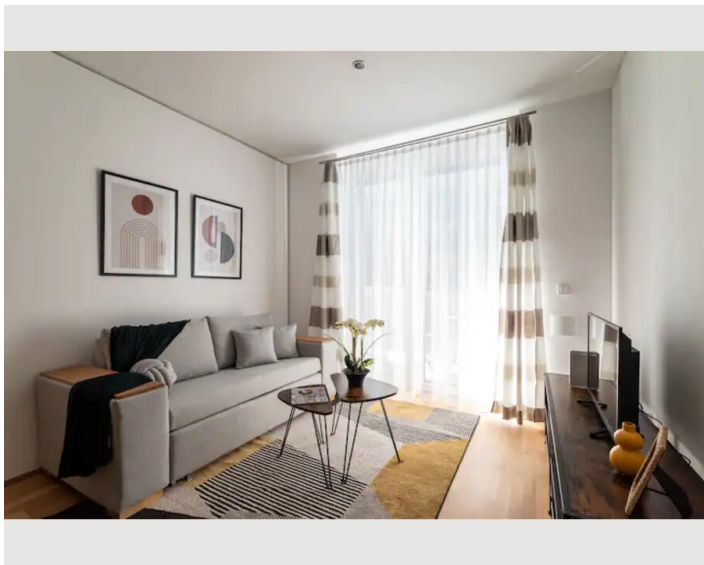
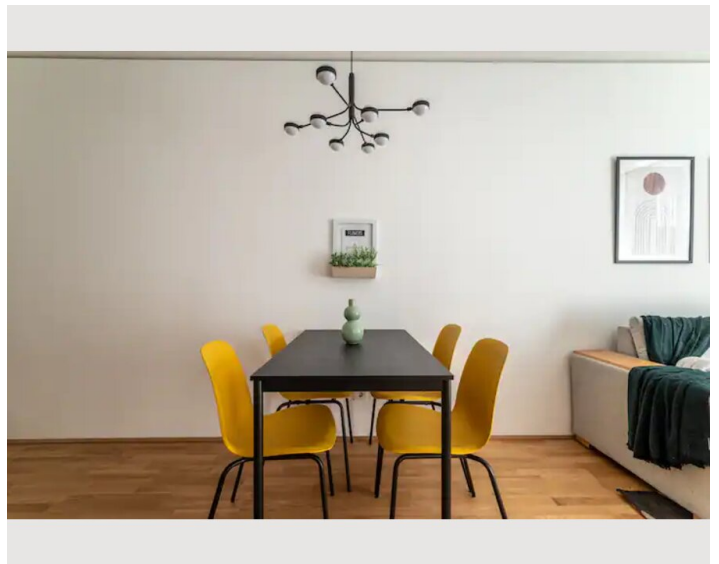
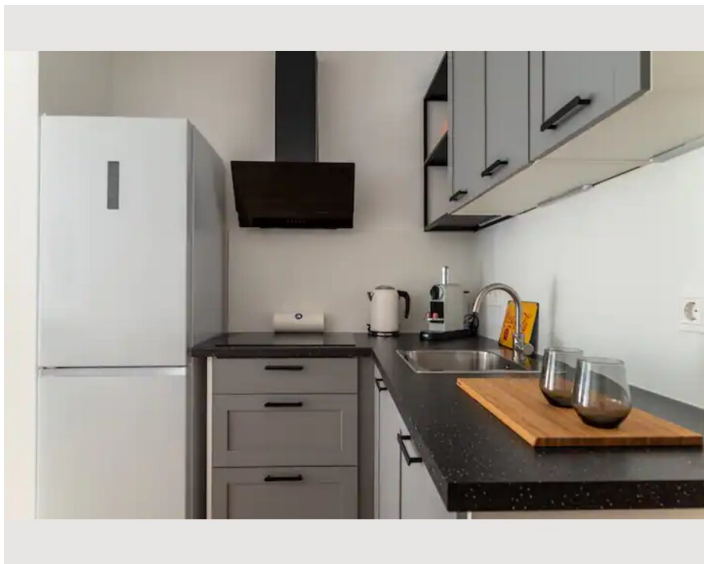
## Informations

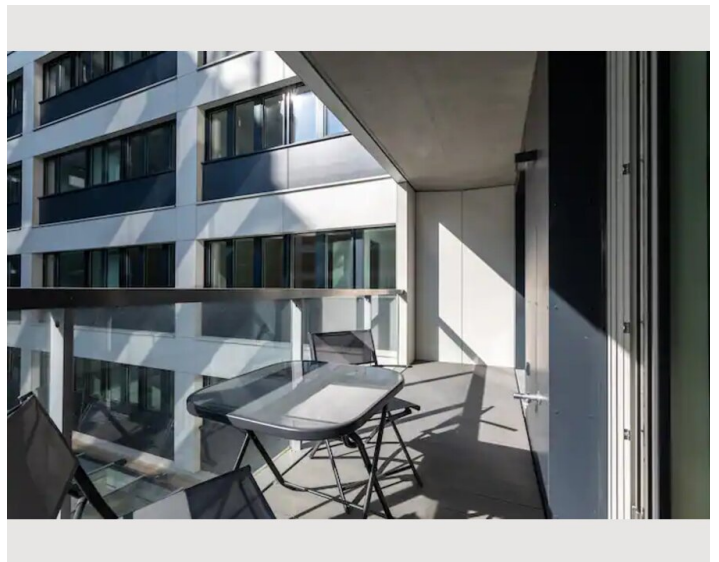
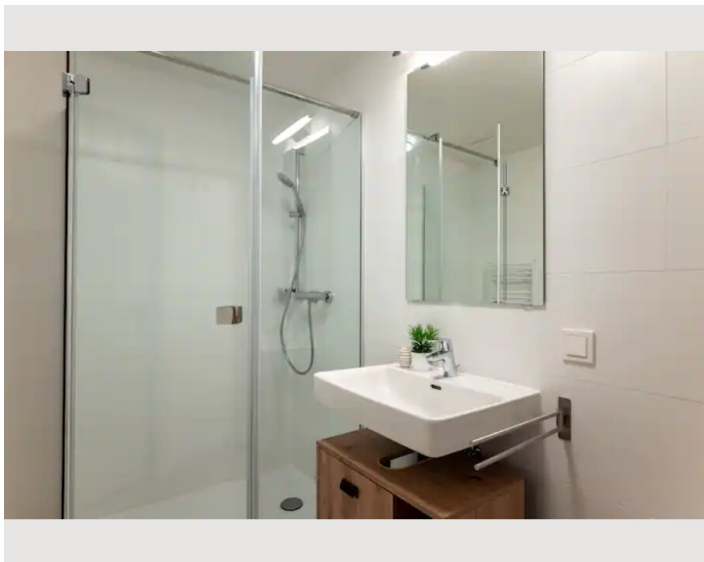
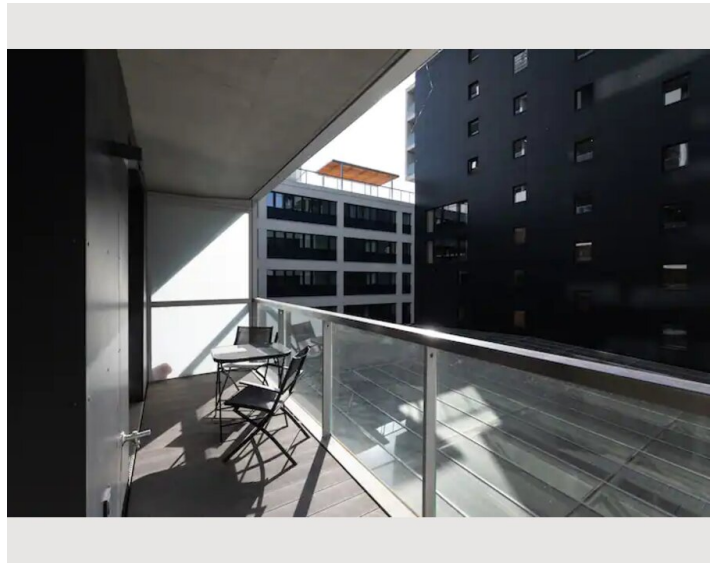
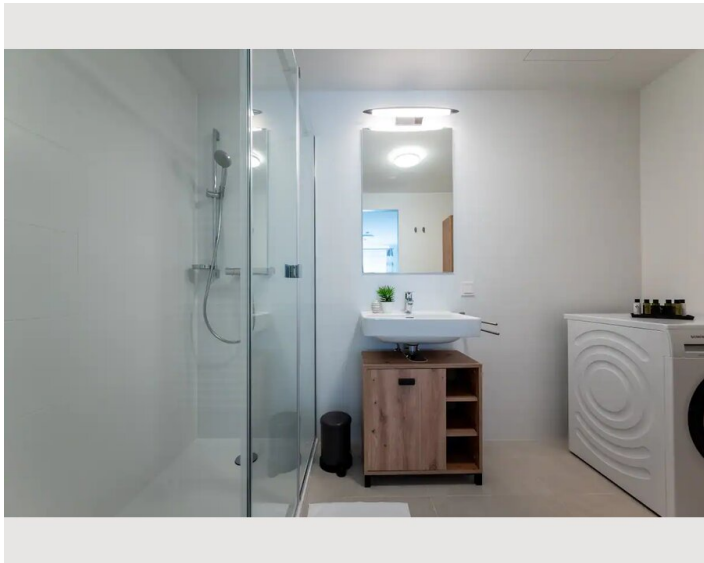
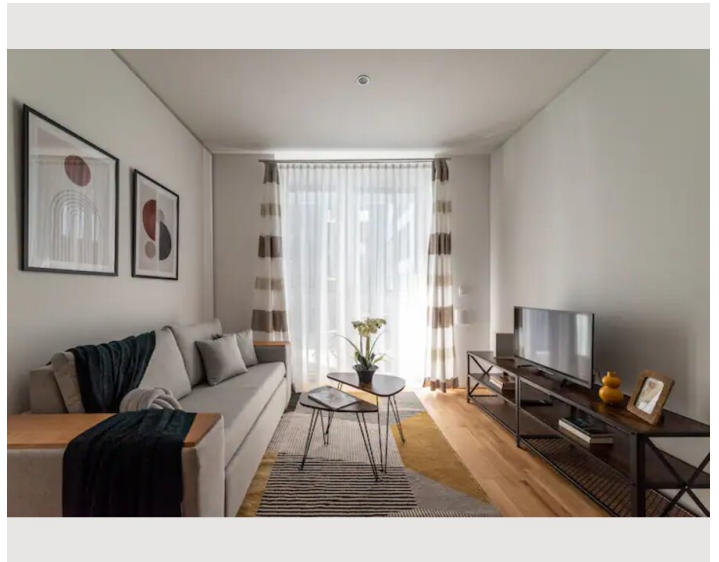
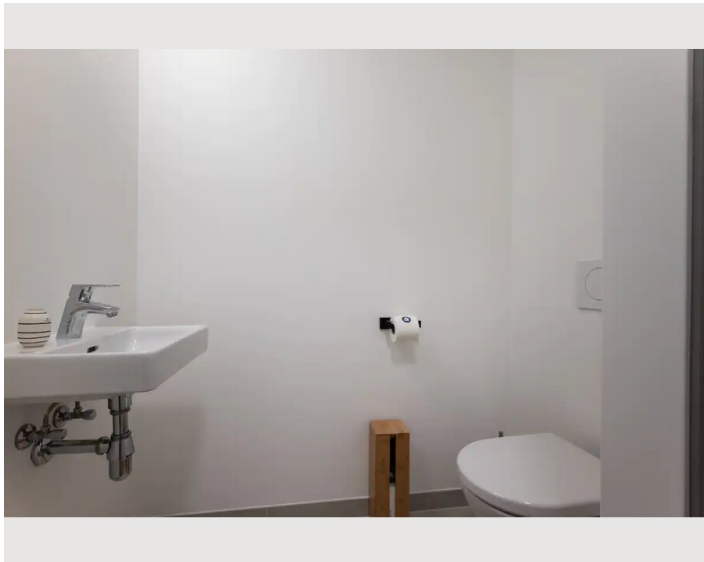
- Suitable for children
- Short-term parking zone subject to a charge
- Regular cleaning at extra cost
- Smoking allowed
- Pets forbidden
- Bicycle room free of charge

## Picture gallery

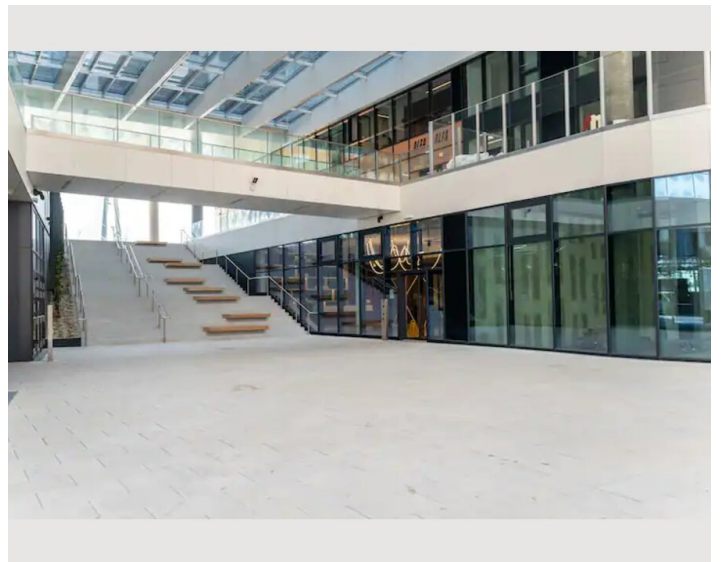
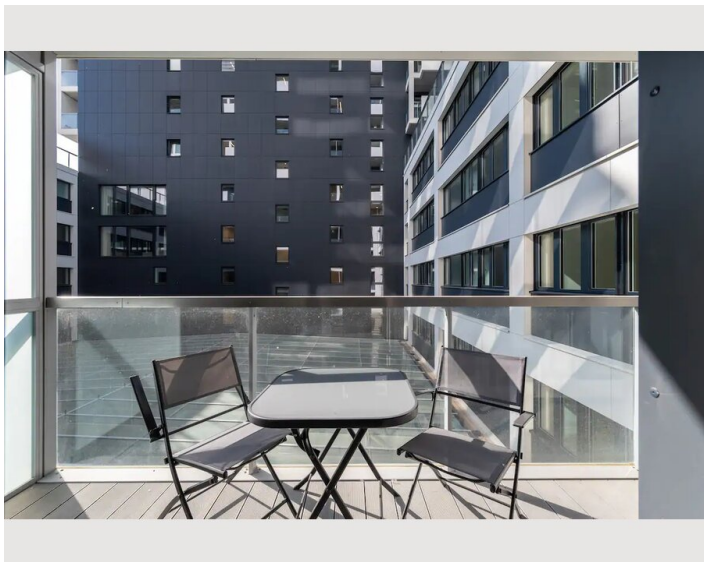
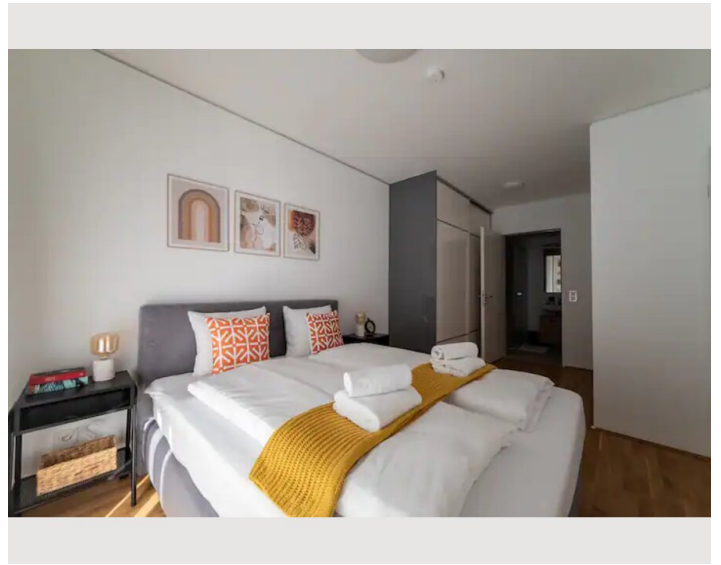
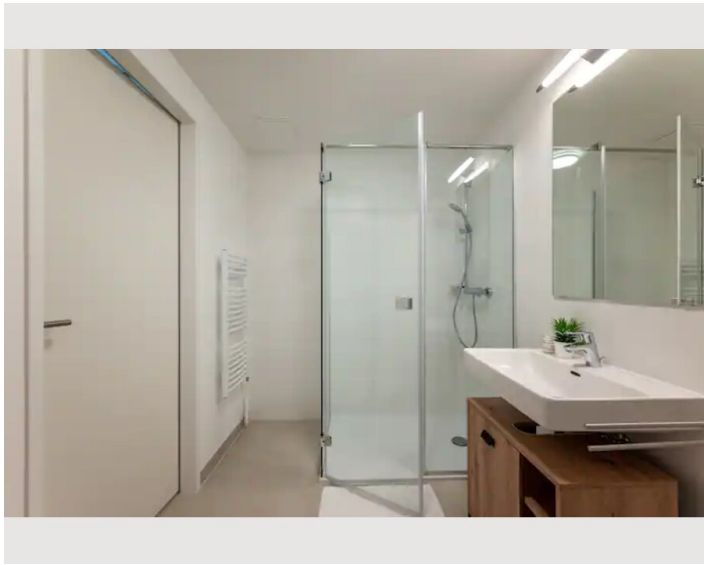
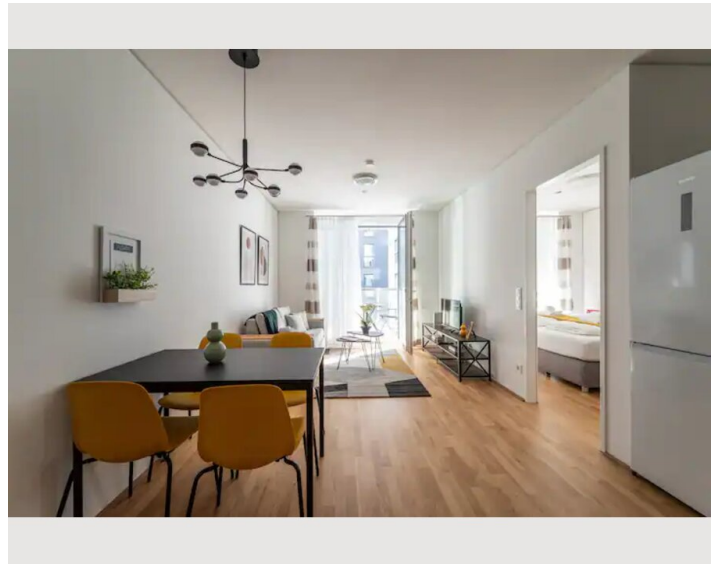
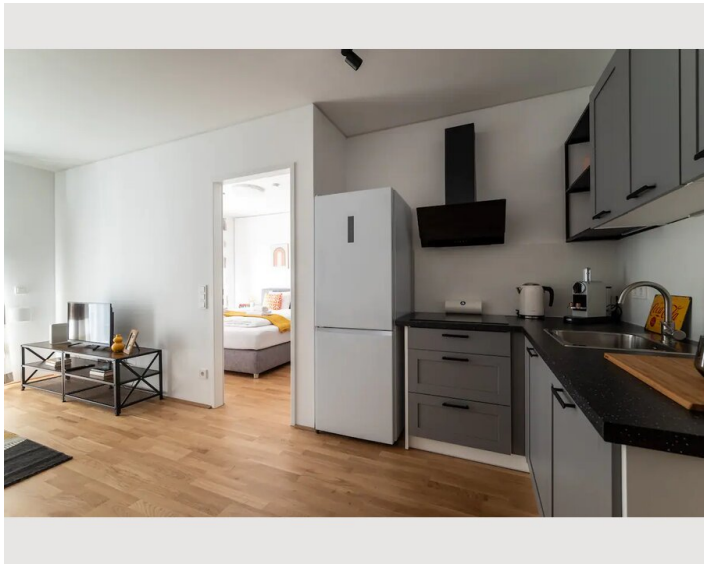

















### Infrastructure

 Busstop that gets you straight to the airport

 Bus, that gets you straight to the airport

 Supermarket right across the apartment complex

 few stops away from train station Prater

---

The accommodation is close to the banks of the Danube and the city center, which you can easily reach by the subway nearby. For a quick & easy way to the airport there is a bus that will take you there directly. There is also a multi-storey car park, which costs €5 per day. In the area we also have a supermarket, a restaurant and a gym. All those are in a 5 minute radius from the apartment. A pharmacy is also right across the subway-station



## Location

