



STUDIO APARTMENT, 1150 VIENNA

## Cozy Apartment

Object number: JWNQ1

[View and rent online](#)

Modern and cozy apartment. Includes kitchen, bathroom and comfortable living room with bed for 2, Wifi, TV, etc.

<b>Period</b>	12/06/ - 12/07/2026
<b>Number of persons</b>	2
<b>Total incl. VAT.</b>	€ 923,58
Security deposit	€ 800,00

**Living space**20m<sup>2</sup>**Maximum occupancy**

2 Persons

**Complete accommodation** 

1 Private bathroom 1 Living-Sleepingroom

**1. floor****Check-in**

16:00 - 22:00 Clock

**Check-out**

06:00 - 13:00 Clock

**Sleeping options****Living & Sleeping**

1x Double bed (1,60 m x 2 m)

**Description of accommodation**

We offer you a freshly renovated, beautiful and clean apartment for the best possible and comfortable stay. You will receive all the basic equipment you need: Towels, shampoos, etc.

Check In is from 16:00 to 22:00 and  
Check out is until 13:00.

The entire apartment is at your disposal.

Note: The exterior of the building is currently being renovated.

## Equipment & Features



### Basic equipment

- Internet/Wifi
- TV
- Bedclothes
- Private toilet
- Vacuum cleaner
- Cleaning utensils
- Music system/docking station
- Private washing machine
- Towels
- Parking space
- Iron & ironing board
- Hairdryer



### First supply

- Toilet paper
- Soap
- shampoo



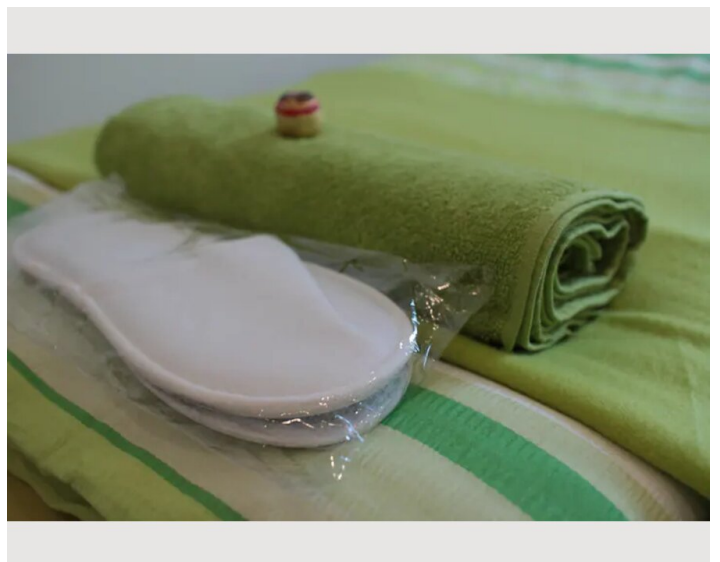
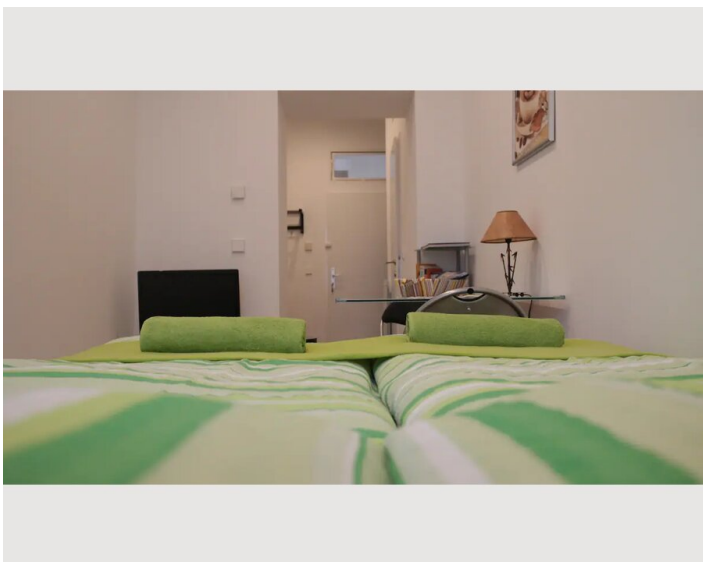
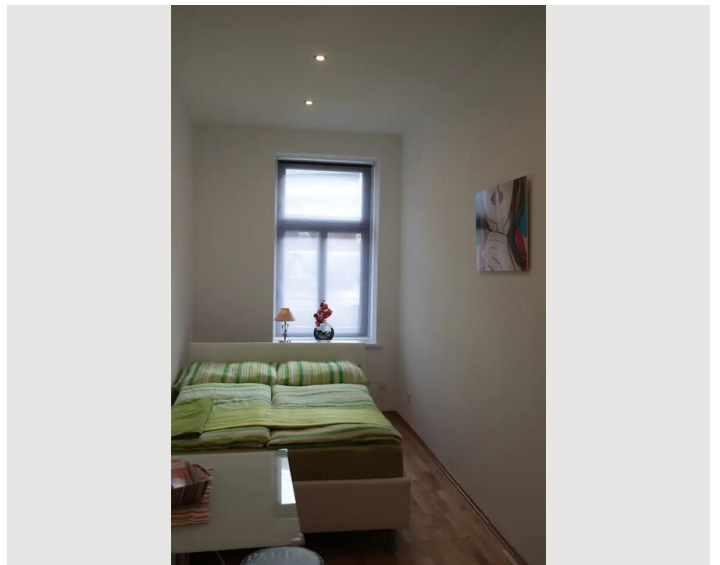
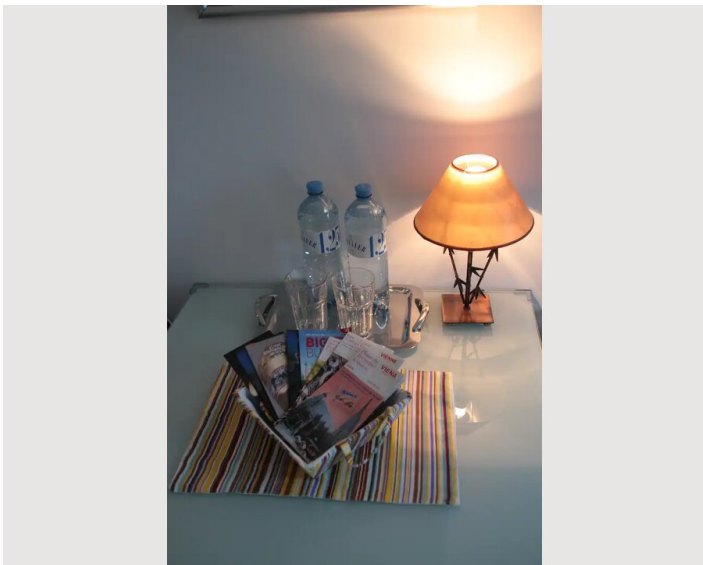
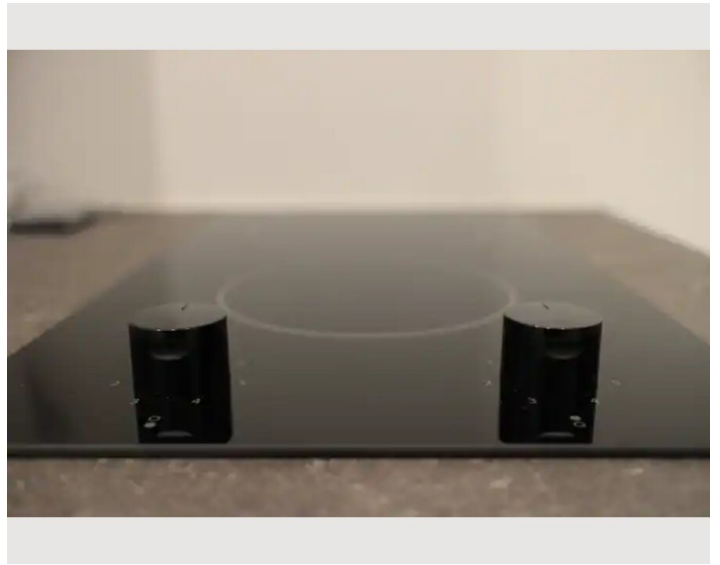
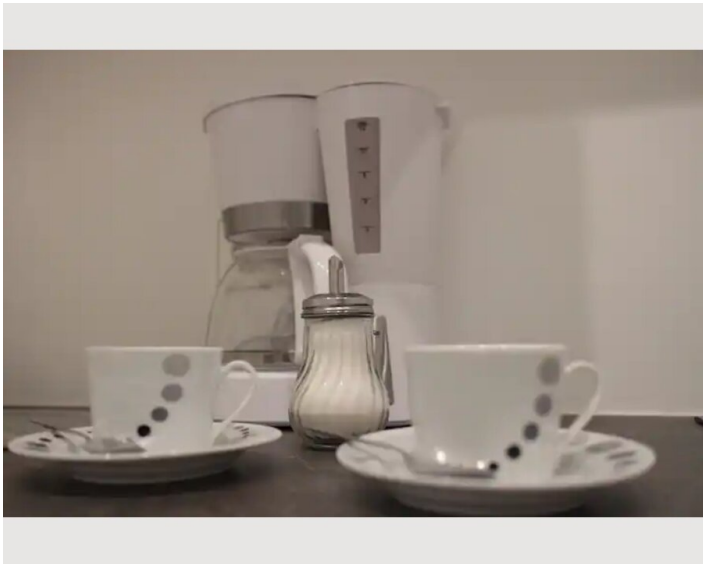
### Kitchen

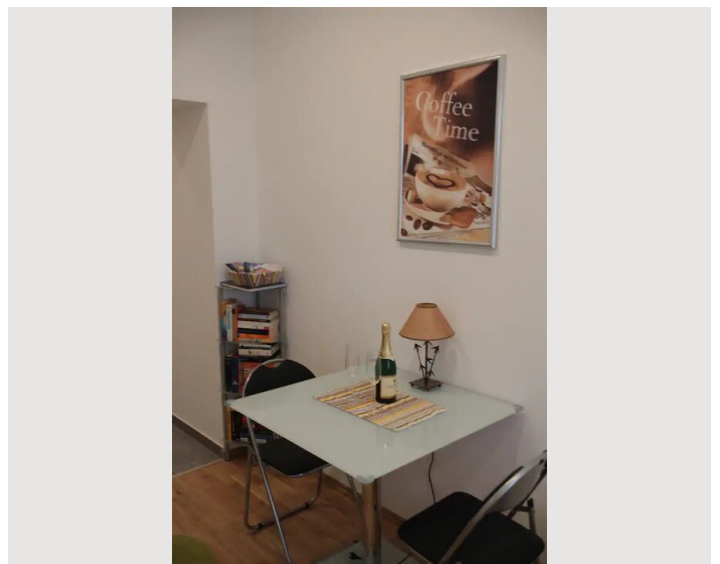
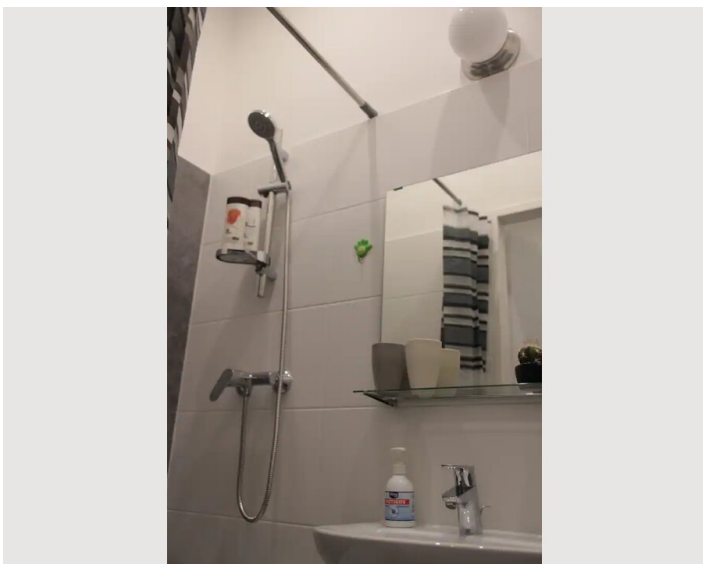
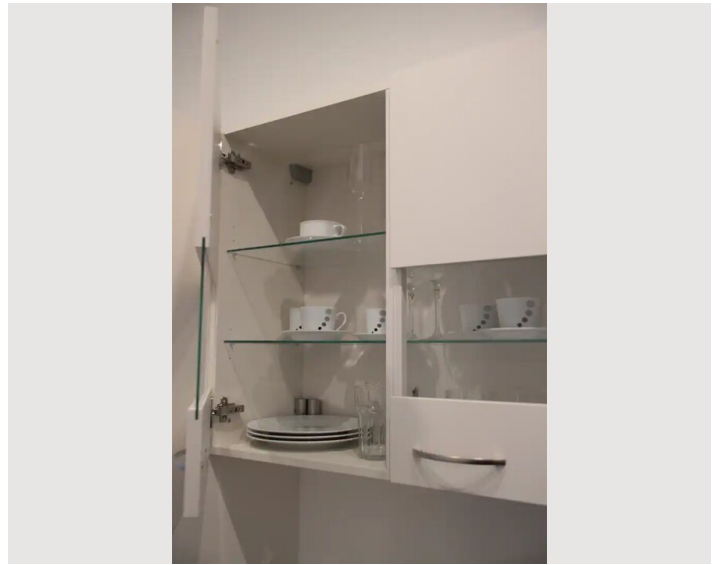
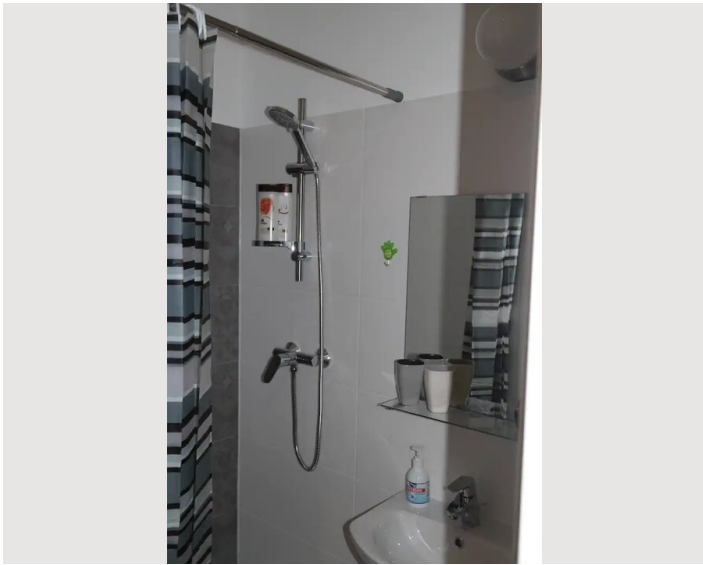
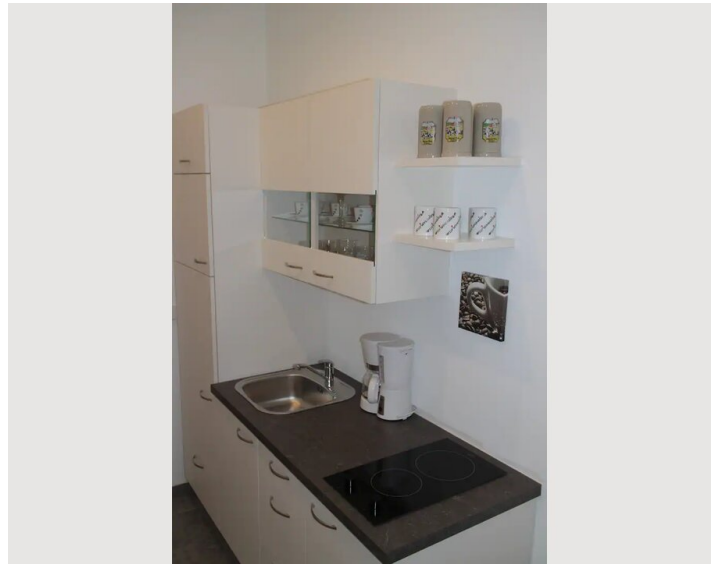
- Private kitchen
- Glasses/Tableware
- Cooking utensils
- Filter coffee

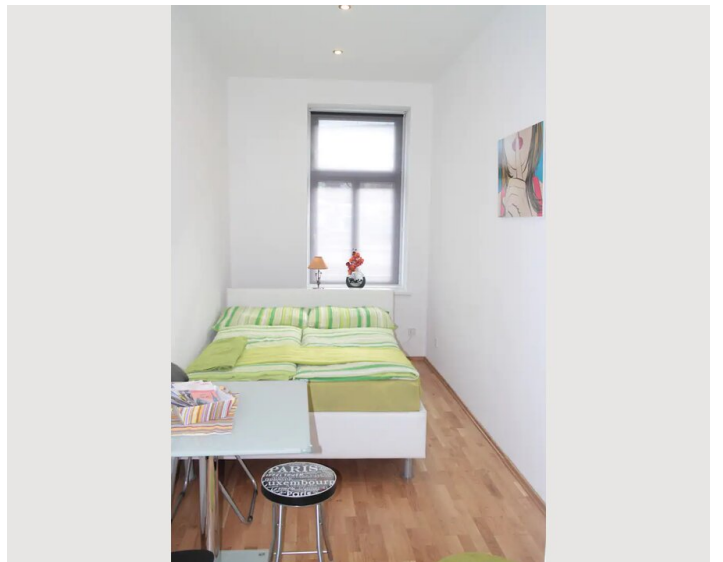
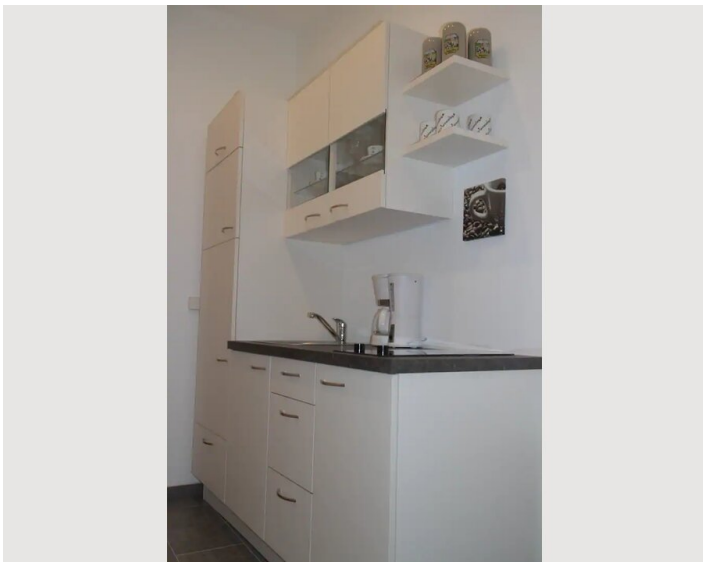
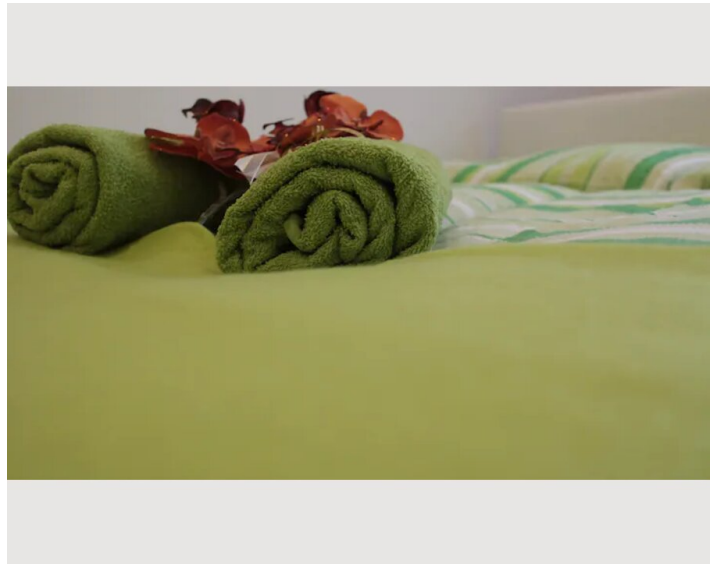
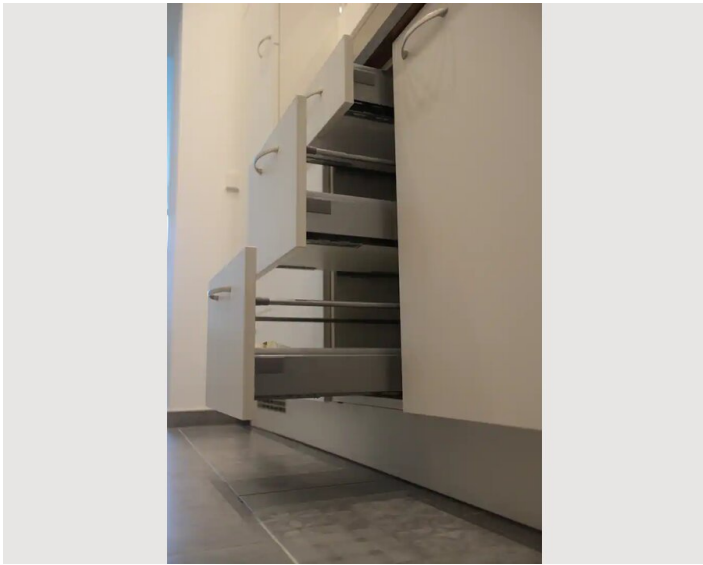
## Informations

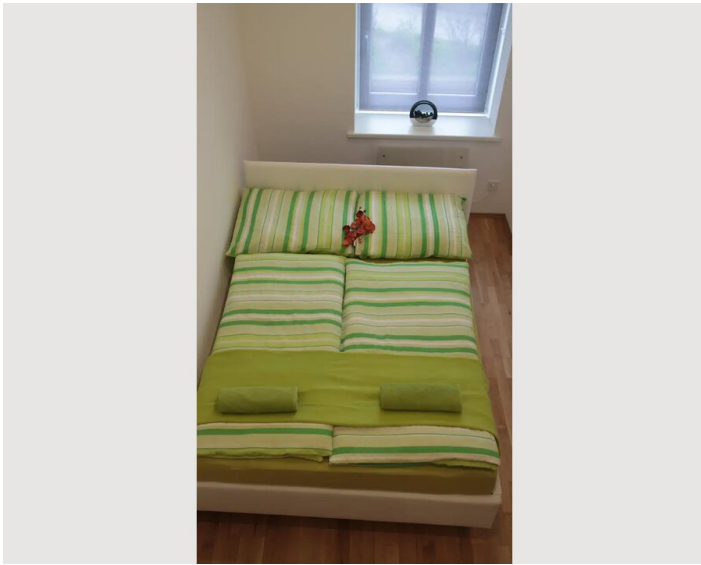
- Suitable for construction workers
- Short-term parking zone subject to a charge
- Pets forbidden
- Smoking not allowed
- Desk/Workplace
- Regular cleaning at extra cost

## Picture gallery











### Infrastructure

 Metro line U4 and bus station 2 minutes away by foot  Supermarket about 50 meters away.

Transportation options: bus and subway station U4 within 2 minutes walking distance. Subway line U6 within 5 minutes walking distance.

Supermarket about 50 meters away.

Pharmacy, restaurants, fast food, bakery, cafe, fitness center, drugstore, all within 2 minutes away.

Parking possibilities:

- > Directly in front of the building, subject to charge (ticket shop 2 minutes walk away)
- > Parking garage opposite the building

## Location

