



2 ROOM APARTMENT, 3053 BRAND LAABEN

Flat in green nature

Object number: ELWW1

[View and rent online](#)

Nice flat with view to the green mountains of the Wienerwald. Modern furniture, all necessary equipments for daily need available

Period	20/12/2025 - 20/01/2026
Number of persons	2
Total incl. VAT.	€ 1.213,55
Security deposit	€ 900,00



Living space

56m²



Maximum occupancy

2 Persons



Complete accommodation [?]

1 Private bathroom 1 Separated bedroom



1. floor



Check-in

10:00 - 13:00 Clock



Check-out

10:00 - 12:00 Clock

Sleeping options

Sleeping room



1x Double bed (2 m x 2 m)

Descripton of accommodation

Flat has its own sleeping room, bathroom with shower, including privat washing machine. Living room bright and very comfortable with view to the Schöpl (mountain), Kitchen is complete equipped, possible to cook on oven with wood fire or electric. Oven is also heating of the flat (see pictures). Heating material wood is included. In addition can the flat be heated by an electric heating with automatic steering. Sofa of living room offers possibilty for on additional sleeping place. TV/Radio with Satelite available.

Till around mid of the day sun comes into the flat, afterwards you will enjoy comfortable temperature when hot outside during rest of the day.

Special is own parking place in the cellar of the building, with dry an comfortable access to the flat.

Equipment & Features



Basic equipment

- Balcony
- Music system/docking station
- Private washing machine
- Towels
- Garage
- Iron & ironing board
- Garden sharing
- TV
- Bedclothes
- Private toilet
- Vacuum cleaner
- Cleaning utensils



Fireplace

- Tiled stove



First supply

- Toilet paper
- Nespresso capsules



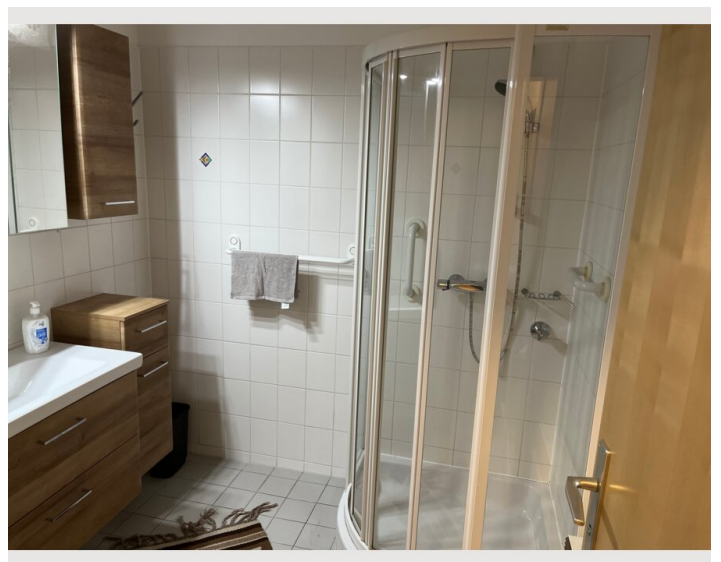
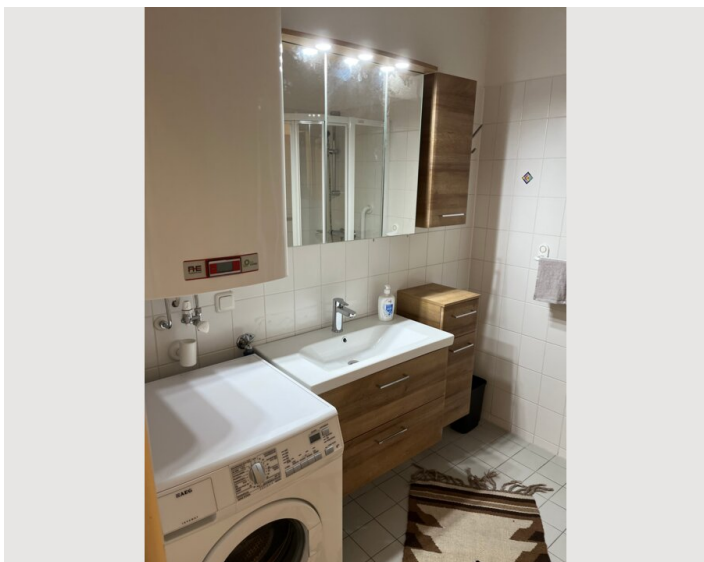
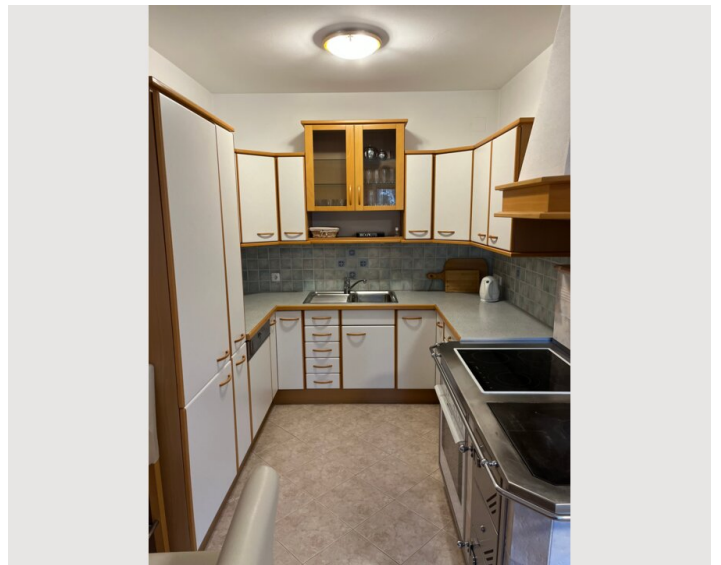
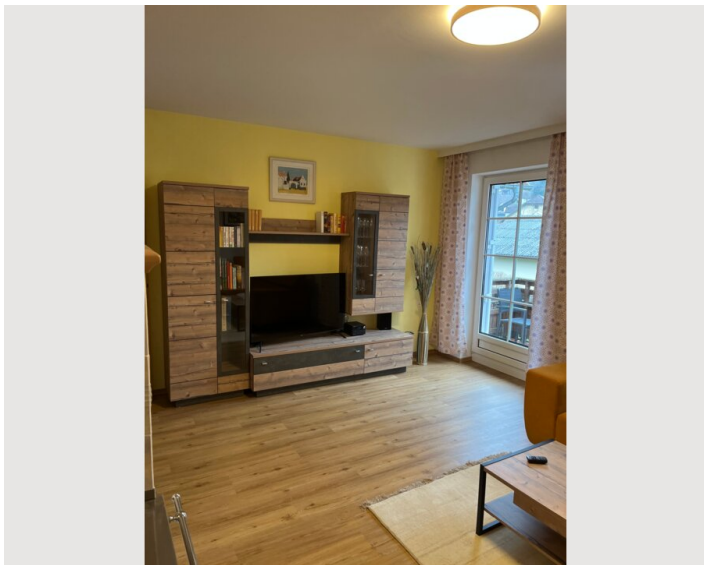
Kitchen

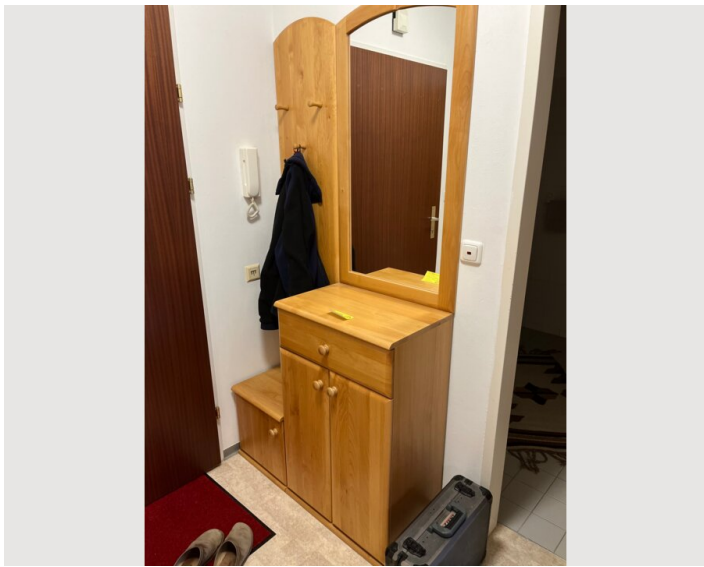
- Private kitchen
- Glasses/Tableware
- Dishwasher
- Cooking utensils
- Espresso machine
- Microwave

Informations

- Smoking not allowed
- Pets forbidden

Picture gallery





Infrastructure



direct in front of building



2 stores for daily needs in walking distance



Westbahn Neulengbach distance approx. 15 km

Cash dispenser, small stores and a restaurant nearby, easy reachable by walking

Location

