



2 ROOM APARTMENT, 1070 VIENNA

"Spittelberg" Design Apartment

Object number: BTWF1

[View and rent online](#)

Period	04/04/ - 04/05/2026
Number of persons	2
Total incl. VAT.	€ 2.212,67
Security deposit	€ 1.700,00

This designer apartment is located on the "Belle Etage" of a historic old building in the beautiful Biedermeier district of Spittelberg near the Ringstrasse, Museumsquartier and Mariahilferstrasse. The apartment is sunny and fully furnished.



Living space

88m²



Maximum occupancy

6 Persons



Complete accommodation [?]

1 Private bathroom 1 Separated bedroom 1 Living-Sleepingroom



1. floor



Check-in

13:00 - 00:00 Clock



Check-out

00:00 - 11:00 Clock

Sleeping options

Sleeping room



1x Double bed (1,80 m x 2 m)



1x Sofa bed (2 persons)

Living & Sleeping



1x Sofa bed (2 persons)

Descripton of accommodation

The historic apartment is located on the 1st floor of a traditional Viennese house and consists of spacious, 3.60m high rooms with old parquet floors, connected by double doors.

The apartment is in renovated condition and is divided into an entrance hall/living room/kitchen, a bathroom with bathtub, a separate toilet, a large living room/bedroom, and a separate bedroom.

Hot water and heating are operated via a gas central. The kitchen is fully equipped, with a gas oven, electric stove, dishwasher, refrigerator, microwave and a kitchen island. The bathroom has a bathtub, sink, washing machine and dryer. Telephone cable/telecom connection is available. All rooms are fully and fully furnished and furnished. Highspeed Internet and Smart TV are available.

If desired, a bicycle storage area in the inner courtyard and a cellar compartment are also available.

Equipment & Features



Basic equipment

- Internet/Wifi
- Private washing machine
- Bedclothes
- Private toilet
- Iron & ironing board
- Hairdryer
- TV
- Private dryer
- Towels
- Vacuum cleaner
- Cleaning utensils



First supply

- Toilet paper
- Soap
- Fridge filling on request
- shampoo
- Nespresso capsules



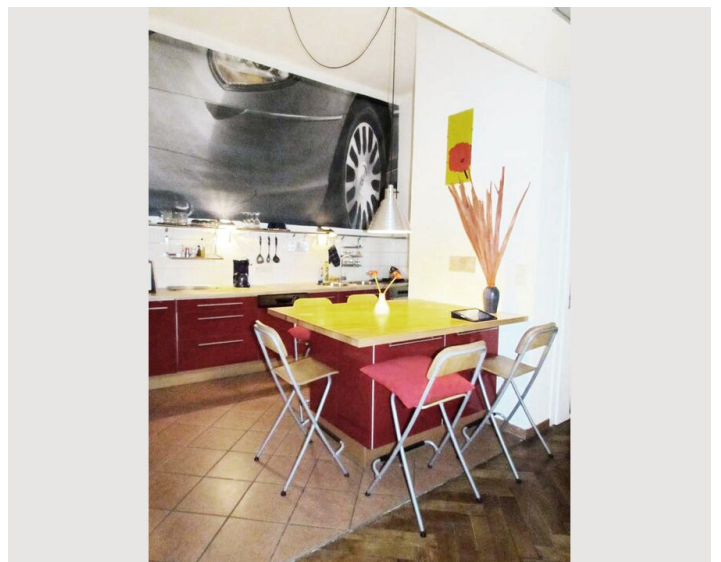
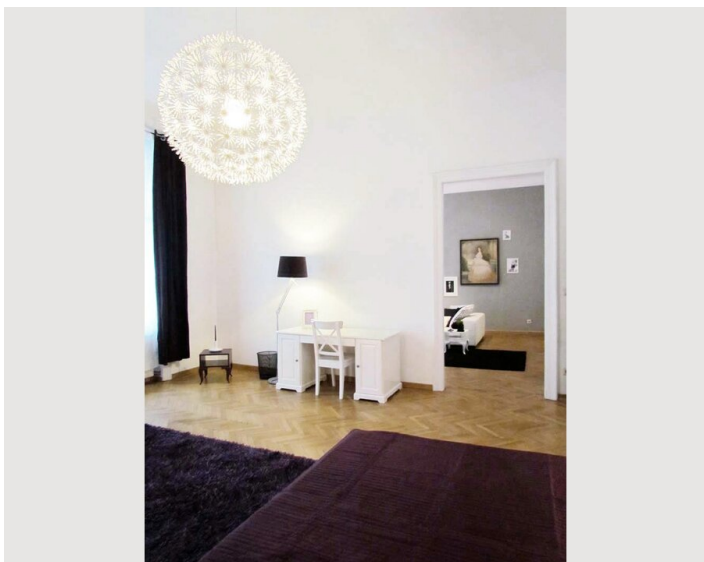
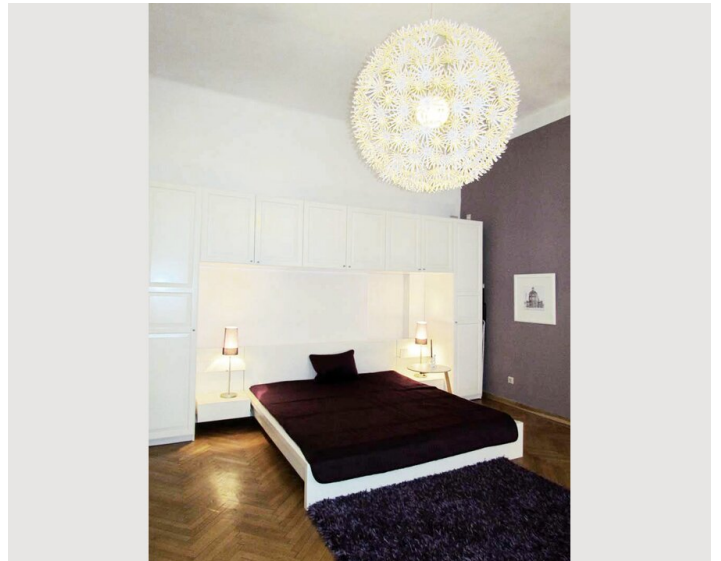
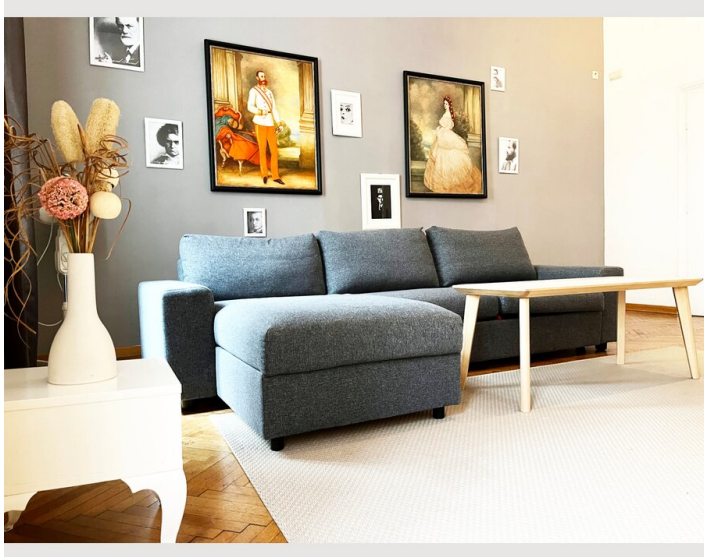
Kitchen

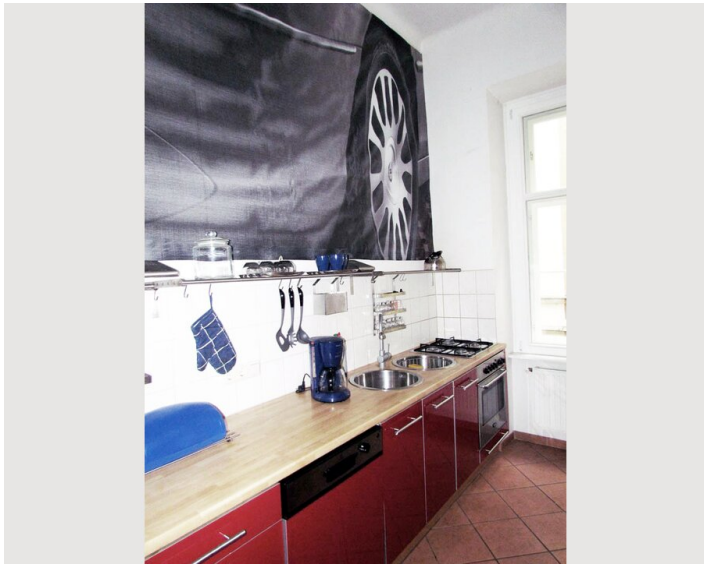
- Private kitchen
- Glasses/Tableware
- Filter coffee
- Microwave
- Cooking utensils
- Espresso machine
- Dishwasher

Informations

- Suitable for children
- Short-term parking zone subject to a charge
- Pets forbidden
- Bicycle room free of charge
- Smoking not allowed
- Desk/Workplace
- Regular cleaning at extra cost

Picture gallery





Infrastructure

- 🕒 Ringstrasse, 2min walk
- 🕒 Museumsquartier, 2min walk
- 🚊 Tram 49, station Stiftgasse, in front of house
- 🚇 Subway U3, station Volkstheater, 3min walk
- 🚇 around 40min by subway U3 via station Wien Mitte and S7 to airport
- 🚇 Mariahilferstrasse, 2min walk

The apartment is located in the middle of the lively, historic Spittelberg district, near the corner of Siebensterngasse and Spittelberggasse.

Numerous cafes, restaurants, shopping opportunities and cultural institutions are within a short walking distance. The famous Spittelberg winter Christmas market is right in front of the house.

The tram stop 49 and the subway stations U3/U2 Volkstheater and Neubaugasse are in the immediate vicinity.

The pedestrian zone Mariahilferstrasse, the Museum Quarter or the Ringstrasse can be reached on foot in just a few minutes.

Location

