



3 ROOM APARTMENT, 5020 SALZBURG

Living at the Fondachhof - Fantastic top-floor flat in a historic building - Salzburg Parsch

Object number: SISSI II

[View and rent online](#)

The beautiful studio apartment is located in the middle of the popular district "Parsch". Surrounded by green spaces, the rooftop apartment is located in the "Fondachhof area" with only a few parties. You can therefore enjoy absolute privacy.

Period	31/01/ - 03/03/2026
Number of persons	2
Total incl. VAT.	€ 4.453,74
Security deposit	€ 3.400,00



Living space

131m²



Maximum occupancy

4 Persons



Complete accommodation [?]

1 Private bathroom 2 Separated bedrooms



3. floor

Elevator available



Check-in

14:00 - 17:00 Clock



Check-out

10:00 - 12:00 Clock

Sleeping options

Sleeping room



1x Double bed (1,80 m x 2 m)



1x Sofa bed (2 persons)

Descripton of accommodation

You would like to stay in a very central location but still in a beautiful property? We have the ideal apartment for you! The lovingly and newly furnished apartment is located in the heart of the very popular district "Parsch" and is part of the noble "Fondachhof area".

Surrounded by a beautiful park and a beautiful view of the Salzburg mountains, you can enjoy your time in the chic rooftop apartment.

The bus station is within walking distance of the apartment and a parking space is for a monthly fee (96 € incl. VAT) also available.

Equipment & Features



Basic equipment

- Internet/Wifi
- Community washing machine
- Towels
- Vacuum cleaner
- Hairdryer
- TV
- Bedclothes
- Private toilet
- Iron & ironing board



First supply

- Toilet paper



Kitchen

- Private kitchen
- Glasses/Tableware
- Dishwasher
- Cooking utensils
- Espresso machine

Informations

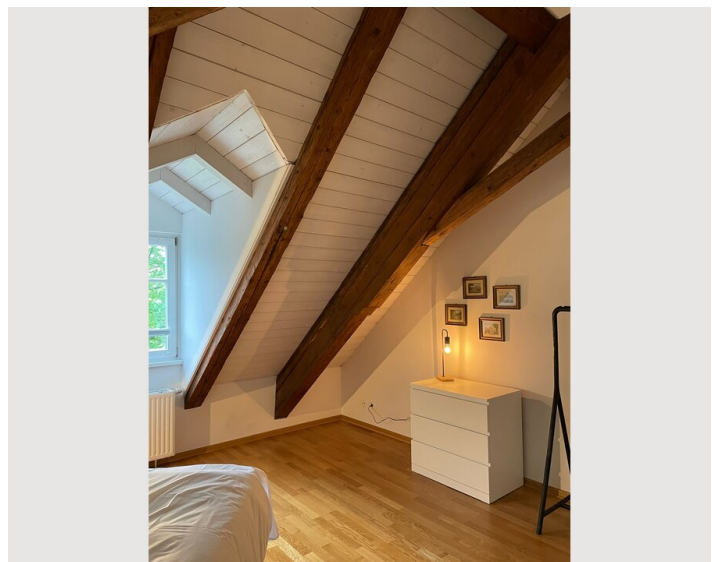
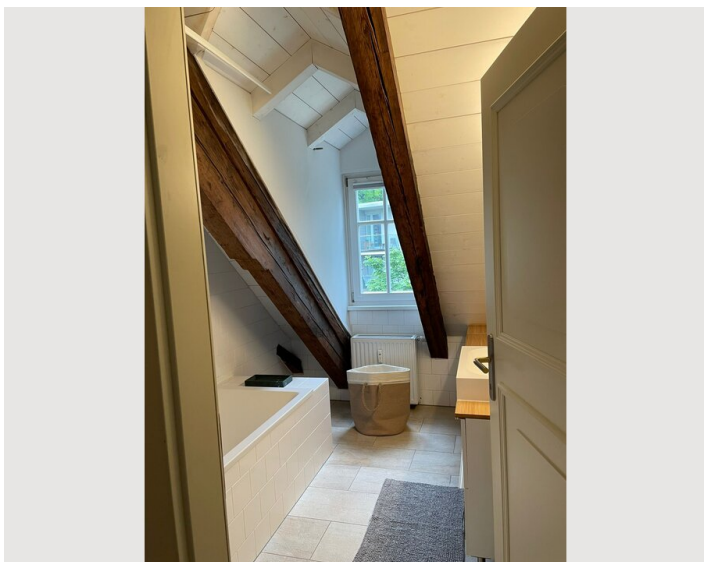
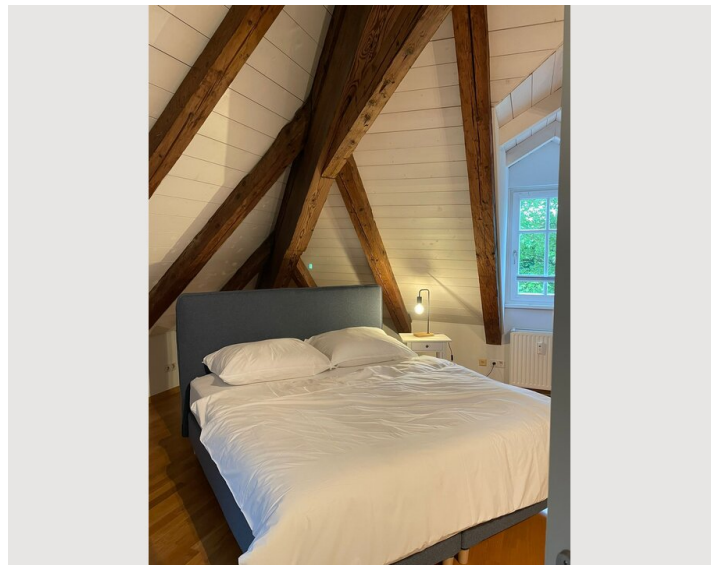
- Smoking not allowed
- Pets forbidden
- Free short-term parking zone

Additional services

- parking space (€ 96,00)

All prices are gross per month - billing is done directly with the lessor.

Picture gallery





A map of the town of Parsch, Austria. A green circular icon with a white clock face is positioned in the center of the map. The map shows a network of streets, including Gaisbergstraße, Traktstraße, Richard-Strele-Straße, and others. A large green area labeled 'Preuschenpark' is visible in the lower-left quadrant. To the right of the park, there is a building labeled 'Volksschule Abfalter'. The town name 'PARSCH' is written in large, bold, black letters in the center. The map is credited to 'mapbox' in the bottom-left corner and '© Mapbox © OpenStreetMap' in the bottom-right corner.