



2 ROOM APARTMENT, 1020 VIENNA

## Cosy, centrally located flat for 1-2 people

Object number: JDED1

[View and rent online](#)

Centrally located 42m<sup>2</sup> flat with large living room/bedroom and own wardrobe room.

<b>Period</b>	16/04/ - 16/05/2026
<b>Number of persons</b>	2
<b>Total incl. VAT.</b>	€ 1.373,68
<b>Security deposit</b>	€ 1.100,00



### Living space

42m<sup>2</sup>



### Maximum occupancy

2 Persons



### Complete accommodation <sup>?</sup>

1 Private bathroom 1 Living-Sleepingroom



### 1. floor

Elevator available



### Check-in

21:31 - 22:00 Clock



### Check-out

08:00 - 15:00 Clock

## Sleeping options

### Living & Sleeping



1x Double bed (1,40 m x 2 m)

## Descripton of accommodation

Scholzgasse is only about 500m from the 1st district, U4 in 300m distance, U2 in 500m.

The flat is on the 1st floor. The entrance area also has a fully equipped kitchen with induction hob, dishwasher and washing machine. Off this is the approx. 6m<sup>2</sup> wardrobe room (where you will also find an ironing board, iron and clothes horse), as well as the high-quality, new bathroom with underfloor heating. In the large living room/bedroom (approx. 22m<sup>2</sup>) you will find a seating area, a double bed and a table that can be used as a desk or dining table. There is a matching office chair or 4 Thonet chairs. There is a small bistro table for meals alone or as a couple.

Translated with DeepL.com (free version)

## Equipment & Features



### Basic equipment

- Internet/Wifi
- Bedclothes
- Private toilet
- Iron & ironing board
- Hairdryer
- Private washing machine
- Towels
- Vacuum cleaner
- Cleaning utensils



### First supply

- Toilet paper



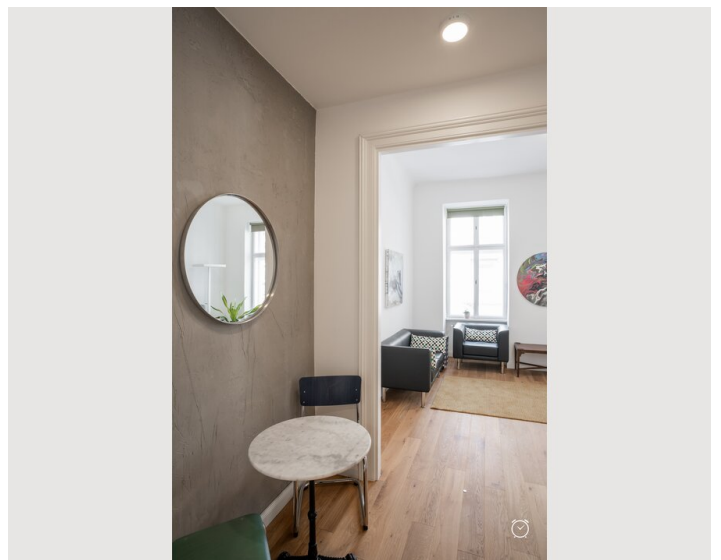
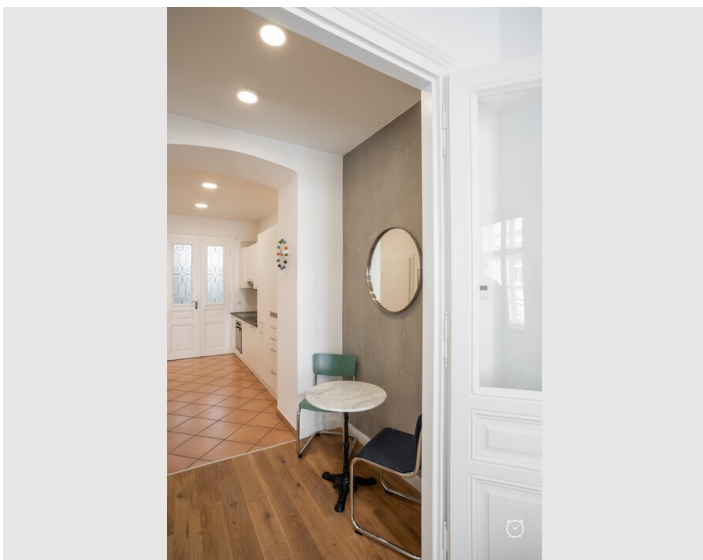
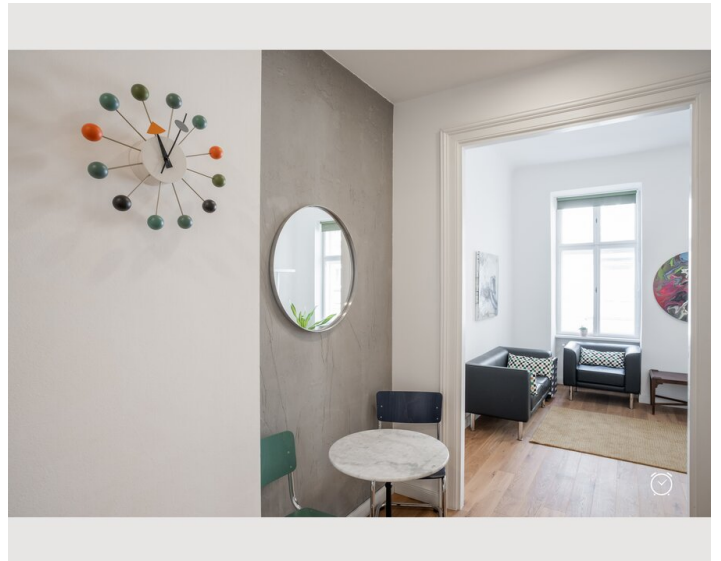
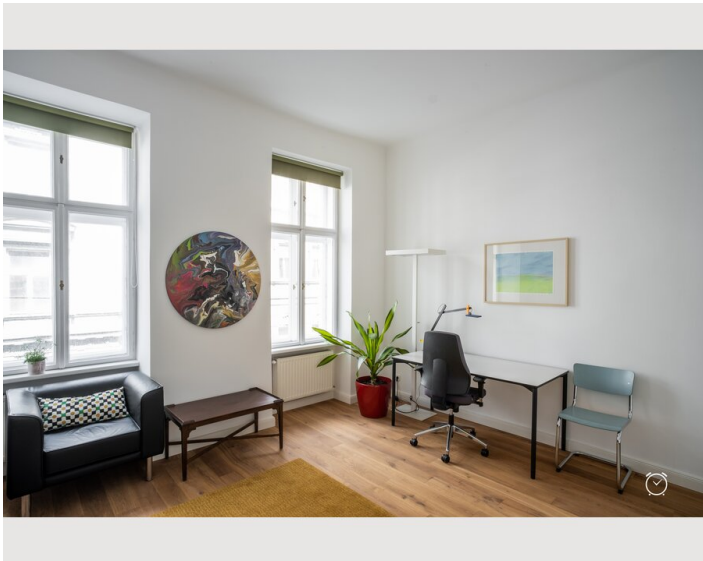
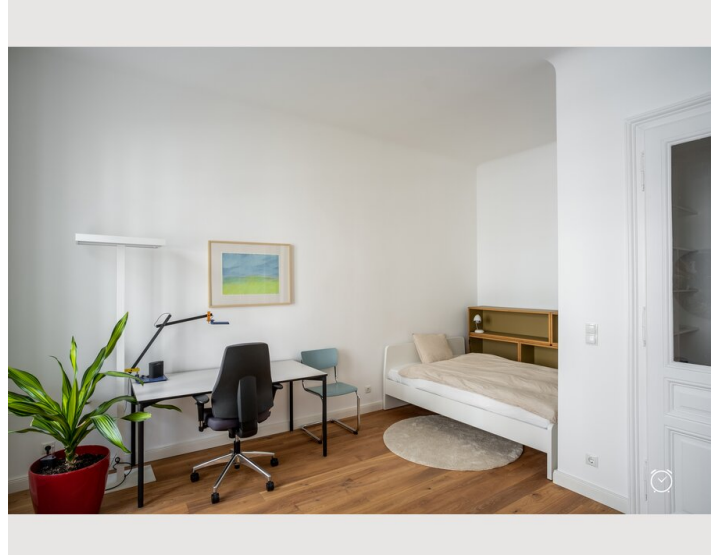
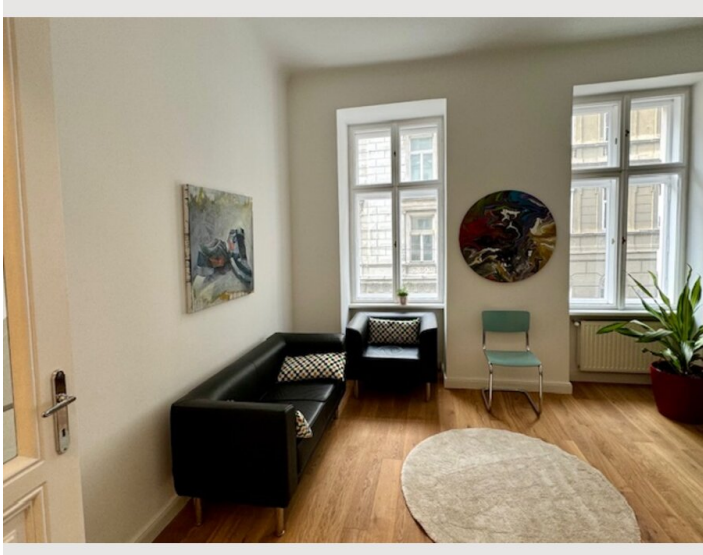
### Kitchen

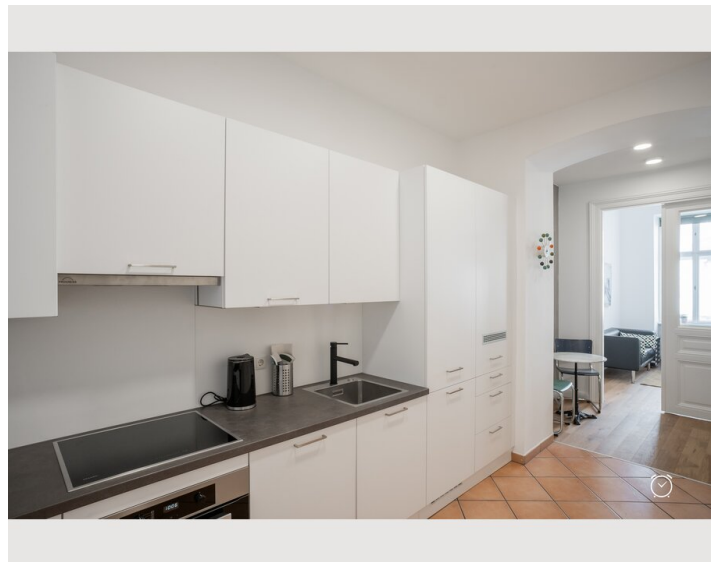
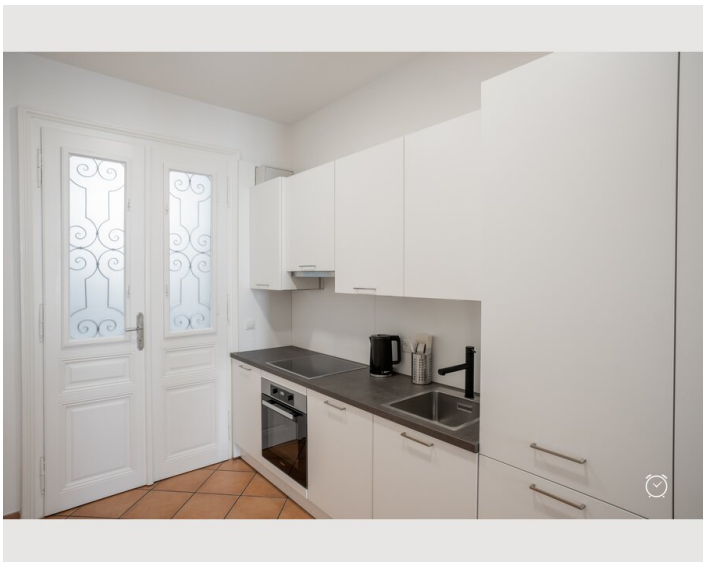
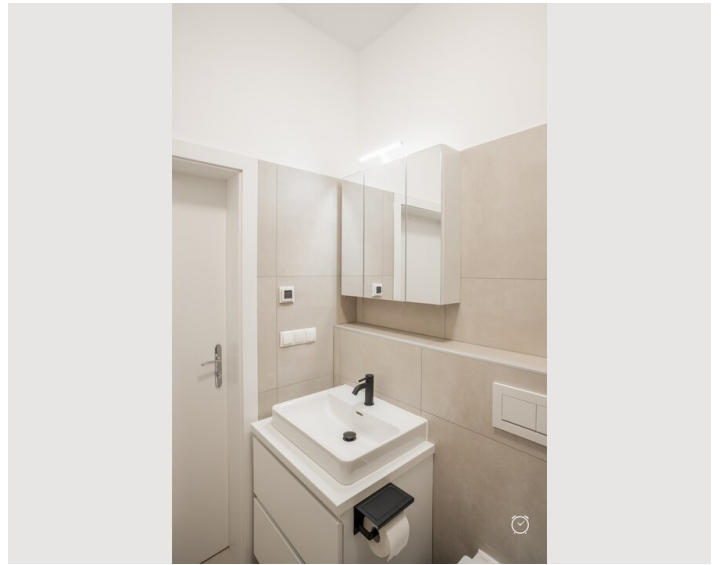
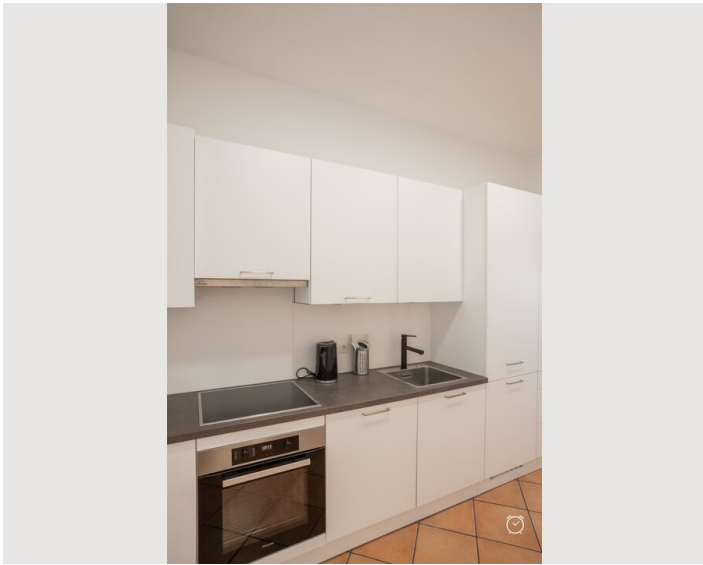
- Private kitchen
- Glasses/Tableware
- Filter coffee
- Cooking utensils
- Espresso machine
- Dishwasher

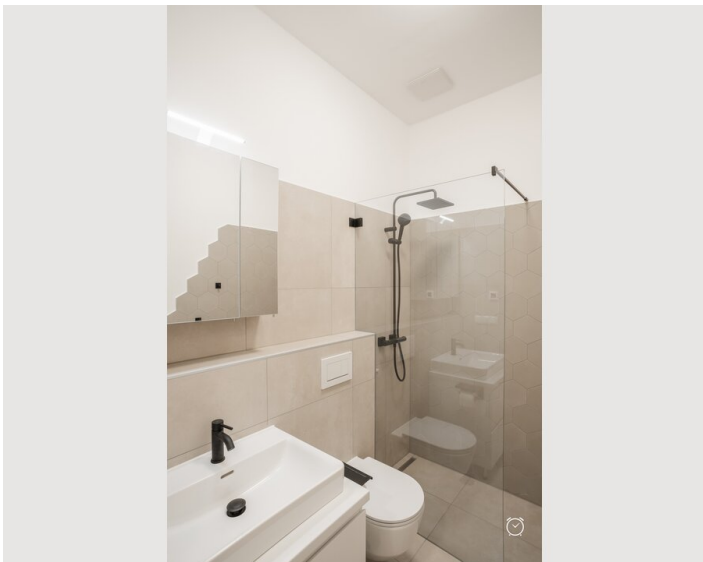
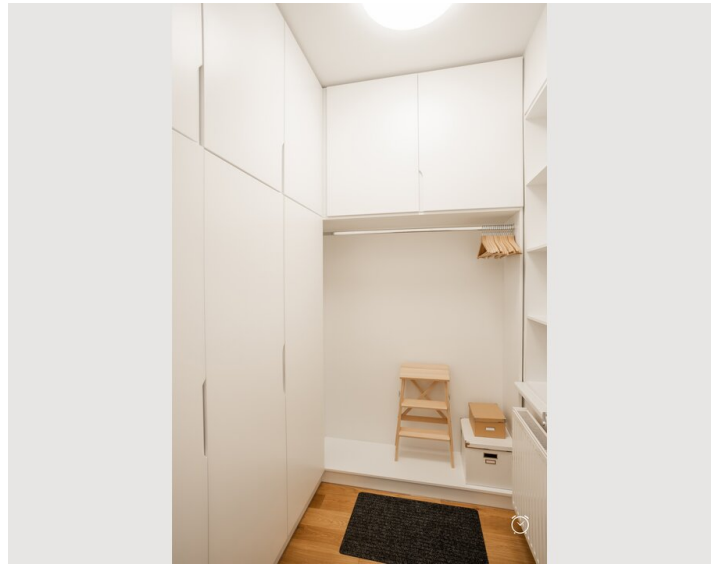
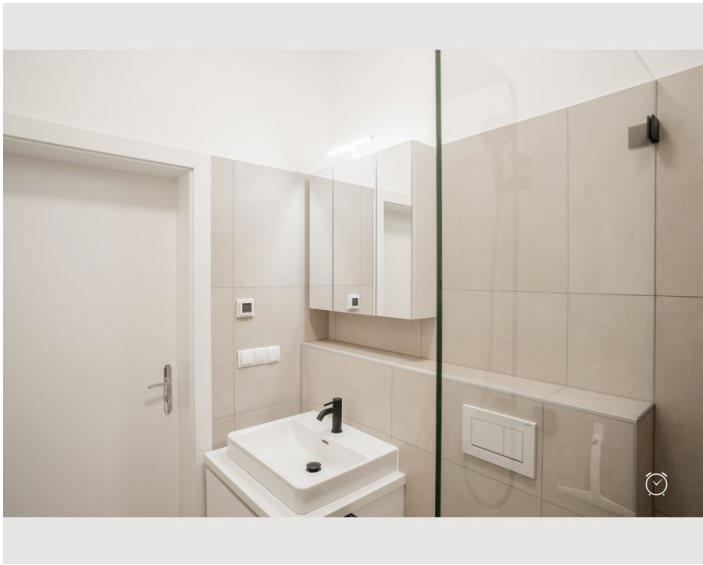
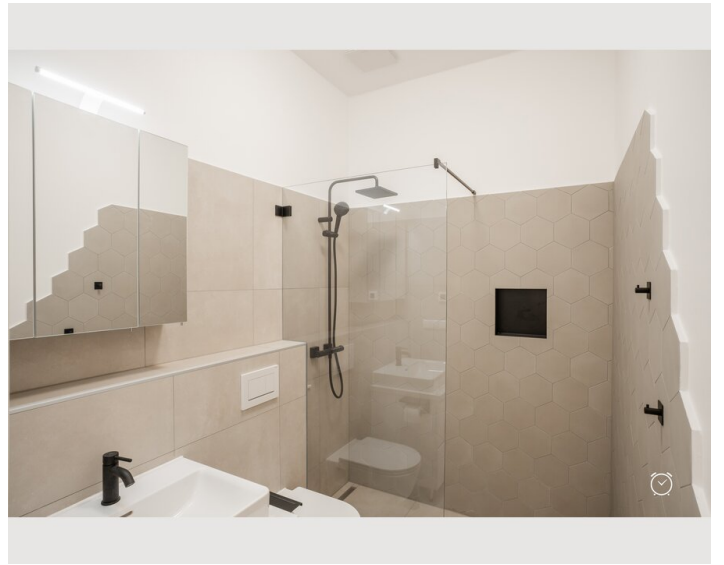
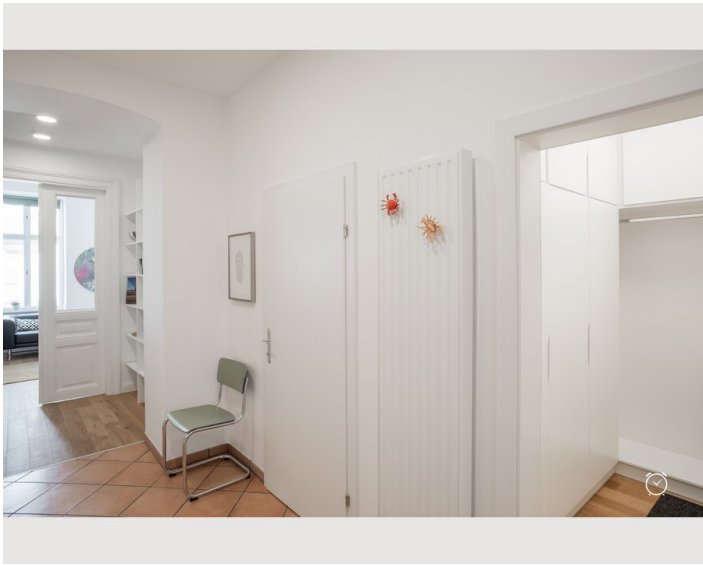
## Informations

- Smoking not allowed
- Desk/Workplace
- Regular cleaning at extra cost
- Short-term parking zone subject to a charge
- Pets forbidden
- Bicycle room free of charge

## Picture gallery

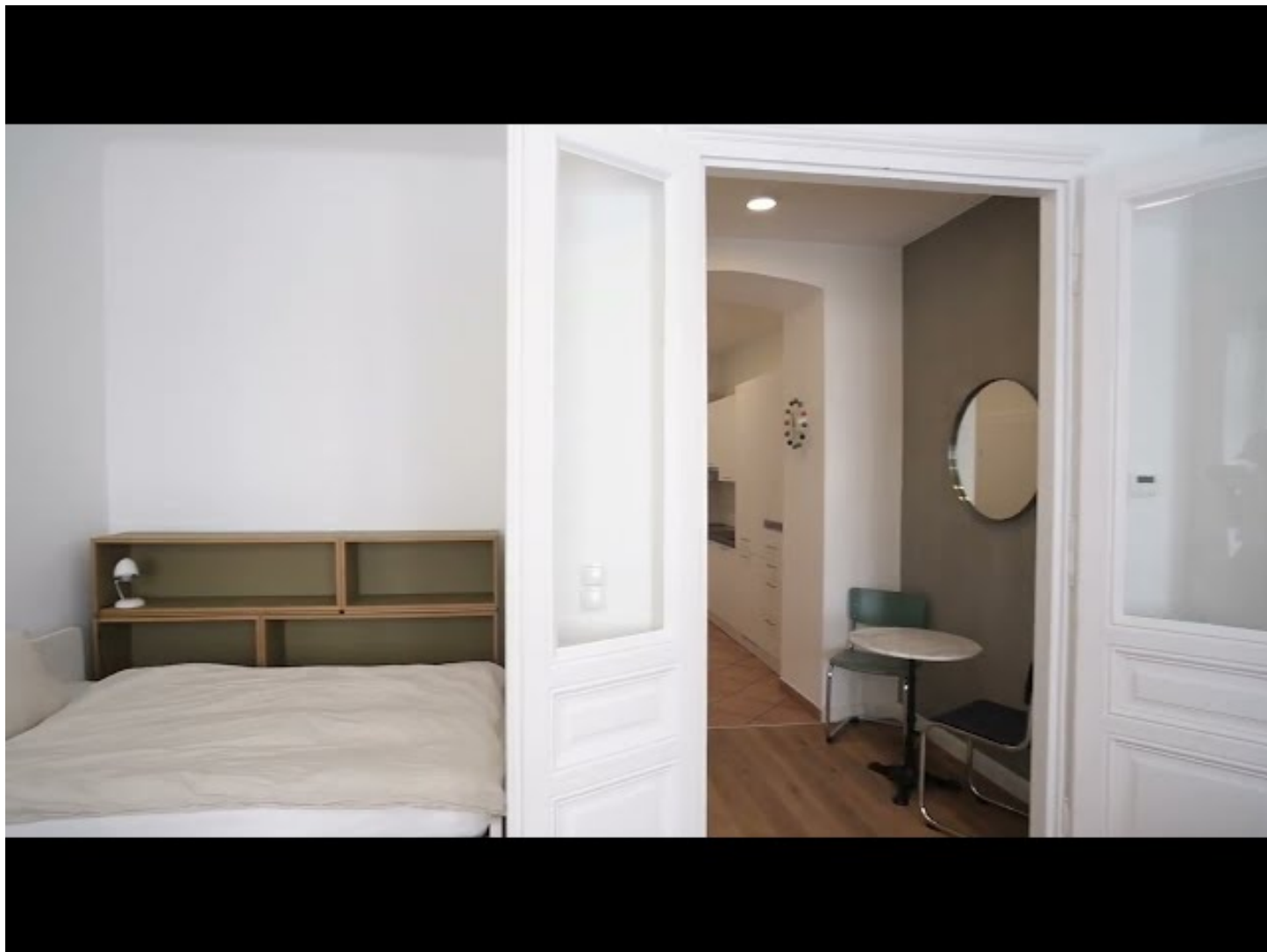







## Video


Goto Video




### Infrastructure

 U4 Rossauer Laende, 300m walking distance

 500m walking distance

 U2 Schottenring, 500m walking distance

 Airport Train to Landstraße, then 3 Stops with U4

---

Supermarkt approx 400m

## Location

