



3 ROOM APARTMENT, 1090 VIENNA

Bright 3 Room Apartment 90m² in a traditional building from 1903.

Object number: 213

[View and rent online](#)

Period	19/08/ - 19/09/2025
Number of persons	2
Total incl. VAT.	€ 2.478,71
Security deposit	€ 1.900,00

Bright 3 room apartment in a traditional building from 1903.



Living space

90m²



Maximum occupancy

6 Persons



Complete accommodation [?]

1 private bathroom 1 Separated bedroom 2 Shared bedrooms



2. floor



Check-in

14:00 - 23:59 Clock



Check-out

00:01 - 11:00 Clock

Sleeping options

Sleeping room



1x Double bed (1,40 m x 2 m)

Living and sleeping 1



1x Double bed (1,40 m x 2 m)



2x Single bed

Living and sleeping 2



1x Sofa bed (2 persons)

Descripton of accommodation

The apartment is on the 2nd floor and has one separate bedroom as well as two kind of living/bedrooms for a total of 6 people. Of course, there is also a bathroom and a toilet for private and sole use.

Since the Währinger Gürtel is one of Vienna's main traffic arteries, passing traffic causes some noise, but you benefit from great transport connections.

The apartment is completely private so you have access to all areas.

Equipment & Features



Basic equipment

- Internet/Wifi
- Bedclothes
- Private toilet
- Iron & ironing board
- Hairdryer
- Private washing machine
- Towels
- Vacuum cleaner
- Cleaning utensils



First supply

- Toilet paper
- Soap
- shampoo



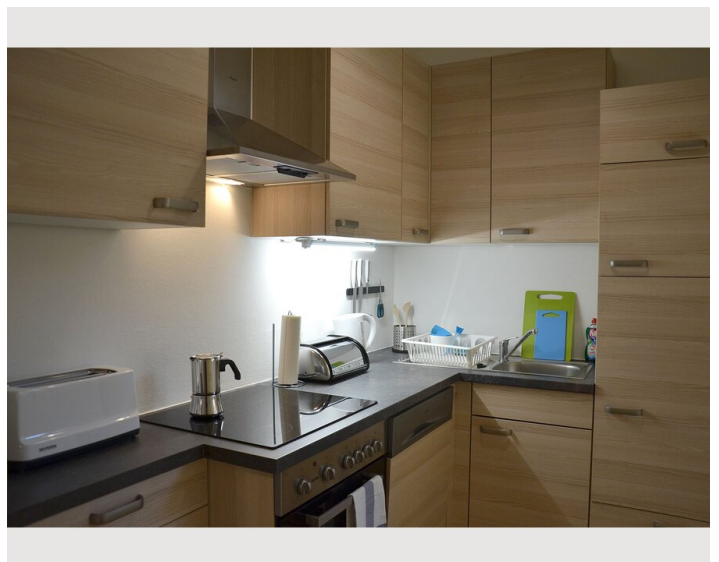
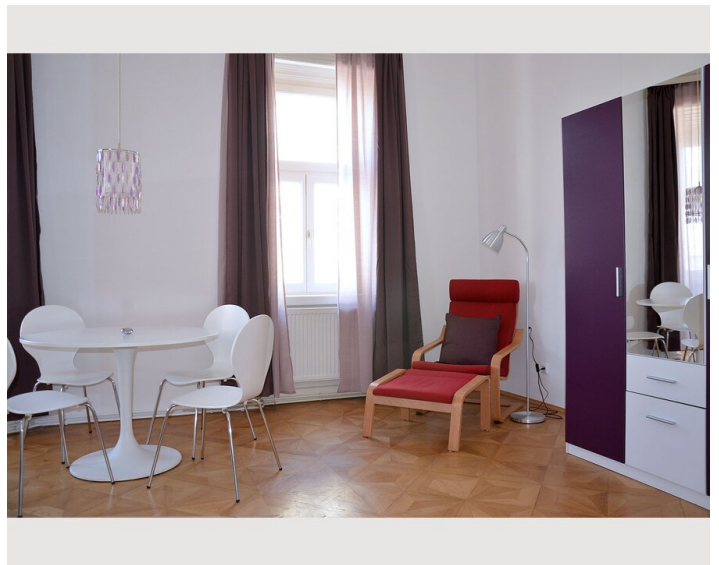
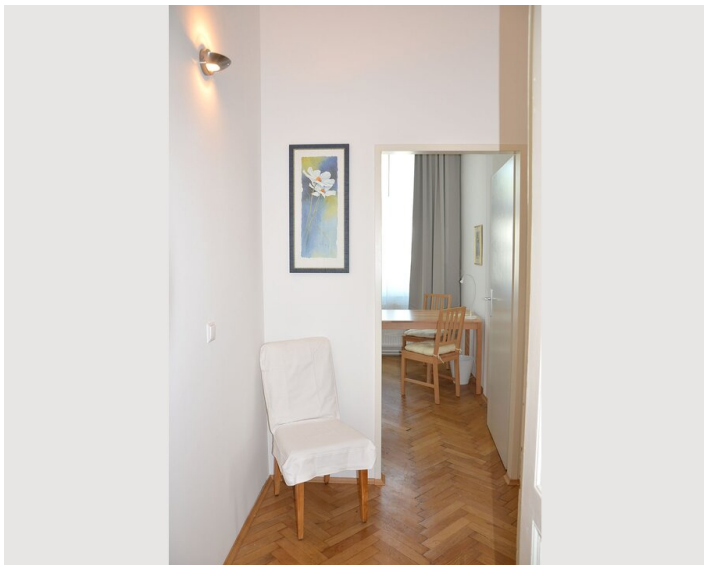
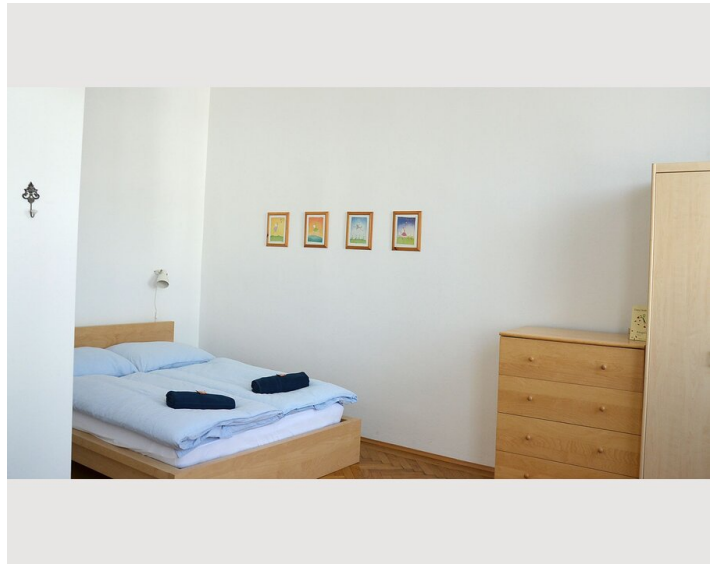
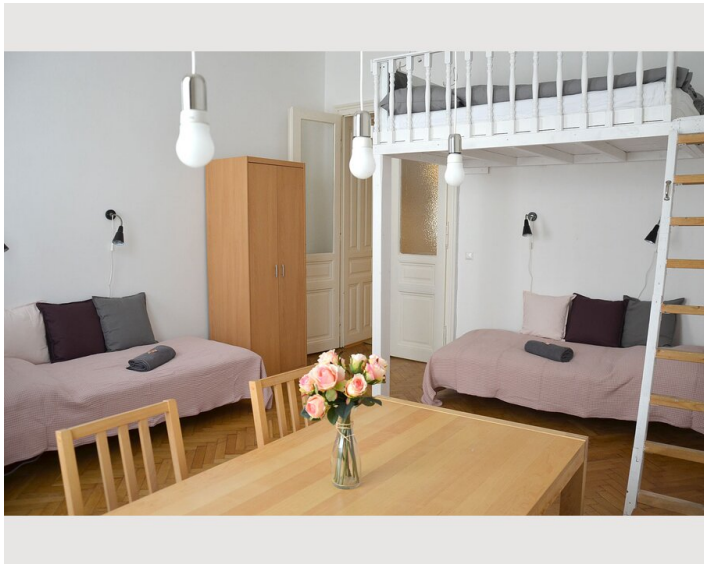
Kitchen

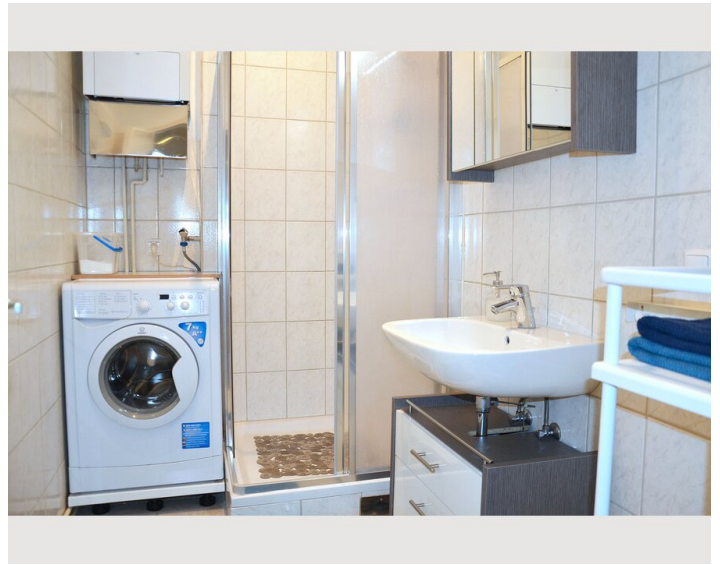
- Private kitchen
- Glasses/Tableware
- Cooking utensils
- Coffee machine

Informations



- Suitable for children
- Short-term parking zone subject to a charge
- Pets on request
- Smoking not allowed
- Desk/Workplace
- Regular cleaning at extra cost

Picture gallery





Infrastructure

 Underground Line 6 and Tram 40/41/42 vis-à-vis  10min by tram

 vis-à-vis

Situated across the street is the underground (line U6) and tram station (line 40, 41 and 42), a supermarket as well as a bakery, a city-bike station is found around the corner. Cosy cafés and restaurants within walking distance and you can reach the city centre within 10 minutes.

Location

