

STUDIO APARTMENT, 1050 VIENNA

## Little pearl in the city center

Object number: GRÜS2

[View and rent online](#)

<b>Period</b>	14/07/ - 14/08/2025
<b>Number of persons</b>	2
<b>Total</b> incl. VAT.	€ 1.925,50
Security deposit	€ 1.400,00

Charming designer apartment in an ideal location: State Opera in 20 min. on foot or subway U1 Südtirolerplatz. Stylishly furnished, optimally utilized space.



### Living space

30m<sup>2</sup>



### Maximum occupancy

3 Persons



### Complete accommodation <sup>?</sup>

1 private bathroom 1 Living-Sleepingroom



### Ground floor



### Check-in

15:00 - 00:00 Clock



### Check-out

01:00 - 11:00 Clock

## Sleeping options

### Living and sleeping



2x Double bed (1,80 m x 2 m)



1x Sofa bed (1 person)

## Description of accommodation

Welcome to this charming apartment, perfect for long-term tenants!

The 30m<sup>2</sup> are optimally utilized:

A fully equipped kitchen with washing machine and dining area in the hallway offer convenience.

The main living space is spread over two floors: downstairs a cozy sofa, Netflix, a large closet and a desk; Upstairs a cozy sleeping area.

Highlights:

- High-speed internet
- bed linen
- Towels
- Washing machine
- Hairdryer
- Work area for maximum comfort

## Equipment & Features



### Basic equipment

- Internet/Wifi
- Private washing machine
- Towels
- Hairdryer
- TV
- Bedclothes
- Private toilet



### First supply

- Toilet paper
- Nespresso capsules
- Soap



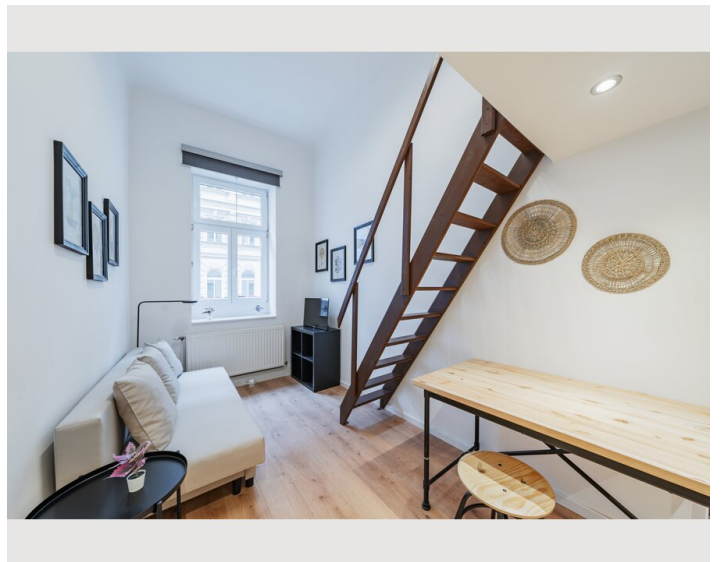
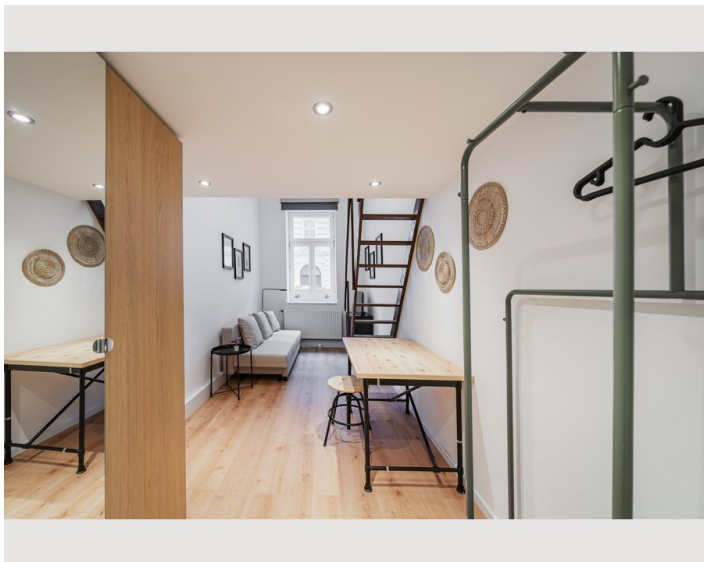
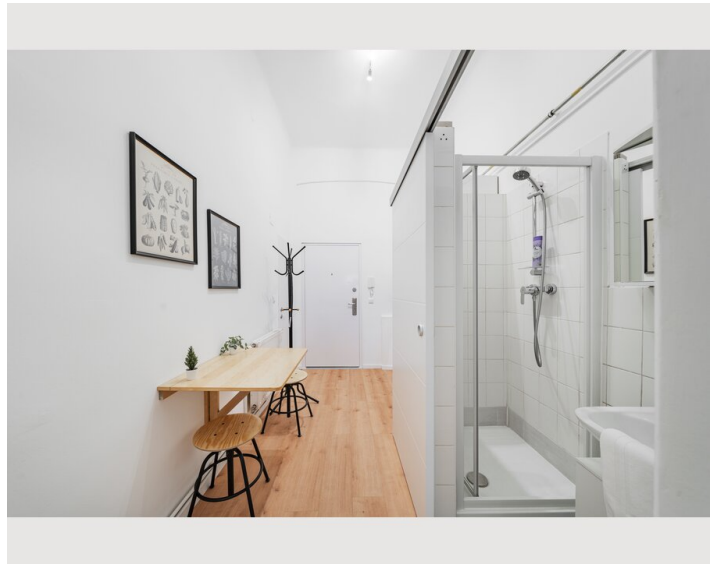
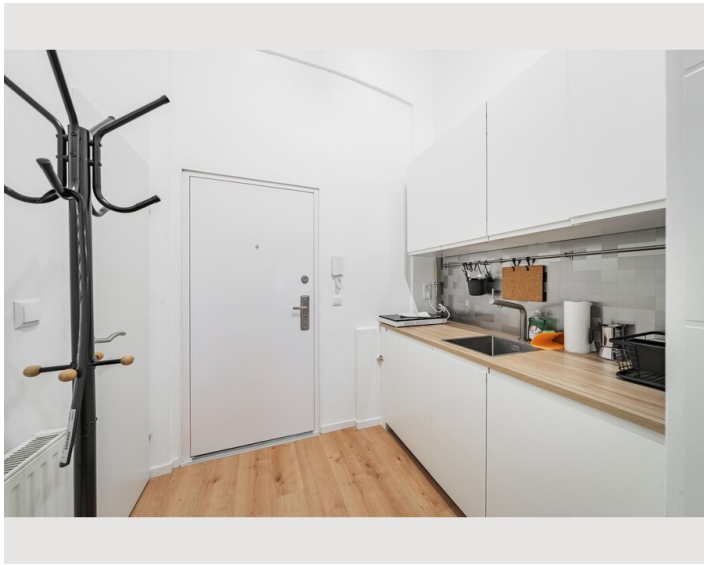
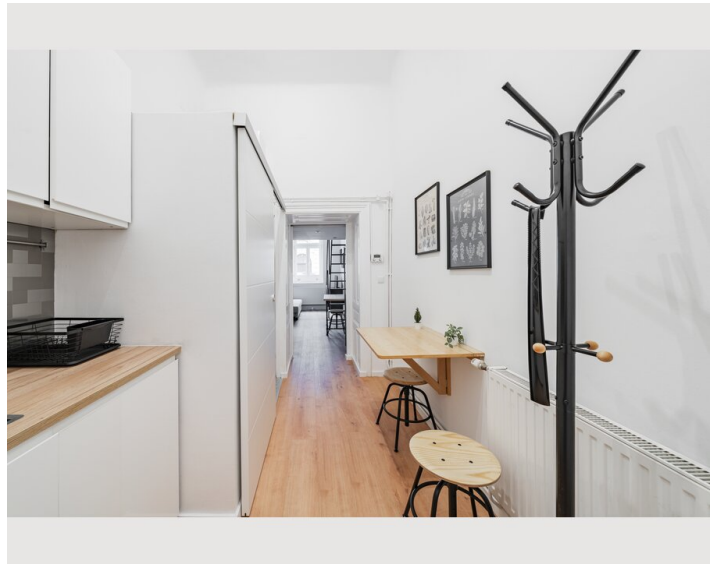
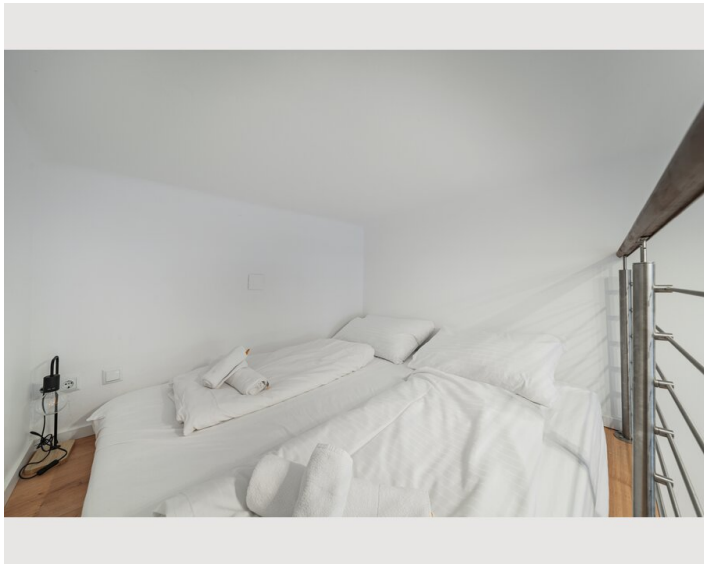
### Kitchen

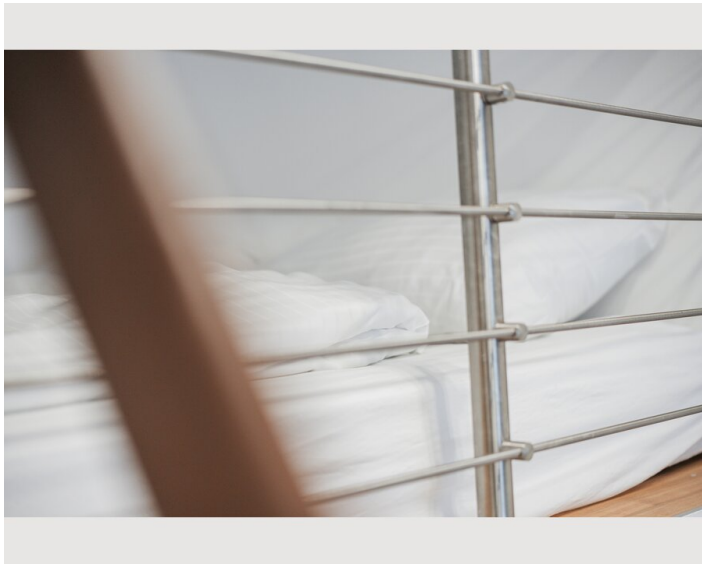
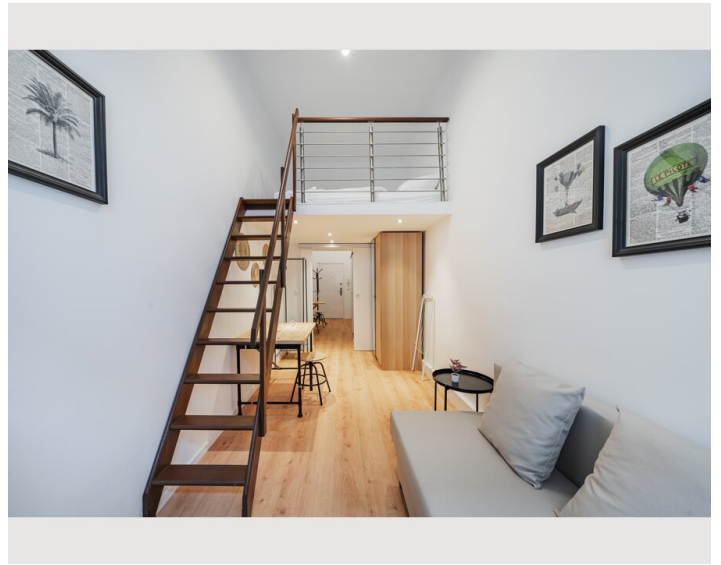
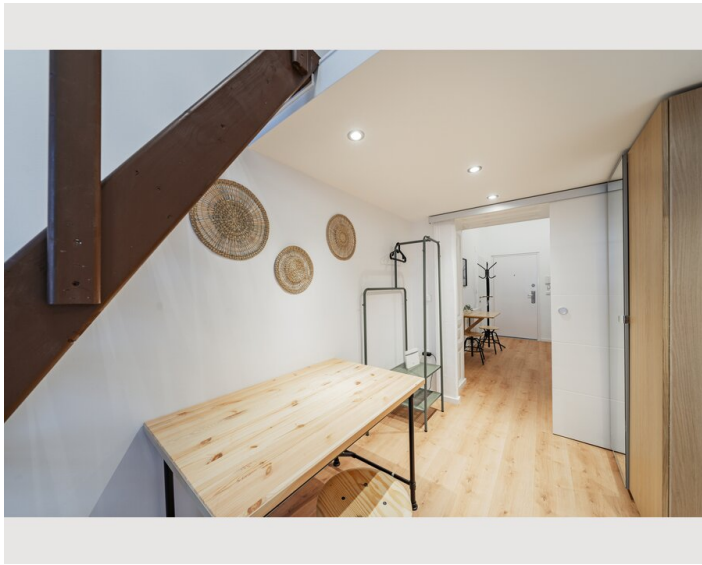
- Private kitchen
- Glasses/Tableware
- Cooking utensils
- Espresso machine

## Informations

- Suitable for construction workers
- Smoking not allowed
- Pets forbidden
- Bicycle room free of charge
- Suitable for children
- Short-term parking zone subject to a charge
- Regular cleaning at extra cost


## Picture gallery





### Infrastructure

© 20 minutes walk

 Wien HBF - 15 minutes walk

The charming apartment offers an excellent infrastructure. There are stores, restaurants and cafés in the immediate vicinity. Public transportation such as the Kettenbrückengasse and Pilgramgasse subway stations are within easy walking distance, making it easy to explore the city. Supermarkets, pharmacies and other daily amenities are also available nearby, making life in this neighborhood extremely convenient.



## Location

