



STUDIO APARTMENT, 5660 TAXENBACH

## Tiny home Hermine

Object number: ROBW2

[View and rent online](#)

<b>Period</b>	21/07/ - 21/08/2025
<b>Number of persons</b>	2
<b>Total</b> incl. VAT.	€ 2.379,10
Security deposit	€ 1.700,00

Experience the perfect blend of nature and comfort in our modern Tiny House, nestled in Salzburg's majestic mountain scenery. Ideal for tranquil work and relaxation in the green garden.



### Living space

35m<sup>2</sup>



### Maximum occupancy

2 Persons



### Complete accommodation <sup>?</sup>

1 private bathroom 1 Living-Sleepingroom



### Ground floor



### Check-in

14:00 - 23:00 Clock



### Check-out

06:00 - 10:00 Clock

## Sleeping options

### Living and sleeping



1x Double bed (2 m x 2 m)



1x Sofa bed (2 persons)

## Descripton of accommodation

Experience the unique fusion of nature and comfort in our modern Tiny House, surrounded by the breathtaking beauty of the Salzburg mountain landscape. With stylish interior design and a spacious garden, it provides the ideal environment for productive work and pure relaxation. Immerse yourself in the tranquility and serenity of this idyllic retreat while working amidst the greenery and enjoying the majestic scenery.

## Equipment & Features



### Basic equipment

- Terrace
- Internet/Wifi
- Bedclothes
- Private toilet
- Vacuum cleaner
- Hairdryer
- Garden
- Music system/docking station
- Towels
- Private parking space
- Cleaning utensils



### Fireplace

- Sweden Stove



### First supply

- Toilet paper
- Fridge filling on request



### Kitchen

- Private kitchen
- Glasses/Tableware
- Dishwasher
- Cooking utensils
- Espresso machine

## Informations

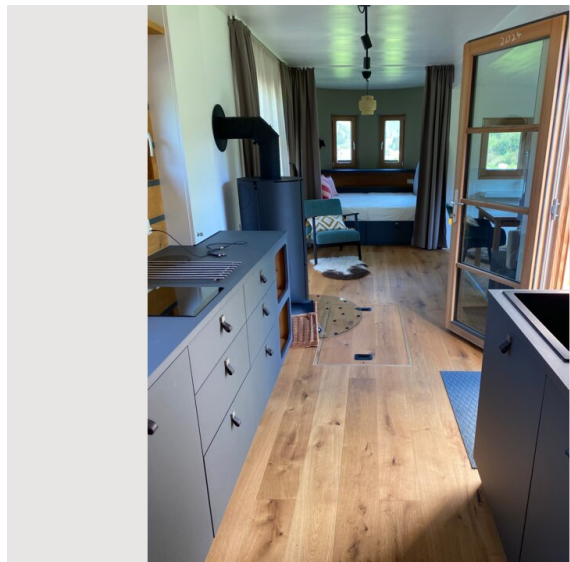
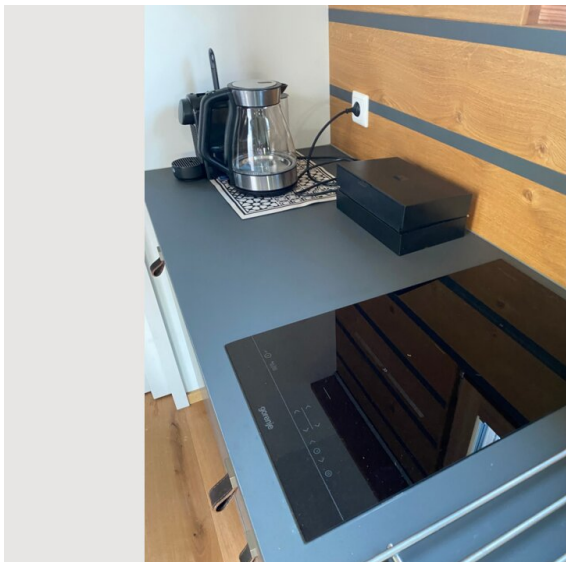
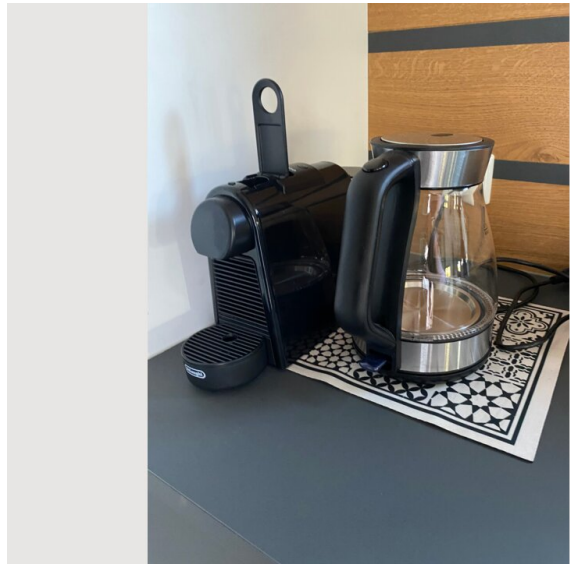
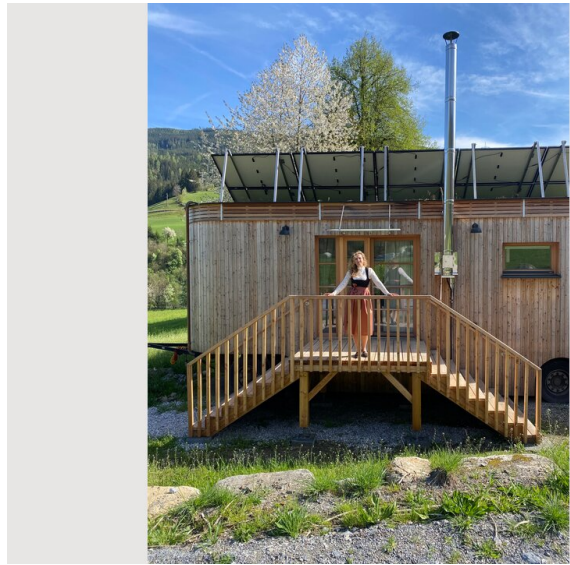
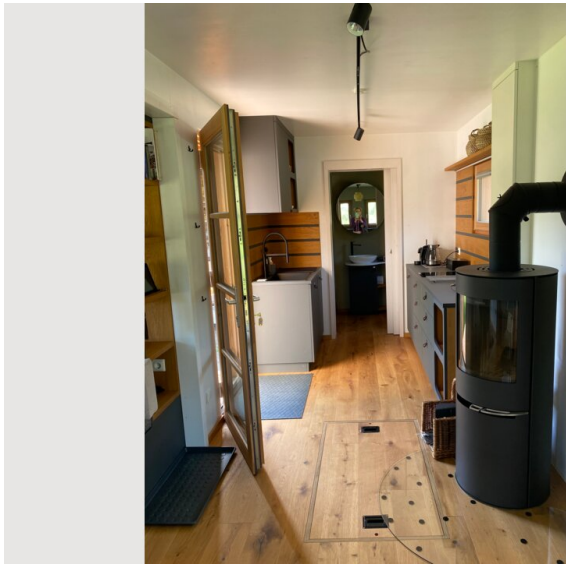
- Smoking not allowed
- Pets forbidden
- Bicycle room free of charge
- Private entrance
- Regular cleaning at extra cost

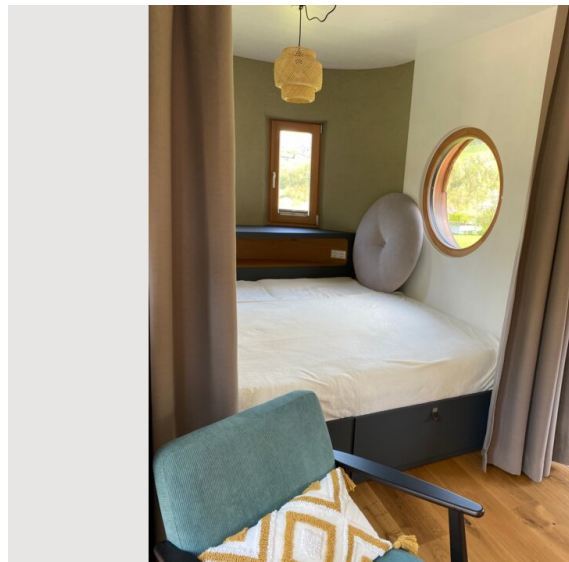
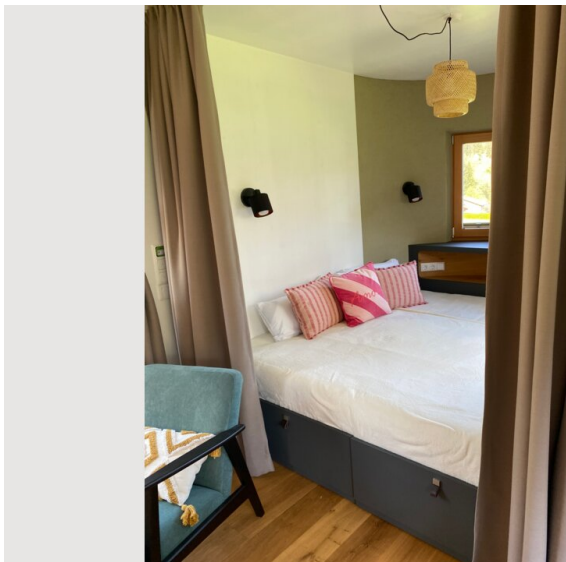
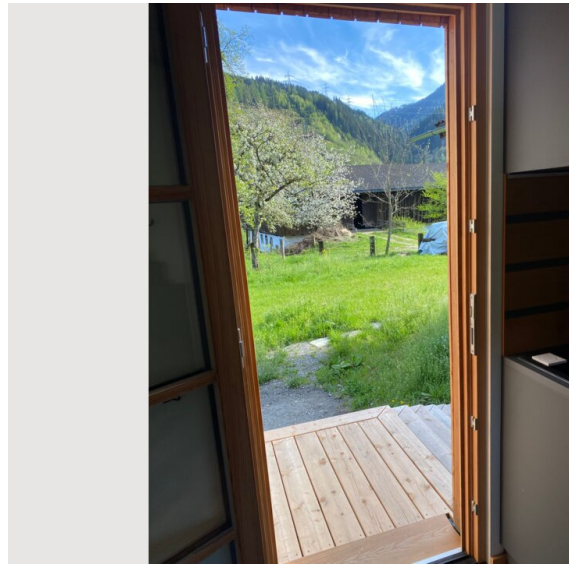
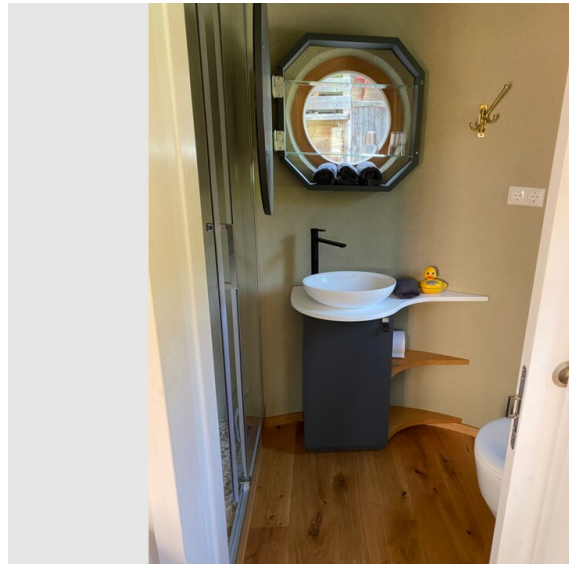
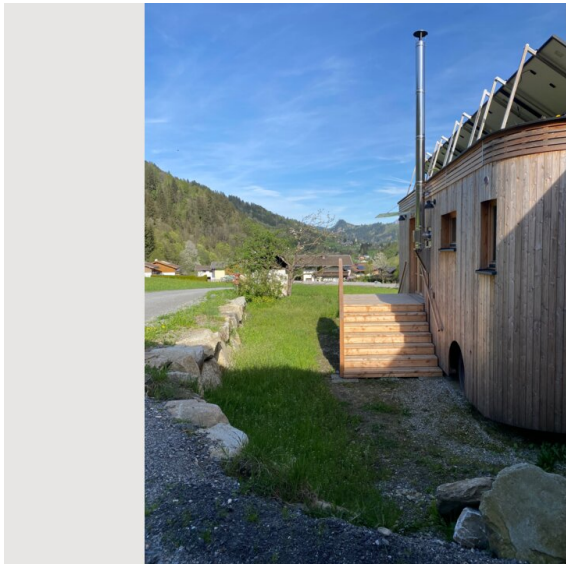
## Picture gallery



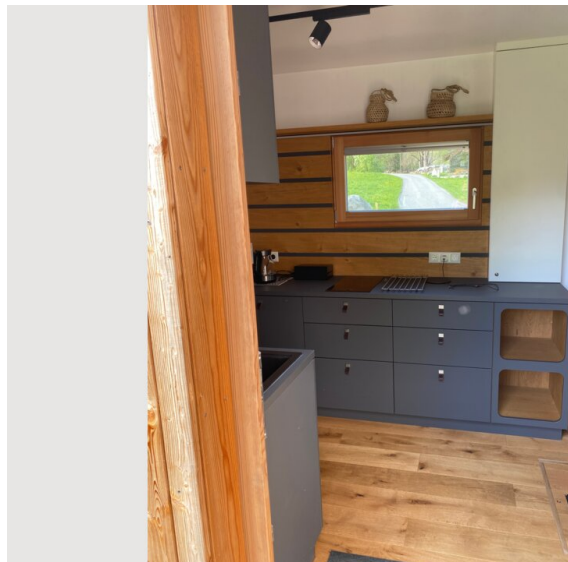
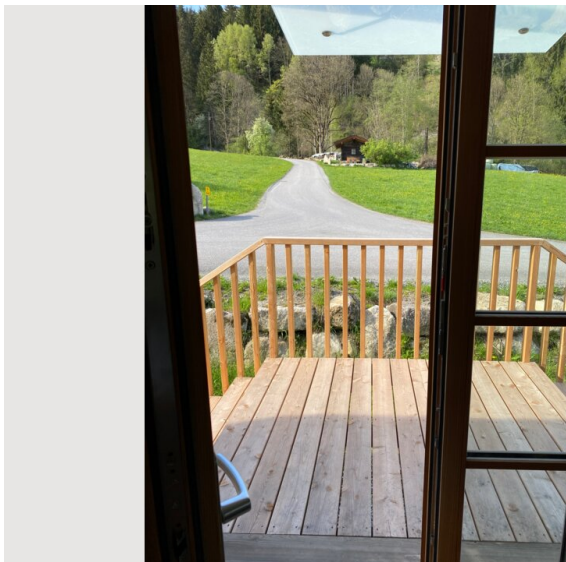
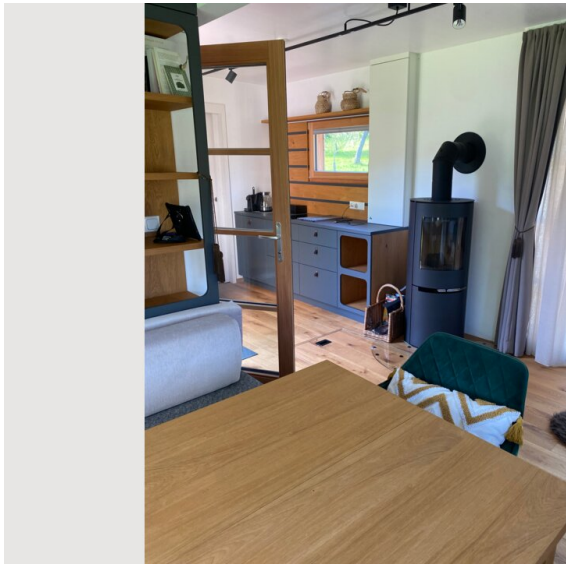
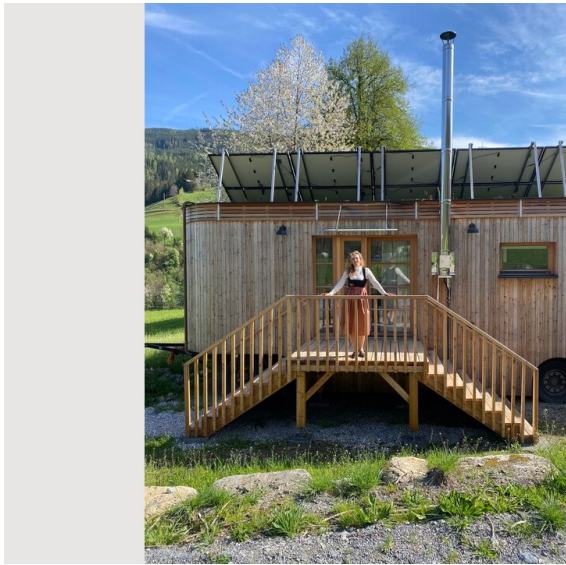


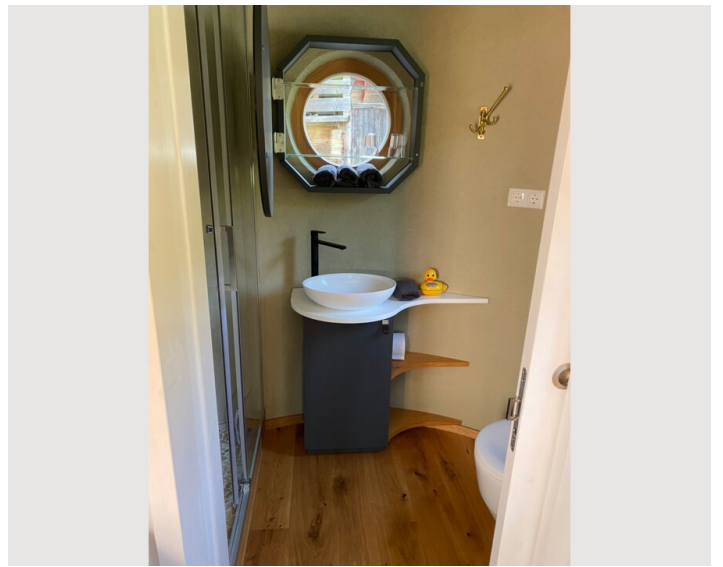












### Infrastructure



2



5 minutes by car away



20 minutes walk away



5 minutes by car away



1 hour by car away

The perfect place to work and relax simultaneously. Working has never been so tranquil and beautiful. You'll be undisturbed here, yet the nearest mountain town is just a 20-minute drive away. Salzburg city is easily accessible by train in just an hour (60 minutes by car).

Discover the idyllic surroundings, inviting you to relax and explore. Numerous walking and cycling trails wind through the breathtaking mountain landscape and picturesque valley.

Start exploring directly from your house on foot or by bike. In just about 20 minutes, you can reach popular ski areas like Hochkönig, Rauris, Gastein, and the Schmittenhöhe in Zell am See. The glacier ski area Kitzsteinhorn is also easily accessible. After an exciting day on the slopes, relax and enjoy at the nearby Tauernspa thermal baths.

The picturesque Lake Zell is only about 15 minutes away and invites you to linger. Experience unforgettable moments in this captivating environment



## Location

