



3 ROOM APARTMENT, 3511 PALT

Apartment Marina

Object number: JQEG1

[View and rent online](#)

Period	26/05/ - 26/06/2026
Number of persons	2
Total incl. VAT.	€ 3.148,68
Security deposit	€ 2.300,00

Requests please via phone or WhatsApp. Tel.: +43 6601456244
Apartment close to Krems in a tranquil green location (First floor of a single-family house with separate entrance) two rooms living room and kitchen Bathroom with toilet and shower



Living space

70m²



Maximum occupancy

6 Persons



Complete accommodation [?]

1 Private bathroom 2 Separated bedrooms 1 Living-Sleepingroom



1. floor



Check-in

07:00 - 23:00 Clock



Check-out

07:00 - 12:00 Clock

Sleeping options

Bedroom 1



1x Double bed (1,40 m x 2 m)



1x Single bed

Bedroom 2



1x Double bed (1,40 m x 2 m)



1x Single bed

Living & Sleeping



1x Double bed (1,40 m x 2 m)

Descripton of accommodation

Welcome to our apartment near Krems, nestled in a serene and verdant setting. Located on the upper floor of a single-family house, our apartment provides the perfect base for an extended stay in the Wachau Valley.

The apartment features two cozy bedrooms, each equipped with two beds, along with a spacious living room and a fully equipped kitchen. The bathroom is fitted with a shower and a toilet.

Access to the apartment is via a spiral staircase from the garden, ensuring privacy from the rest of the house. The ground floor is occupied by two to three persons.

Our garden, which we are delighted to share with our guests, boasts a pool, terrace, and table tennis area.

Enjoy the tranquility and relaxation of this peaceful environment, while still being just a short drive from the city of Krems. Krems can be reached within minutes by car or train. Stein is accessible by bus. Free street parking is available, and the train station is a five-minute walk away.

For booking inquiries or further information, please feel free to contact us via phone or WhatsApp at the provided number. We look forward to welcoming you as our guests soon!

Equipment & Features



Basic equipment

- Balcony
- Garden sharing
- TV
- Bedclothes
- Private toilet
- Vacuum cleaner
- Cleaning utensils
- Terrace
- Internet/Wifi
- Community washing machine
- Towels
- Parking on the road without time limit without any cost
- Iron & ironing board
- Hairdryer



Pool

- Outdoor Pool



First supply

- Toilet paper
- Soap
- shampoo
- Nespresso capsules



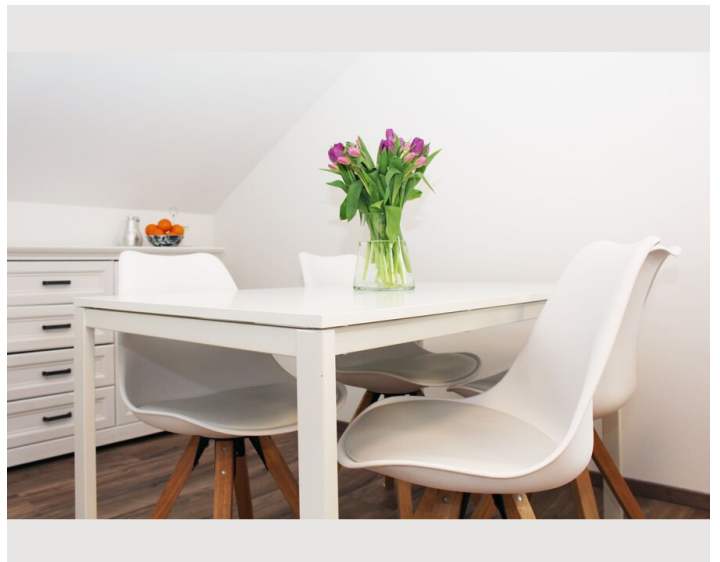
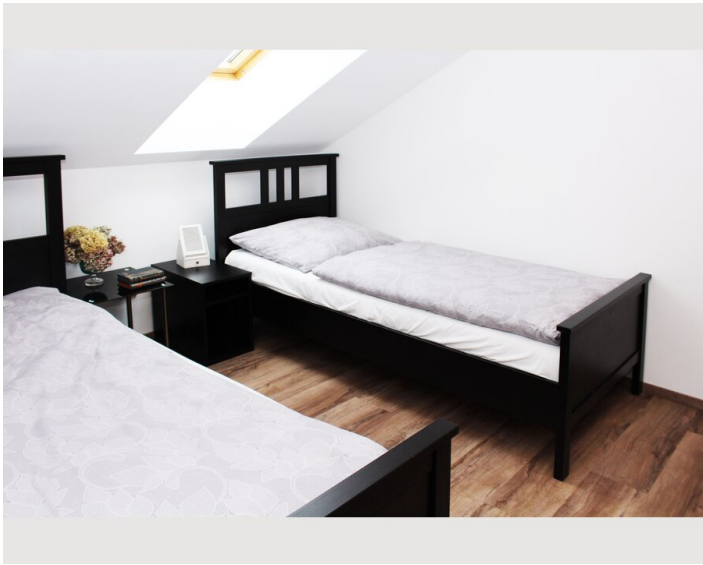
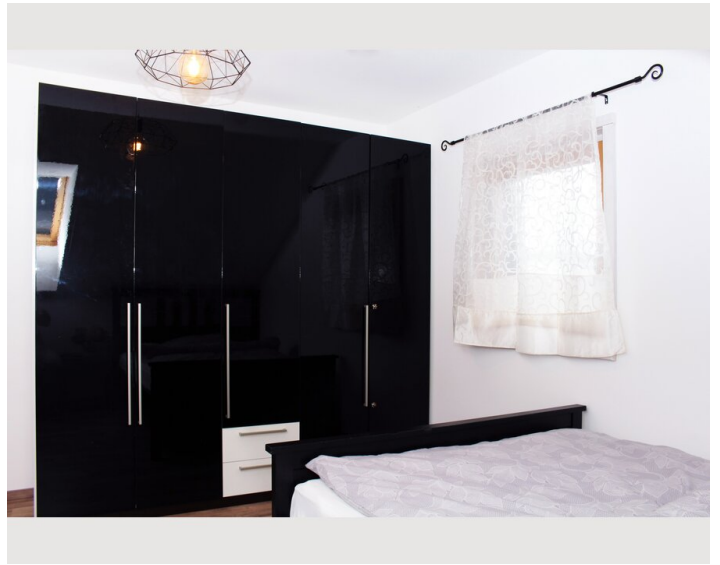
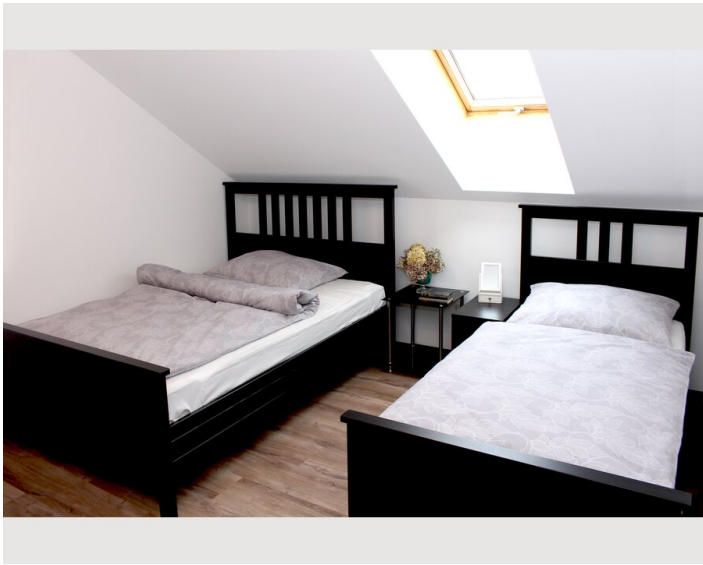
Kitchen

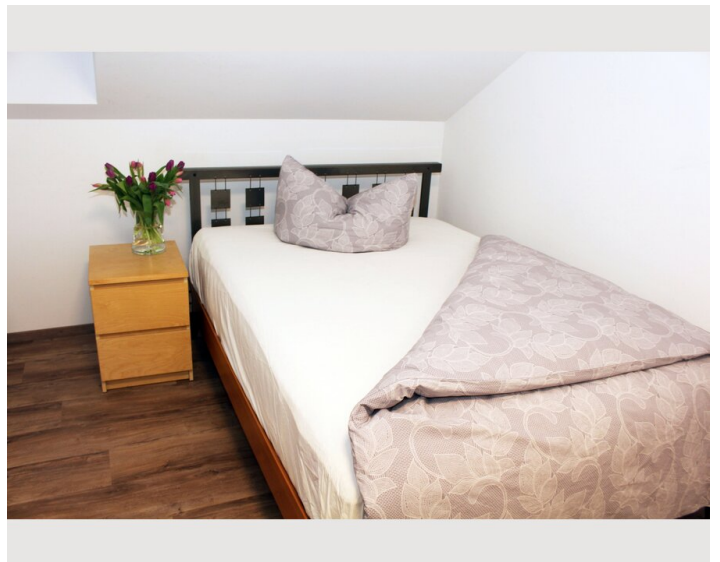
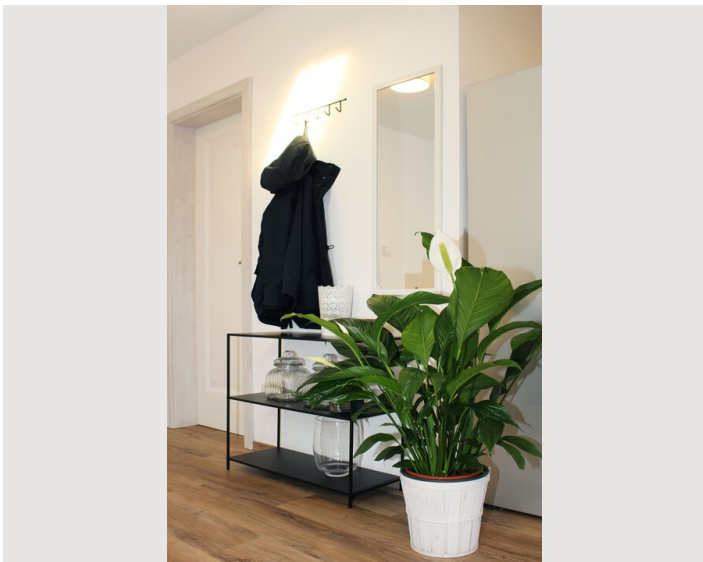
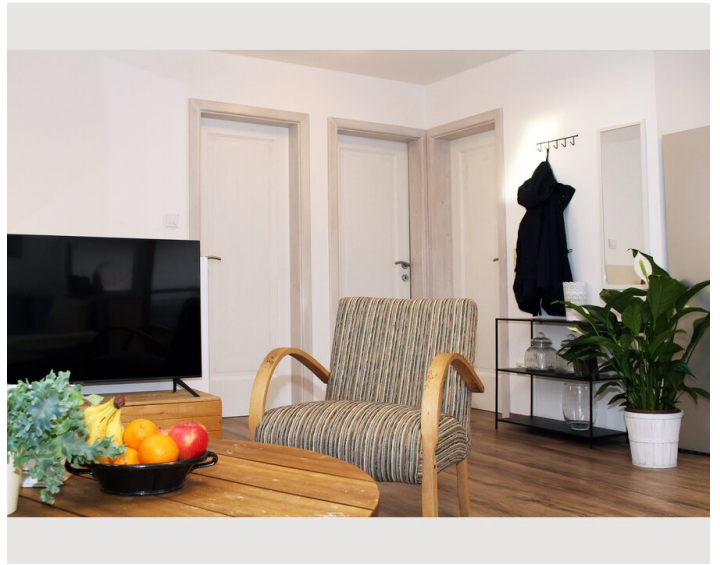
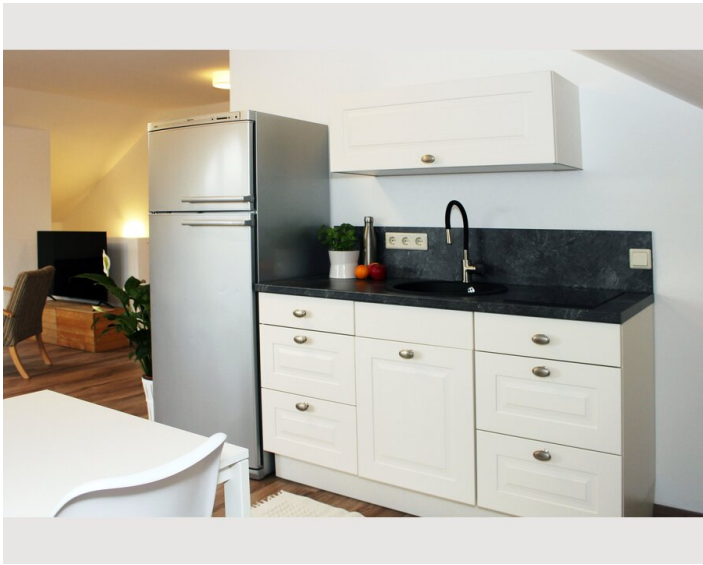
- Private kitchen
- Glasses/Tableware
- Cooking utensils
- Filter coffee

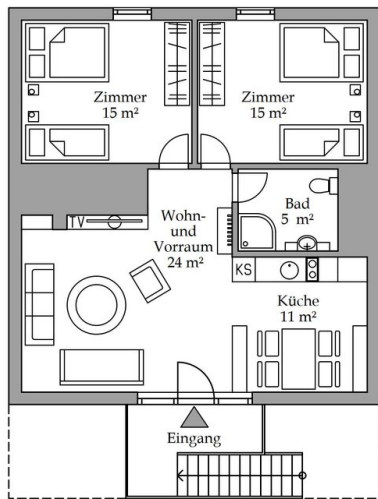
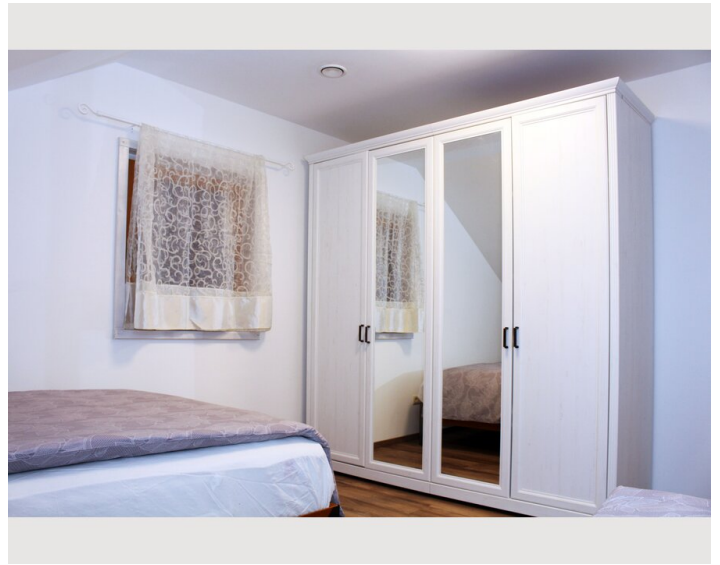
Informations

- Suitable for construction workers
- Private entrance
- Regular cleaning at extra cost
- Suitable for children
- Pets on request


Picture gallery










Infrastructure

 5 minutes walk

 10 minutes walk

 5 minutes walk

 vienna: 1,5 hour per car, 2 hours by train

In the village, you'll find all the basic infrastructure essentials: a restaurant, wine taverns, a supermarket, a pharmacy, schools, sports facilities, a train station, a bank, a post office, and more.

Additional amenities can be found in nearby Krems, including restaurants, cinemas, bars, hospitals, higher education institutions, fitness centers, shopping malls, and swimming pools.

Additionally, in the neighboring town of Stein, you'll find the Danube University and DPU.

Both Krems and Stein are easily accessible within 5-10 minutes by car or train.

Location

