

2 ZIMMER WOHNUNG, 1210 VIENNA

## Vienna Pool Penthouse

Object number: VPP\_1

[View and rent online](#)

<b>Period</b>	27/08/ - 27/09/2025
<b>Number of persons</b>	2
<b>Total</b> incl. VAT.	€ 1.988,28
Security deposit	€ 1.500,00

Beautiful apartment, 7 minutes' walk from the subway, on the top floor with south-facing terrace and far-reaching views for rent. Ideal for use as a home office. A 25 meter long pool in the extensive gardens is free to use.



### Living space

53m<sup>2</sup>



### Maximum occupancy

2 Persons



### Complete accommodation <sup>?</sup>

1 private bathroom 1 Separated bedroom 1 Living-Sleepingroom



### 6. floor

Elevator available



### Check-in

08:00 - 23:00 Clock



### Check-out

08:00 - 23:00 Clock

## Sleeping options

### Sleeping room



1x Double bed (1,40 m x 2 m)

### Living and sleeping



1x Double bed (1,40 m x 2 m)

## Descripton of accommodation

This quiet apartment offers a large entrance hall with cupboards and wardrobe, an eat-in kitchen and a bedroom. The apartment was completely renovated in 2022, everything is new. It is located on the 6th and top floor and offers a beautiful view of the Donaufelderkirche and the Danube Tower.

## Equipment & Features



### Basic equipment

- Roof-terrace
- Internet/Wifi
- Bedclothes
- Private toilet
- Garden sharing
- Private washing machine
- Towels
- Cleaning utensils



### Fireplace

- Charcoal grill



### Pool

- Outdoor Pool



### First supply

- Toilet paper
- Soap



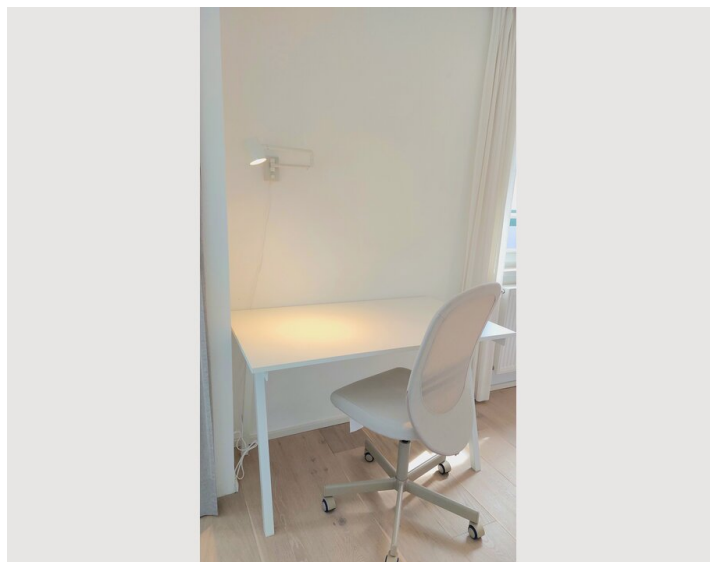
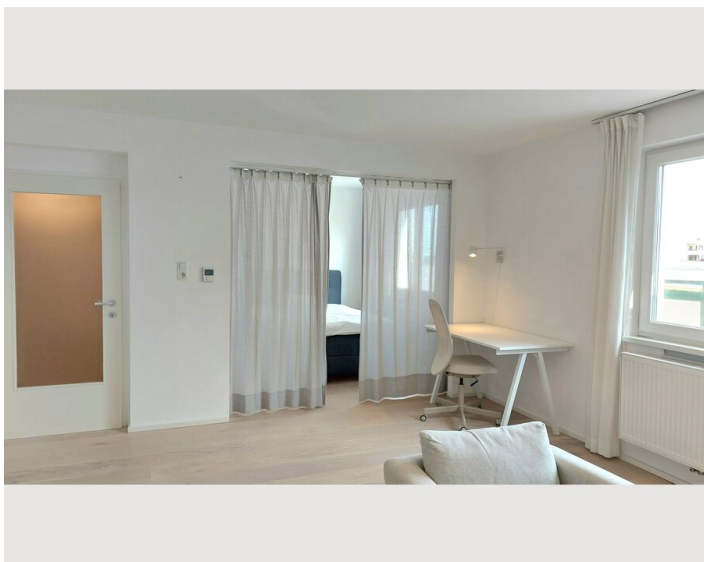
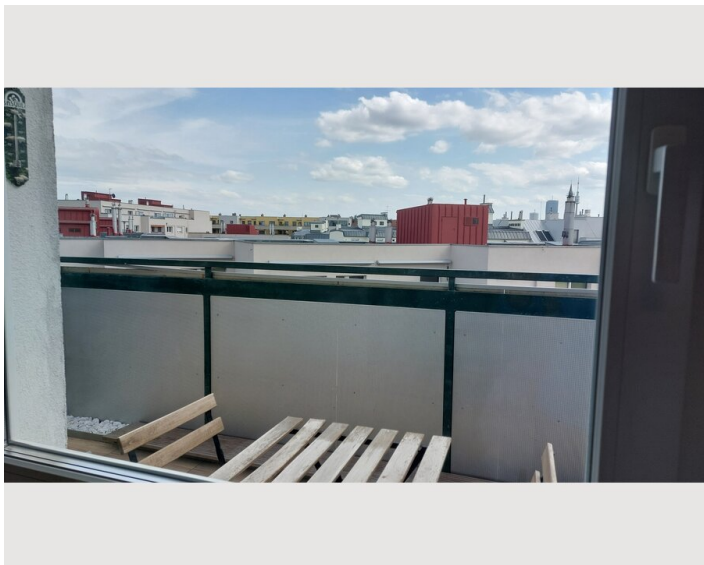
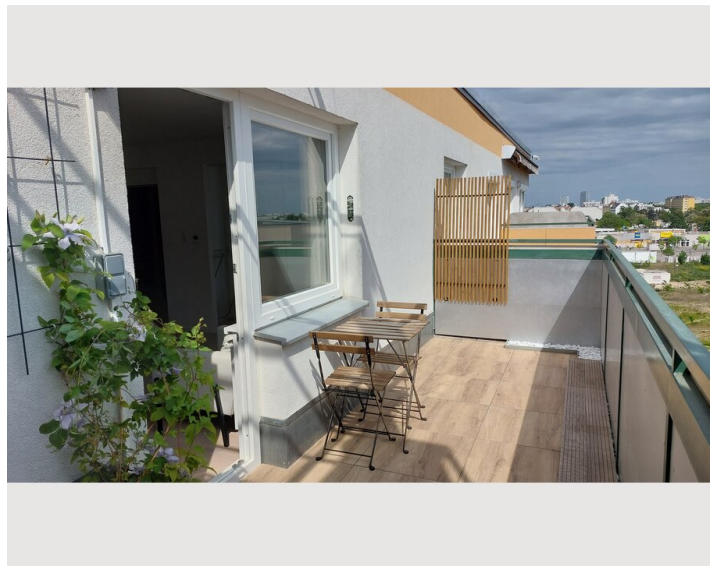
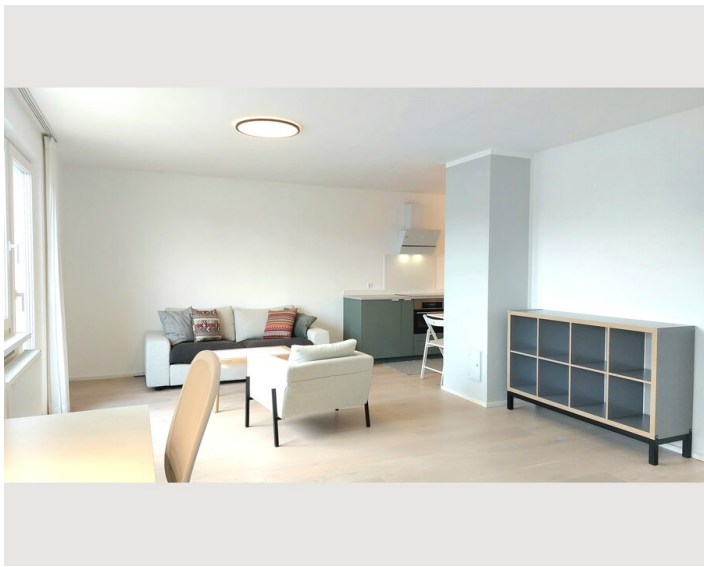
### Kitchen

- Private kitchen
- Glasses/Tableware
- Dishwasher
- Microwave

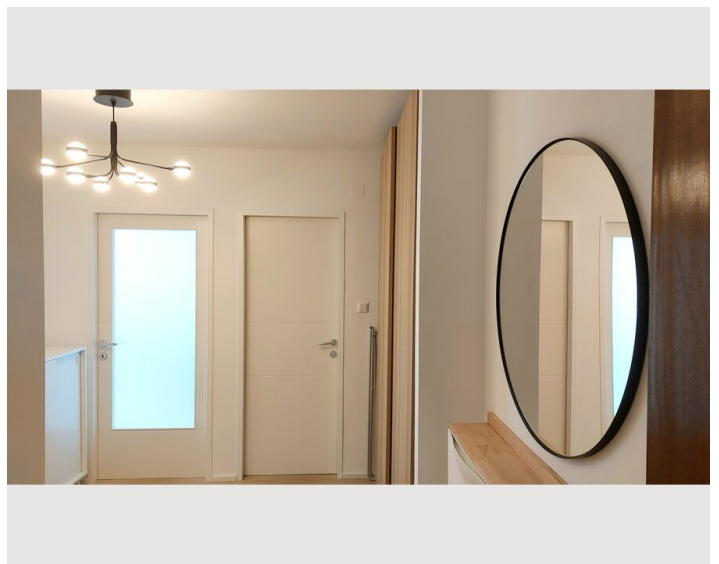
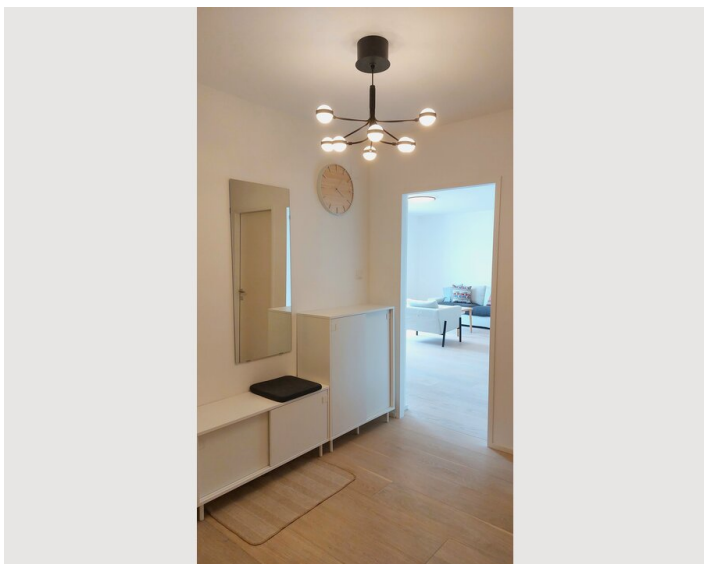
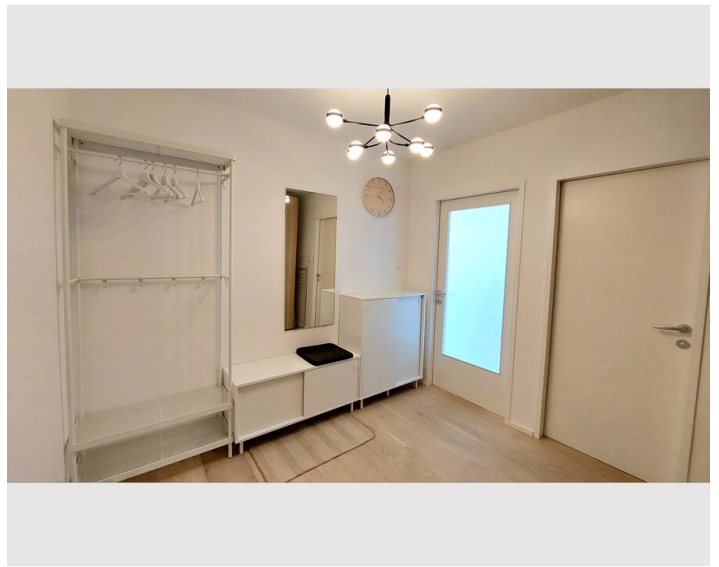
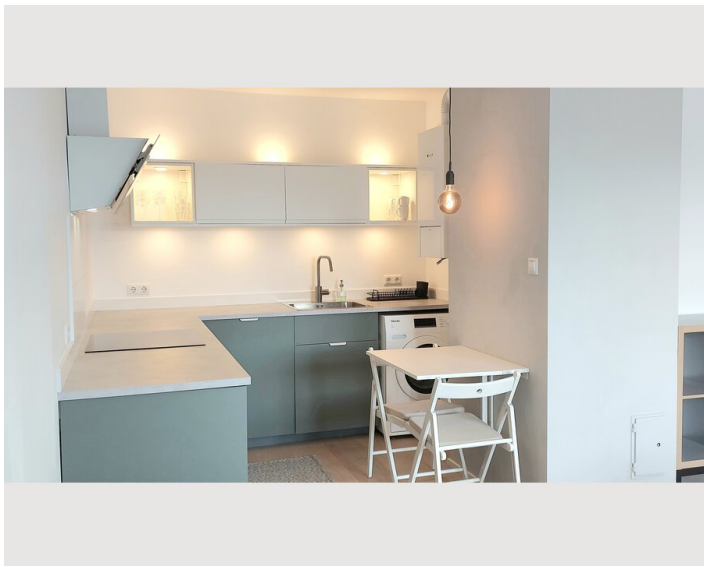
## Informations

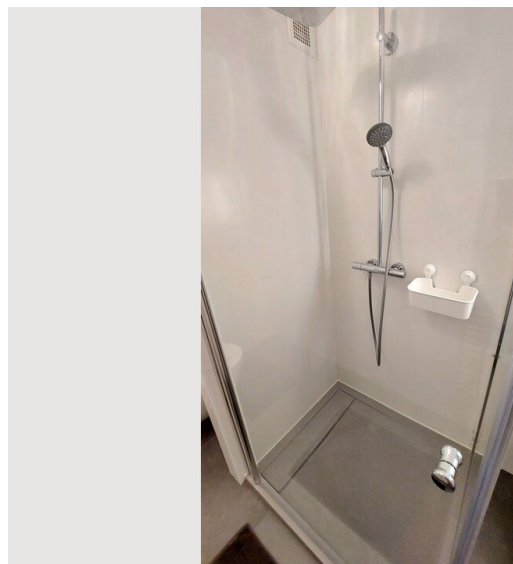
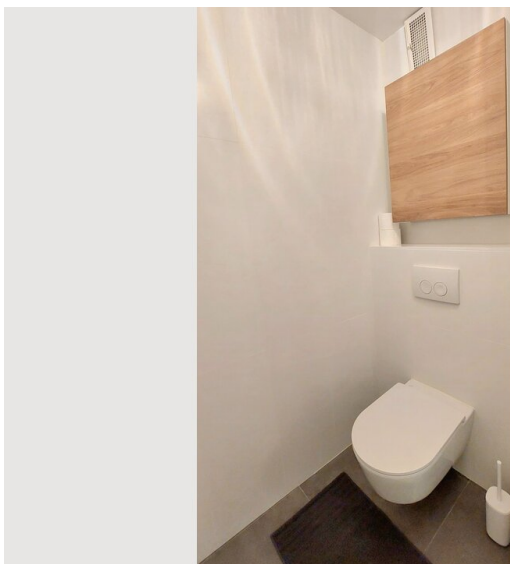
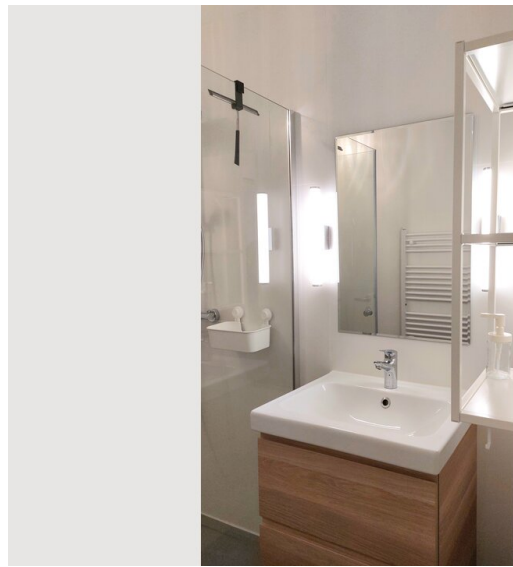
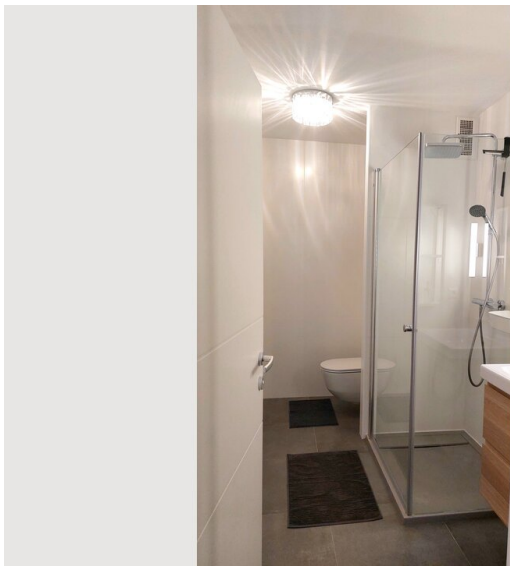
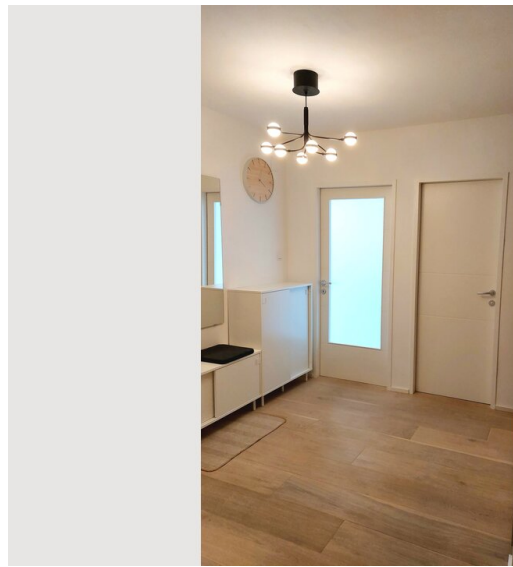
- Suitable for construction workers
- Smoking not allowed
- Desk/Workplace
- Pets forbidden
- Bicycle room free of charge
- Suitable for children
- Free short-term parking zone
- Private entrance
- Regular cleaning at extra cost

## Picture gallery









## Infrastructure



Metro and train station "Floridsdorf" is just 7 minutes by feet

The apartment is located near the "Floridsdorf" train station, from where you can reach the city center in about 15 minutes. There are many shops and restaurants in the immediate vicinity of the apartment. The "Alte Donau" recreational area is just a few minutes' walk away and is ideal for swimming and walking.

## Location

