



2 ZIMMER WOHNUNG, 1030 VIENNA

modern, luxurious, centrally located penthouse with terrace - 15 minutes walk to Stephansplatz, 25 minutes to the airport by train

Object number: WESV1

[View and rent online](#)

The modern and bright top-floor penthouse apartment has been furnished with high-quality materials. It has large panoramic windows and on nice days the terrace invites you to linger and enjoy sunset.

Period	12/06/ - 12/07/2025
Number of persons	2
Total incl. VAT.	€ 3.356,90
Security deposit	€ 2.600,00



Living space

67m²



Maximum occupancy

2 Persons



Complete accommodation [?]

1 private bathroom 1 Separated bedroom



4. floor

Elevator available



Check-in

00:00 - 00:00 Clock



Check-out

00:00 - 00:00 Clock

Sleeping options

Sleeping room



1x Double bed (1,80 m x 2 m)

Descripton of accommodation

The apartment has a spacious combined kitchen and living room, which is extremely bright and inviting thanks to the large panoramic windows. The cooking area has all the usual kitchen appliances and a modern Bora air extraction system, which makes cooking, working and living in one room even more pleasant. The bedroom and the cozy terrace open onto a quiet inner courtyard. The bathroom has a walk-in rainforest shower and a washing machine. To keep the apartment at a pleasant temperature even on hot days, it has air conditioning and an additional ceiling cooling system. There is also external shading for all window areas. High-quality materials have been used to furnish the apartment, further enhancing the living experience.

Equipment features



Basic equipment

- Terrace
- TV
- Bedclothes
- Private toilet
- Vacuum cleaner
- Cleaning utensils
- Internet/Wifi
- Private washing machine
- Towels
- Aircondition
- Iron & ironing board
- Hairdryer



First supply

- Toilet paper
- Soap
- Fridge filling on request
- shampoo
- Nespresso capsules



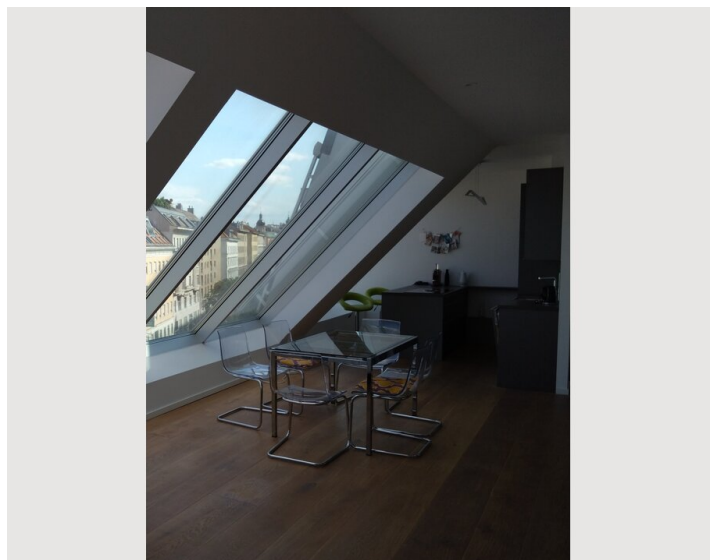
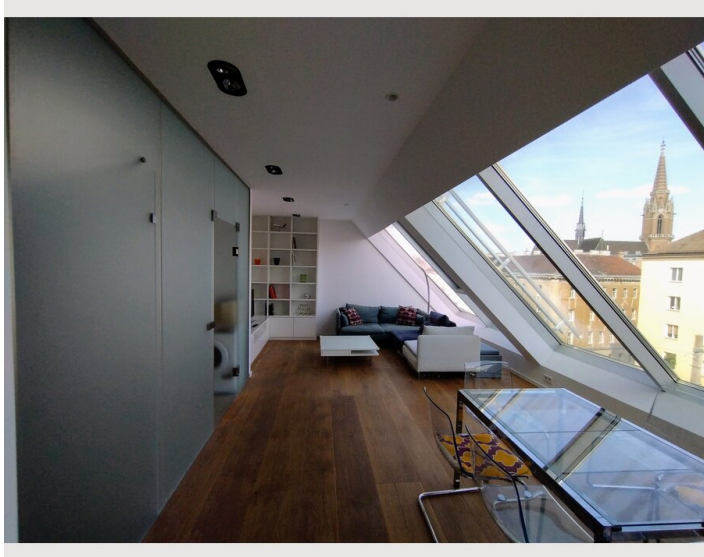
Kitchen

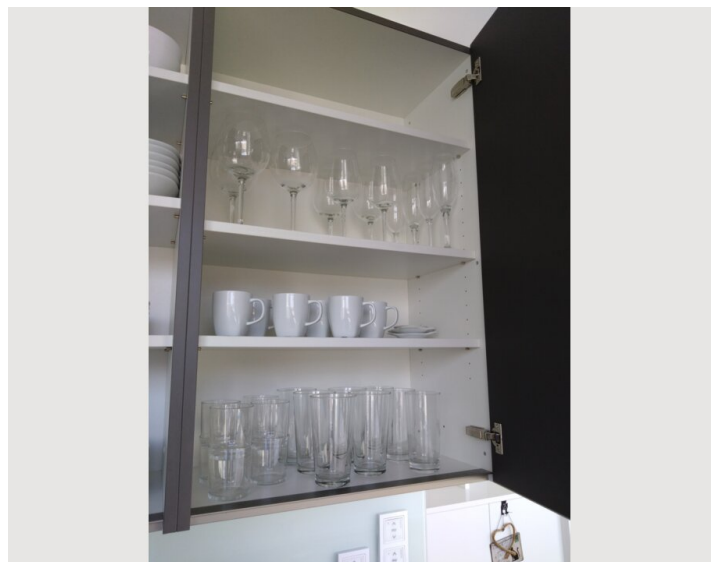
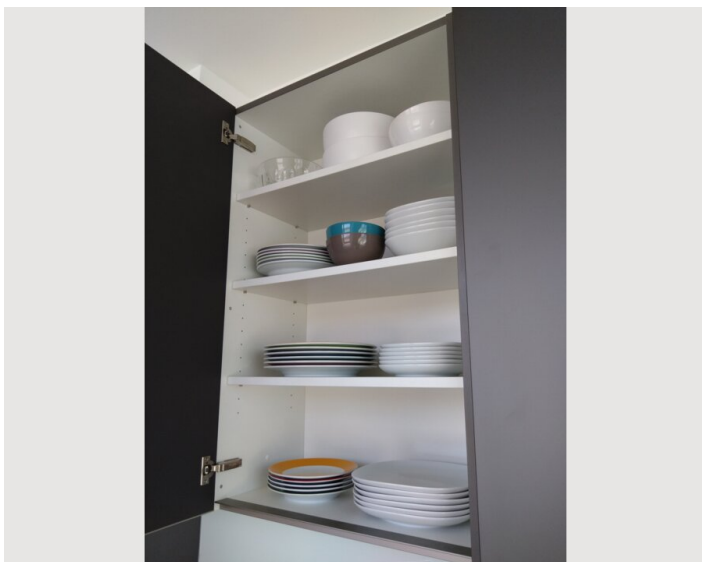
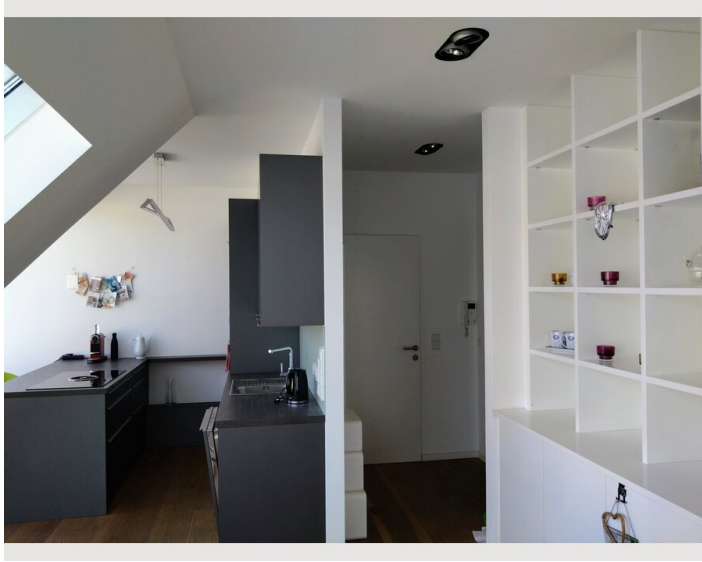
- Private kitchen
- Glasses/Tableware
- Dishwasher
- Cooking utensils
- Espresso machine
- Microwave

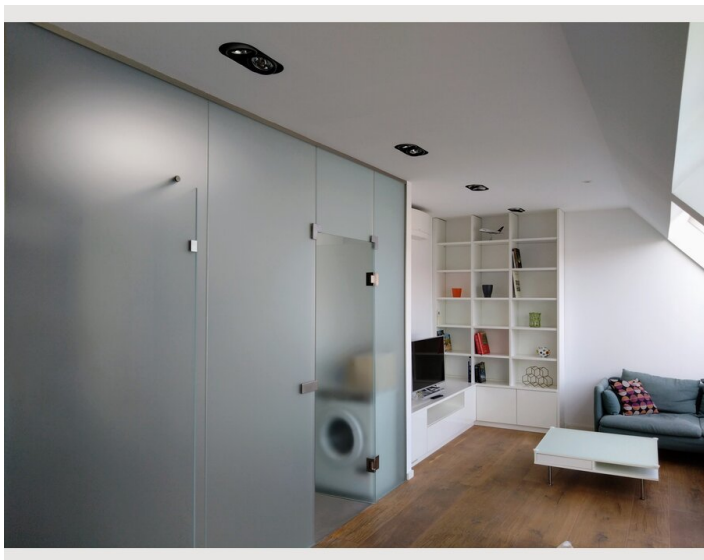
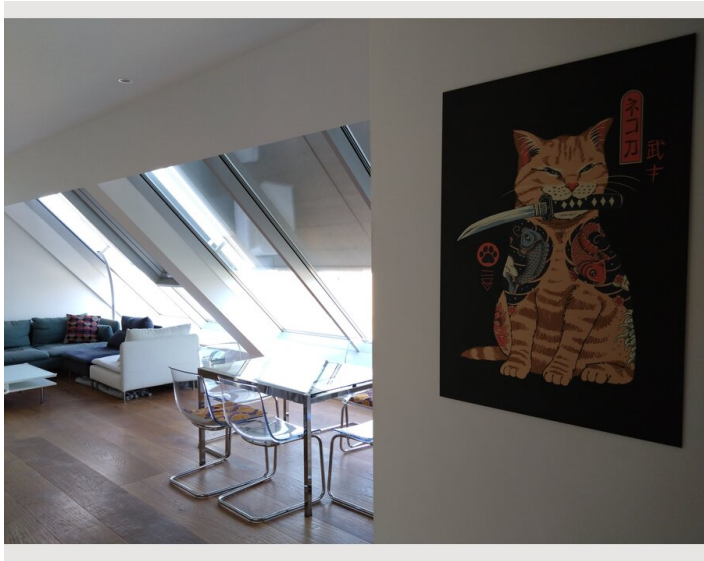
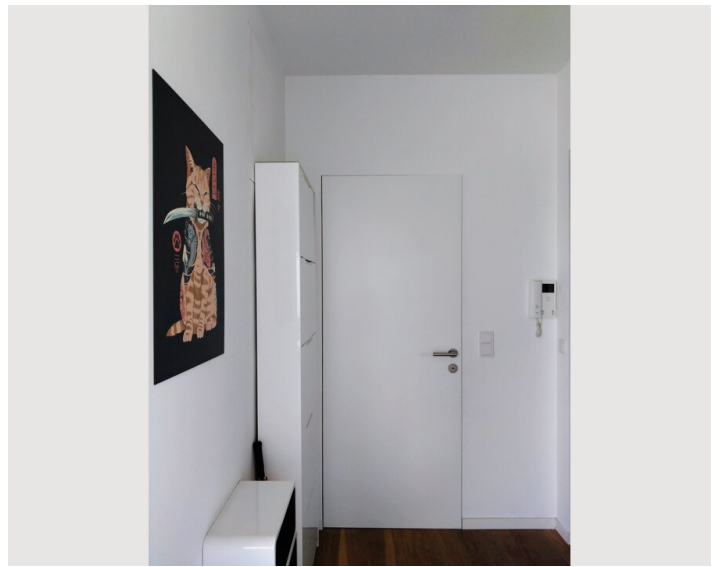
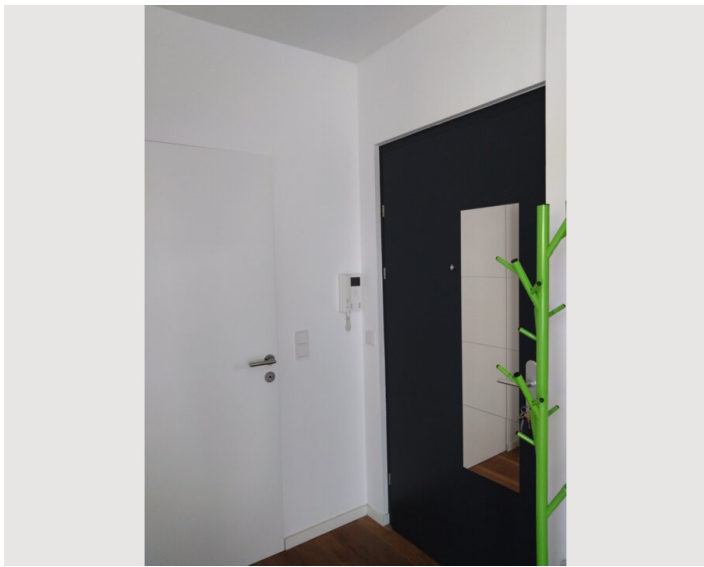
Informations

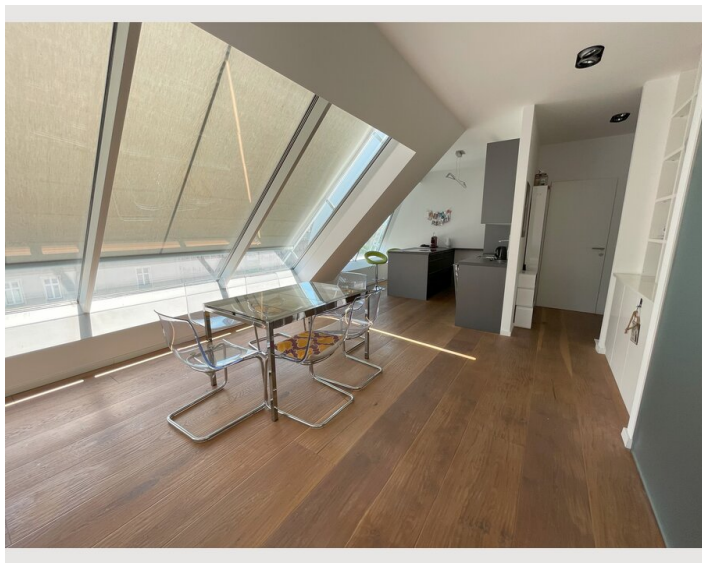
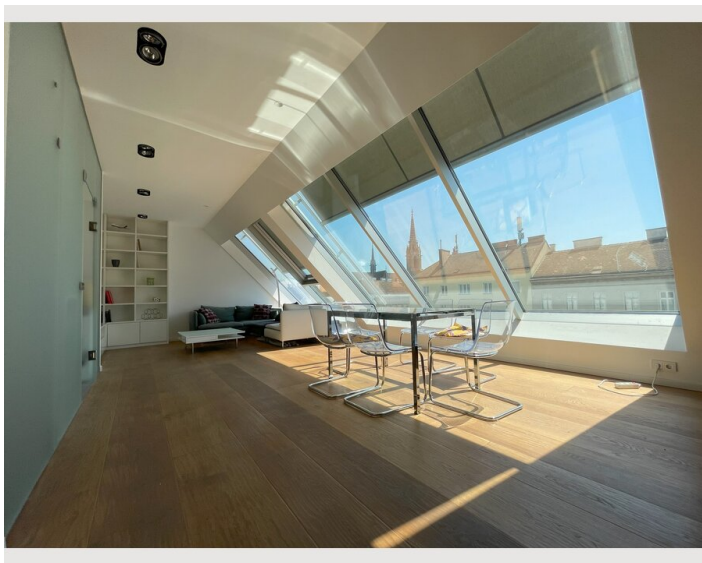
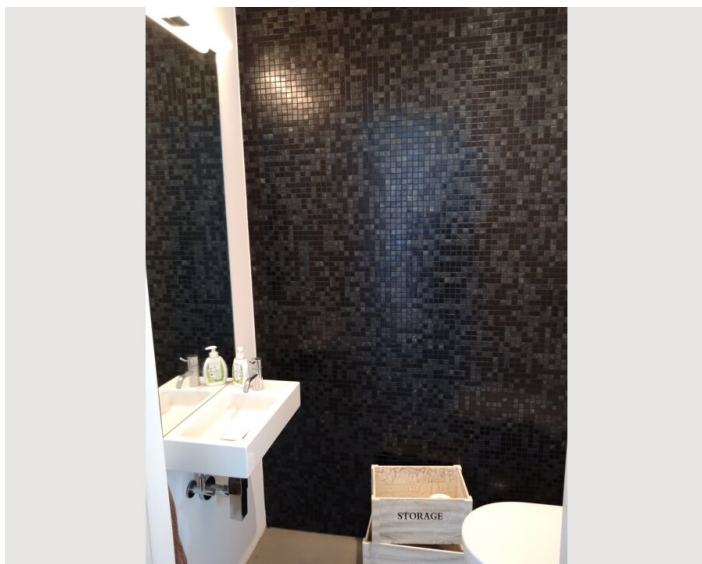
- Smoking not allowed
- Private entrance
- Regular cleaning at extra cost
- Short-term parking zone subject to a charge
- Pets on request
- Bicycle room free of charge

Picture gallery









Infrastructure



Wien Mitte train station approx. 300m away (regional trains and CAT, subway lines U4 and U3), tramway lines 1 and O approx. 200m away



Airport can be reached in approx. 25 minutes by regional train or CAT



Stephansplatz (St. Stephen's Cathedral) 1km away



several supermarkets in the immediate vicinity, Wien Mitte "The Mall" approx. 300m away

The infrastructure around the apartment is ideal: supermarkets, a shopping center ("The Mall") and the wide selection of stores on Landstraßer Hauptstraße are in the immediate vicinity. There are several nice restaurants on Radetzkyplatz just a few steps away. From there it is also only a few meters to the Danube Canal, which invites you to linger or jog and offers a variety of restaurants and bars. The Prater recreational area and famous amusement park are also within walking distance. The Stadtpark and of course Vienna's 1st district with all its amenities can also be reached in just a few minutes of walking.

Location

