



2 ZIMMER WOHNUNG, 1020 VIENNA

ARIZE - New Terrace Apartment with Open Plan Kitchen, Located Centrally; Vienna Prater 1020

Object number: ARIZE-1

[View and rent online](#)

The apartment is 35m2 with a separate bedroom and has a large terrace (10m2) facing the street. It's located in a very quiet neighborhood and contains everything you need to live and feel good.

Period	08/07/ - 08/08/2025
Number of persons	2
Total incl. VAT.	€ 1.680,62
Security deposit	€ 1.300,00



Living space

45m²



Maximum occupancy

2 Persons



Complete accommodation [?]

1 private bathroom 1 Separated bedroom



4. floor

Elevator available



Check-in

14:00 - 23:00 Clock



Check-out

11:00 - 12:00 Clock

Sleeping options

Sleeping room



1x Double bed (1,60 m x 2 m)

Description of accommodation

Welcome to ARIZE - your feel-good oasis!

This apartment has just been completely renovated and furnished to a high standard. It is very centrally located in the 2nd district of Vienna. 5-7 minutes walk from Praterstern train station.

It is very cozy and quiet, perfect for those who want to work at home with their laptop.

As you are on the 4th floor, the apartment is relatively bright. The bedroom is separated from the living room by a curtain.

The apartment is modern and timeless and contains everything you need for your stay.

There are 3 supermarkets (Lidl, Penny and Sheva) and other stores for daily needs not far away (approx. 2 min.).

The location is simply great, as you can get everywhere quickly. With the S-Bahn, which is directly at Praterstern, you can get directly to the airport.

The subway lines U1 and U2 are also close by. The green Prater park with all its great attractions is just around the corner.

All you need is a suitcase and your toothbrush and you can enjoy your morning coffee on the terrace.

Equipment & Features



Basic equipment

- Terrace
- TV
- Bedclothes
- Private toilet
- Iron & ironing board
- Hairdryer
- Internet/Wifi
- Private washing machine
- Towels
- Vacuum cleaner
- Cleaning utensils



First supply

- Toilet paper
- Soap
- shampoo
- Nespresso capsules



Kitchen

- Private kitchen
- Glasses/Tableware
- Dishwasher
- Cooking utensils
- Espresso machine
- Microwave

Informations

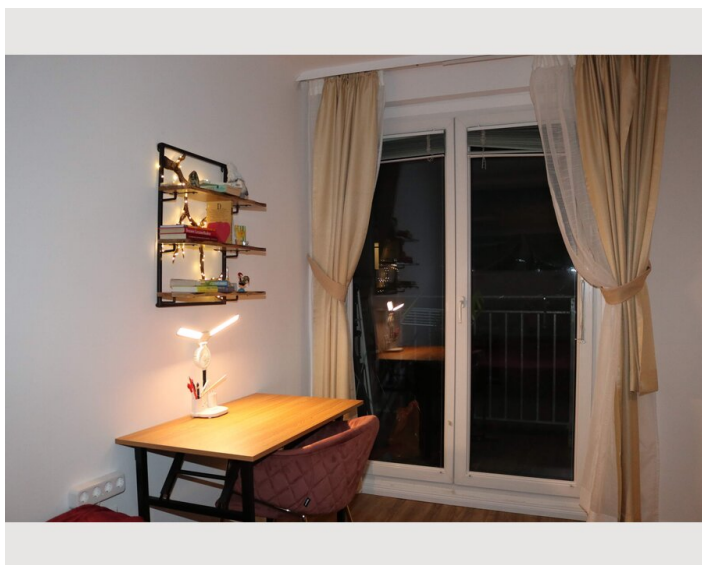
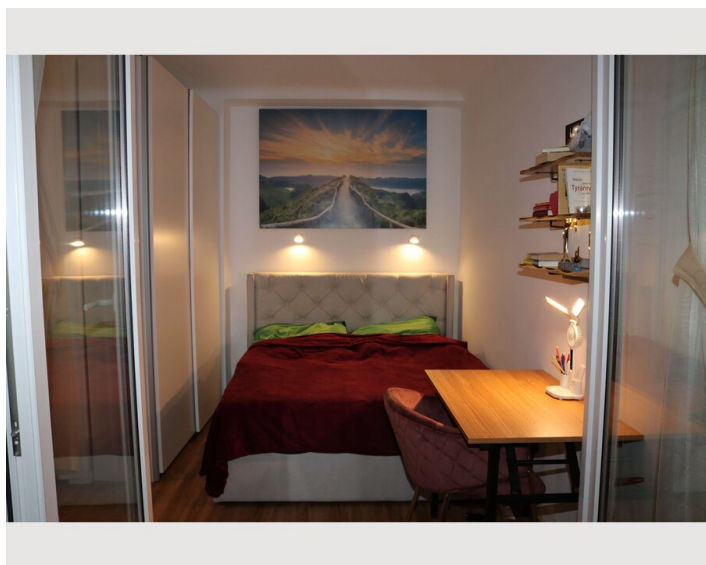
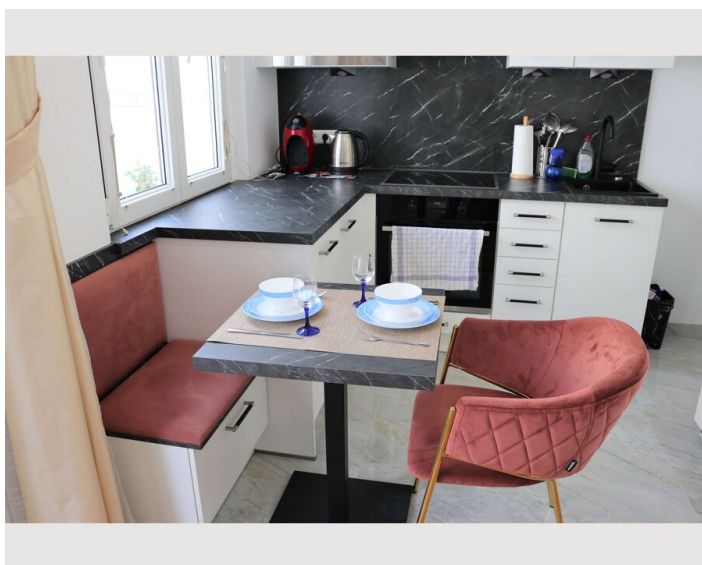
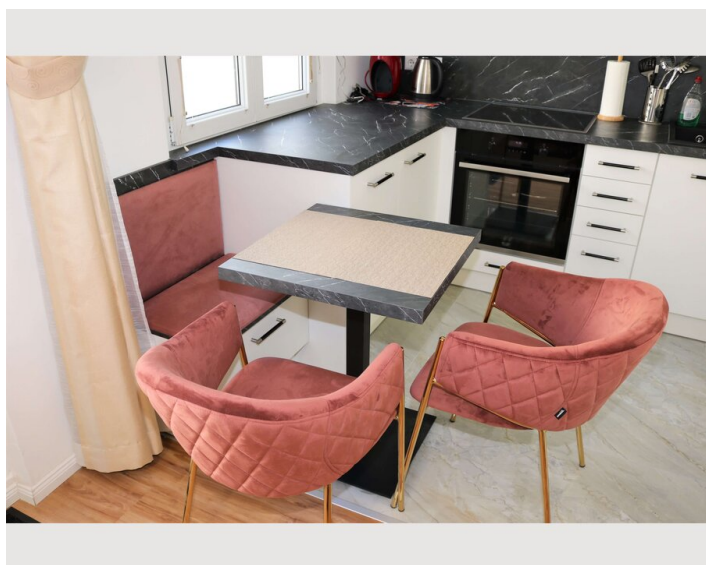
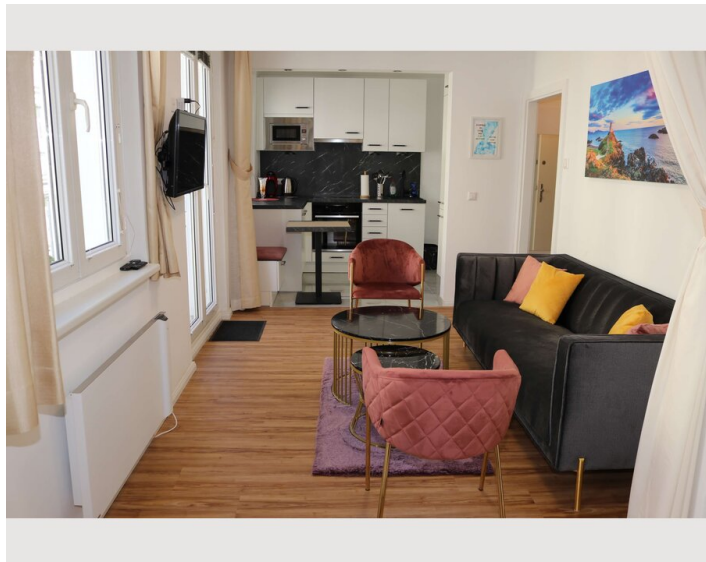
- Suitable for construction workers
- Smoking not allowed
- Desk/Workplace
- Regular cleaning at extra cost
- Not suitable for children
- Short-term parking zone subject to a charge
- Pets forbidden

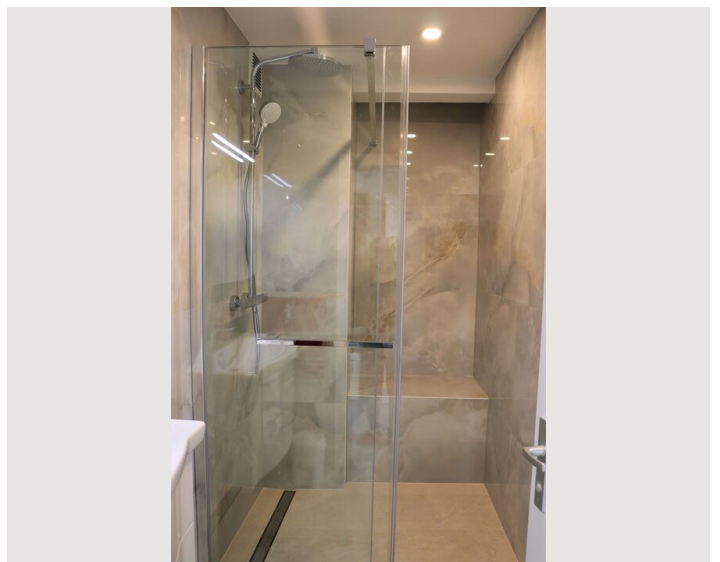
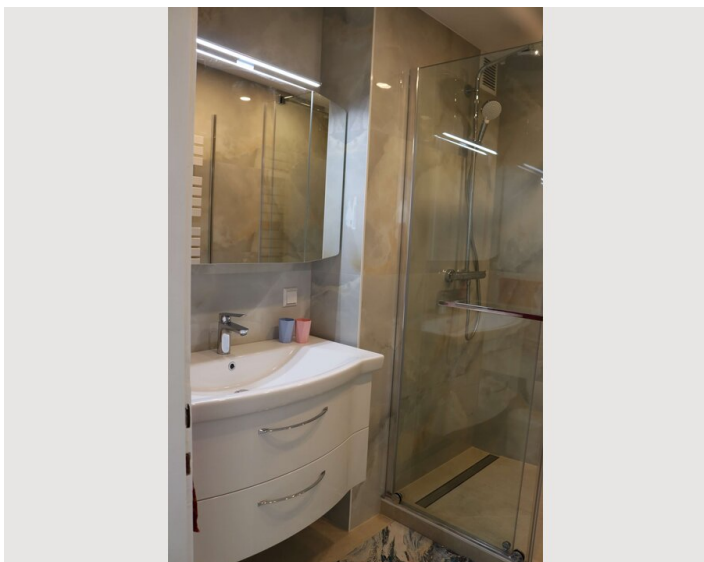
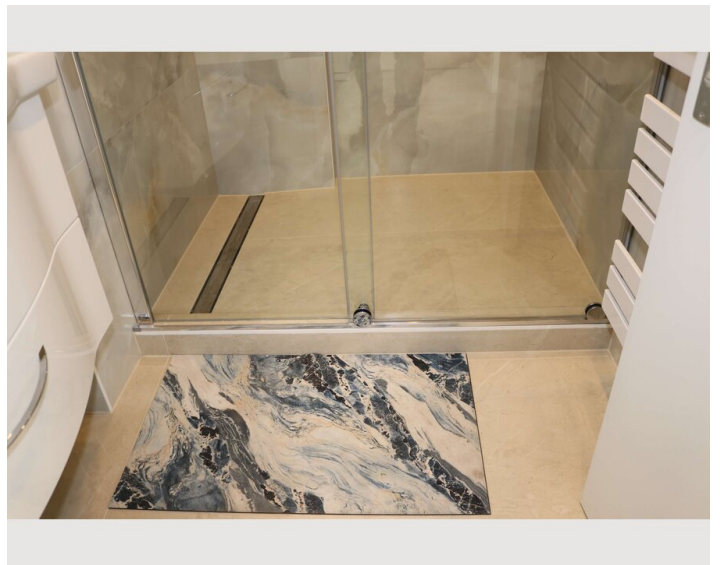
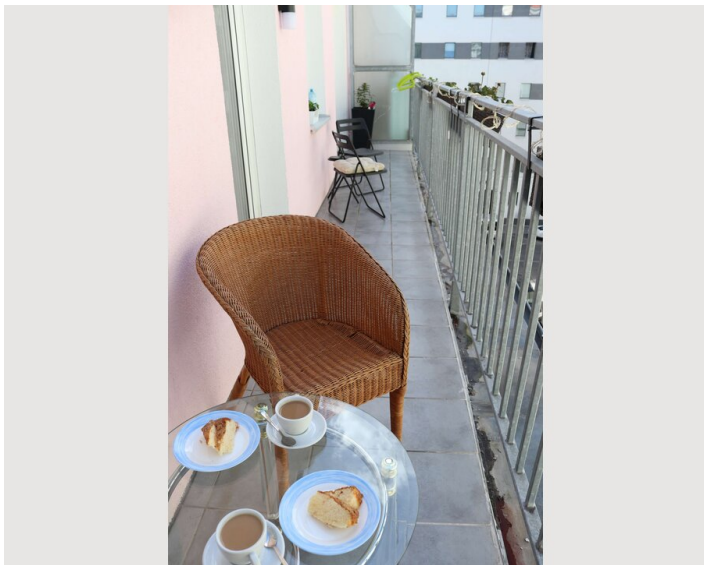
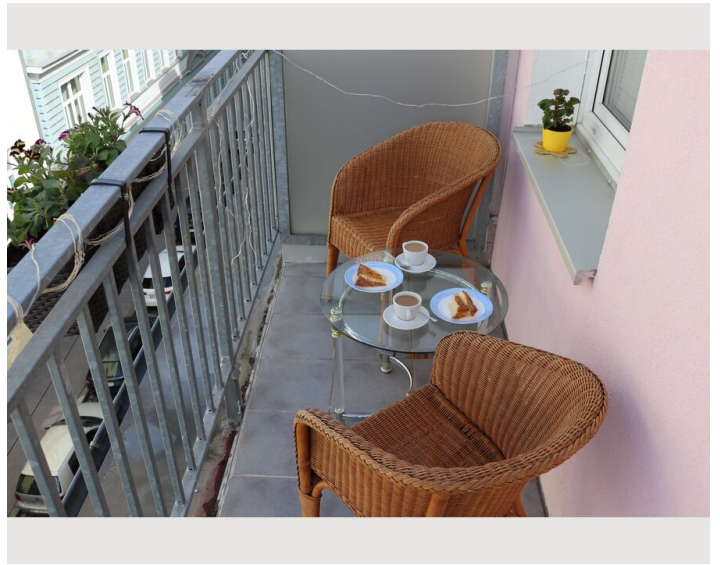
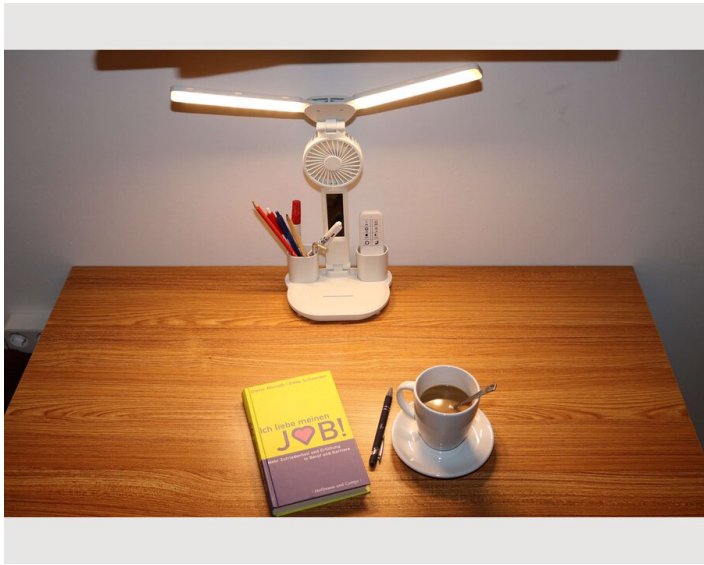
Additional services

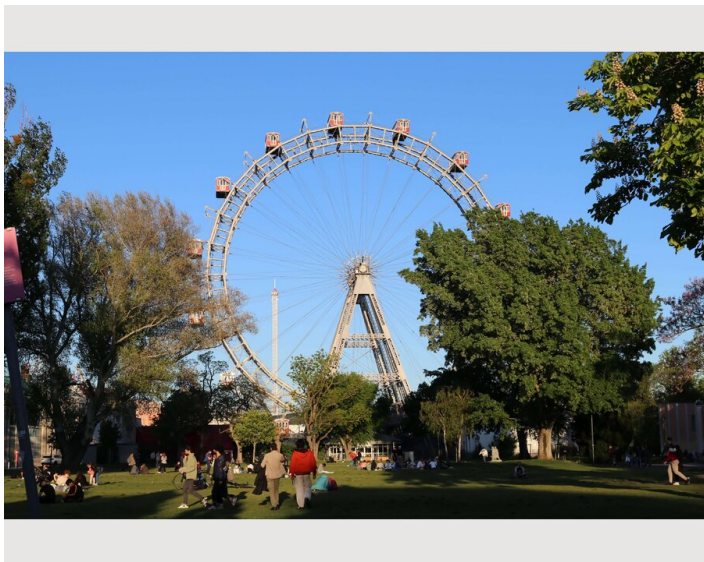
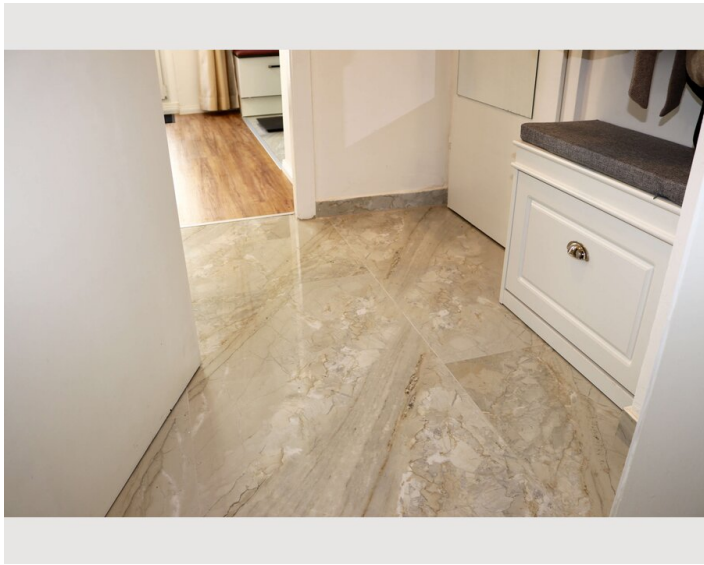
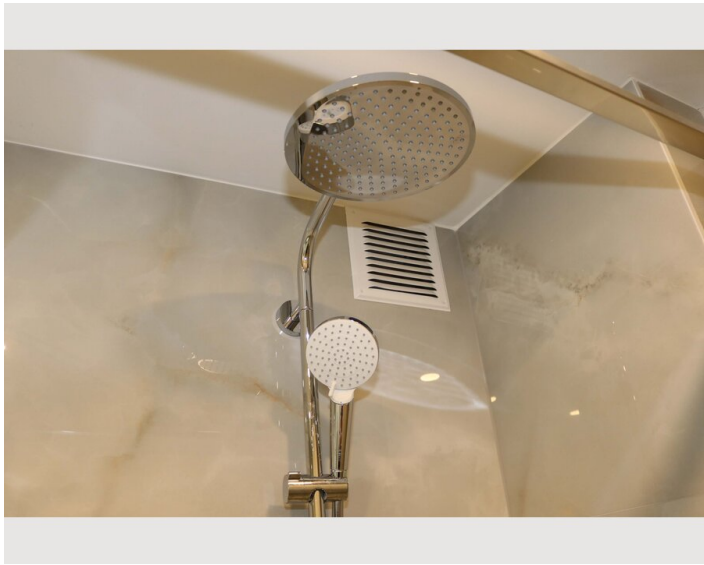
- Cleaning 4x per month (1x per week) (€ 230,00)

All prices are gross per month - billing is done directly with the lessor.

Picture gallery









Infrastructure



Train station: Praterstern



Lidl, Penny, Shefa, bakery



Metro station U1, U2 (Praterstern)



5B, 5A



From the airport you can take the S7 train directly to Praterstern. Change of trains not necessary

Praterstern train station:

S-Bahn lines: S1, S2, S3, S4, S7, ÖBB

Subway lines: U1, U2

Tram: O, 5

Buses: 5B, 80A, 82A 175

Night buses: N25, N81

Highlights:

Praterstern station also has a supermarket (Billa) which is open until 22:00 at weekends. (One of the few in the whole of Vienna).

Cycle path: the so-called "Prater Hauptallee" is around 4.5 km long and is the ideal leisure activity for cyclists

Location

