



2 ROOM APARTMENT, 5020 SALZBURG

Charming little house with garden terrace in a peaceful paradise, Salzburg Parsch, 15 minutes' walk to the city center.

Object number: SUHD1

[View and rent online](#)

This charming little house is located in Salzburg Parsch, a quiet & idyllic area with a romantic garden. A perfect retreat just 15' walk from the city center. With a balcony, terrace, and fireplace, it combines coziness with urban convenience.

Period	21/12/2025 - 21/01/2026
Number of persons	2
Total incl. VAT.	€ 2.131,06
Security deposit	€ 1.600,00



Living space

65m²



Maximum occupancy

2 Persons



Complete accommodation [?]

1 Private bathroom 1 Separated bedroom 1 Living-Sleepingroom



2. floor



Check-in

13:00 - 18:00 Clock



Check-out

11:00 - 14:00 Clock

Sleeping options

Sleeping room



1x Double bed (1,40 m x 2 m)

Living and sleeping



1x Sofa bed (2 persons)

Descripton of accommodation

This charming, characterful little house is nestled in one of the most peaceful and idyllic areas of Salzburg, in the sought-after district of Parsch. Surrounded by a romantically overgrown garden that feels like an oasis, the property offers a perfect retreat far from the noise of the city, where the only sounds you'll hear are the chirping of birds.

The location couldn't be better: Despite its secluded tranquility, the Salzburg city center is just a 15-minute walk away. This makes the house a perfect blend of paradise-like relaxation and urban convenience.

Inside, you'll find a cozy atmosphere with many thoughtful details. Enjoy the fresh air on the balcony or terrace, and on cooler evenings, let the crackling fireplace fill the space with comforting warmth.

A unique retreat for those who value peace, nature, and proximity to the city in equal measure.

Equipment & Features



Basic equipment

- Balcony
 - Winter garden
 - Garden sharing
 - Music system/docking station
 - Private dryer
 - Towels
 - Private parking space
 - Cleaning utensils
 - Terrace
 - Garden
 - Internet/Wifi
 - Private washing machine
 - Bedclothes
 - Private toilet
 - Vacuum cleaner
 - Hairdryer
-



Fireplace

- Tiled stove
-



First supply

- Toilet paper
 - Soap
 - shampoo
-



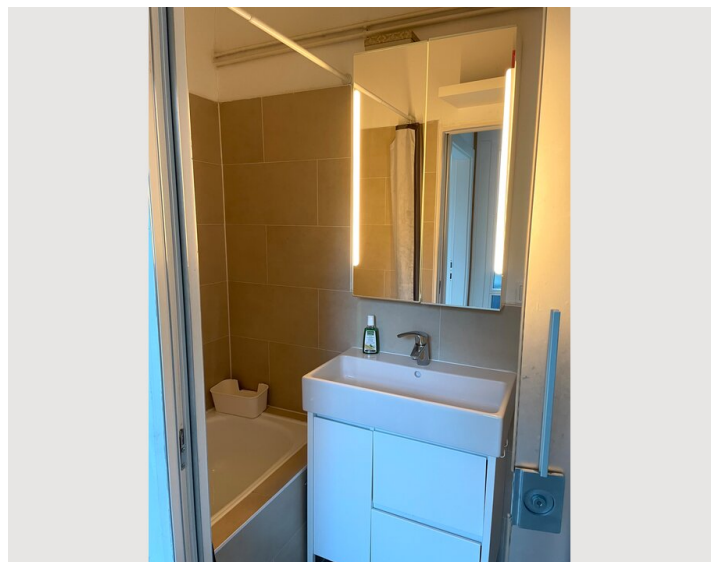
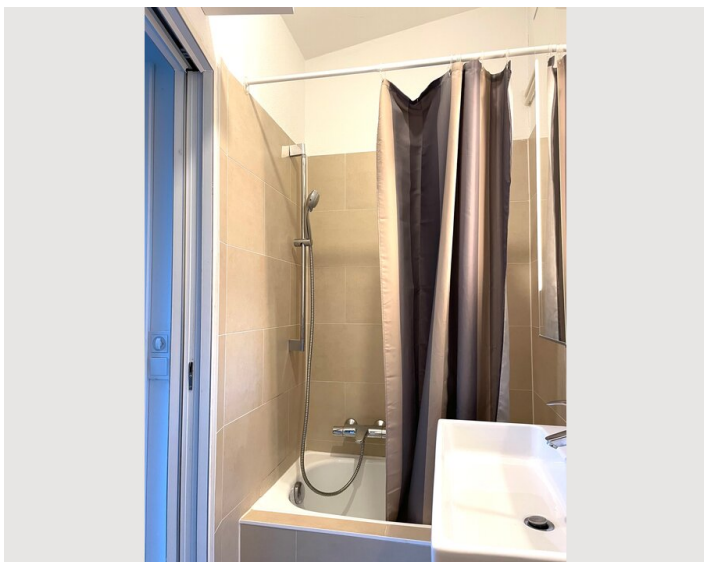
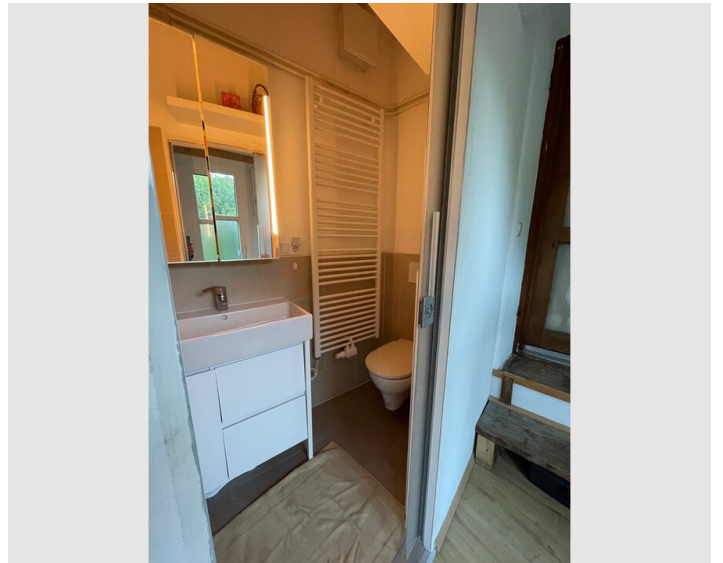
Kitchen

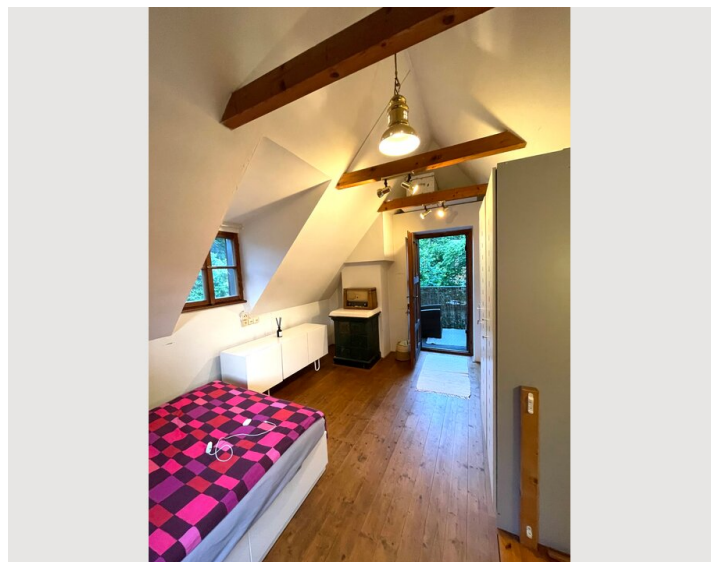
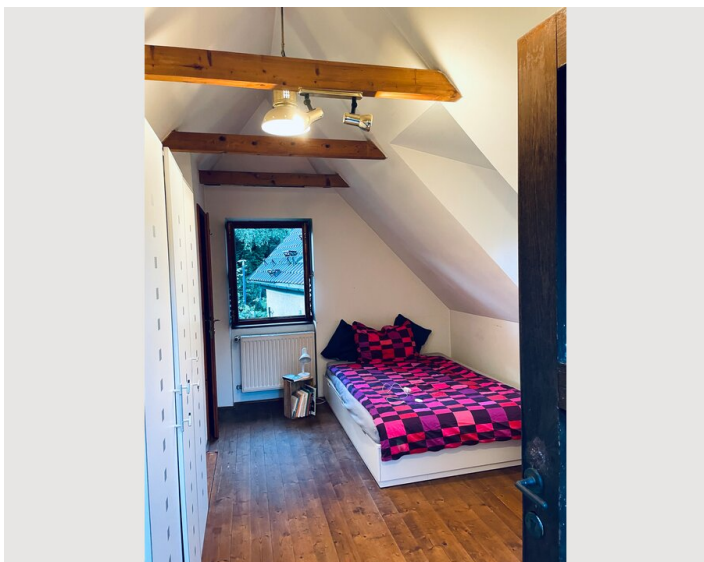
- Private kitchen
- Glasses/Tableware
- Dishwasher
- Cooking utensils
- Espresso machine

Informations

- Suitable for children
- Desk/Workplace
- Pets on request
- Smoking not allowed
- Private entrance
- Regular cleaning at extra cost


Picture gallery







Infrastructure

 Line 6, 10, 12, 7, 160

 Supermarket, pharmacy, bakery, bank

 15 minutes walk to the city center

 Railwaystation Parsch

The area offers excellent infrastructure, combining urban convenience with a peaceful residential setting. Shops, including supermarkets and specialty stores, are within easy reach, along with cafés and restaurants. Public transport, nearby schools, and medical practices ensure excellent connectivity and everyday convenience.

Location

