



HOUSE, 6850 DORNBIRN

House Kehlegg

Object number: RHSV1

[View and rent online](#)

Period	06/12/2025 - 06/01/2026
Number of persons	2
Total incl. VAT.	€ 2.416,90
Security deposit	€ 1.800,00

The house is located in the mountain village of Kehlegg at 800m above sea level above Dornbirn in the Vorarlberg Rhine Valley. We are located in the border triangle of Liechtenstein, Switzerland and Germany on the beautiful Lake Constance.



Living space

72m²



Maximum occupancy

2 Persons



Complete accommodation [?]

1 Private bathroom 1 Separated bedroom 1 Living-Sleepingroom



Ground floor



Check-in

14:00 - 20:00 Clock



Check-out

07:00 - 10:00 Clock

Sleeping options

Sleeping room



1x Double bed (1,80 m x 2 m)

Living and sleeping



1x Single bed

Descripton of accommodation

The 72m² house is divided into 2 floors. Directly at the entrance to the house is the kitchen with a sitting area. The spacious bedroom with a desk and wardrobe is also on the ground floor. Washing machine and toilet can also be found in the lower area. A cozy Swedish stove provides pleasant warmth in the cold season. A warm wooden staircase leads to the second floor. This is where the spacious living area of the house is located. The panoramic window offers a great view of the mountains. A small but nice bathroom is also located on the second floor.

A small garden directly in front of the house allows you to enjoy the warm summer days outside.

Equipment & Features



Basic equipment

- Garden
- TV
- Bedclothes
- Private toilet
- Vacuum cleaner
- Hairdryer
- Internet/Wifi
- Private washing machine
- Towels
- Private parking space
- Cleaning utensils



Fireplace

- Charcoal grill



First supply

- Toilet paper
- Nespresso capsules
- Soap



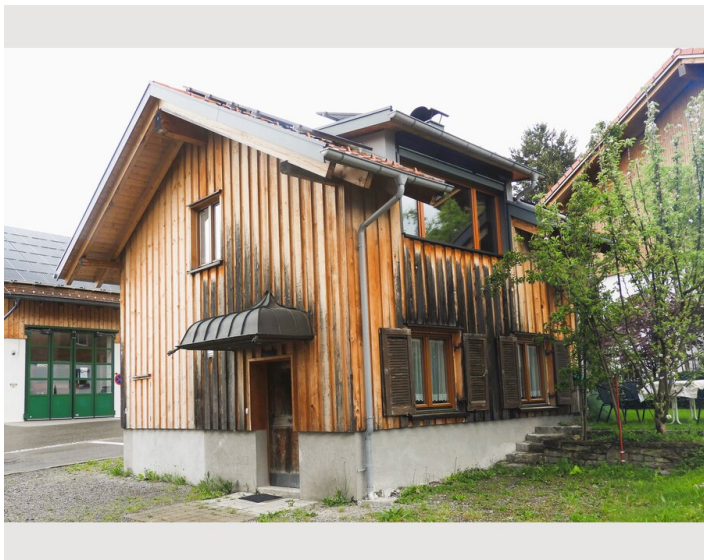
Kitchen

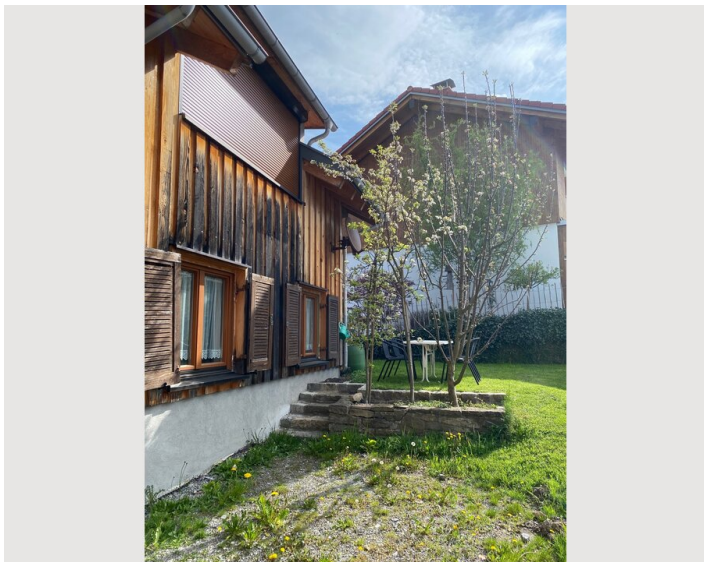
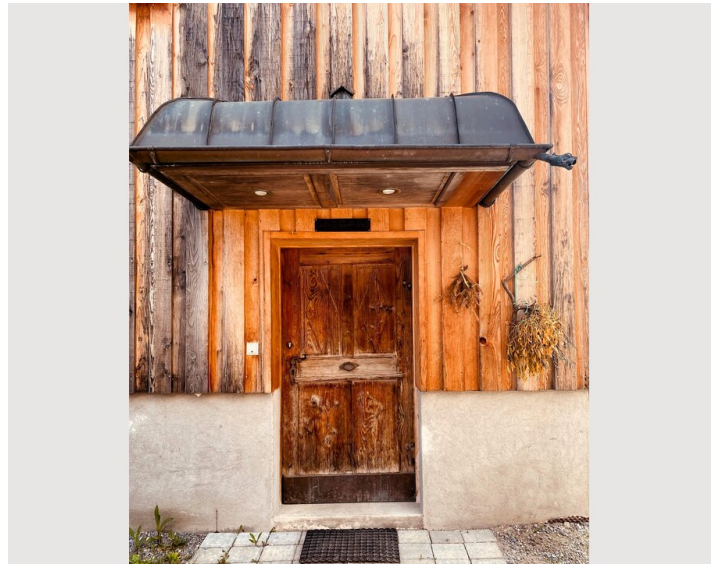
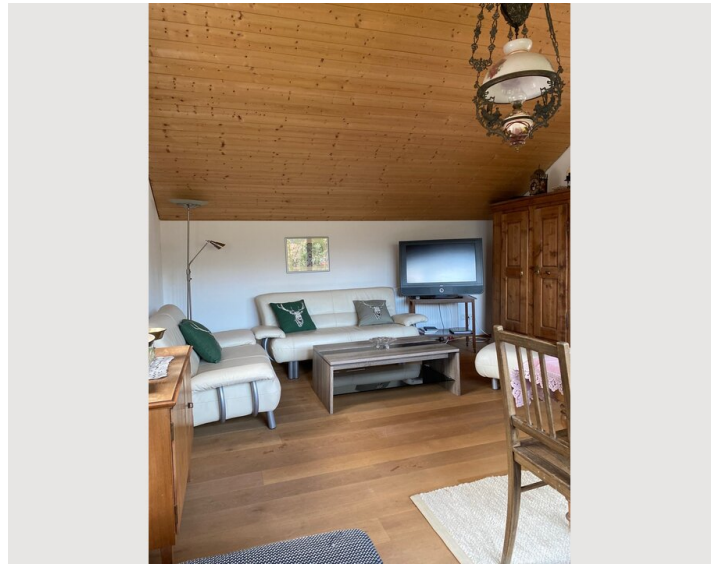
- Private kitchen
- Glasses/Tableware
- Dishwasher
- Cooking utensils
- Espresso machine
- Microwave

Informations

- Suitable for construction workers
- Smoking not allowed
- Desk/Workplace
- Pets forbidden
- Suitable for children
- Free short-term parking zone
- Private entrance
- Regular cleaning at extra cost


Picture gallery







Infrastructure

 bus transfer every half an hour

Directly from the house you can enjoy the most beautiful mountain hikes and mountain bike routes. The best ski resorts are located in the immediate vicinity. Our local mountain, the Bödele, can be reached in just half an hour. The Bregenzerwald or Montafon ski areas can be reached in an hour's drive. Waldbad Enz, indoor swimming pool, the largest Rolls Royce Museum in the world, Rappenloch Gorge, Inatura Museum, Karrenseilbahn, mountain biking, excursions to Lake Constance are very easy to reach by bus. The bus stop is in the immediate vicinity. Unfortunately, there is no supermarket in Kehlegg, but there are some farmers who sell their own products from the farm. Every Tuesday, Thursday and Saturday from 08:30 there is a salesman on site and sells various food. Two restaurants are within walking distance.

Location

