



2 ROOM APARTMENT, 1100 VIENNA

1100: 1-BR-Apartment with Garden at HBF

Object number: JL-1100-GG-3-1

[View and rent online](#)

Period	20/12/2025 - 20/01/2026
Number of persons	2
Total incl. VAT.	€ 2.750,47
Security deposit	€ 2.000,00

The new, modernly furnished apartment near the main train station is located on the ground floor facing the inner courtyard.



Living space

56m²



Maximum occupancy

3 Persons



Complete accommodation [?]

1 Private bathroom 1 Separated bedroom 1 Living-Sleepingroom



Ground floor

Elevator available



Check-in

15:00 - 23:59 Clock



Check-out

00:01 - 11:00 Clock

Sleeping options

Sleeping room



1x Double bed (1,80 m x 2 m)

Living and sleeping



1x Sofa bed (1 person)

Descripton of accommodation

3D-tour of that apartment:

<https://my.matterport.com/show/?m=4V76QUkD4Vd>

The new, modernly furnished apartment near the main train station is located on the ground floor facing the inner courtyard. Completely shielded from street noise, it presents itself as an oasis of calm in the city. It has approximately 56m² of living space and an approximately 36m² private garden.

It consists of an anteroom, bathroom with walk-in shower, separate toilet, storage room, kitchen-diner, bedroom and private garden.

Fully and modernly furnished with custom-made carpenter furniture: fitted kitchen (Siemens appliances) including kitchen utensils and dishes, washing machine in the bathroom, flat-screen TV, high-speed internet.

Equipment & Features



Basic equipment

- Terrace
- Garden
- TV
- Bedclothes
- Private toilet
- Vacuum cleaner
- Cleaning utensils
- Loggia
- Internet/Wifi
- Private washing machine
- Towels
- Aircondition
- Iron & ironing board
- Hairdryer



First supply

- Toilet paper
- Nespresso capsules
- Soap
- Fridge filling on request



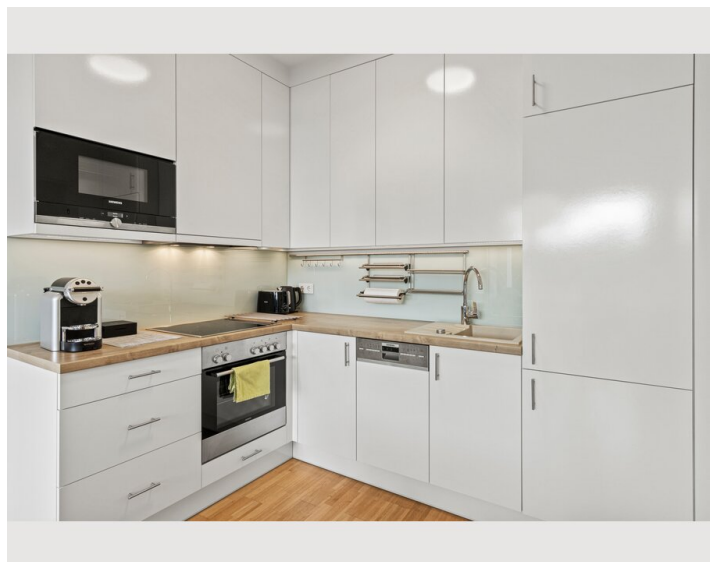
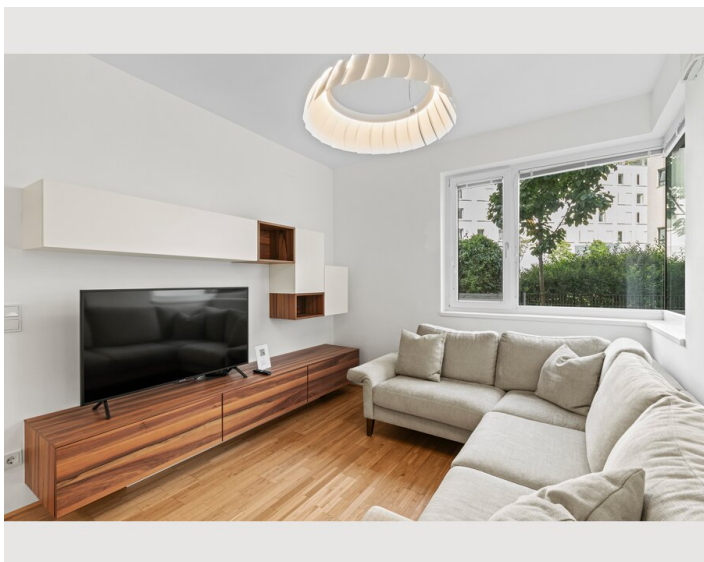
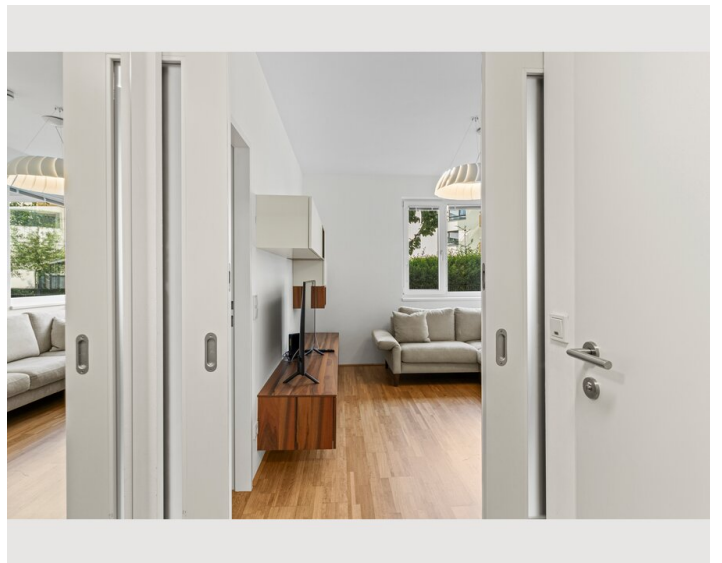
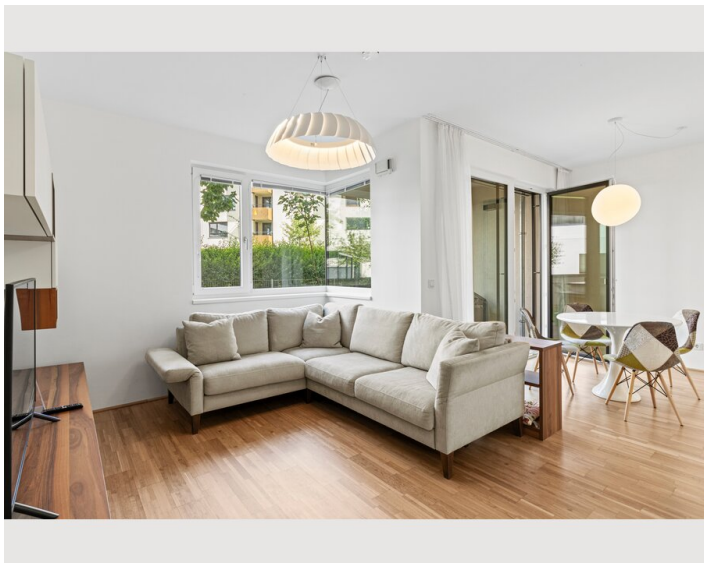
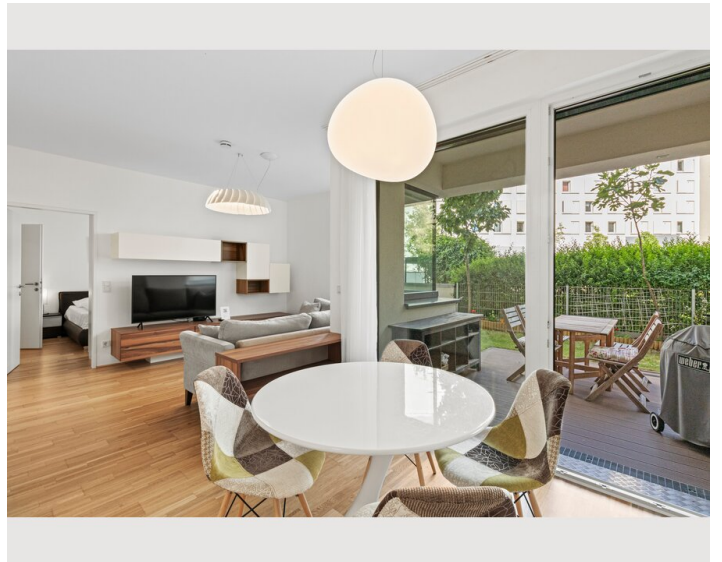
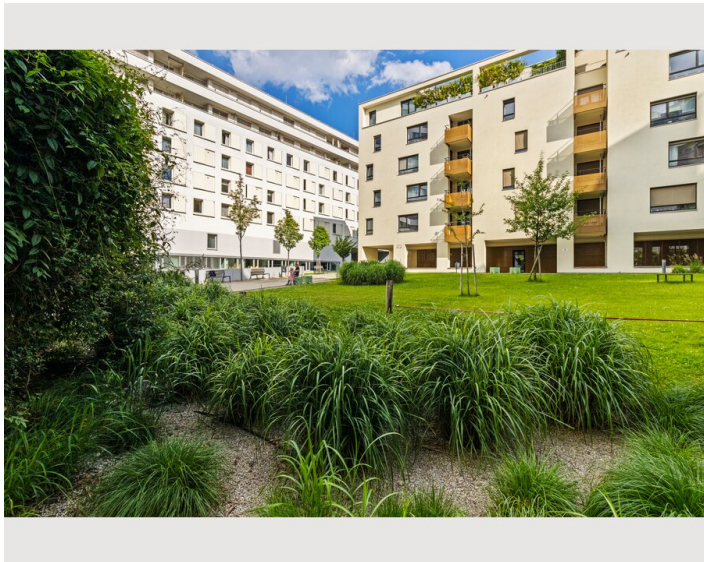
Kitchen

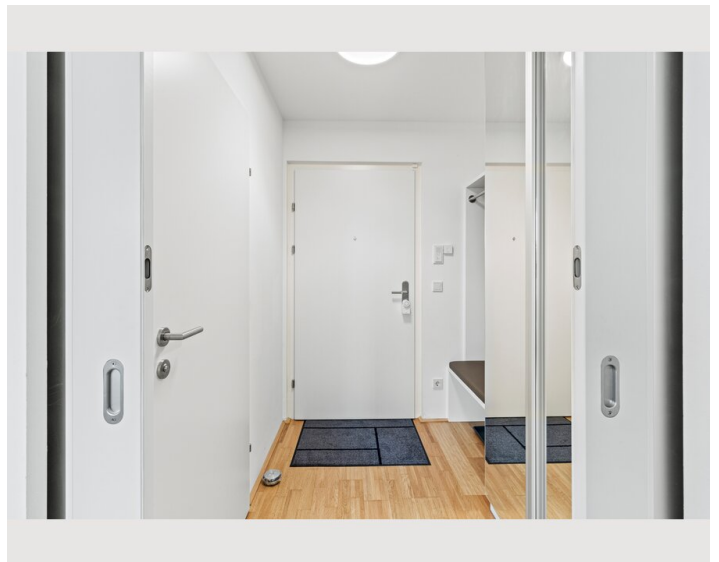
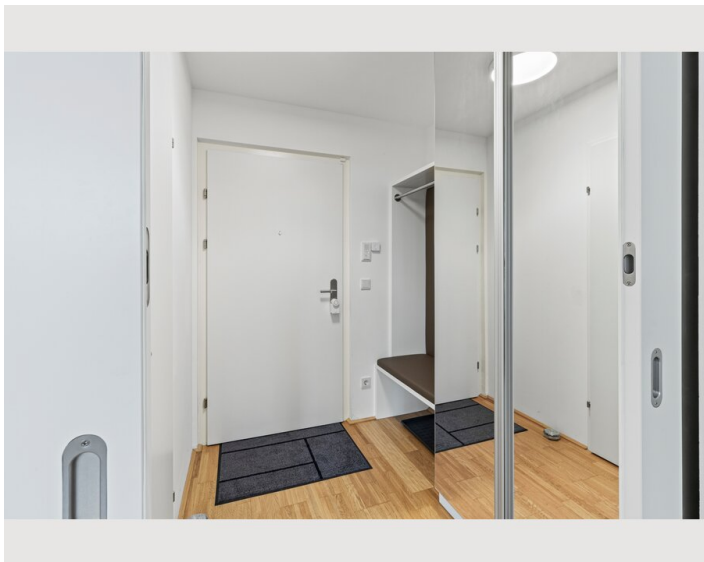
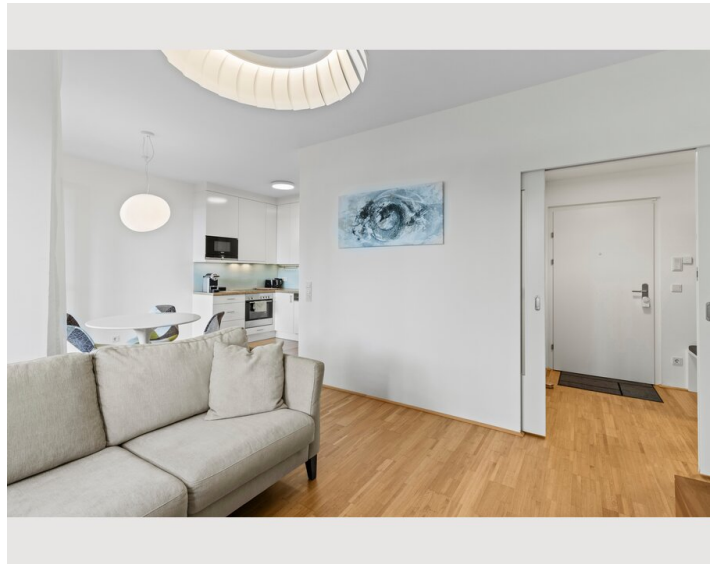
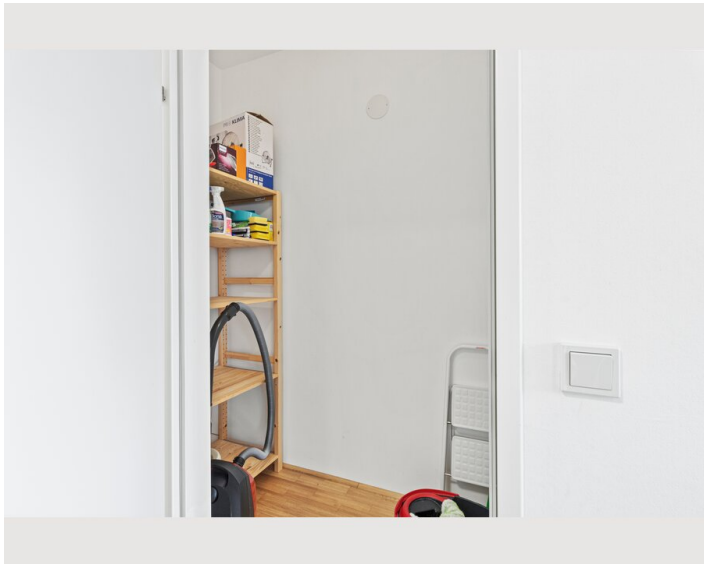
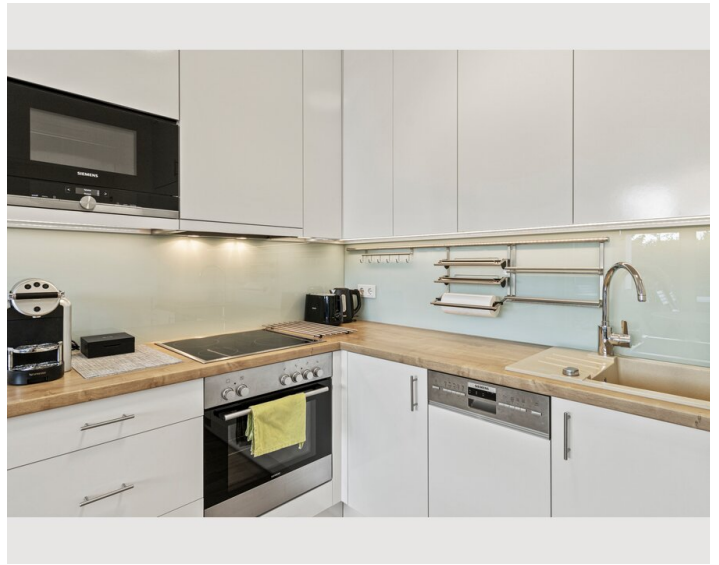
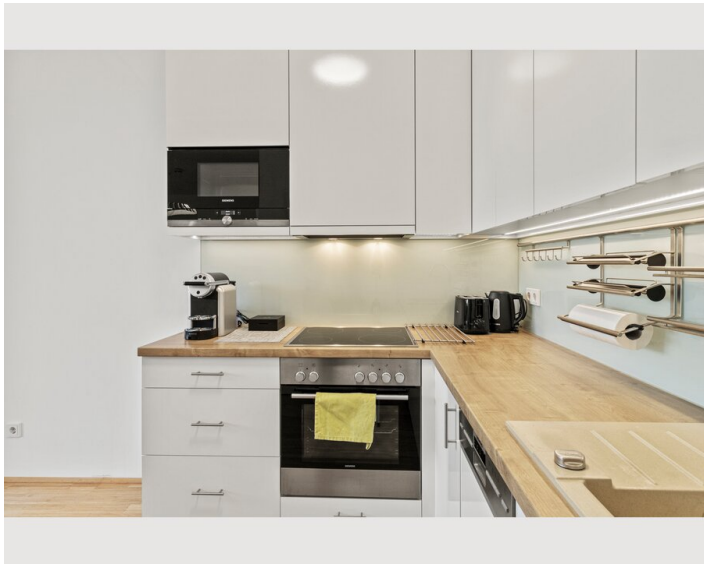
- Private kitchen
- Glasses/Tableware
- Dishwasher
- Cooking utensils
- Espresso machine
- Microwave

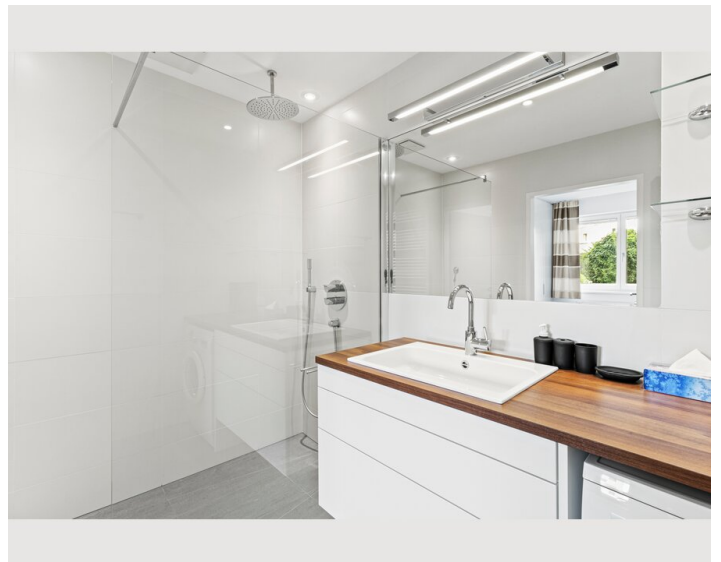
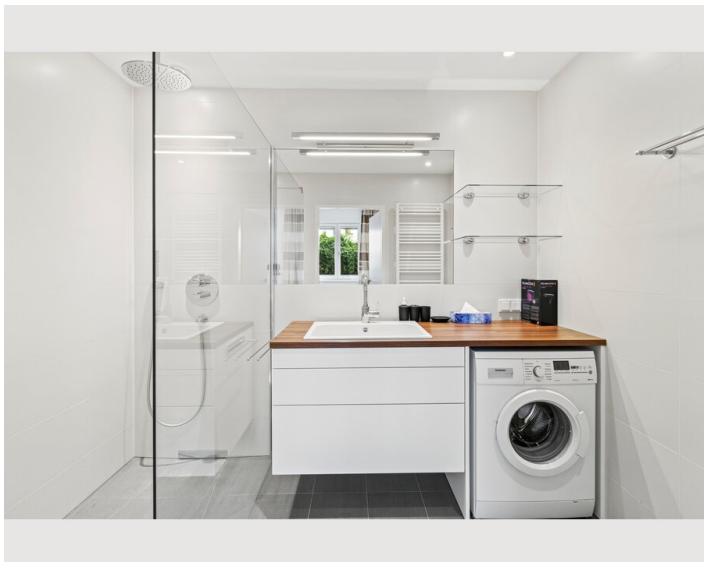
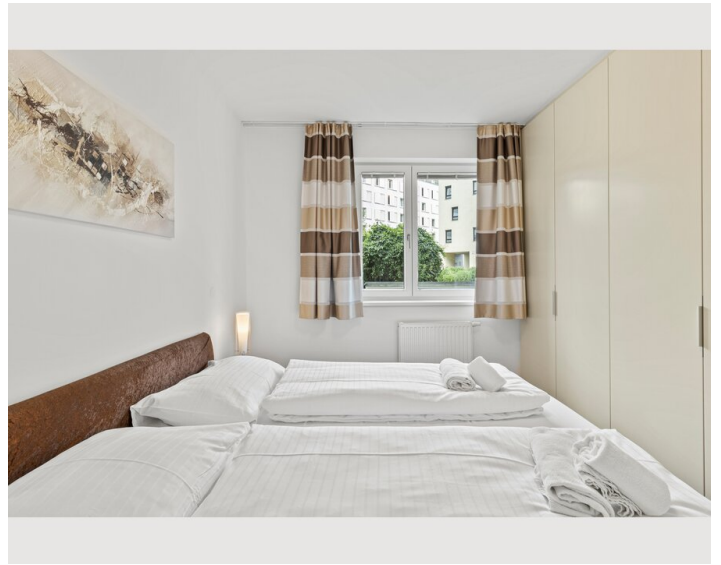
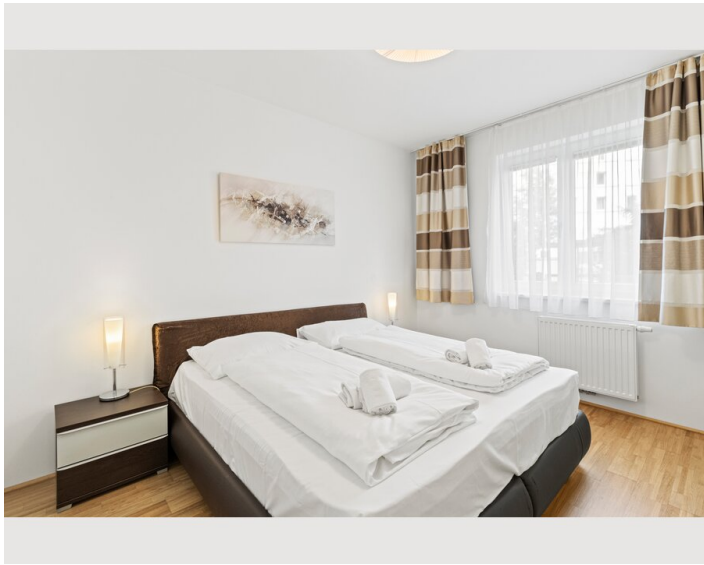
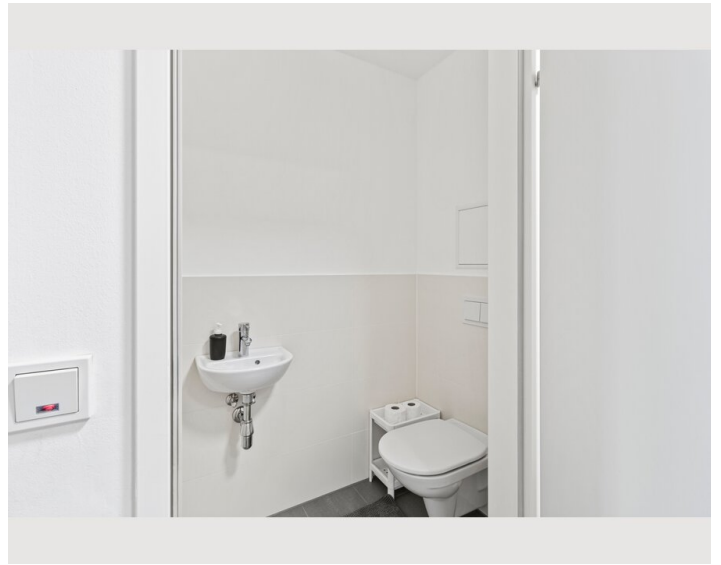
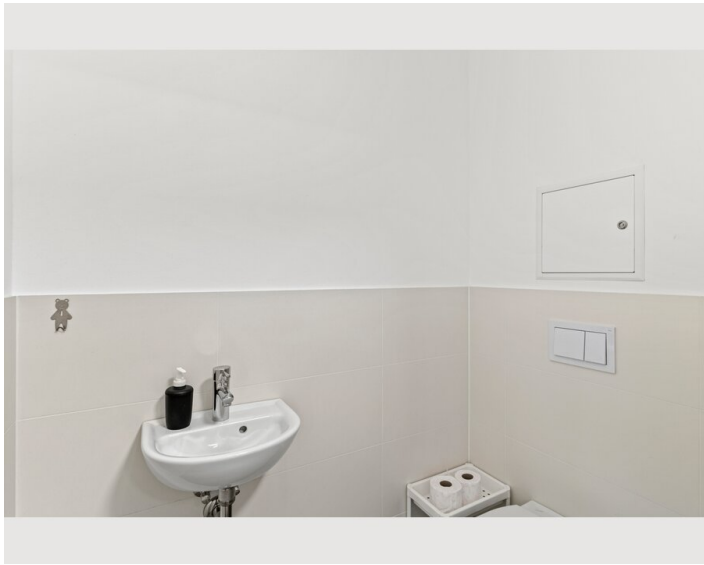
Informations

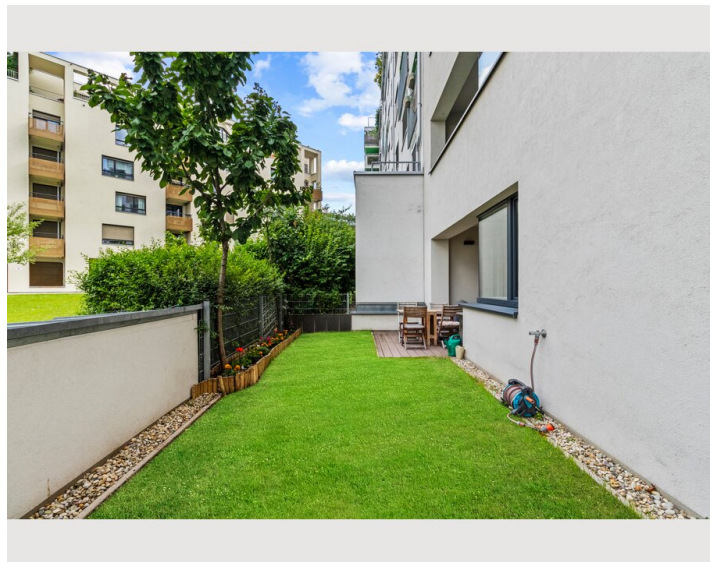
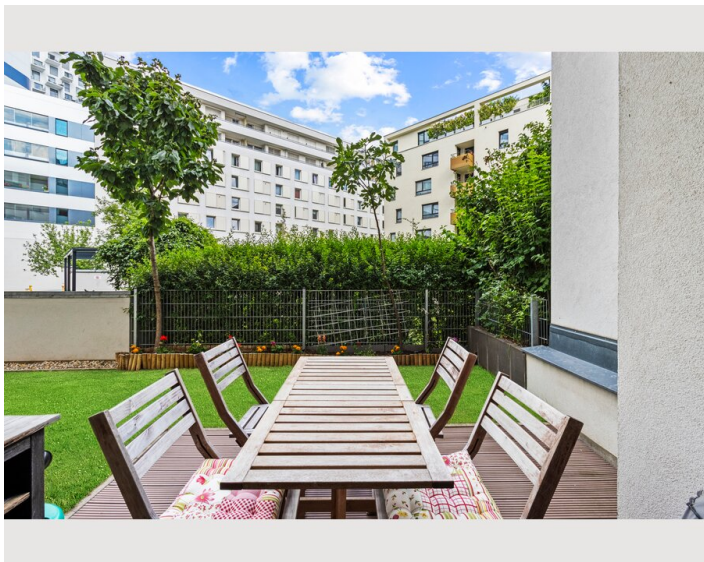
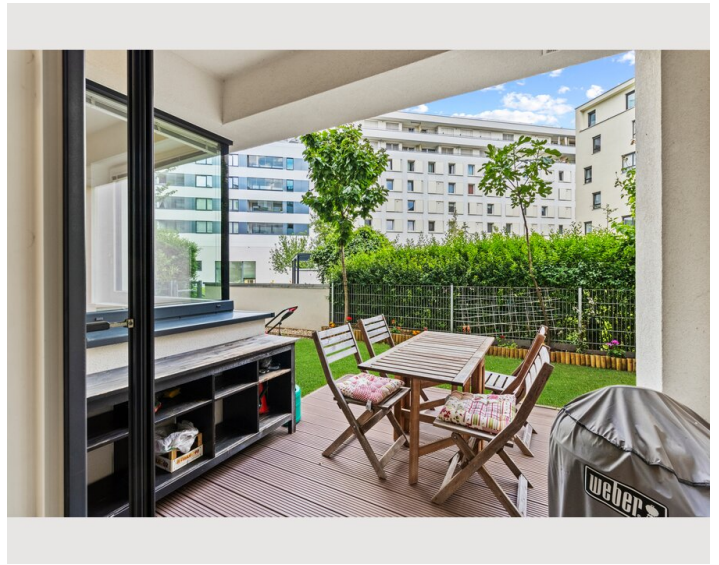
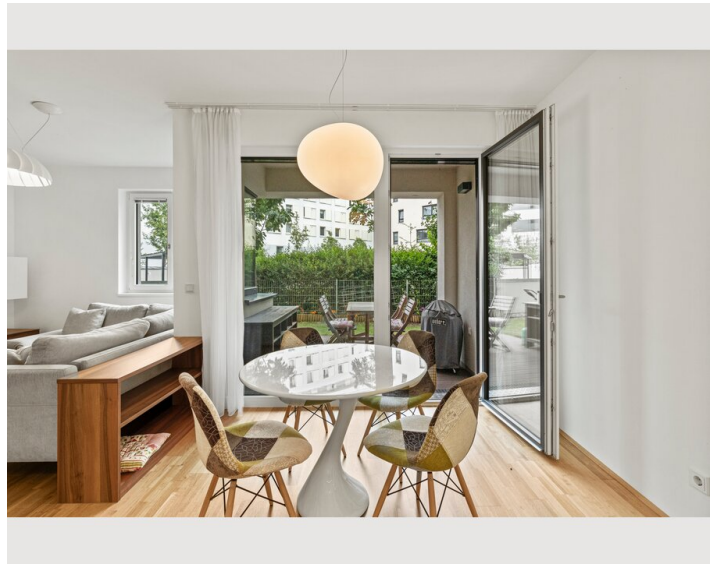
- Suitable for children
- Short-term parking zone subject to a charge
- Pets on request
- Bicycle room free of charge
- Smoking not allowed
- Desk/Workplace
- Regular cleaning at extra cost

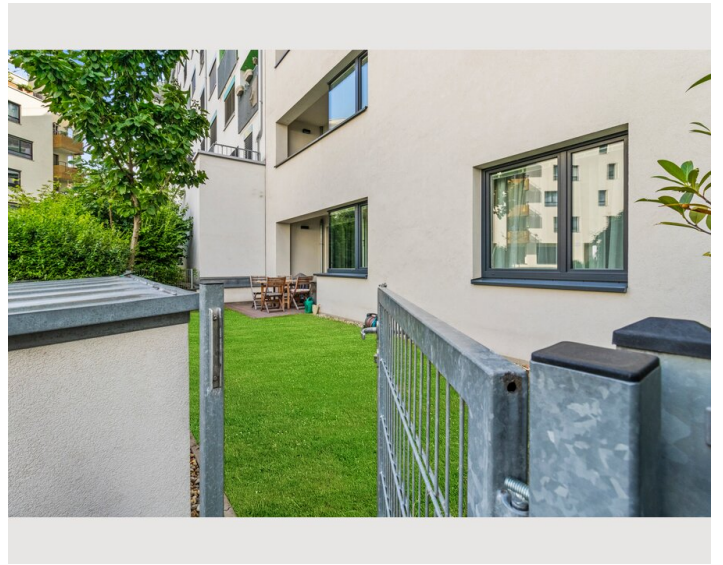
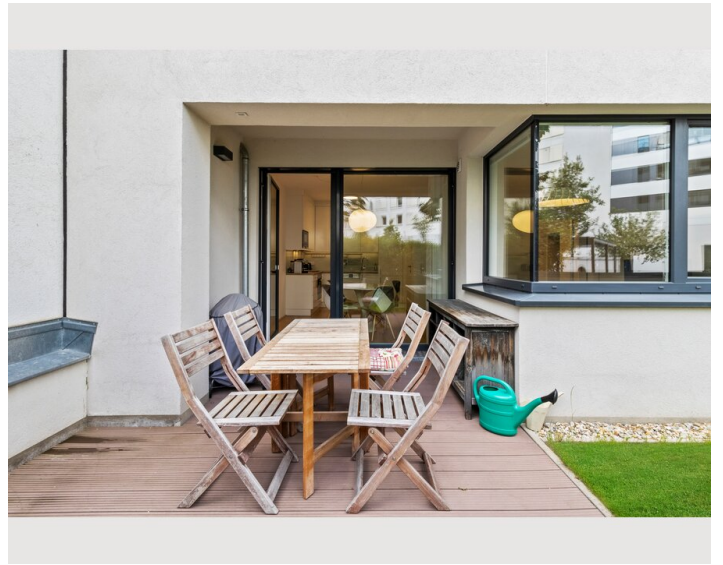
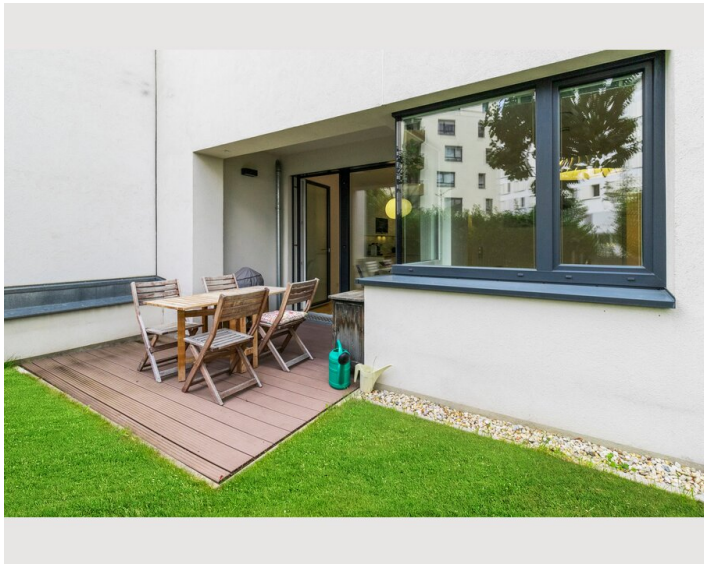
Picture gallery















Infrastructure

 ca. 100m

 ca. 2km

 ca. 100m

 ca. 15km

All daily amenities such as a large supermarket and shopping center with a wide range of restaurants are in the immediate vicinity in the BahnhofCity main train station.

Just a few minutes' walk away, the Schweizergarten and the Helmut Zilk Park invite you to stroll and linger.

A cycle route leads from the building directly to the center of Vienna within 10 minutes.

The main train station is also just a few minutes' walk away. The U1 subway line, express trains, tram lines 18, O, D, bus lines 13A, 69A and regional bus lines run there.

Vienna Airport can be reached from the main train station by train (ÖBB) in around 15 minutes or by bus (Vienna Airport Lines).

The nearby Landstraßer Gürtel junction provides direct access to the higher-level road network (A23).

Location

