



3 ROOM APARTMENT, 6103 REITH BEI SEEFELD

Little Mountain Monarch

Object number: KBM

[View and rent online](#)

Period	05/04/ - 05/05/2026
Number of persons	2
Total incl. VAT.	€ 2.296,55
Security deposit	€ 1.700,00

Enjoy a great time with the whole family or friends in our stylish accommodation, with a fantastic view of the Inn Valley and the low mountain range. Our Kleiner Bergmonarch is located on the sunny Seefeld high plateau in the Karwendel mountains



Living space

63m²



Maximum occupancy

5 Persons



Complete accommodation [?]

1 Private bathroom 2 Separated bedrooms 1 Living-Sleepingroom



1. floor



Check-in

15:00 - 23:00 Clock



Check-out

05:00 - 10:00 Clock

Sleeping options

Bedroom 1



1x Double bed (1,60 m x 2 m)

Bedroom 2



1x Double bed (1,60 m x 2 m)



1x Single bed

Living & Sleeping



1x Double bed (1,60 m x 2 m)

Descripton of accommodation

Our stylishly furnished apartment has a bedroom behind the living room, with a 1.60 m wide double bed. The room can be partitioned off with a curtain.

Our well-equipped country house kitchen has the dining area incorporated. You can also use the covered terrace or the garden outside.

The bathroom, with a large shower, has a washing machine included.

We have also included space for children or additional guests - the entrance area has a pull-out double bed, which can also be separated by a curtain, and there is another bed in the study.

In your own small study, you have peace and quiet from the hustle and bustle and can use the bed to sit or rest.

In front of the apartment there are 2 parking spaces in a row and a ski and bicycle shed.

We also provide Joy Gosny's bike.

Equipment & Features



Basic equipment

- Terrace
- Internet/Wifi
- Private washing machine
- Towels
- Private parking space
- Iron & ironing board
- Hairdryer
- Garden
- TV
- Bedclothes
- Private toilet
- Vacuum cleaner
- Cleaning utensils



Kitchen

- Private kitchen
- Glasses/Tableware
- Dishwasher
- Cooking utensils
- Espresso machine

Informations

- Suitable for children
- Desk/Workplace
- Pets on request
- Bicycle room free of charge
- Smoking not allowed
- Private entrance
- Regular cleaning at extra cost

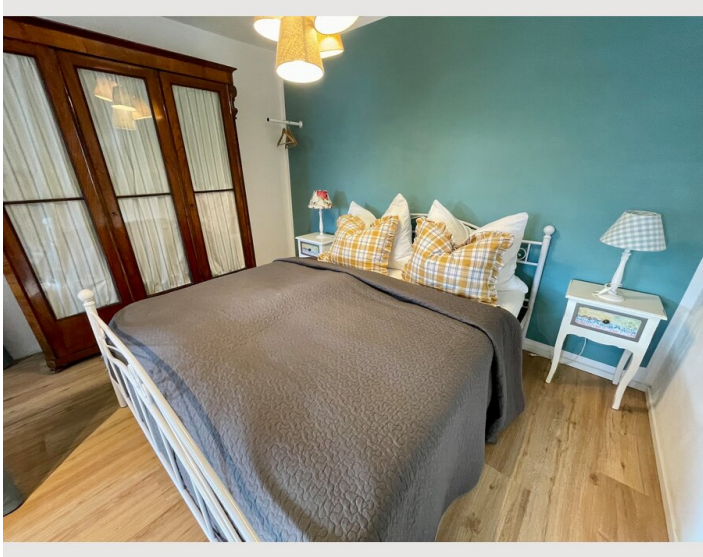
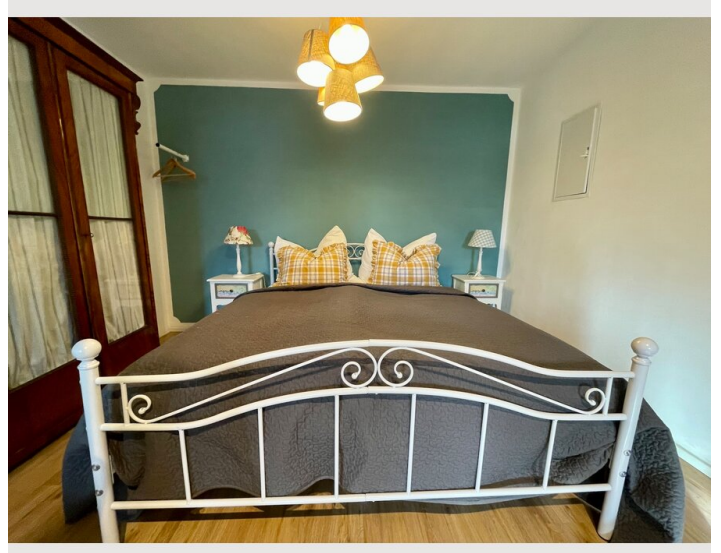
Additional services

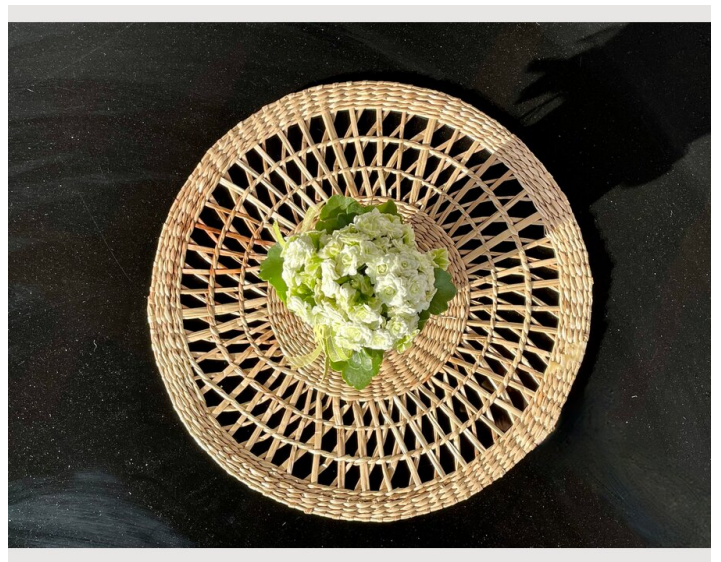
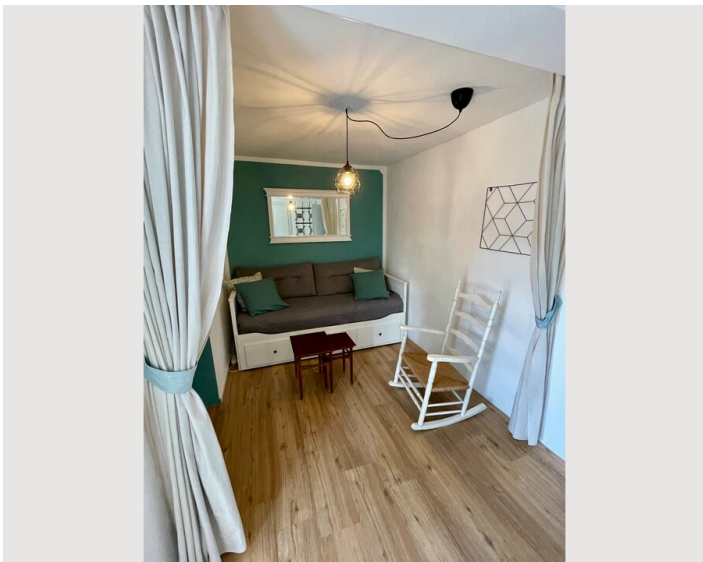
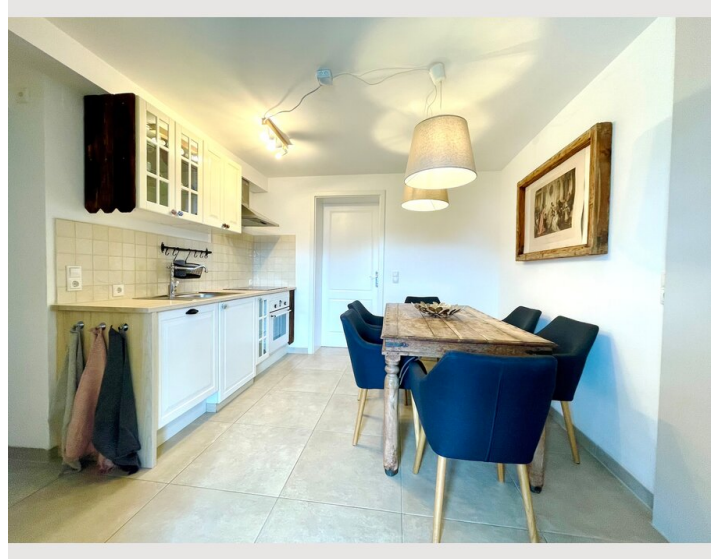
- Bike (€ 1,00)
- Domestic animal (€ 200,00)

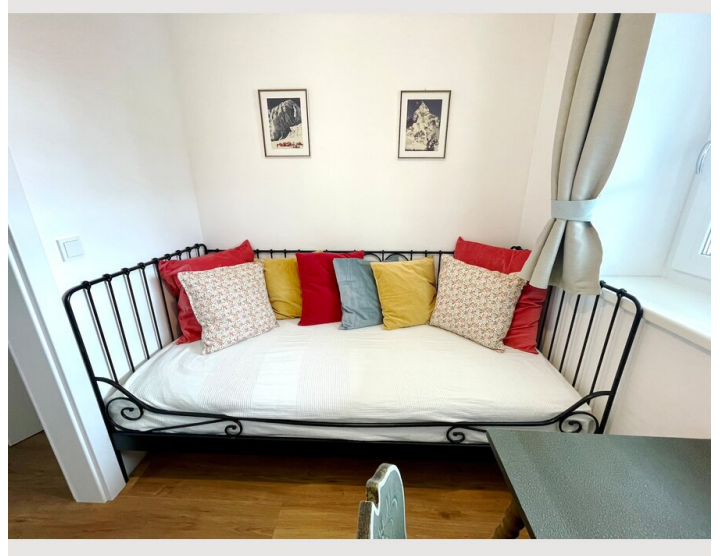
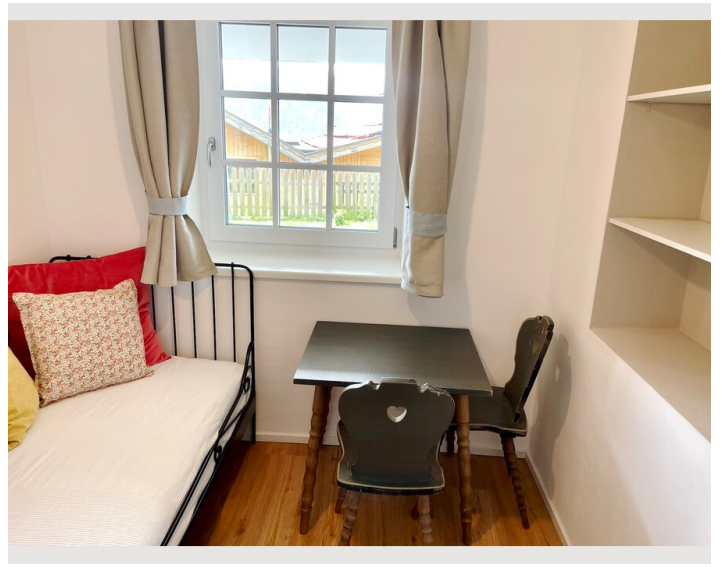
All prices are gross per month - billing is done directly with the lessor.

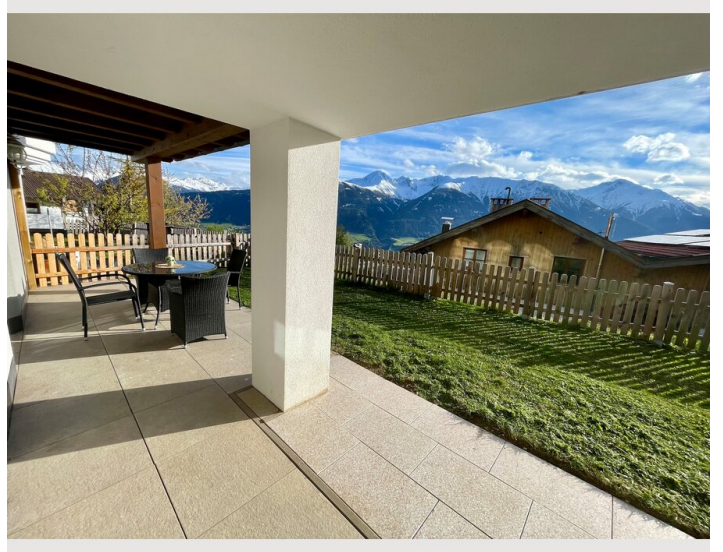
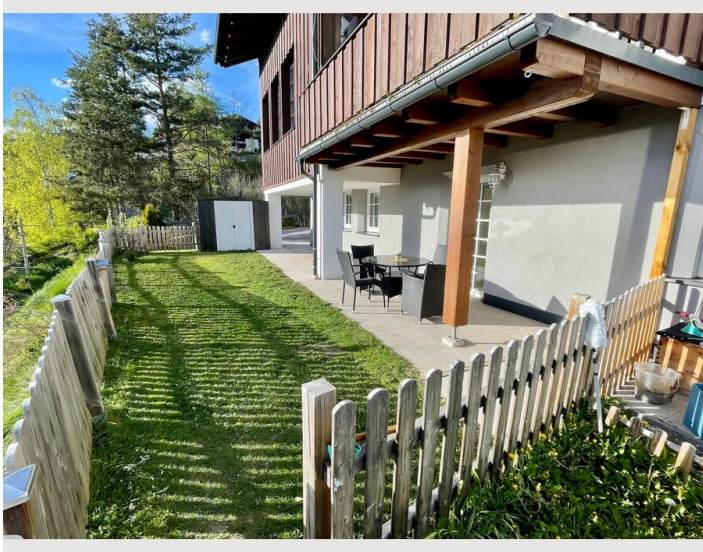
Picture gallery



















Infrastructure

-  10 minutes walk to Reither train station. Travel time to Innsbruck approx. 25 minutes.
-  Local bus service for the entire Seefeld plateau right in front of the house.
-  Reith has a café with a bakery, a bank and a hairdresser's within a 5-minute walk.
-  Seefeld (5km away) is a tourist center and offers stores, shopping facilities, restaurants, several ski slopes, a swimming pool and much more...
-  Innsbruck Airport (INN) approx. 20 minutes away by car.
-  The nearest grocery stores are around 4-5 km away (you can buy small items in stores in Reither)

Our small mountain monarch is located on the edge of the Karwendel mountains and offers many opportunities for local recreation. However, it is only a 25-minute drive (or train ride) to the center of Innsbruck. The airport and the university campus are even easier to reach as they are located to the west of Innsbruck. Reith is a quiet little village, but in the neighboring town of Seefeld (approx. 5 km away) you will find everything from extensive shopping facilities, stores, restaurants and cafés to swimming pools and saunas, as well as extensive ski and cross-country ski slopes. In the nearby Karwendel and Wetterstein mountains you can go hiking, mountain biking and visit rustic huts. A beautiful place to live in both summer and winter.

Location

