

STUDIO APARTMENT, 5242 ST. JOHANN AM WALDE

Little but fine

Object number: Eiche

[View and rent online](#)

Period	08/07/ - 08/08/2025
Number of persons	2
Total incl. VAT.	€ 915,94
Security deposit	€ 700,00

The small apartment is one of two on the ground floor of a single-family house. Located at the entrance to the Kobernausserwald, the accommodation offers numerous opportunities for leisure, as well as making everyday working life healthy and fun!



Living space

20m²



Maximum occupancy

1 Person



Complete accommodation ?

1 private bathroom 1 Living-Sleepingroom



Ground floor



Check-in

14:00 - 18:00 Clock



Check-out

08:00 - 10:00 Clock

Sleeping options

Living and sleeping



1x Bunk bed

Descripton of accommodation

The apartment is fully furnished, has a television and the necessary kitchen utensils.

However, the apartment is not equipped for cooking as your main activity.

A small, attractive bathroom with shower and toilet is separated from the living room and bedroom, separated by a glass door

You can let the rising sun wake you up, or you darken the windows with blinds and you even oversleep.

washing machine and a refrigerator in a separate niche are used jointly

There is a small shed in the courtyard of the house. Bicycles, motorbikes, etc. can be parked there.

Equipment & Features



Basic equipment

- TV
- Bedclothes
- Private toilet
- Vacuum cleaner
- Cleaning utensils
- Community washing machine
- Towels
- Private parking space
- Iron & ironing board



First supply

- Toilet paper
- Soap
- Fridge filling on request
- shampoo
- Nespresso capsules



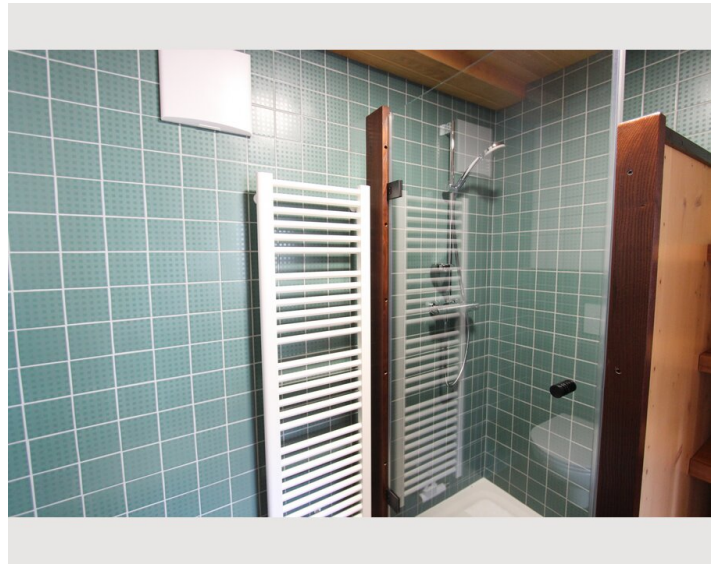
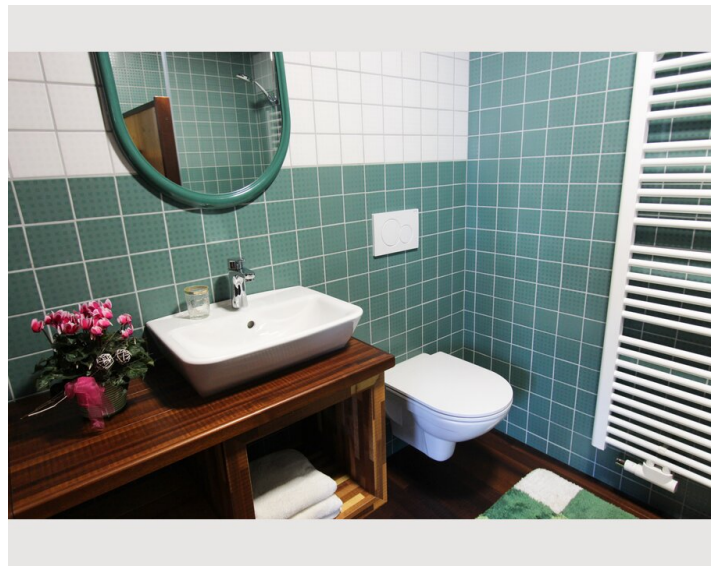
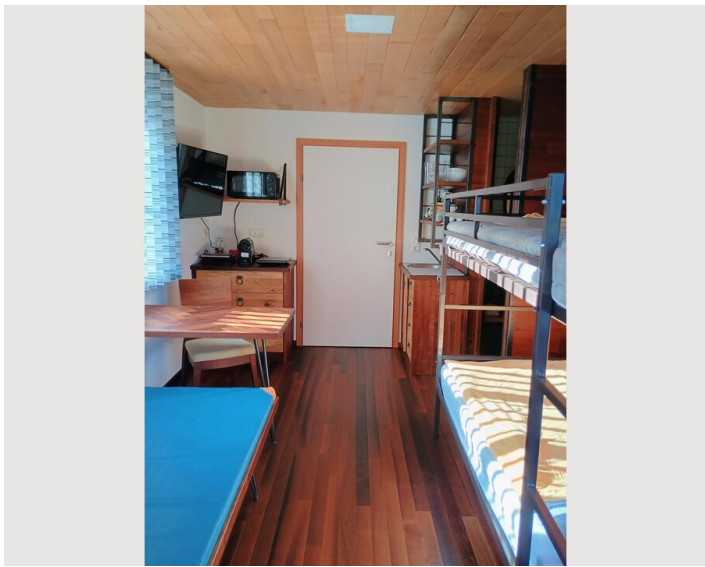
Kitchen

- Kitchenette
- Glasses/Tableware
- Microwave
- Cooking utensils
- Espresso machine

Informations

- Suitable for construction workers
- Private entrance
- Regular cleaning at extra cost
- Smoking not allowed
- Pets forbidden
- Bicycle room free of charge

Picture gallery



Infrastructure



Bus stop is right in front of the house. Supermarket, doctor, bank, hairdresser... are located in the town center, which is approx. 5 km away.

In the Kobernausserwald you can cycle with mountainbike. You can also easily and quickly reach Mattighofen and Munderfing (KTM 12 km each).

Location

