

2 ROOM APARTMENT, 6020 INNSBRUCK

Small Penthouse - Central top-floor apartment with breathtaking views

Object number: 10

[View and rent online](#)

Modern penthouse on the 11th floor in a central location in Innsbruck, next to the Messe train station. Newly built with top amenities, ceiling cooling, excellent parking facilities, and breathtaking views of the city and mountains.

Period	19/12/2025 - 19/01/2026
Number of persons	2
Total incl. VAT.	€ 2.624,52
Security deposit	€ 2.000,00



Living space

50m²



Maximum occupancy

2 Persons



Complete accommodation [?]

1 Private bathroom 1 Separated bedroom



11. floor

Elevator available



Check-in

08:00 - 23:59 Clock



Check-out

06:00 - 23:59 Clock

Sleeping options

Sleeping room



1x Double bed (1,80 m x 2 m)

Descripton of accommodation

Welcome to your dream penthouse in the heart of Innsbruck! This beautiful penthouse is located on the 11th and top floor of a modern new building. The building was completed just last year and is situated right next to the Messe train station and Messe Innsbruck, ensuring perfect connectivity.

The apartment is furnished with top-of-the-line amenities and offers the highest level of comfort. It features ceiling cooling, providing pleasant temperatures even on hot days. Ample parking is available.

A real highlight is the breathtaking view. From here, you can see the entire city and the stunning mountains – a panorama that will take your breath away every day!

Everything you need for a pleasant stay is provided. A television is not currently installed, but we can arrange one upon request depending on the length of your stay.

Equipment & Features



Basic equipment

- Loggia
- Private washing machine
- Bedclothes
- Private toilet
- Aircondition
- Iron & ironing board
- Internet/Wifi
- Private dryer
- Towels
- Garage
- Vacuum cleaner
- Cleaning utensils



First supply

- Toilet paper
- Soap
- shampoo
- Fridge filling on request



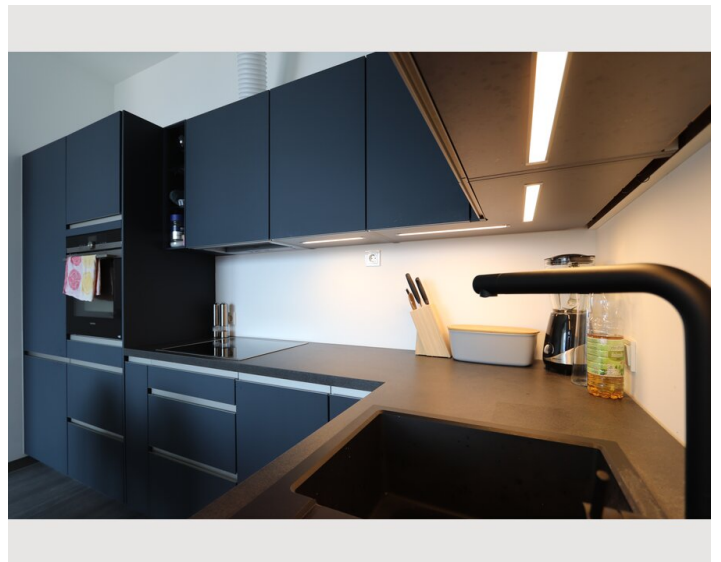
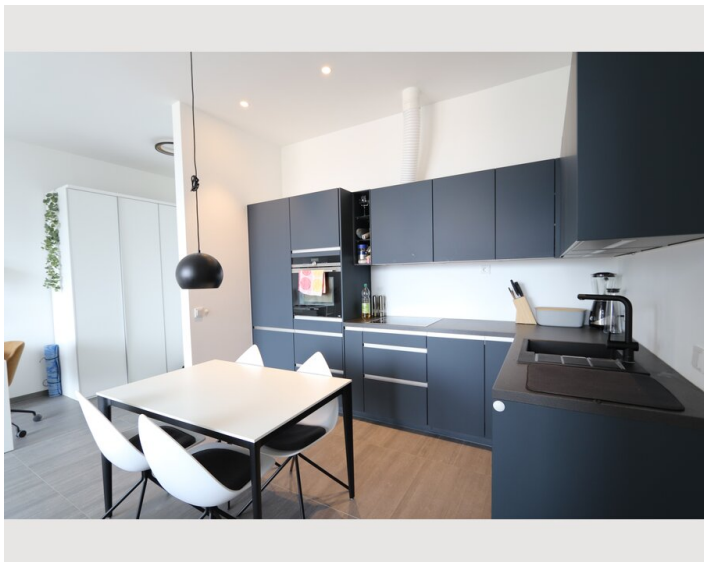
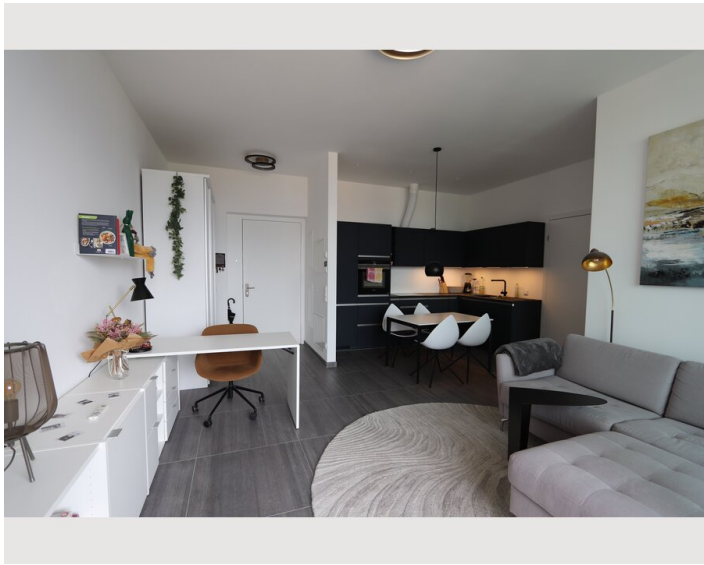
Kitchen

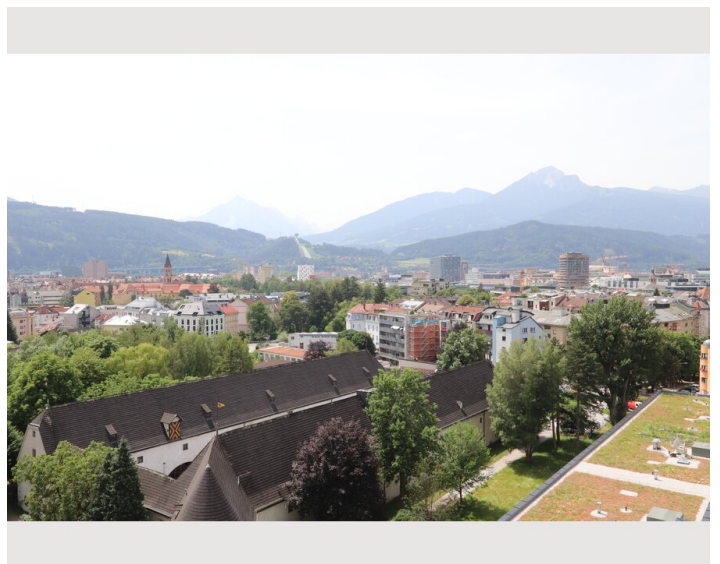
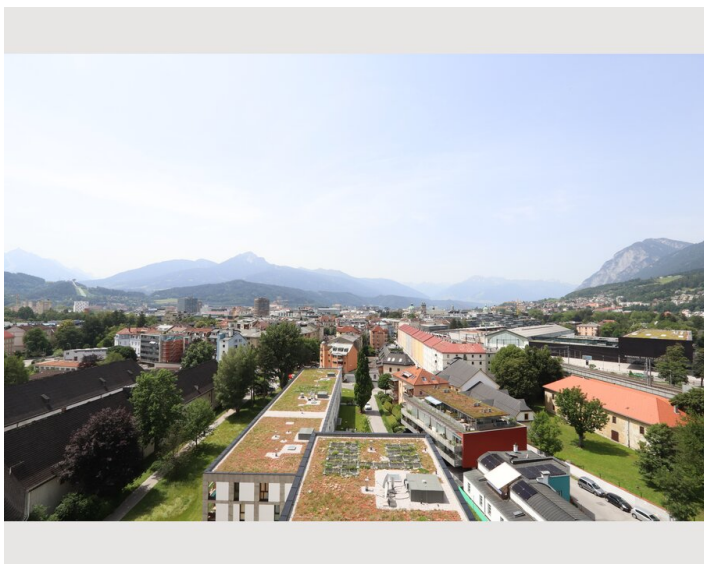
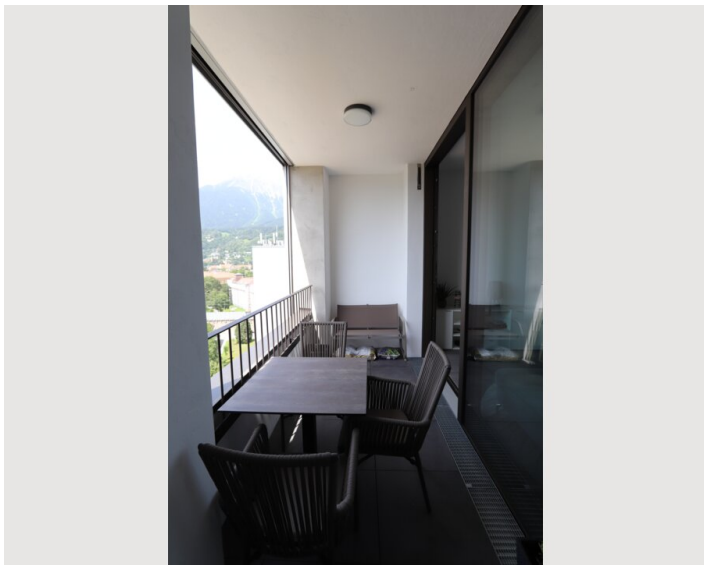
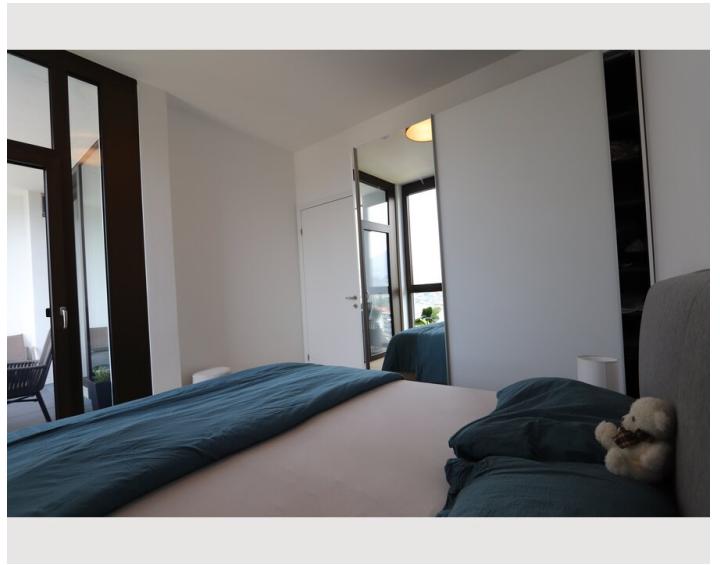
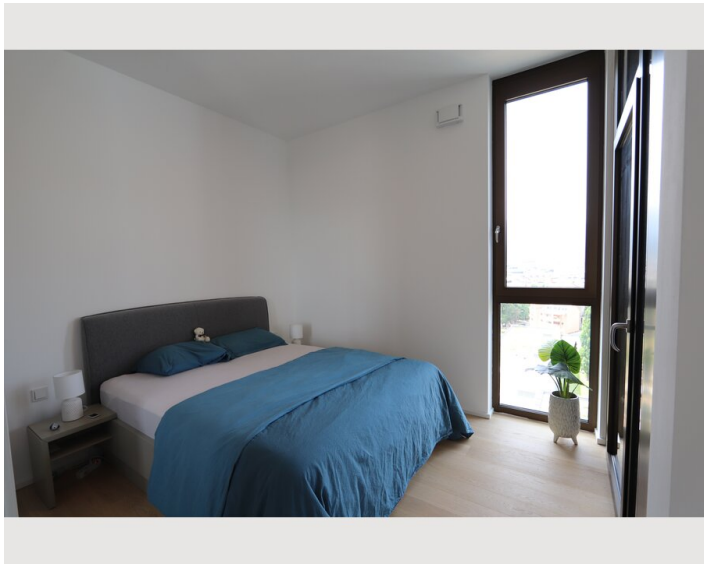
- Private kitchen
- Glasses/Tableware
- Dishwasher
- Cooking utensils
- Filter coffee
- Microwave

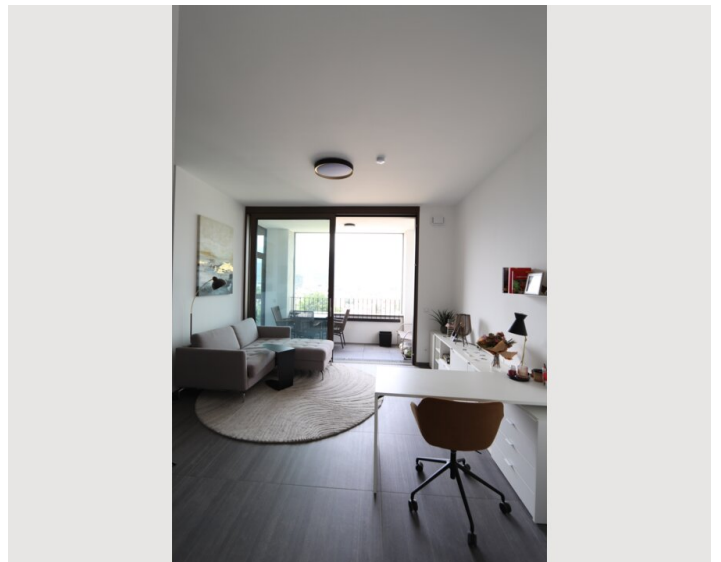
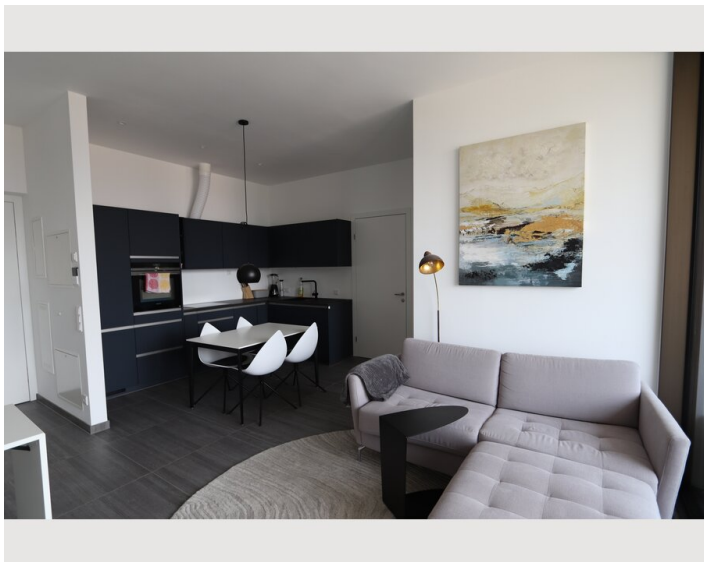
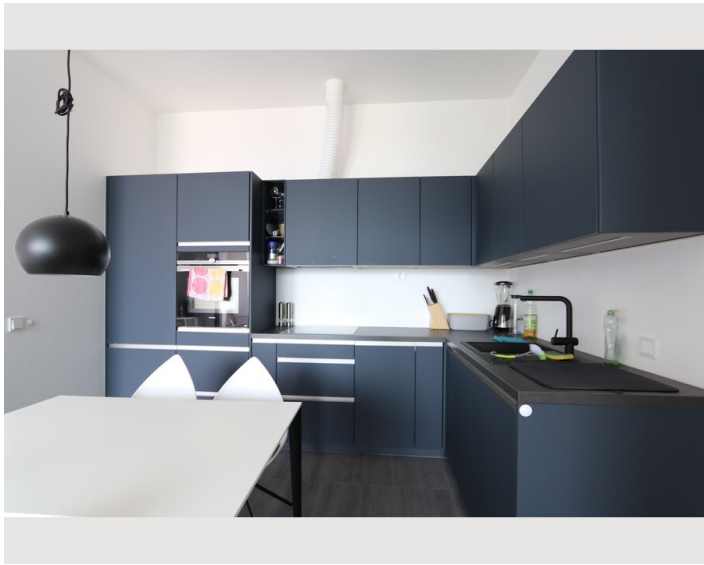
Informations

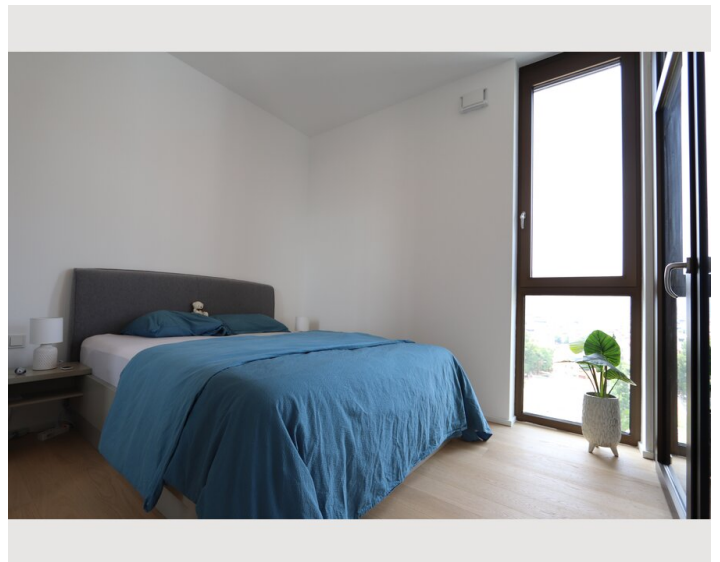
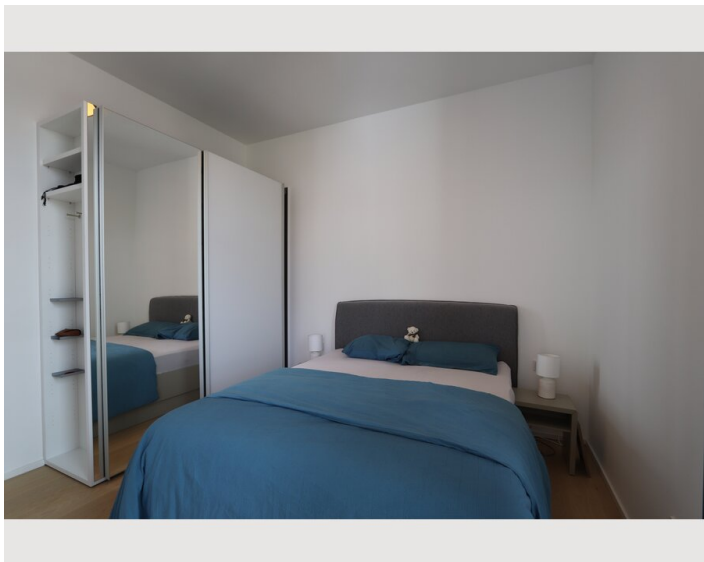
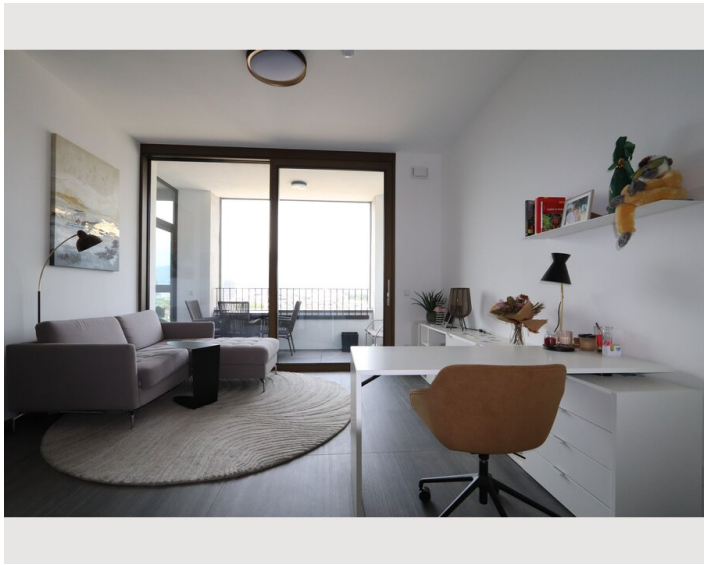
- Smoking not allowed
- Desk/Workplace
- Pets on request
- Free short-term parking zone
- Private entrance
- Bicycle room free of charge

Picture gallery
















Infrastructure

 2-minute walk

 Easily accessible by bus

 2-minute walk

 2-minute walk

 10-minute walk

Right next to the Zeughaus

Right next to the river (Sill)

Messe: 3-minute walk

Bus connection

University of Sowi: 8-minute walk

Leisure activities like billiards: within walking distance

Beautiful walking path and adjacent park: quickly reachable on foot

Shopping options

Restaurants

Location

