



STUDIO APARTMENT, 1030 VIENNA

Charming studio by the city center

Object number: KBHC1

[View and rent online](#)

Stylish small apartment situated by the famous Hundertwasserhaus in an elegant Art Nouveau building. Completely renovated in 2023. Great location with 20 min walk to the Stephansplatz, 5 min walk to the metro and train station Wien Mitte/Landstrasse.

Period	25/06/ - 25/07/2026
Number of persons	2
Total incl. VAT.	€ 1.703,44
Security deposit	€ 1.300,00



Living space

30m²



Maximum occupancy

2 Persons



Complete accommodation [?]

1 Private bathroom 1 Living-Sleepingroom



1. floor

Elevator available



Check-in

15:00 - 22:00 Clock



Check-out

07:00 - 12:00 Clock

Sleeping options

Living & Sleeping



1x Double bed (1,60 m x 2 m)



1x Sofa bed (1 person)

Description of accommodation

The studio is divided into an entrance area, separate kitchen and living room with comfortable double bed and sleeping couch. The kitchen is fully equipped, including dishwasher or espresso maker.

The bathroom with shower has new washing machine with drying option.

The studio is overlooking the courtyard of the building and is very quite. The location offers many amenities and walking distance to the city center, being though in a very calm street with minimum noise.

Equipment & Features



Basic equipment

- Internet/Wifi
- Private washing machine
- Bedclothes
- Private toilet
- Iron & ironing board
- Hairdryer
- TV
- Private dryer
- Towels
- Vacuum cleaner
- Cleaning utensils



First supply

- Toilet paper
- Soap
- shampoo
- Nespresso capsules



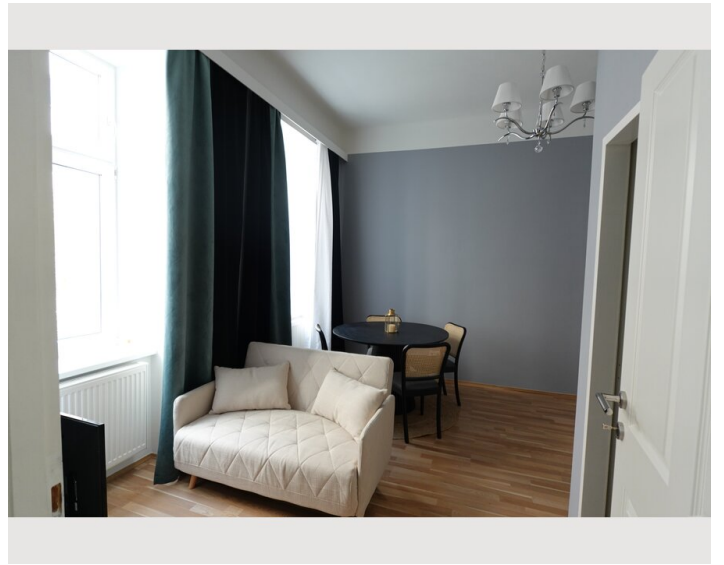
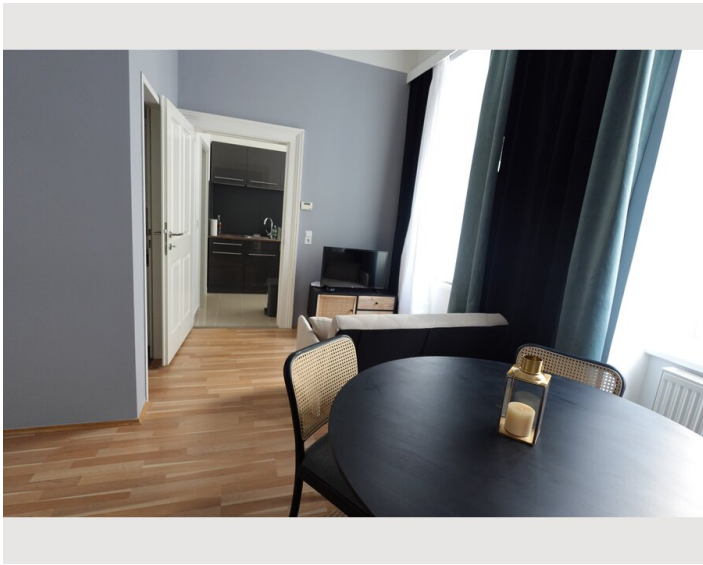
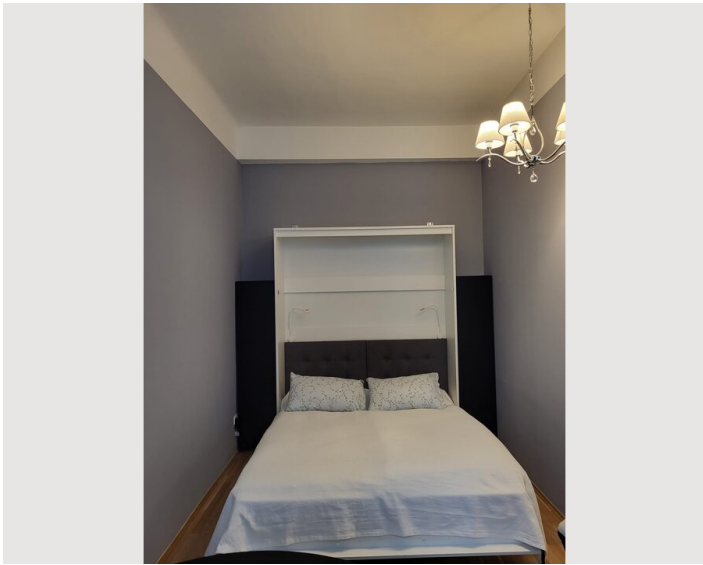
Kitchen

- Private kitchen
- Glasses/Tableware
- Dishwasher
- Cooking utensils
- Espresso machine



Informations

- Smoking not allowed
- Desk/Workplace
- Regular cleaning at extra cost
- Short-term parking zone subject to a charge
- Pets forbidden
- Bicycle room free of charge

Picture gallery



Infrastructure

-  5 min walk to the station Wien Mitte/Landstrasse with direct connection to the airport
-  direct trains from Wien Mitte/Landstrasse
-  20 min walk to the Stephansplatz
-  Local food market Rochusmarkt, heart of the 3rd district, at 5 min walk

Two supermarkets are at 250 m, closest pharmacy and drug store at 150 m.
The nearest bus and tram stop is at 1 min walk and the nearest metro station (U1 and U4) at 5 min walk.
Cycling path to the city center around the corner, another one by Danube channel at 300 m.

Location

