



STUDIO APARTMENT, 1090 VIENNA

1090 - Quiet, bright & cosy. Studio surrounded by a garden paradise!

Object number: FRAU1

[View and rent online](#)

1090 - Cosy Quiet Studio Apartment located in an old building, surrounded by a magnificent garden, views to Canisiuschurch.

Period	26/06/ - 26/07/2026
Number of persons	2
Total incl. VAT.	€ 1.389,93
Security deposit	€ 1.000,00



Living space

36m²



Maximum occupancy

2 Persons



Complete accommodation [?]

1 Private bathroom 1 Living-Sleepingroom



3. floor



Check-in

12:00 - 22:00 Clock



Check-out

10:00 - 14:00 Clock

Sleeping options

Living & Sleeping



1x Double bed (1,40 m x 2 m)



1x Sofa bed (2 persons)

Descripton of accommodation

All inclusive, fully furnished and equipped studio apartment, for short term rental - up to max. 6 months (according to § 1 Abs 2 Z 3 lit b. MRG "Philharmoniker Regelung"), price includes energy costs, wifi and tv, vat. Fully furnished and equipped. The apartment is situated on the 3rd floor (no elevator), it's quiet & bright. The house is facing a green and silent courtyard on one side, on the ohter side the picturescque yard of Canisius church. The apartment has got a 200 x 140 cm bed plus a sofa bed (same size). All bed linen, towels provided & included as well. Non smokers prefered. No pets, no small children (safety reasons). Bathroom with tub, washing maschine, please ask for further detail info in English if needed. Our garden on Instagram: viennacitygarden

Equipment & Features



Basic equipment

- Garden sharing
 - TV
 - Bedclothes
 - Private toilet
 - Iron & ironing board
 - Hairdryer
 - Internet/Wifi
 - Private washing machine
 - Towels
 - Vacuum cleaner
 - Cleaning utensils
-



First supply

- Toilet paper
-



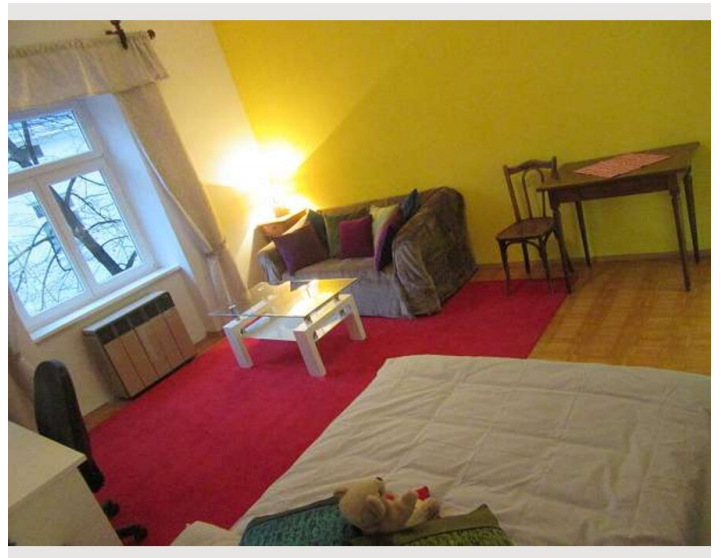
Kitchen

- Private kitchen
- Glasses/Tableware
- Microwave
- Cooking utensils
- Filter coffee

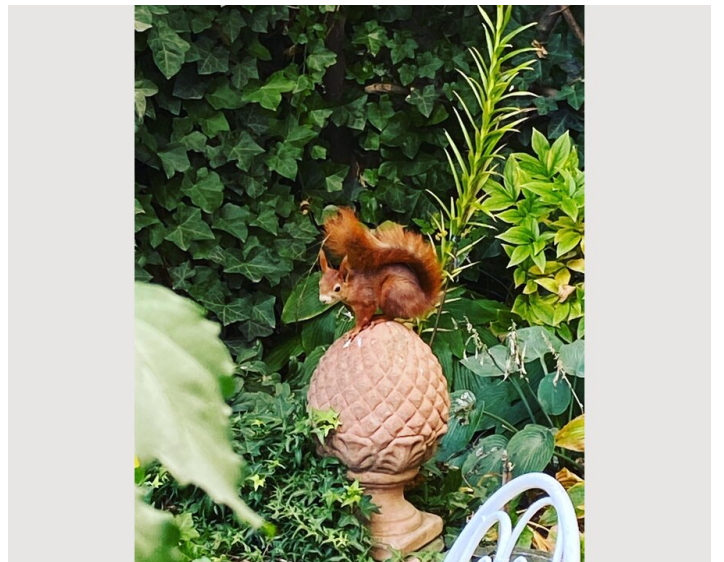
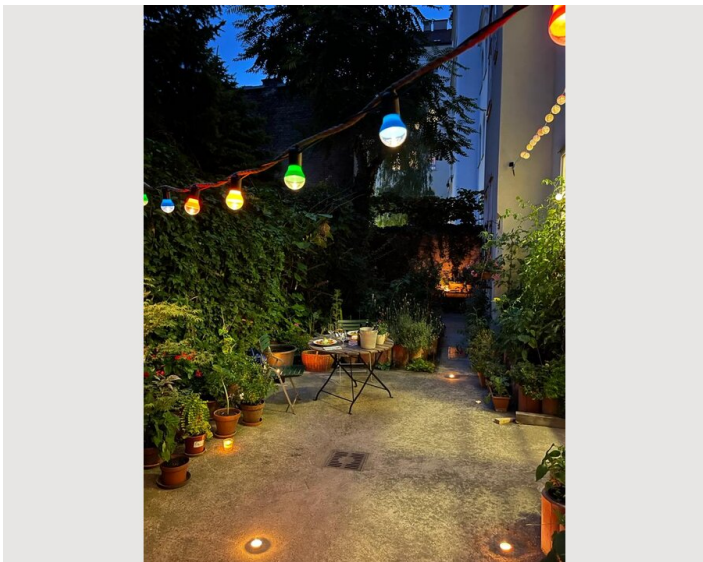
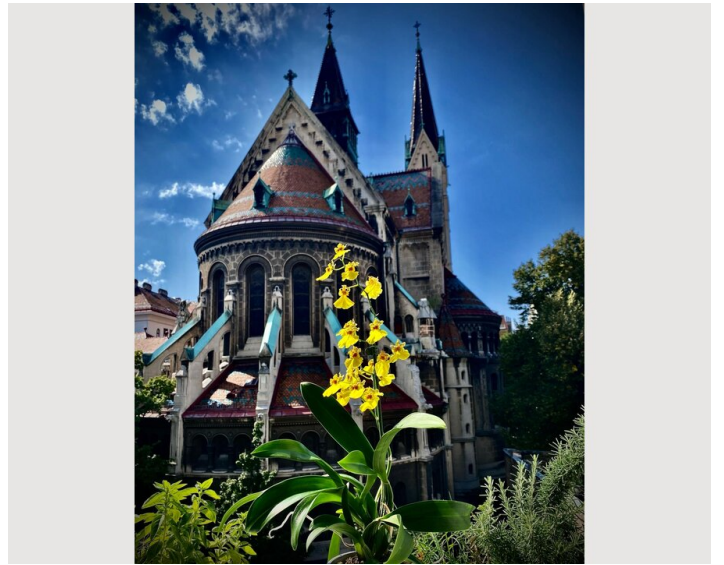
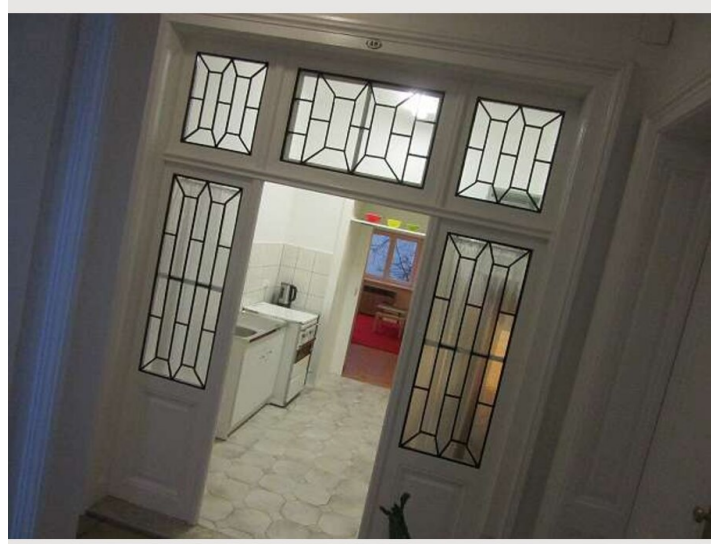
Informations

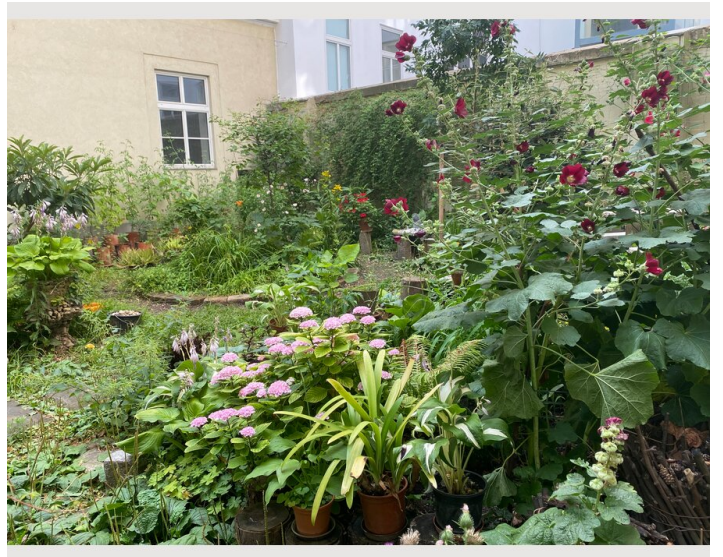
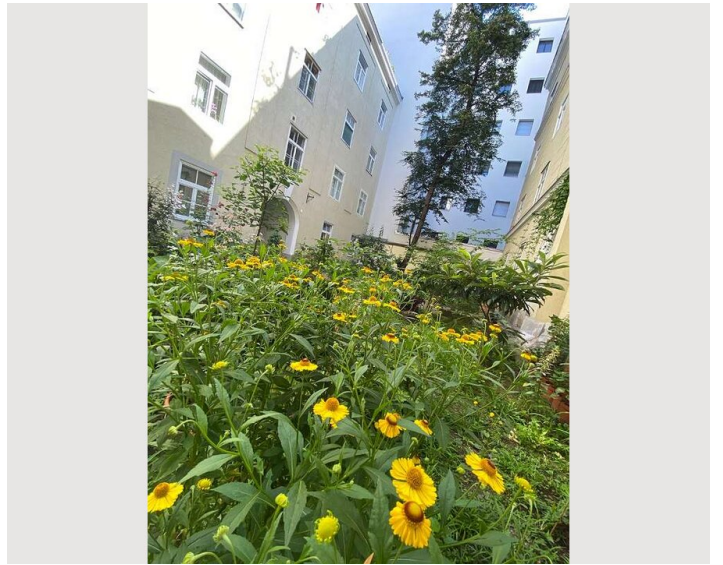
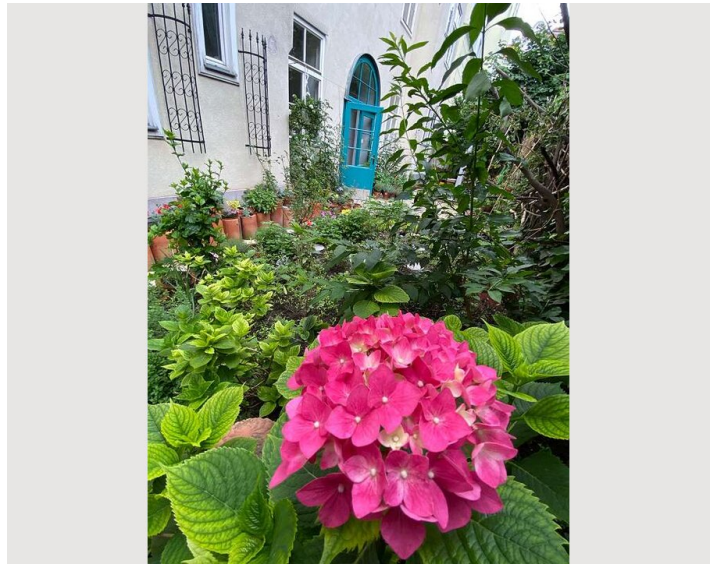
- Suitable for construction workers
- Smoking not allowed
- Desk/Workplace
- Pets forbidden
- Not suitable for children
- Short-term parking zone subject to a charge
- Private entrance
- Bicycle room free of charge

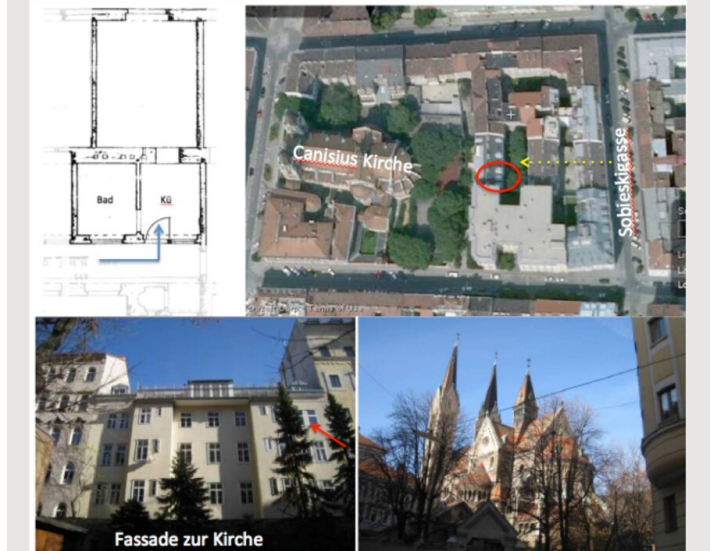
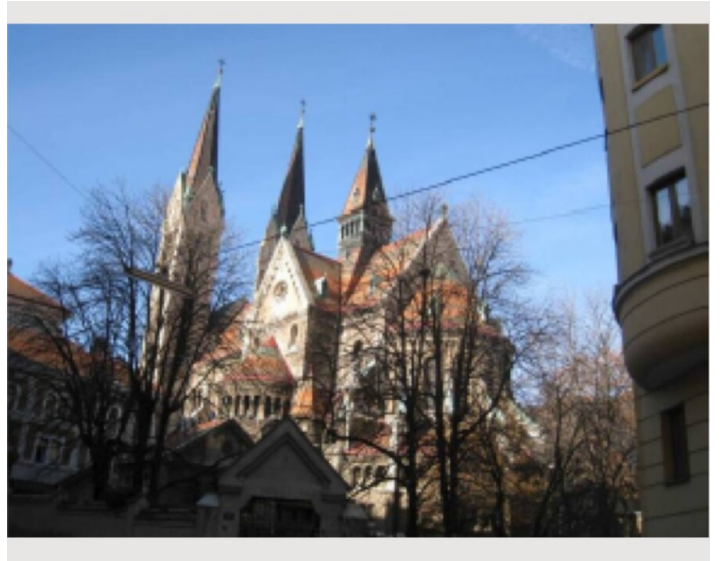
Picture gallery











Fassade zur Kirche

Infrastructure



Westbahnhof Station - U6 / Central Station,
Tram D



Taxi / Train / Bus; 30 - 60 Minuten



about 30 minutes walking distance to St.
Stephens Cathedral



Several major Supermarkets around the corner

Closest Underground: U6 Nussdorfer Strasse (5 min. walking distance)

Trams: Line 37 and 38, station: "Canisiusgasse"; (2 min. walking distance); Line D Station "Augasse" (5 min. walking distance)

Lots of restaurants, cafés and bars in our area. Next lager park: Währinger Park. Good jogging area (choose direction to Türkenschanz Park)

Location

