



3 ROOM APARTMENT, 5325 PLAINFELD

# Penthouse in plainfeld

Object number: GREH1

[View and rent online](#)

Exclusive penthouse apartment in Plainfeld with 3 rooms, 2 terraces, and a stunning view. Modern amenities, light-filled rooms, open kitchen. Two private parking spaces. Perfect for luxurious living in an idyllic setting.

Period	18/12/2025 - 18/01/2026
Number of persons	2
Total incl. VAT.	€ 1.855,72
Security deposit	€ 1.500,00



## Living space

70m²



## Maximum occupancy

2 Persons



## Complete accommodation ?

1 Private bathroom 1 Separated bedroom



## 1. floor



## Check-in

10:00 - 12:00 Clock



## Check-out

09:00 - 11:00 Clock

## Sleeping options

### Sleeping room



1x Double bed (1,80 m x 2 m)

## Description of accommodation

Modern Penthouse Apartment in Plainfeld: Exclusive Luxury Property with Stunning Views

Welcome to your new home: a modern penthouse apartment in the idyllic community of Plainfeld. This exclusive property offers you the highest level of living comfort and impresses with its first-class amenities and breathtaking views.

Highlights of the Penthouse Apartment:

**Spacious Living Area:** The penthouse apartment includes three rooms, thoughtfully distributed over a well-designed living space. Each room is flooded with light, providing a pleasant living atmosphere.

**Two Terraces:** Enjoy the fresh air and expansive views over the picturesque Plainfeld landscape from two generous terraces. The larger terrace is perfect for cozy evenings with friends and family, while the smaller terrace offers a private retreat.

**Stunning Views:** The location of the apartment allows for an unparalleled panoramic view of the surrounding mountains and nature. Here, you can start each day with a breathtaking sunrise and fully enjoy the tranquility of the surroundings.

**Two Parking Spaces:** The apartment includes two private parking spaces, providing you with convenient and secure parking for your vehicles at any time.

This penthouse apartment in Plainfeld is the perfect choice for those seeking luxury and comfort in an idyllic setting. Be captivated by the unique combination of modern architecture and natural beauty, and make this exclusive property your new home.

## Equipment & Features



### Basic equipment

- Terrace
- Private toilet
- Aircondition
- Internet/Wifi
- Private parking space



### First supply

- Toilet paper



### Kitchen

- Private kitchen
- Glasses/Tableware
- Cooking utensils
- Dishwasher

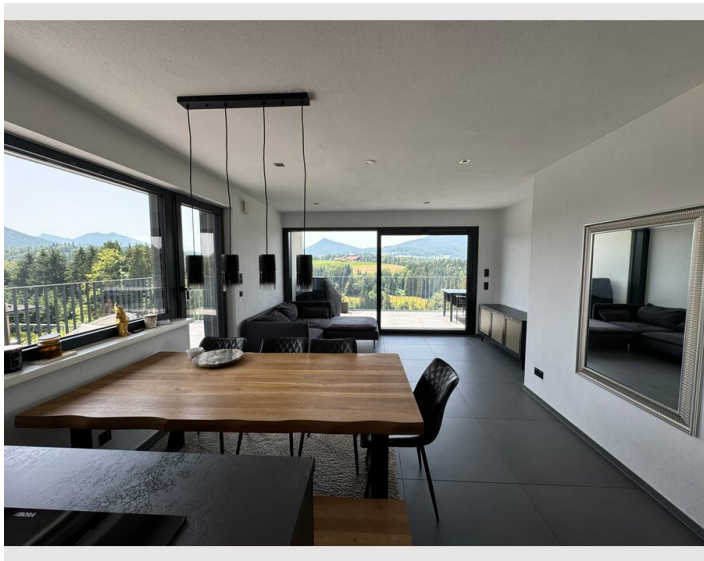
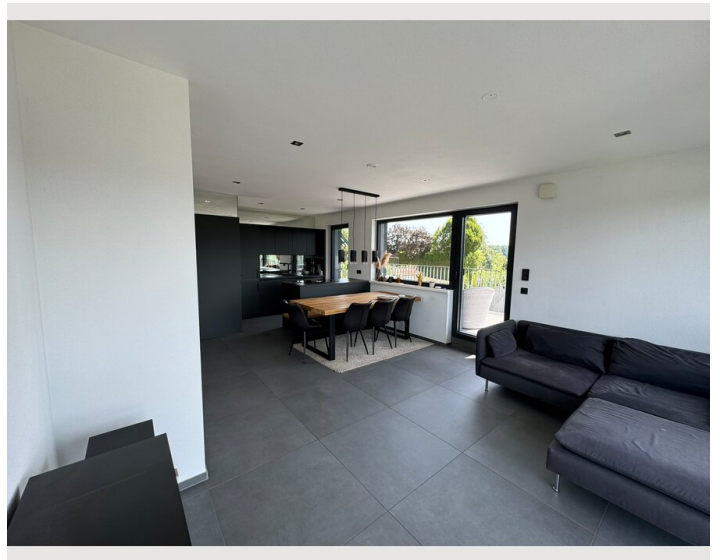
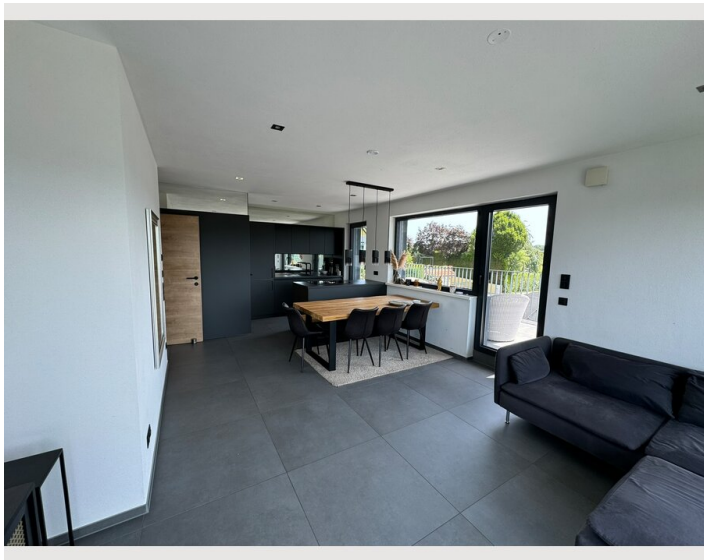
## Informations

- Suitable for children
- Desk/Workplace
- Smoking not allowed
- Pets forbidden

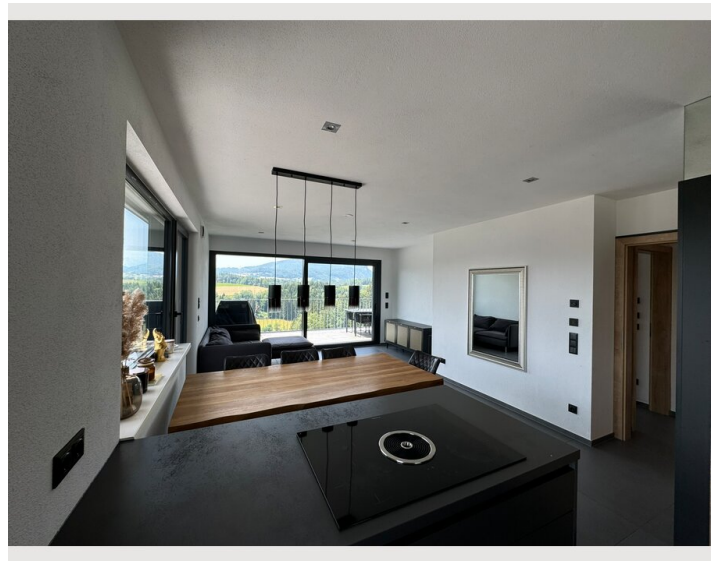
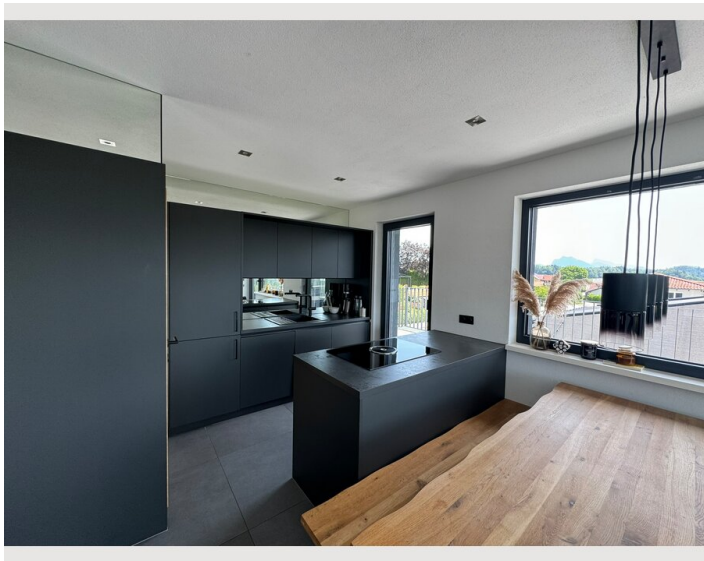
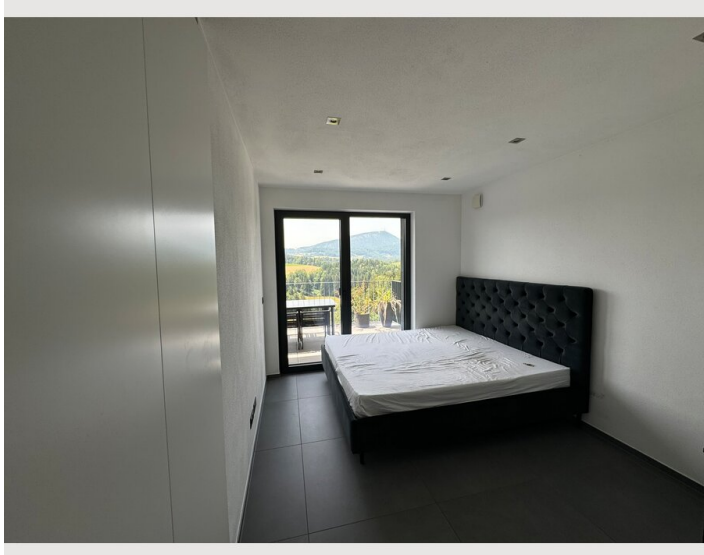
## Picture gallery











## Infrastructure



The infrastructure of the area is highly advantageous for public transportation. The nearest bus stop is only a one-minute walk away, making access to the bus network very convenient. From this stop, a bus goes directly to Koppel Sperbrücke. Koppel Sperbrücke serves as a central transfer point, from which there are further connections to the city as well as towards Fuschl. This excellent connectivity allows residents to quickly and easily reach both urban and rural destinations.

## Location

