



2 ROOM APARTMENT, 1010 VIENNA

city center apartment in a historical building 51 m2

Object number: HEGQ4

[View and rent online](#)

the flat is in the 3. floor, you can use the elevator in the 4. floor and must go down.

Period	21/04/ - 21/05/2026
Number of persons	2
Total incl. VAT.	€ 3.062,07
Security deposit	€ 2.300,00



Living space

51m²



Maximum occupancy

4 Persons



Complete accommodation [?]

1 Private bathroom 1 Separated bedroom 1 Living-Sleepingroom



3. floor

Elevator available



Check-in

15:00 - 00:01 Clock



Check-out

01:34 - 11:00 Clock

Sleeping options

Sleeping room



1x Double bed (1,60 m x 2 m)

Living & Sleeping



1x Sofa bed (2 persons)

Descripton of accommodation

the apartment has 1 little sleeping room, a living room with a table, couch, tv, a fully equipped kitchen and a bathroom with a bathtub and a toilet.

Equipment & Features



Basic equipment

- Internet/Wifi
- Private washing machine
- Bedclothes
- Private toilet
- Iron & ironing board
- TV
- Private dryer
- Towels
- Vacuum cleaner
- Hairdryer



First supply

- Toilet paper
- Soap
- Fridge filling on request
- shampoo
- Nespresso capsules



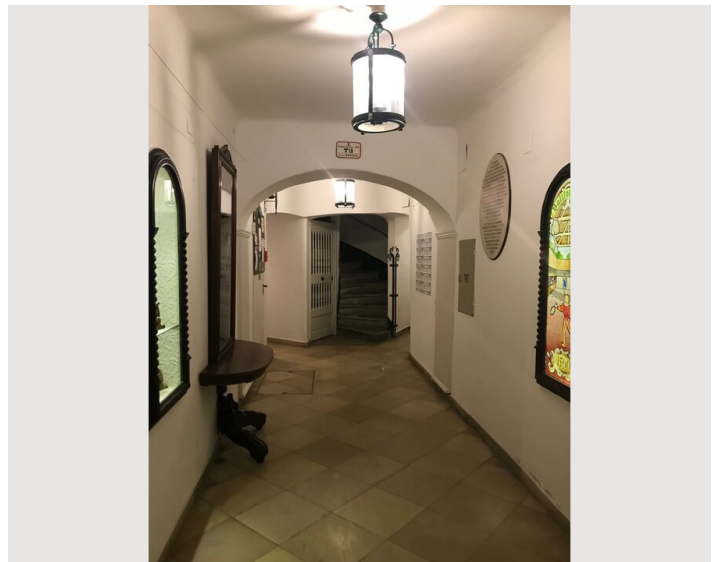
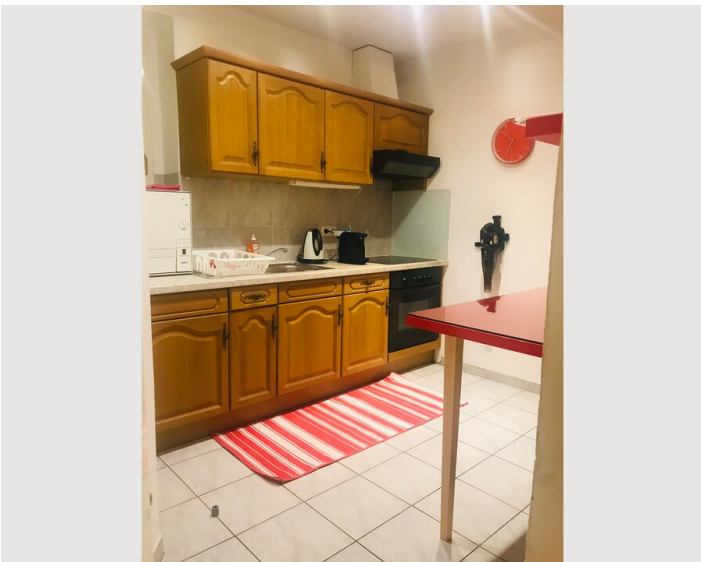
Kitchen

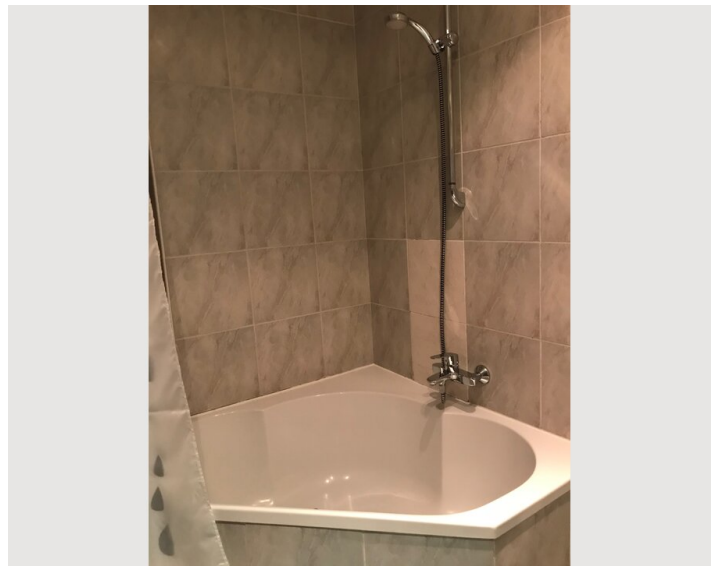
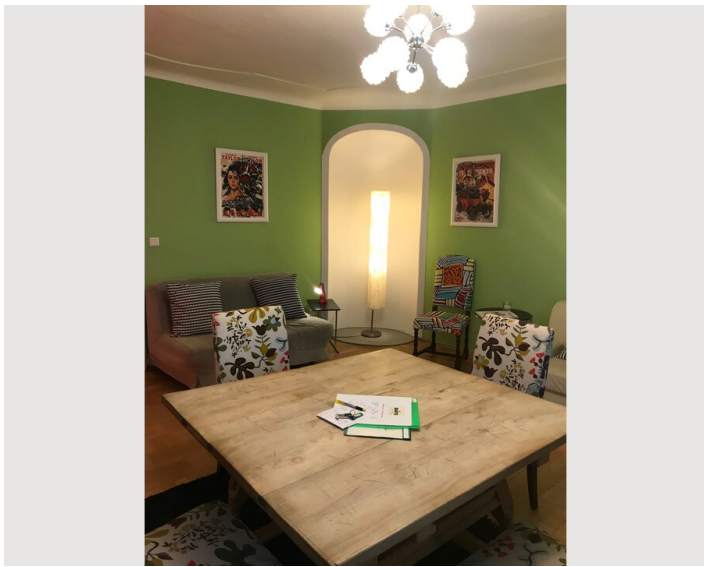
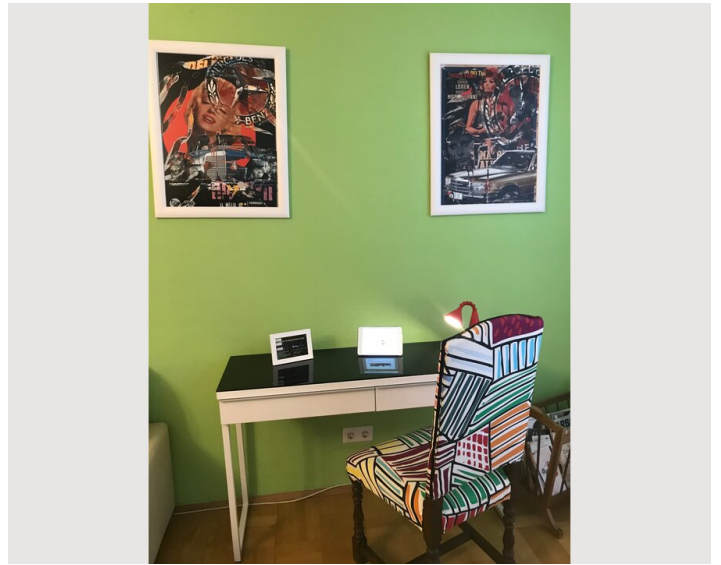
- Private kitchen
- Glasses/Tableware
- Dishwasher
- Cooking utensils
- Espresso machine
- Microwave

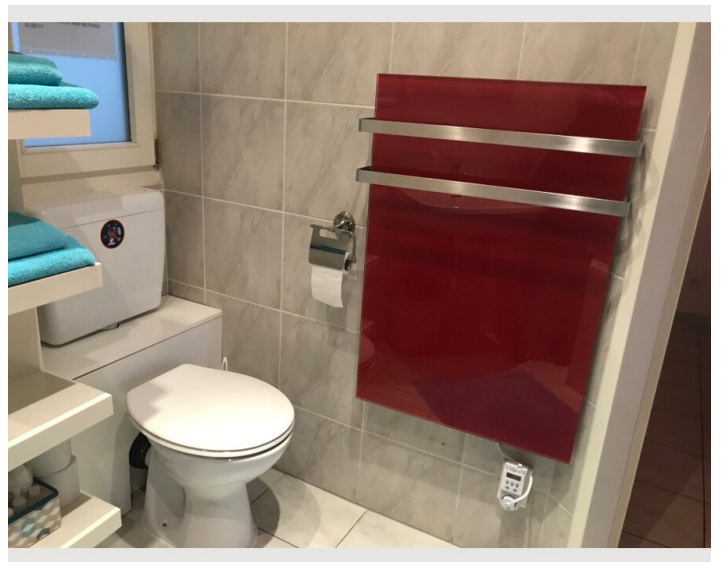
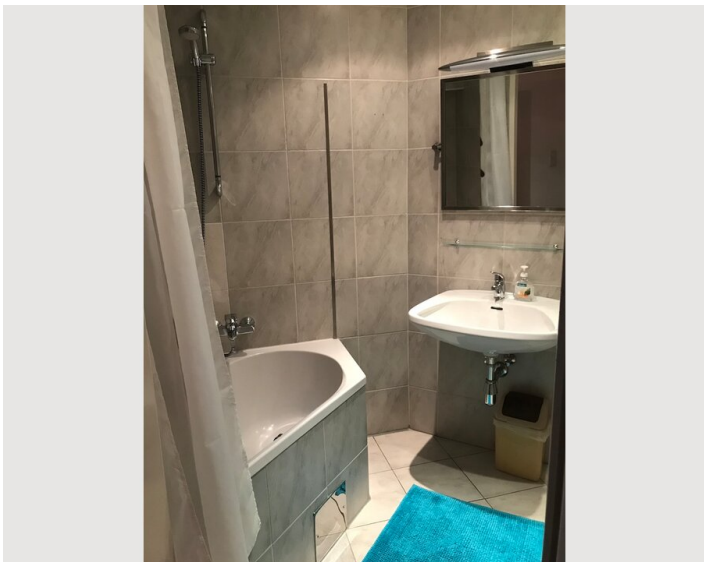
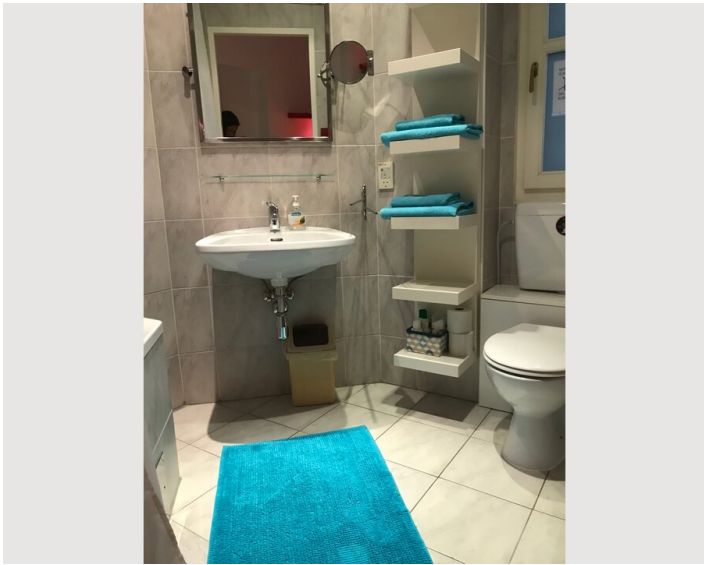
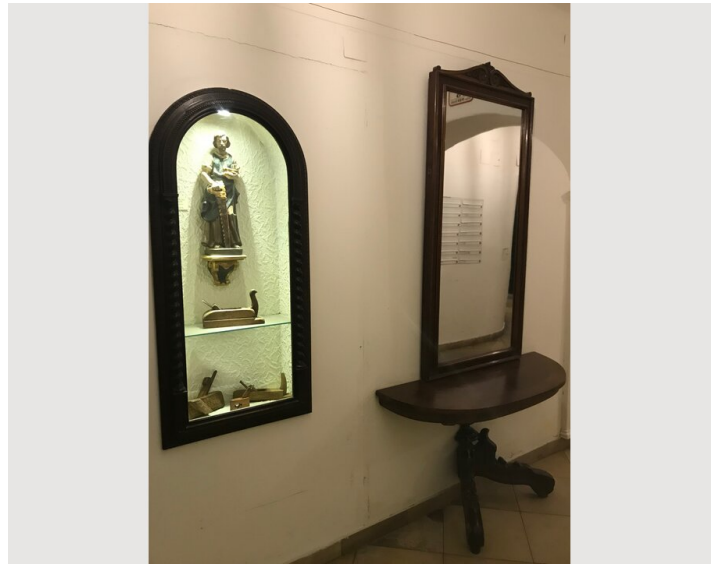
Informations

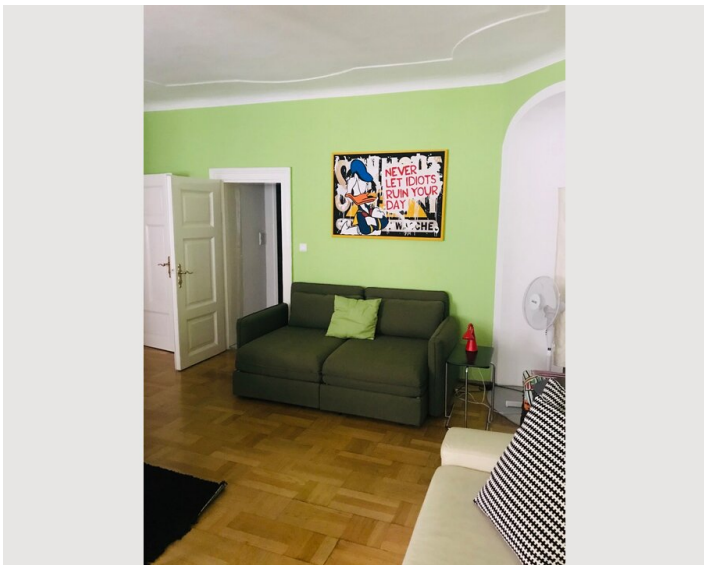
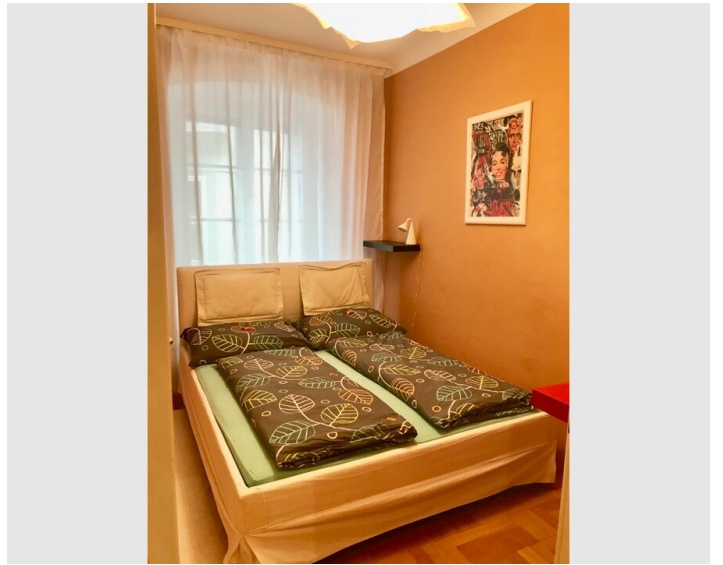
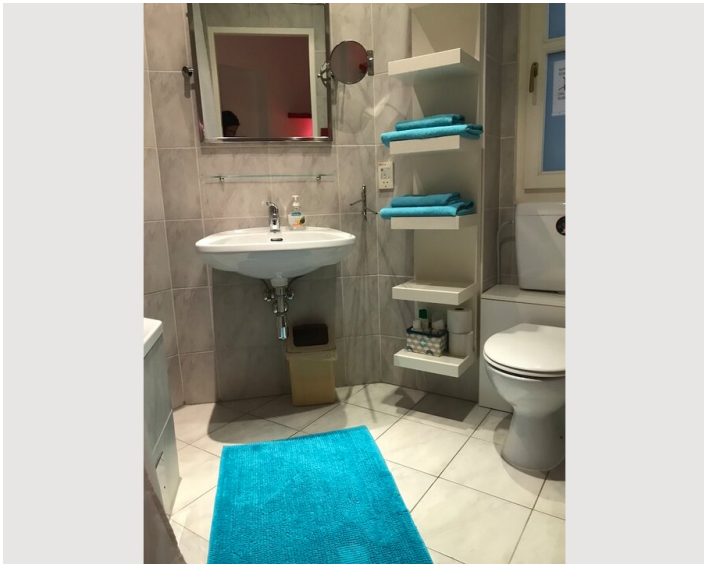
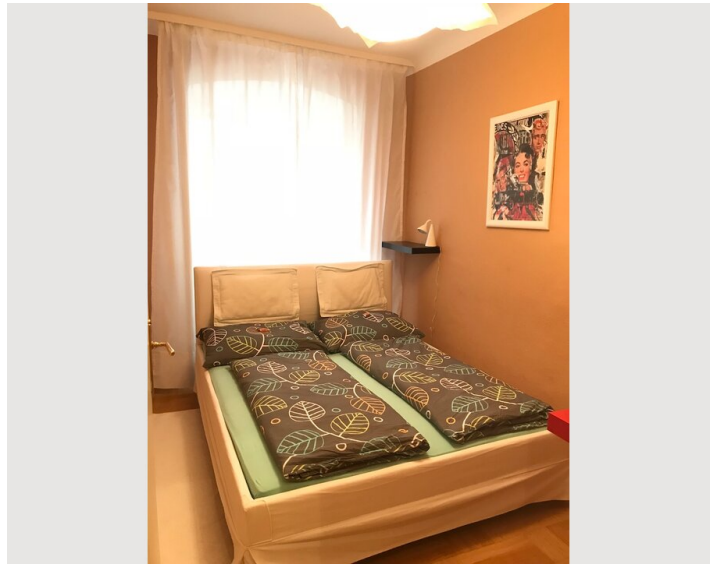
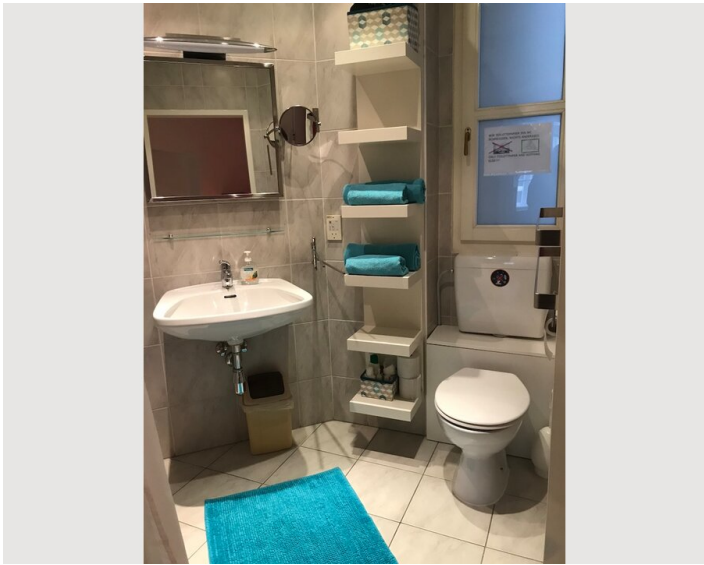
- Suitable for construction workers
- Smoking not allowed
- Desk/Workplace
- Pets on request
- Suitable for children
- Short-term parking zone subject to a charge
- Private entrance
- Regular cleaning at extra cost

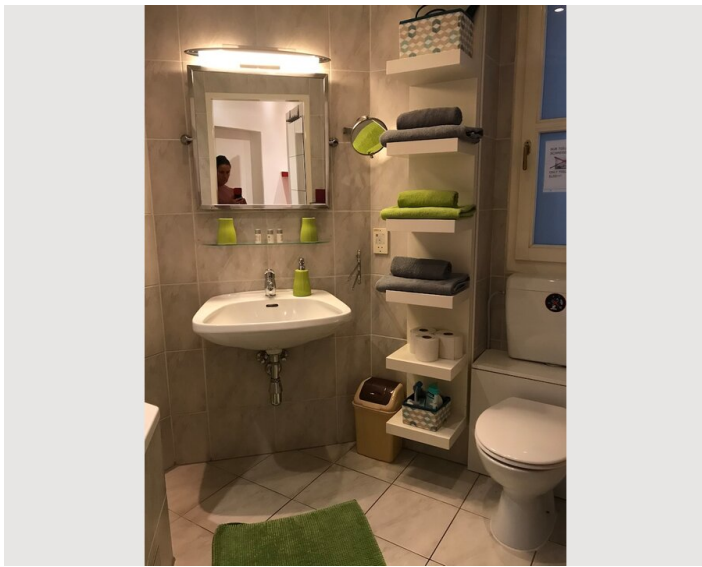
Picture gallery















Infrastructure

 underground 150 m

 opera 400 m

 supermarket 150 m

 Stephansdom 150 m

 Restaurant in the street

supermarket, sightseeing, shops, restaurants, pharmacy, underground, opera, theater, museums, all in walking distance.

Location

