



3 ROOM APARTMENT, 1130 VIENNA

## Apartment Schönbrunn

Object number: GAMW3

[View and rent online](#)

Luxury apartment near Schönbrunn Palace right in the heart of Hietzing, the 13th district of Vienna. In the city but in the green. Line 60 takes you directly from the front door to the subway station U4 Hietzing / Schönbrunn Palace and Tiergarten

<b>Period</b>	22/07/ - 22/08/2025
<b>Number of persons</b>	2
<b>Total</b> incl. VAT.	€ 3.559,36
Security deposit	€ 2.700,00



### Living space

80m<sup>2</sup>



### Maximum occupancy

4 Persons



### Complete accommodation <sup>?</sup>

1 private bathroom 1 Separated bedroom 2 Shared bedrooms



### 1. floor



### Check-in

08:00 - 20:00 Clock



### Check-out

09:00 - 12:00 Clock

## Sleeping options

### Sleeping room



1x Double bed (1,80 m x 2 m)



2x Single bed

### Living and sleeping 1



1x Double bed (1,80 m x 2 m)

## Living and sleeping 2



2x Single bed

### Descripton of accommodation

The apartment has 1 bedroom sofa couch with a double bed, 1 salon with 2 single beds and a sofa couch, 1 kitchen, 1 shower room and 1 toilet. A door leads from the salon to the terrace with garden. The apartment has a separate entrance and is from remaining house separately

## Equipment & Features



### Basic equipment

- Terrace
- Internet/Wifi
- Private washing machine
- Bedclothes
- Private toilet
- Vacuum cleaner
- Cleaning utensils
- Garden
- TV
- Private dryer
- Towels
- Parking space
- Iron & ironing board
- Hairdryer



### Fireplace

- Bioethanol fireplace



### First supply

- Toilet paper
- Soap
- Fridge filling on request
- shampoo
- Nespresso capsules



### Kitchen

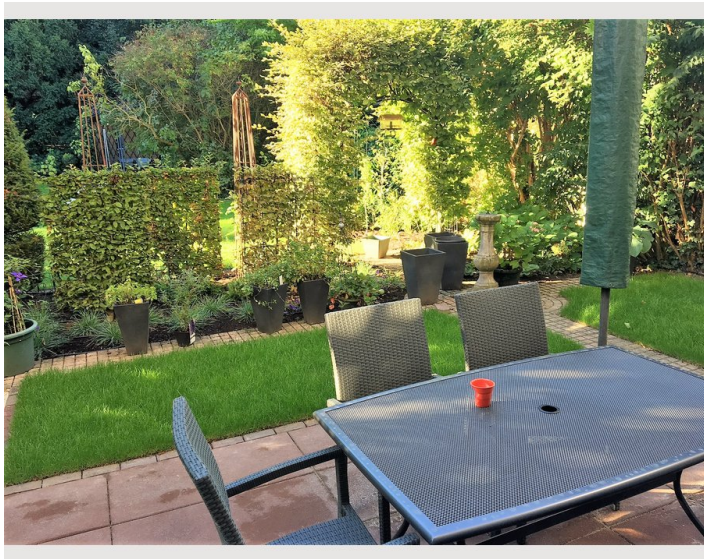
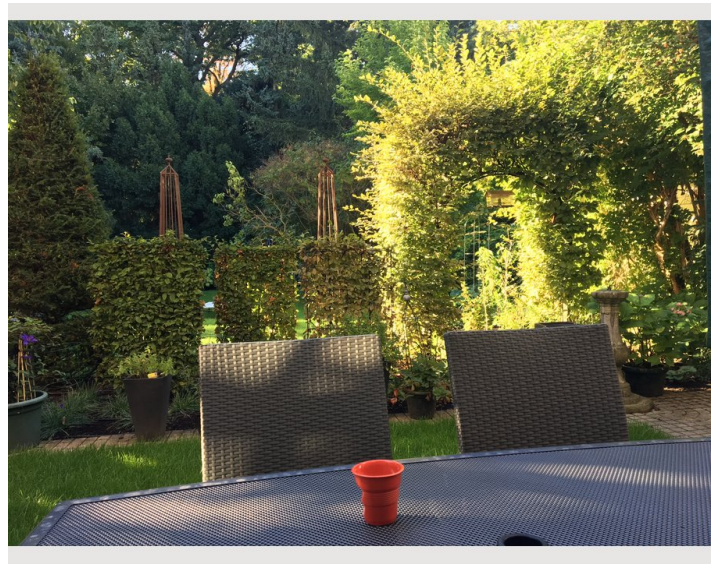
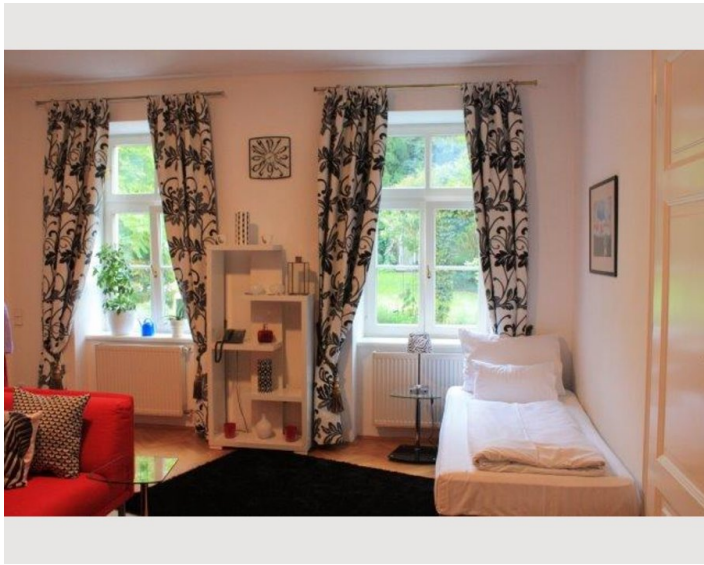
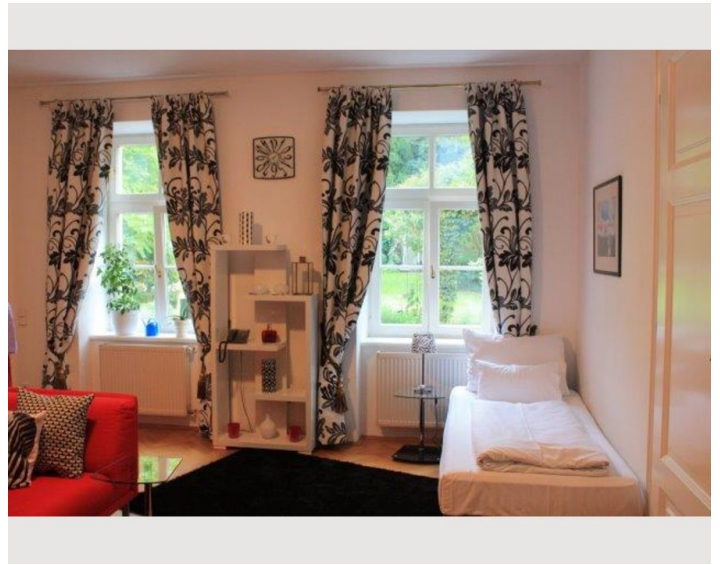
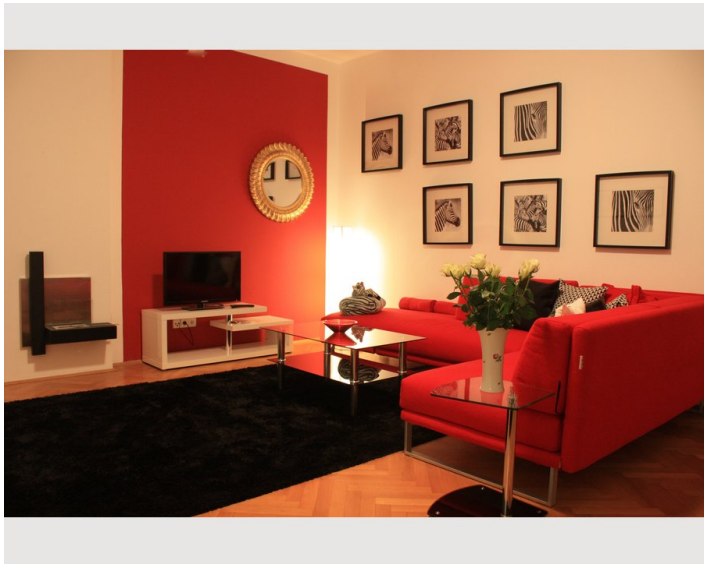
- Private kitchen
- Glasses/Tableware
- Filter coffee
- Microwave
- Cooking utensils
- Espresso machine
- Dishwasher

## Informations

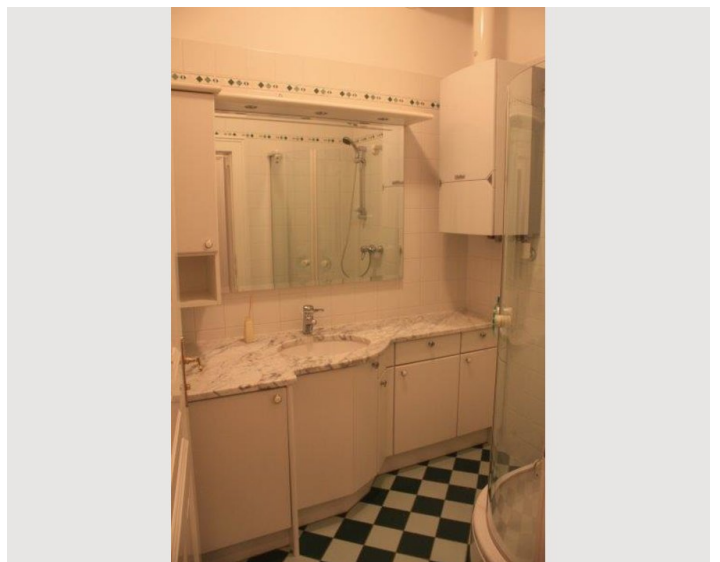
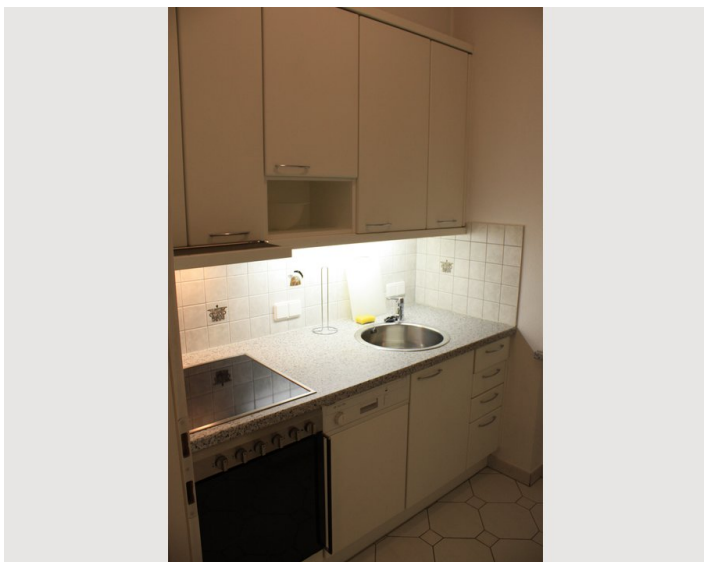
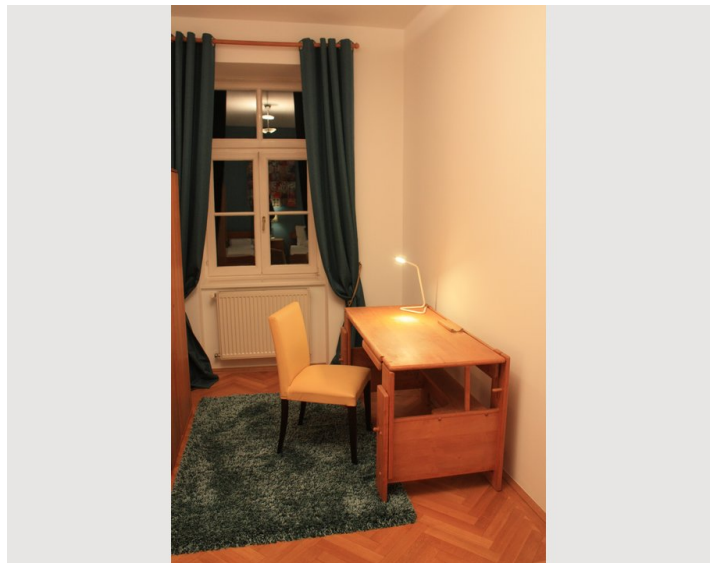
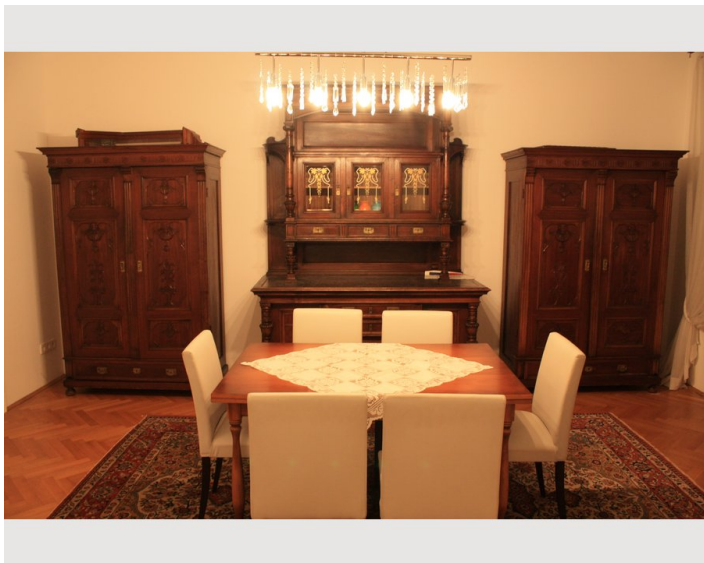
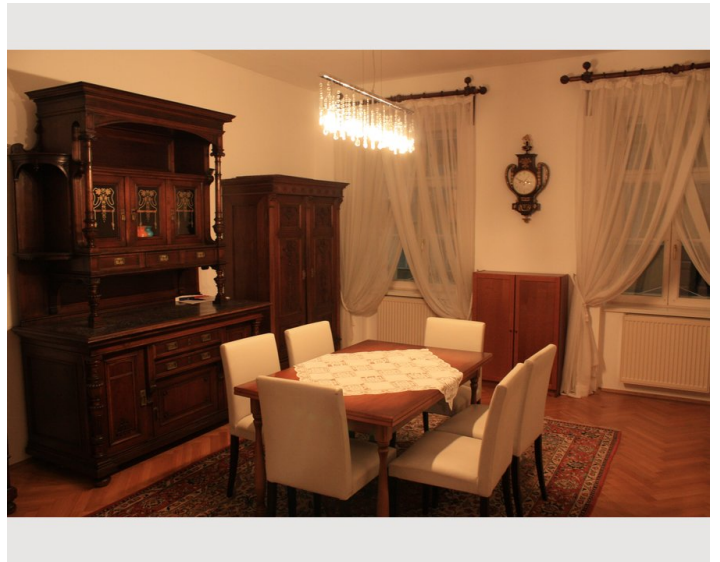
- Suitable for children
- Short-term parking zone subject to a charge
- Private entrance
- Regular cleaning at extra cost
- Smoking not allowed
- Desk/Workplace
- Pets on request

## Picture gallery











### Infrastructure



In front of the house on Lainzerstraße, tram line 60 leads directly to the Hietzing subway station, where you can get directly to the Schkoßpark and the Schönbrunn Zoo. Within walking distance are 2 supermarkets, 2 drugstores, 1 bakery, the restaurants "Wambacher", "Mario", "Plachutta" and the famous cafe "Dommayer", in which the waltz composer Johann Strauß used to play. Since there are numerous embassies in the immediate vicinity, the area around the house is not only very green but also very safe.

Location

