



2 ZIMMER WOHNUNG, 1050 VIENNA

Lux Apartment

Object number: BWLR2

[View and rent online](#)

This fully furnished 2-room flat in the 5th district is ideal for short-term tenants on business, both in terms of furnishings and location!

Period	20/04/ - 20/05/2025
Number of persons	2
Total incl. VAT.	€ 1.855,86
Security deposit	€ 1.400,00



Living space

42m²



Maximum occupancy

4 Persons



Complete accommodation [?]

1 private bathroom 1 Separated bedroom 1 Living-Sleepingroom



1. floor

Elevator available



Check-in

00:00 - 00:00 Clock



Check-out

00:00 - 10:00 Clock

Sleeping options

Sleeping room



2x Double bed (1,60 m x 2 m)

Living and sleeping



1x Double bed (1,60 m x 2 m)

Descripton of accommodation

The flat was completely renovated in 2022. It consists of a cosy bedroom and a living room, which invites you to linger.

The flat offers you internet, flat screen TV, dishwasher, microwave, oven, fridge, oven, ceramic hob, washing machine and much more!

Move in and feel at home!

Equipment features

Basic equipment

- Garden sharing
- TV
- Community washing machine
- Towels
- Vacuum cleaner
- Cleaning utensils
- Internet/Wifi
- Private washing machine
- Bedclothes
- Private toilet
- Iron & ironing board
- Hairdryer

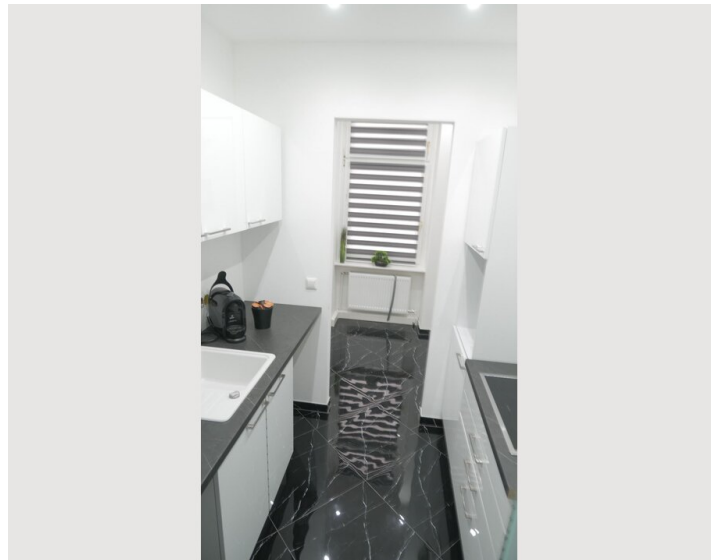
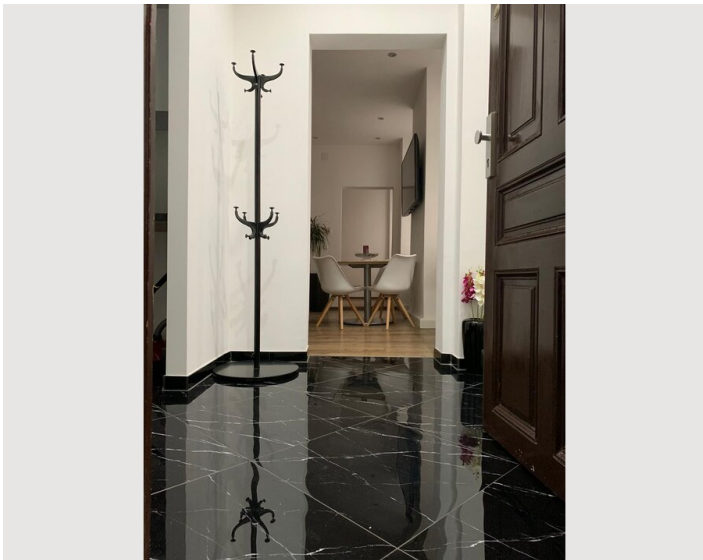
Kitchen

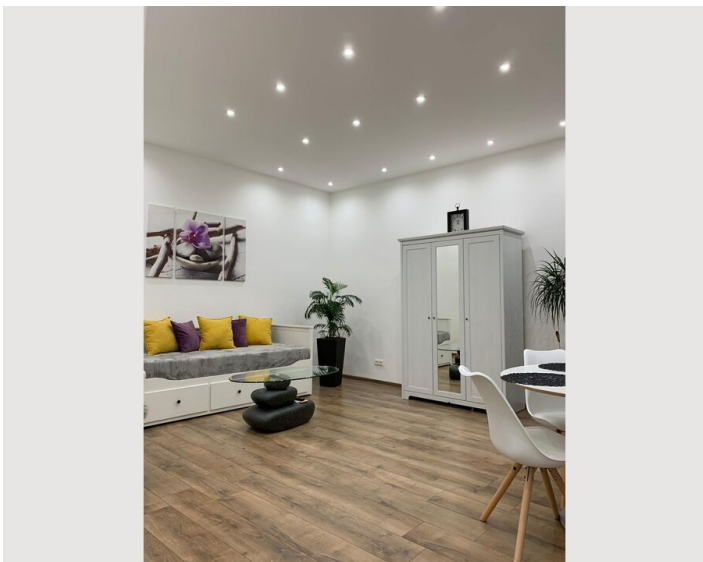
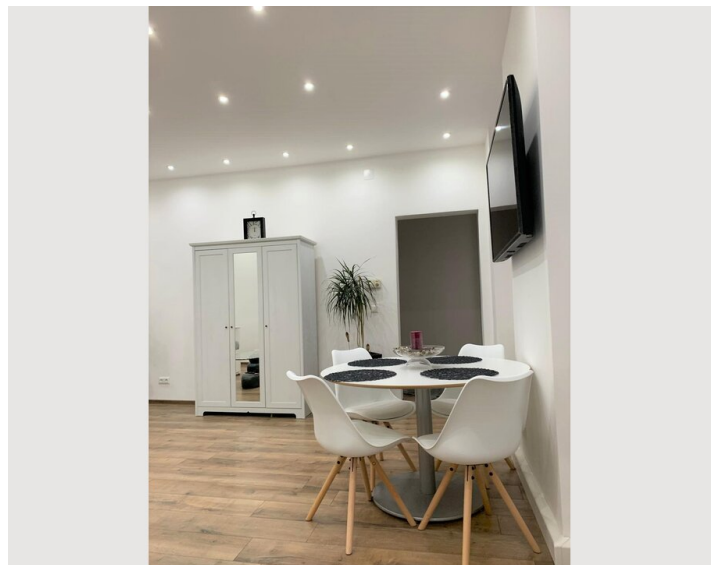
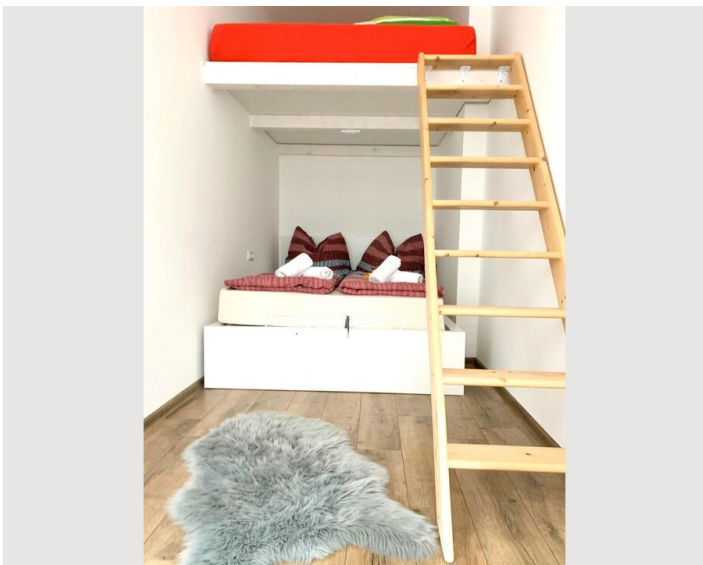
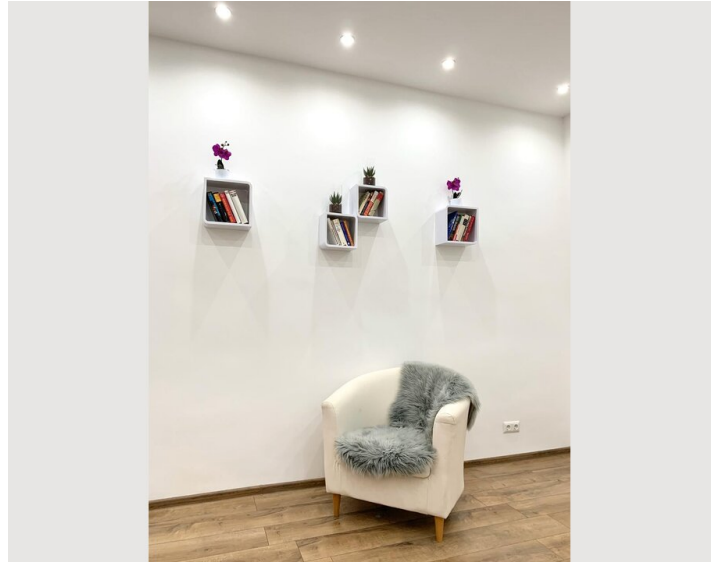
- Private kitchen
- Espresso machine
- Microwave
- Glasses/Tableware
- Dishwasher

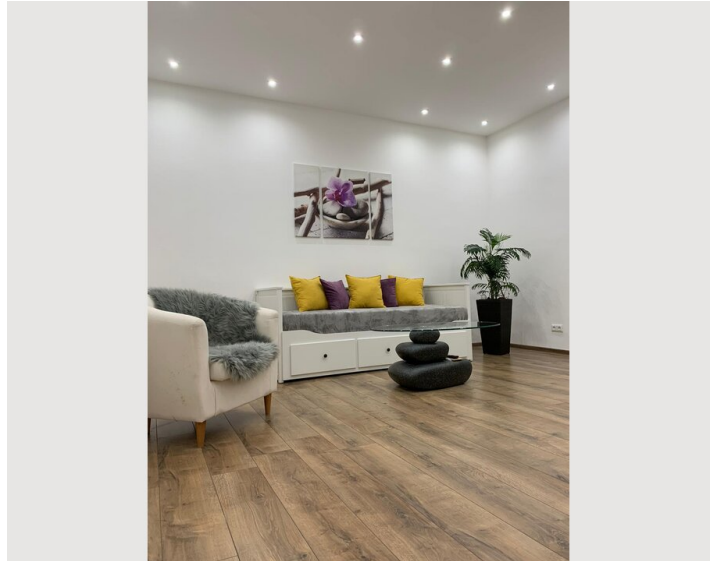
Informations

- Suitable for construction workers
- Smoking not allowed
- Private entrance
- Regular cleaning at extra cost
- Suitable for children
- Desk/Workplace
- Pets on request
- Bicycle room free of charge

Picture gallery









Infrastructure

📍 by walk within 15 minutes to the opera house

🚌 app. 10 minutes with busline 13A

🚇 U4 Pilgramgasse within 5 minutes by walk

🏪 Billa next to the house

The flat is very centrally located. Opposite the flat is Billa, pharmacy, restaurants.

Bus 13A,12,A,59A underground U4 within 5 minutes walking distance, centre within 15 minutes walking distance.

You can reach the main railway station in 10 minutes on the 13A. Schlossquadrat with a huge selection of restaurants just around the corner. The popular Naschmarkt is also in the immediate vicinity of the flat.

Everything your heart desires right on the doorstep!

Location

