



STUDIO APARTMENT, 5020 SALZBURG

## Studio Apartment with garden and swimming pond in the City Center

Object number: WAKC1

[View and rent online](#)

Beautiful old building apartment in the center of Salzburg with garden and swimming pond.

<b>Period</b>	24/02/ - 24/03/2026
<b>Number of persons</b>	2
<b>Total incl. VAT.</b>	€ 1.287,38
<b>Security deposit</b>	€ 1.000,00



### Living space

28m<sup>2</sup>



### Maximum occupancy

2 Persons



### Complete accommodation <sup>?</sup>

1 Private bathroom 1 Living-Sleepingroom



### 2. floor



### Check-in

07:30 - 19:06 Clock



### Check-out

07:30 - 19:00 Clock

## Sleeping options

### Living & Sleeping



1x Double bed (1,40 m x 2 m)

## Descripton of accommodation

This 1-room apartment is located in the beautiful Andräviertel district in the immediate vicinity of Mirabell Palace and the Linzergasse promenade.

The renovated and newly equipped studio apartment is located on the 2nd floor of a fabulous old building with classic high rooms and a total of only six residential units in the entire building.

The studio apartment has an entrance area with plenty of storage space, a bathroom with shower and a living area with attached fully equipped kitchen.

In the quiet backyard there is a garden with a swimming pond/natural pool for shared use.

## Equipment & Features



### Basic equipment

- Garden sharing
- Community washing machine
- Towels
- Vacuum cleaner
- Internet/Wifi
- Bedclothes
- Private toilet



### Pool

- Swimming pond



### First supply

- Toilet paper
- Soap



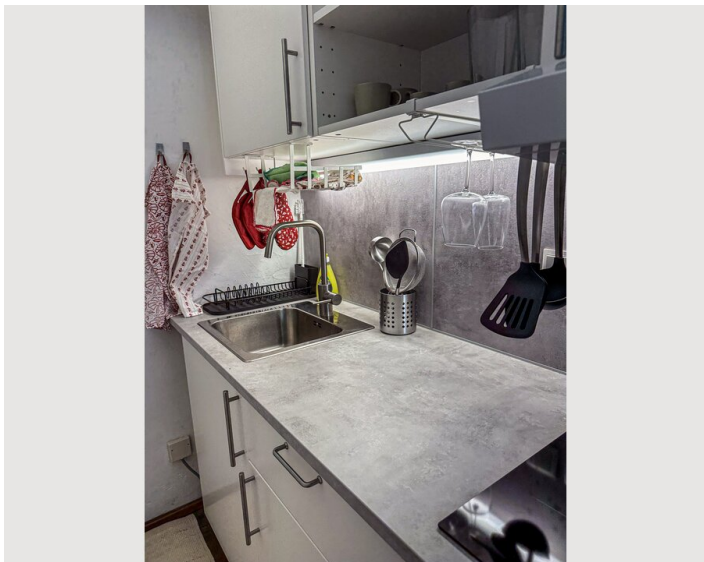
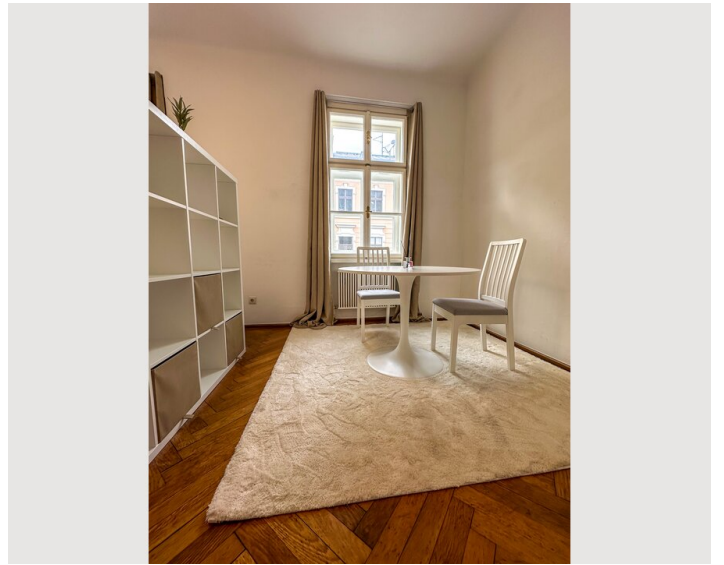
### Kitchen

- Private kitchen
- Glasses/Tableware
- Cooking utensils
- Espresso machine

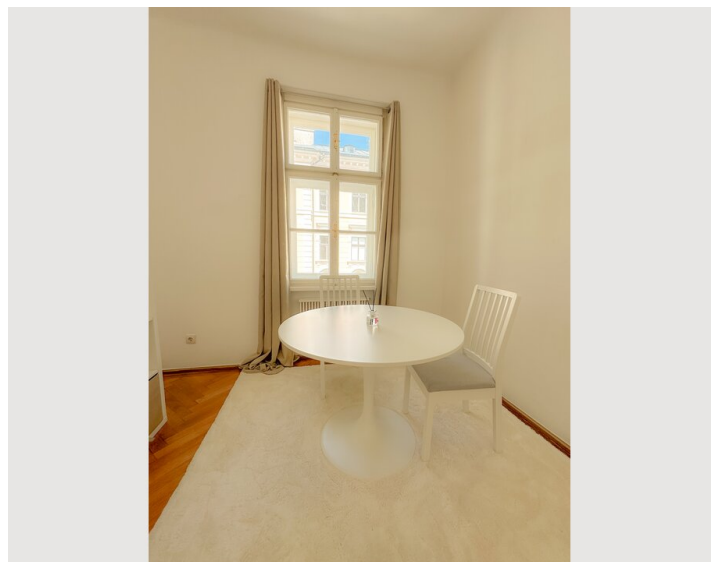
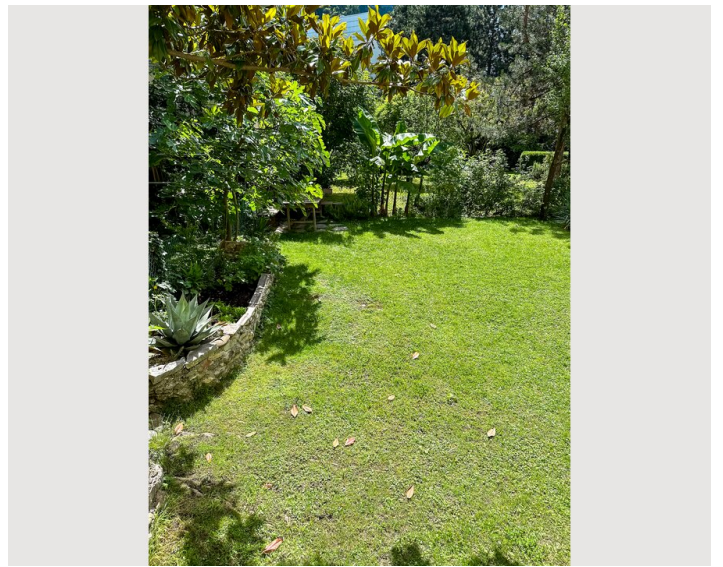
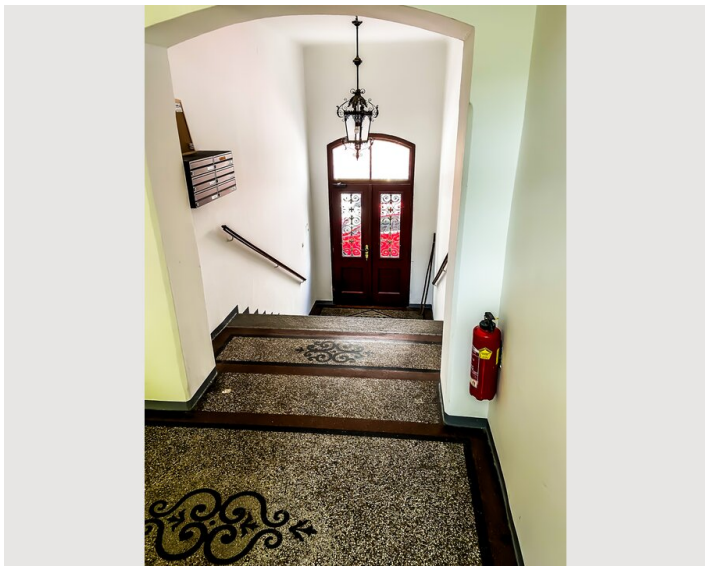
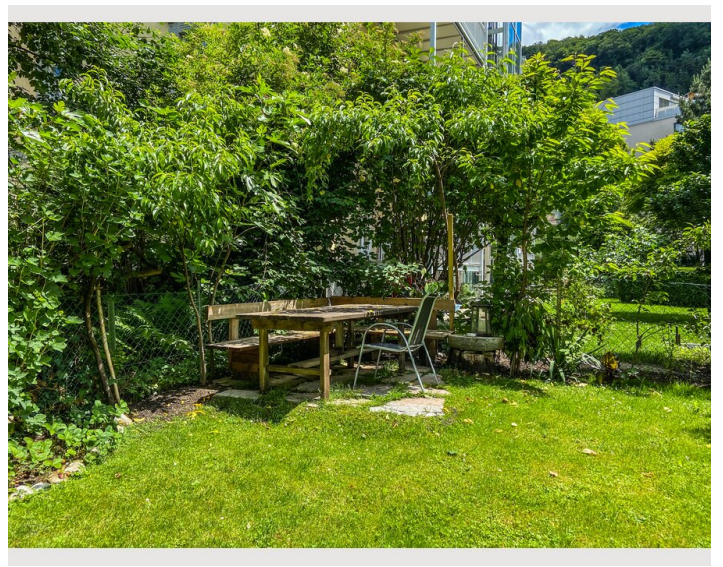
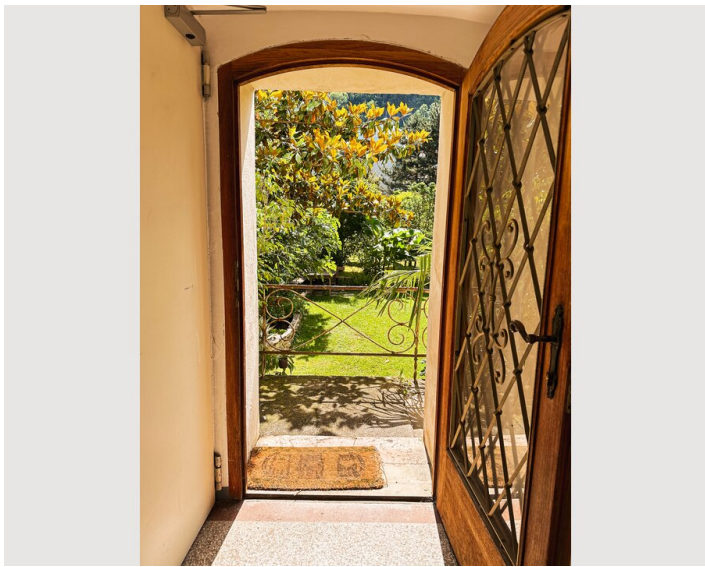
## Informations

- Not suitable for children
- Short-term parking zone subject to a charge
- Regular cleaning at extra cost
- Smoking not allowed
- Pets forbidden

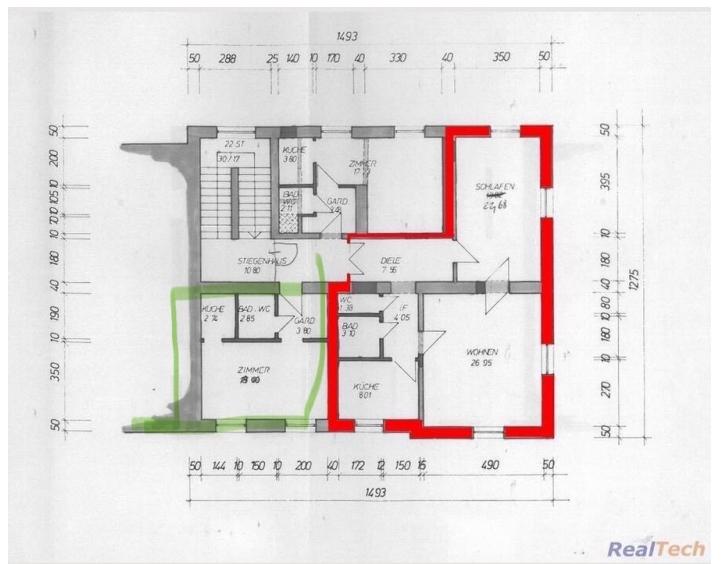
## Picture gallery











## Infrastructure



Since the apartment is located in the centre of the city, all infrastructures such as grocery stores, transport connections, etc. are within walking distance.

## Location

