



2 ROOM APARTMENT, 6020 INNSBRUCK

Modern light 2-room flat with large balcony in Innsbruck

Object number: FEIR1

[View and rent online](#)

Period	09/12/2025 - 09/01/2026
Number of persons	2
Total incl. VAT.	€ 1.003,42
Security deposit	€ 800,00

High-quality light 2-room flat with large balcony and underground parking space. Great mountain views and well-connected location (motorway exit Innsbruck Mitte, buses towards the city centre and the mountains Patscherkofel and Nordkette).



Living space

34m²



Maximum occupancy

2 Persons



Complete accommodation [?]

1 Private bathroom 1 Separated bedroom



3. floor

Elevator available



Check-in

09:00 - 19:30 Clock



Check-out

09:00 - 19:30 Clock

Sleeping options

Sleeping room



1x Double bed (1,40 m x 2 m)

Description of accommodation

The flat is located on the 3rd (top) floor of a housing estate near the motorway exit "Innsbruck Mitte" and next to various bus stops (buses towards the city centre and the mountains Patscherkofel and Nordkette).

The nicely cut flat consists of a large kitchen- and living room space, a separate bedroom, and a bathroom and would greatly suit a single person or a couple.

The main room includes a little foyer and a generous living area with a table, chairs, a couch and a fully equipped kitchen (incl. a fridge with freezer, a glass cooktop, oven, dishwasher, microwave, fume cupboard).

The bedroom is separated from the living room by a sliding door and includes a bed (1.40x2.00), under-bed storage and a large wardrobe.

The bathroom is equipped with a shower, a toilet and a washing machine.

The flat has underfloor heating. Both the bedroom and living room have a door to the 13m² large balcony that faces southwards towards Bergisel and Patscherkofel. The balcony has a table and chairs and a wardrobe for extra storage.

The flat is provided with everything one needs for a relaxed stay: kitchen utensils, Mocca-maker, kettle, cutlery, pans, pots, glasses, bed linen, towels, herbs, tea, coffee, shampoo, toilet paper etc.

The housing estate is equipped with elevators and lockable bike sheds. The flat comes with a private underground parking space and a cellar,

Equipment & Features



Basic equipment

- Balcony
- Music system/docking station
- Bedclothes
- Private toilet
- Garage
- Cleaning utensils
- Internet/Wifi
- Private washing machine
- Towels
- Private parking space
- Iron & ironing board
- Hairdryer



First supply

- Toilet paper
- Soap
- shampoo



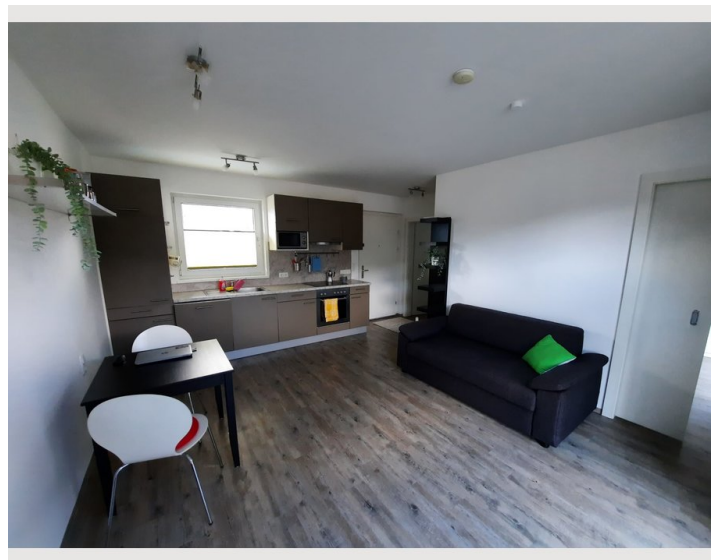
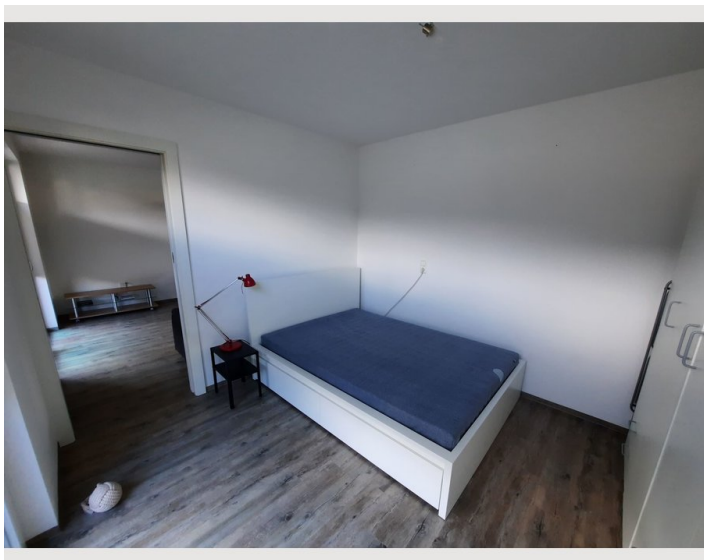
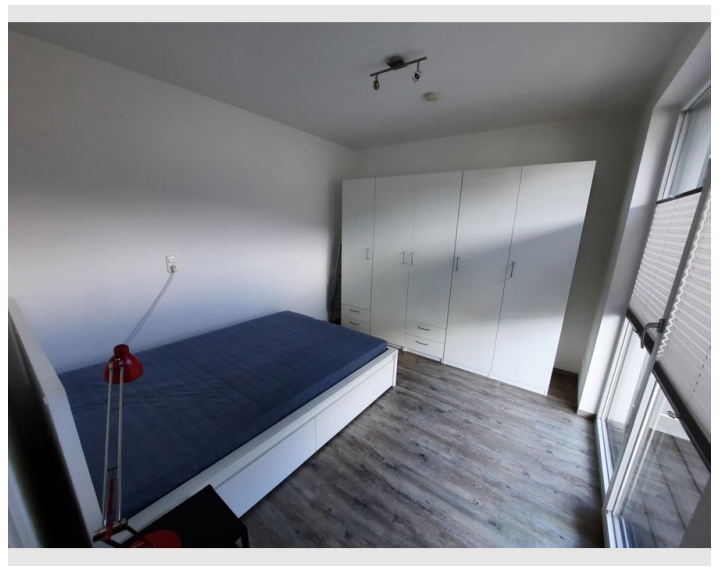
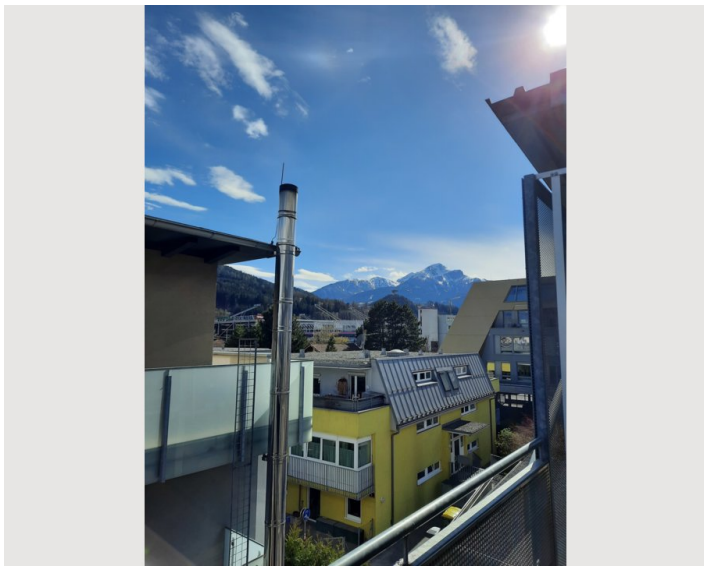
Kitchen

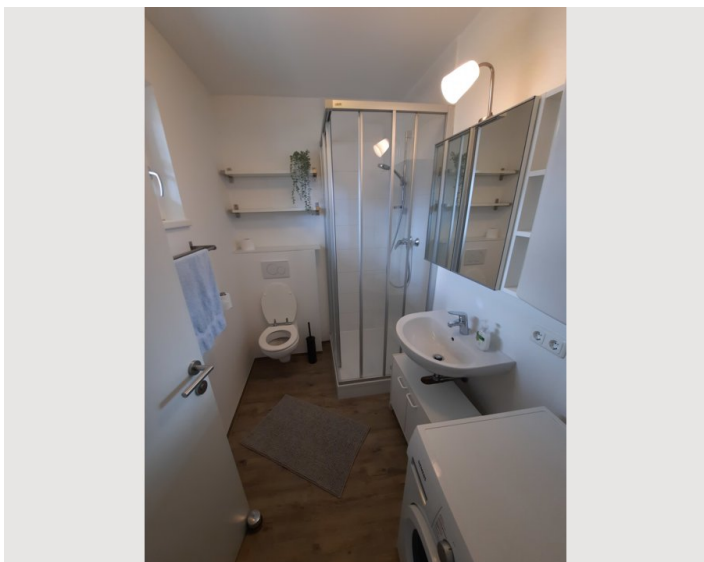
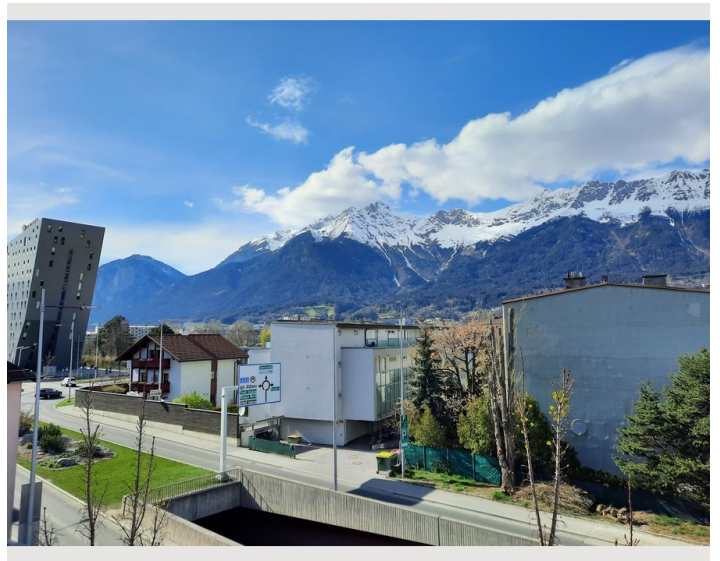
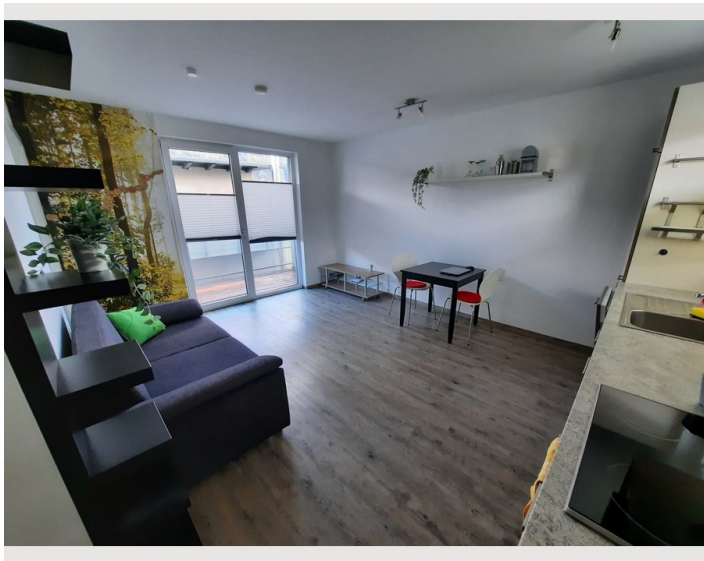
- Private kitchen
- Glasses/Tableware
- Dishwasher
- Cooking utensils
- Espresso machine
- Microwave

Informations




- Suitable for construction workers
- Private entrance
- Bicycle room free of charge
- Smoking not allowed
- Pets forbidden



Picture gallery





Infrastructure

-  1min walk
-  2min walk
-  8min by bus

-  12min by car
-  15min by bus

A grocery shop, a take-away, and a pharmacy are just around the corner. The railway station and the city center can be conveniently reached by bus within 8 and 15min respectively. The airport is 12min away by car and 30min by bus.

Location

