



2 ROOM APARTMENT, 1040 VIENNA

Mittersteig

Object number: IYYD1

[View and rent online](#)

Bright 2 room apartment with spacious kitchen, bathroom, separate toilet, 3rd floor with elevator, very quiet courtyard side in the best location of the 4th district.

Period	08/12/2025 - 08/01/2026
Number of persons	2
Total incl. VAT.	€ 2.751,04
Security deposit	€ 2.100,00



Living space

65m²



Maximum occupancy

3 Persons



Complete accommodation [?]

1 Private bathroom 1 Separated bedroom



3. floor

Elevator available



Check-in

13:00 - 21:00 Clock



Check-out

00:00 - 11:00 Clock

Sleeping options

Sleeping room



1x Double bed (1,40 m x 2 m)



1x Sofa bed (1 person)

Descripton of accommodation

The apartment is minimalistic and charmingly furnished, very bright on the 3rd elevator floor and faces 2 quiet, green inner courtyards. The bedroom can be darkened and has a French double bed. In the living room there is a sofa and a sofa bed. The kitchen is fully equipped and spacious with a dining table for 4 people. All rooms (kitchen, living room, bedroom) can be accessed separately.

Bathroom with shower, separate toilet.

All rooms are heatable.

Quiet house with respectful neighbors in a beautiful location.

Equipment & Features



Basic equipment

- Internet/Wifi
- Towels
- Vacuum cleaner
- Hairdryer
- Bedclothes
- Private toilet
- Cleaning utensils



First supply

- Toilet paper
- Soap



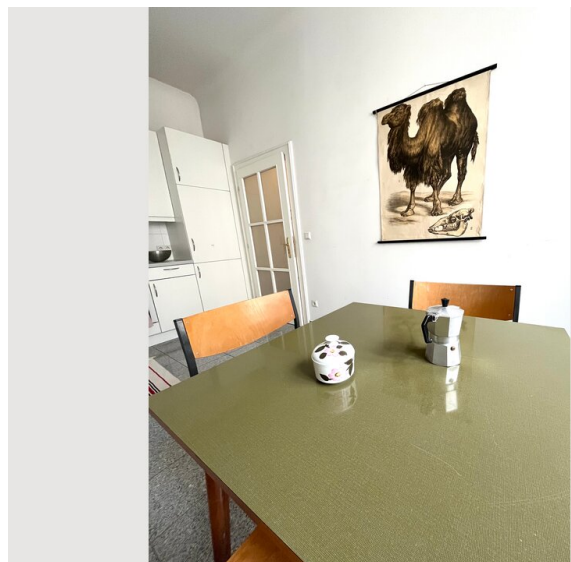
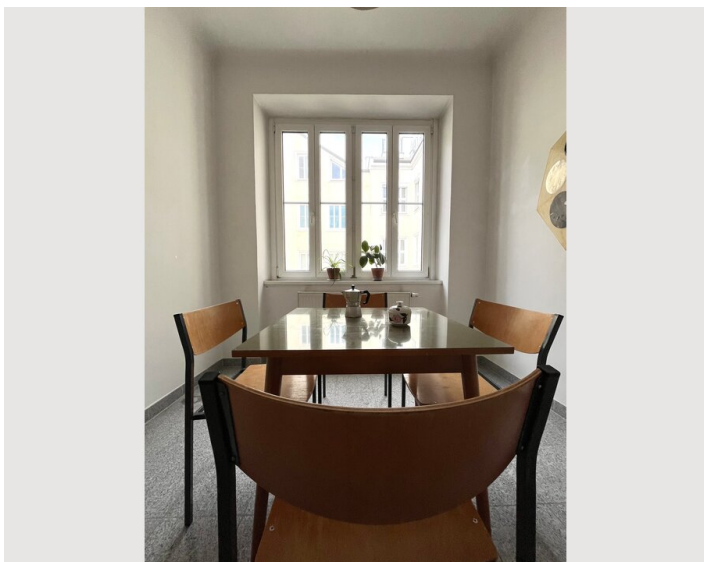
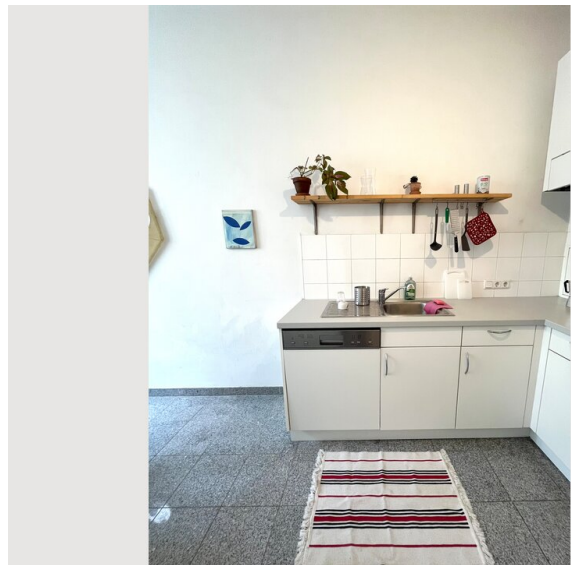
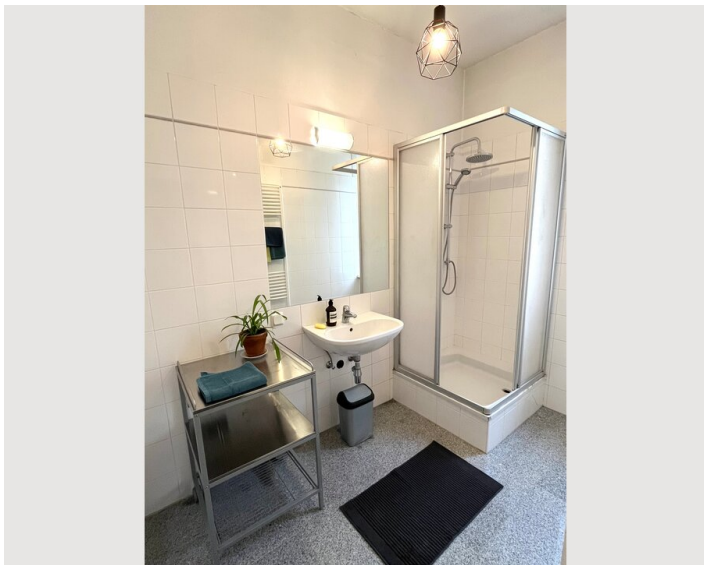
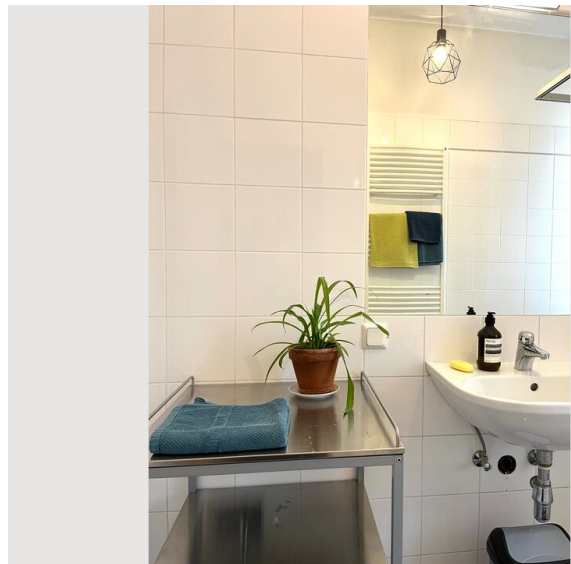
Kitchen

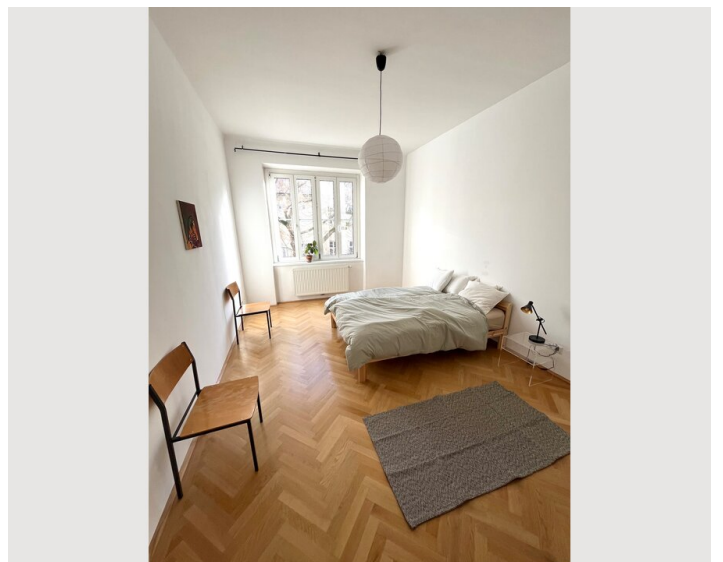
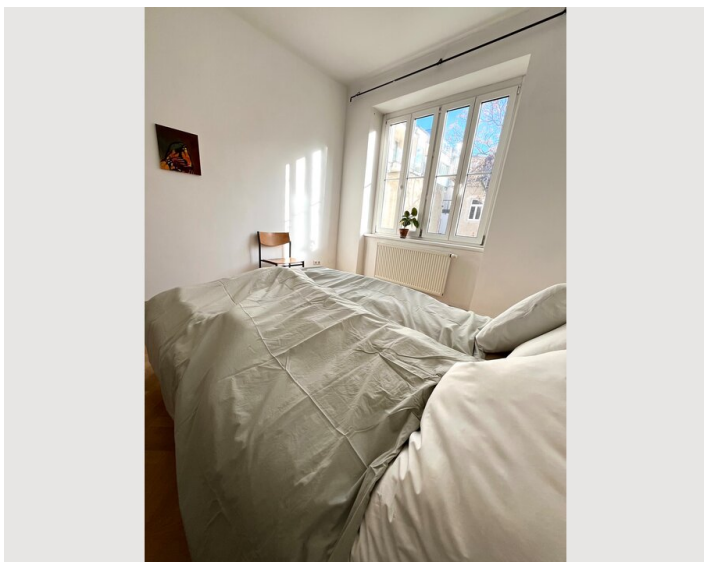
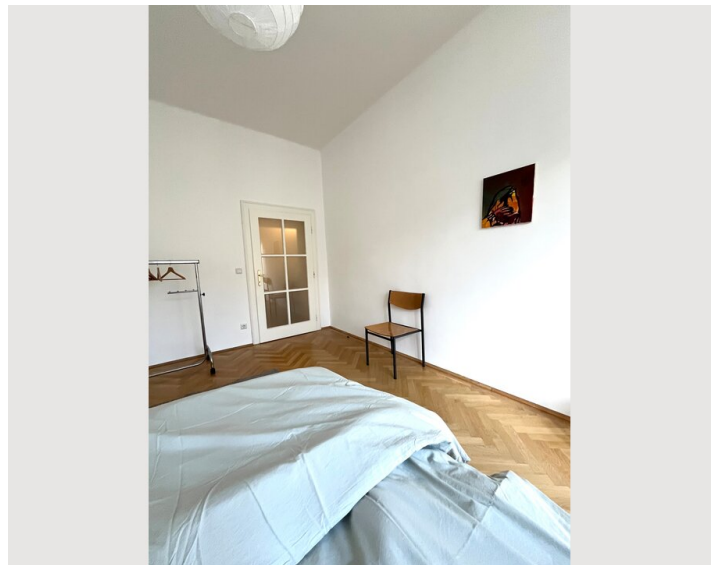
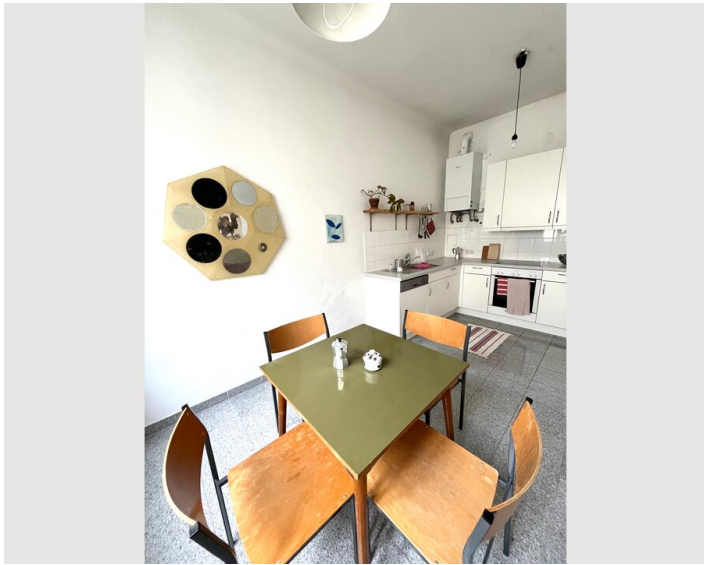
- Private kitchen
- Glasses/Tableware
- Dishwasher
- Cooking utensils
- Espresso machine
- Microwave

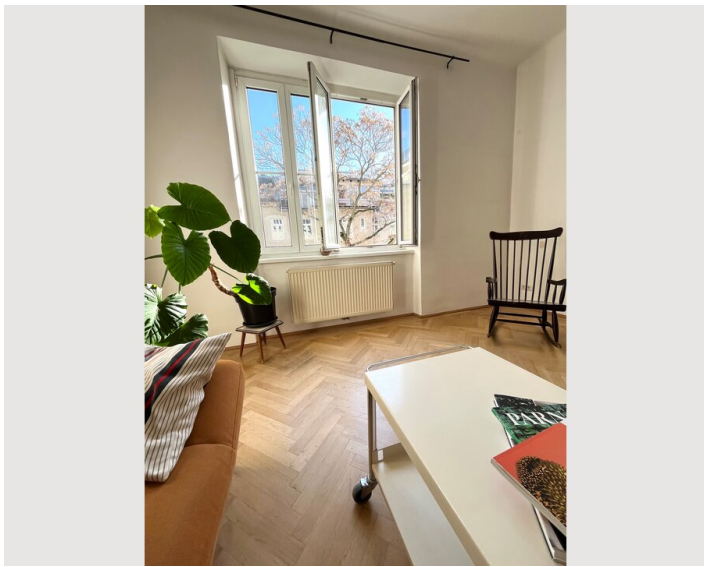
Informations

- Suitable for children
- Short-term parking zone subject to a charge
- Pets forbidden
- Bicycle room free of charge
- Smoking not allowed
- Private entrance
- Regular cleaning at extra cost

Picture gallery







Infrastructure



Supermarkets, bakeries, cafes, restaurants, Naschmarkt, streetcar, bus, metro U1, U4 all within walking distance.

Location

