



2 ZIMMER WOHNUNG, 1160 VIENNA

Cozy Apartment with garden and terrace

Object number: MYVA1

[View and rent online](#)

Period	12/08/ - 12/09/2025
Number of persons	2
Total incl. VAT.	€ 2.440,00
Security deposit	€ 1.800,00

My extraordinary apartment is located directly at the subway station Thaliastrasse. The self-check-in is super easy and works with an electronic lock. Feel at home in the fully equipped apartment. Wifi is of course also available. Highlight: The quiet



Living space

55m²



Maximum occupancy

5 Persons



Complete accommodation [?]

1 private bathroom 1 Separated bedroom 1 Living-Sleepingroom



Ground floor

Elevator available



Check-in

15:00 - 00:00 Clock



Check-out

00:00 - 10:00 Clock

Sleeping options

Sleeping room



1x Double bed (1,60 m x 2 m)

Living and sleeping



1x Double bed (1,60 m x 2 m)



1x Sofa bed (1 person)

Descripton of accommodation

The entire apartment was completely renovated in 2019 and is in a perfect condition. The result is a great combination of the charm of Vienna's old building (room height 3.40m) and modern furnishings. There is underfloor heating throughout the apartment. The spacious terrace in the courtyard, which also impresses with its quiet atmosphere, was built in 2020 and invites you to spend some cozy hours outdoors on warm days.

Equipment & Features



Basic equipment

- Terrace
 - Internet/Wifi
 - Private washing machine
 - Bedclothes
 - Private toilet
 - Iron & ironing board
 - Hairdryer
 - Garden
 - TV
 - Private dryer
 - Towels
 - Vacuum cleaner
 - Cleaning utensils
-



First supply

- Toilet paper
 - Soap
 - shampoo
 - Nespresso capsules
-



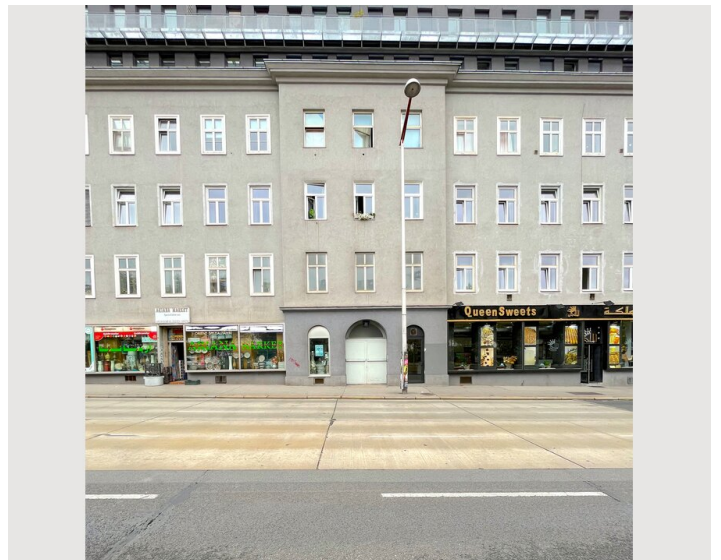
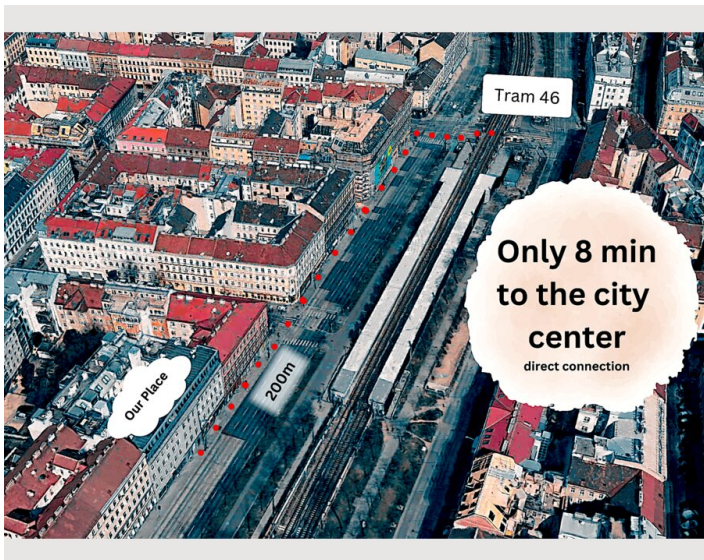
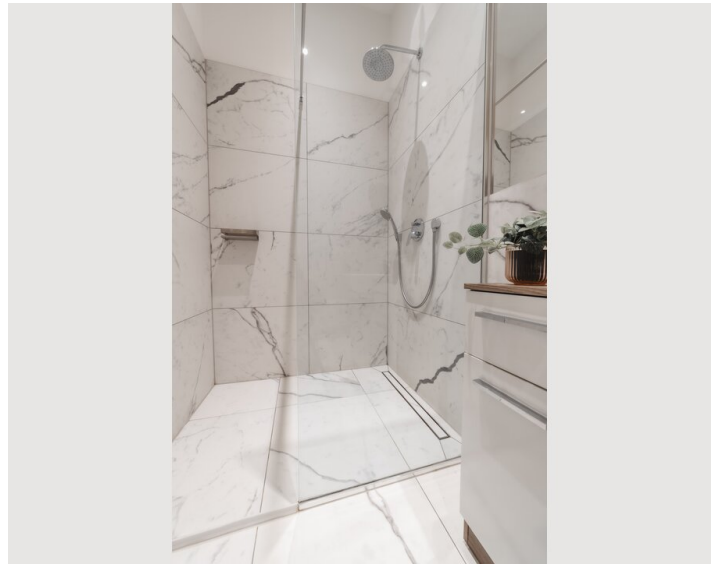
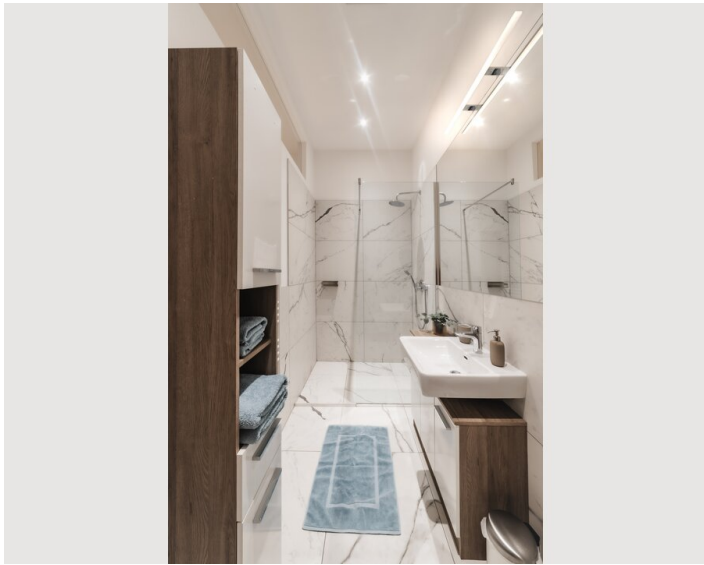
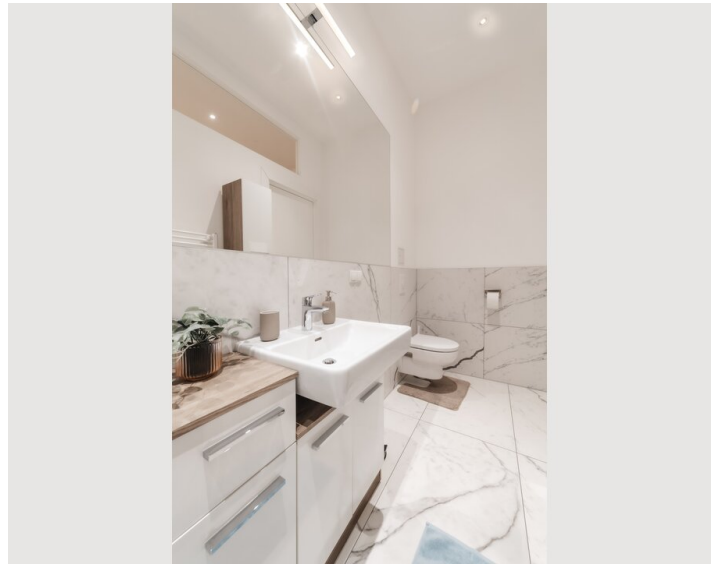
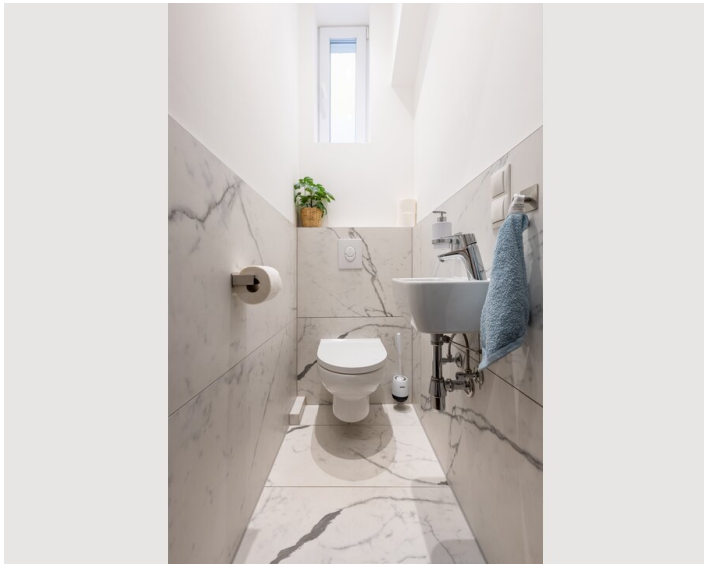
Kitchen

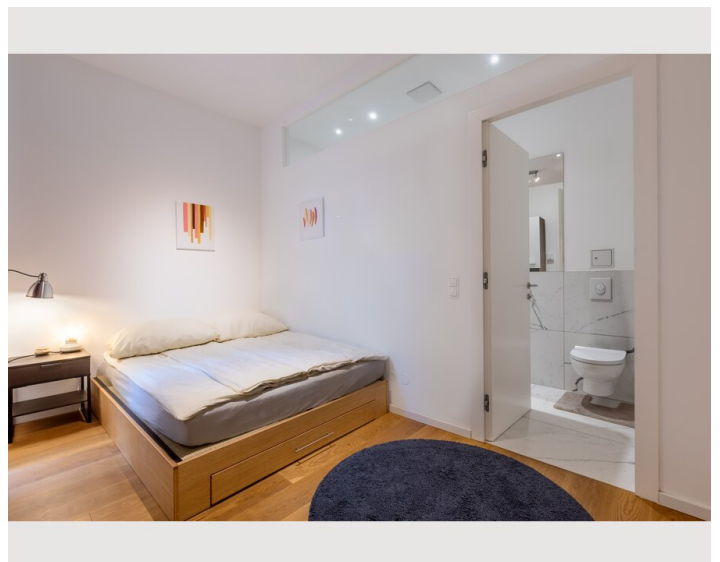
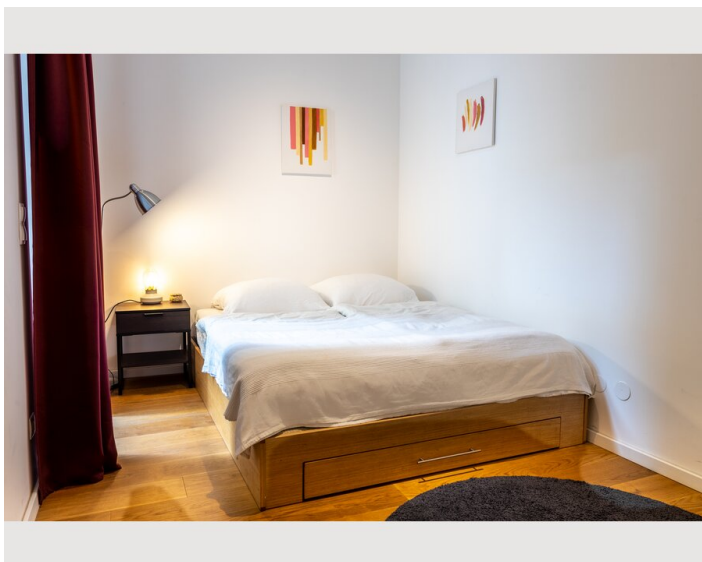
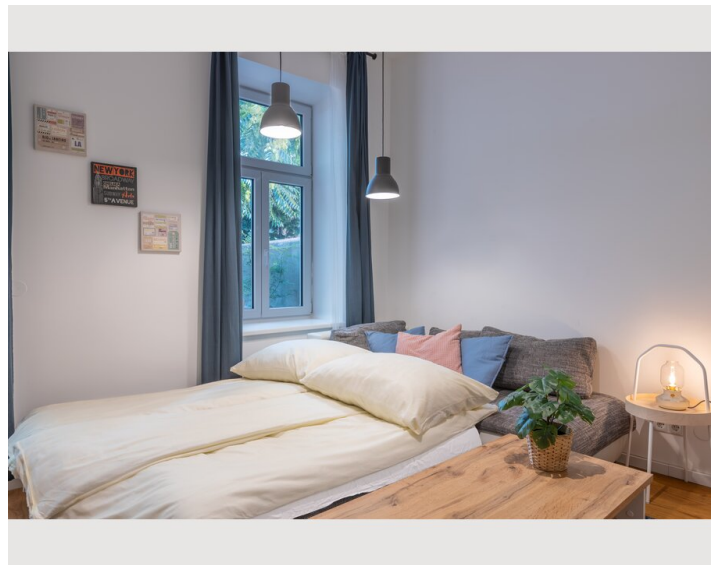
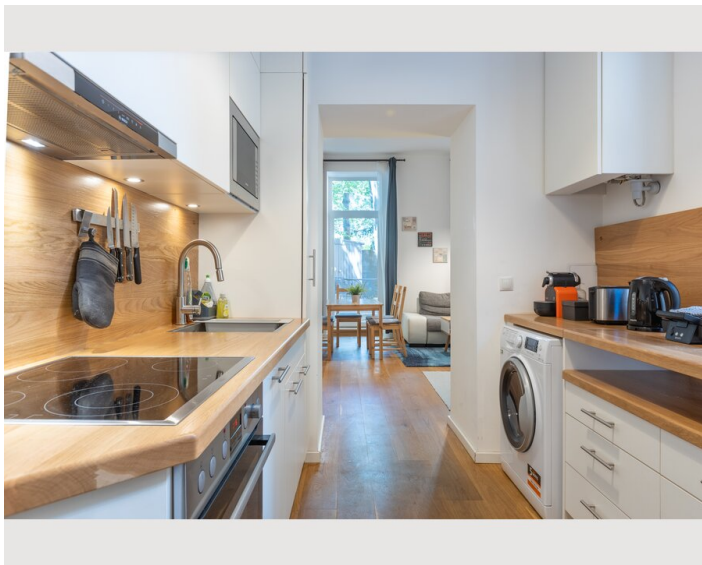
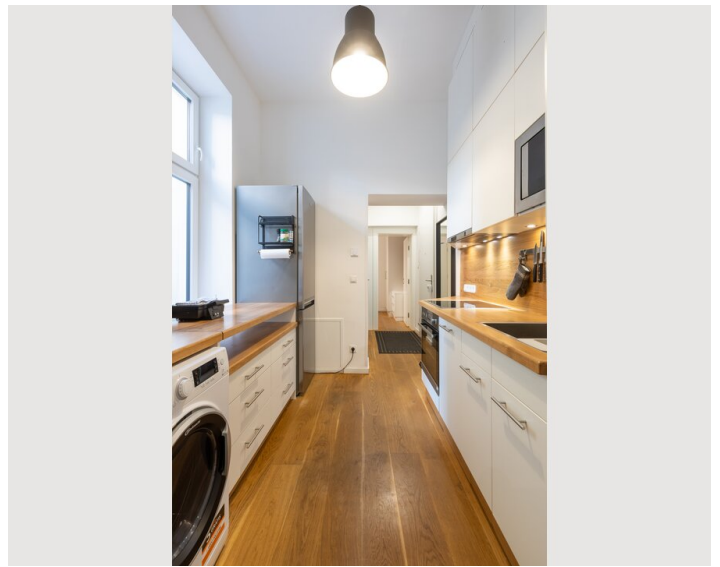
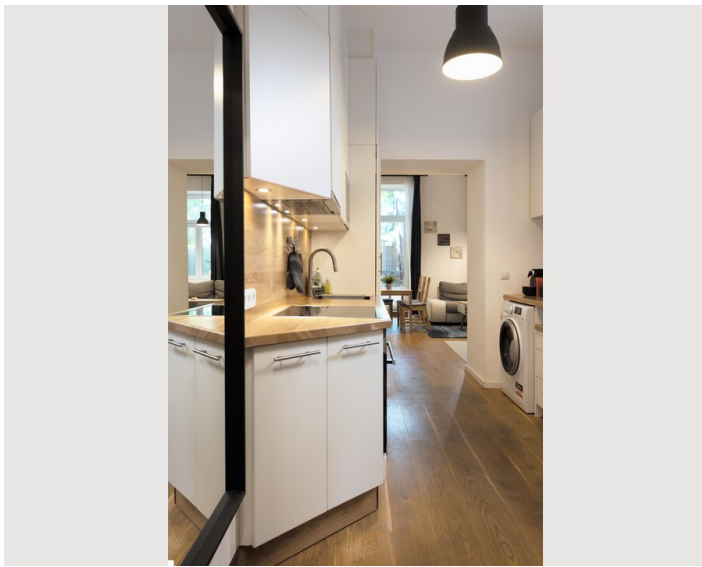
- Private kitchen
- Espresso machine
- Microwave
- Glasses/Tableware
- Dishwasher

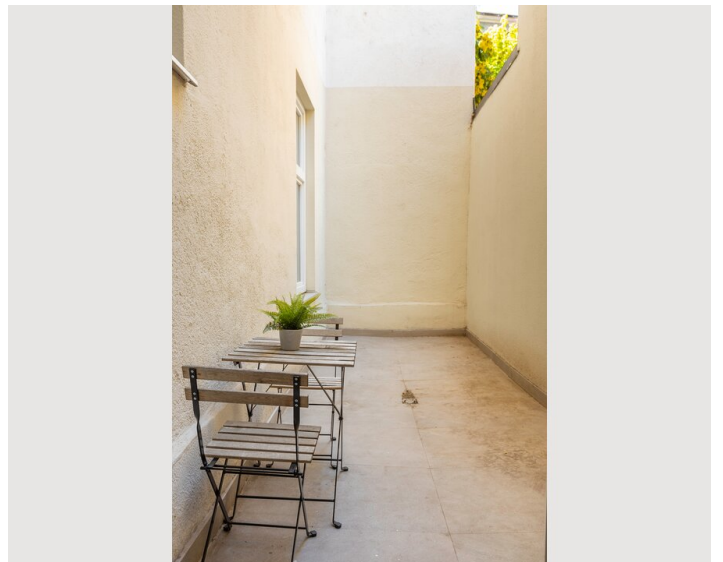
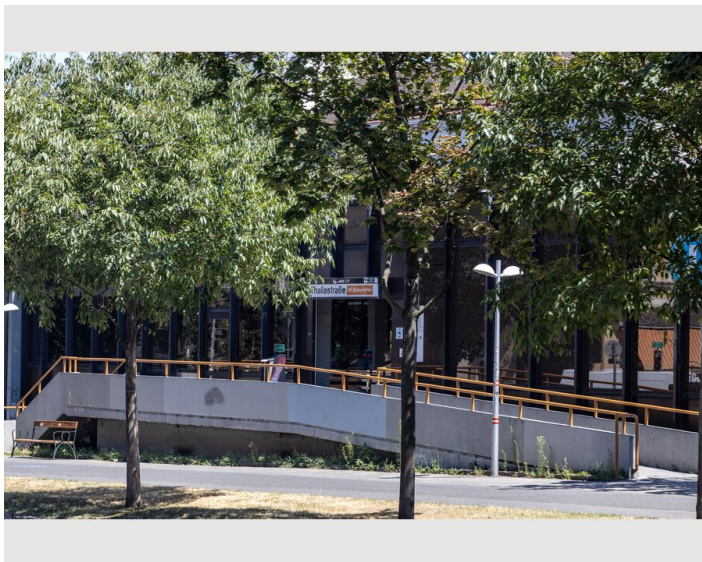
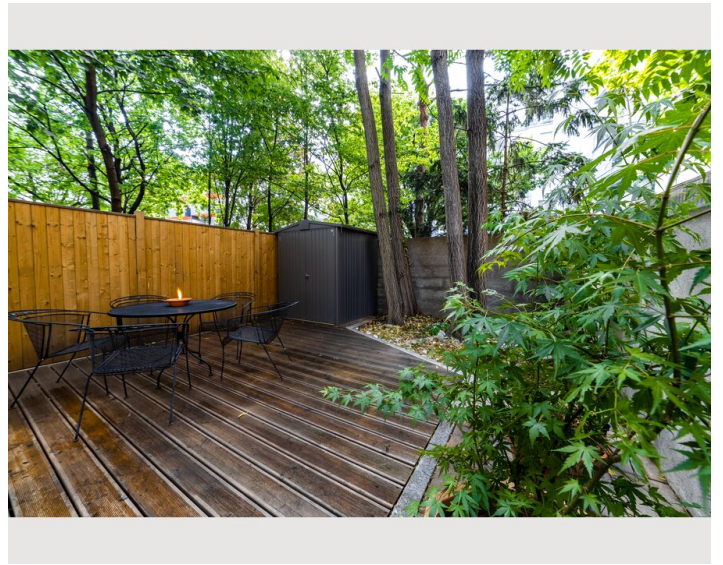
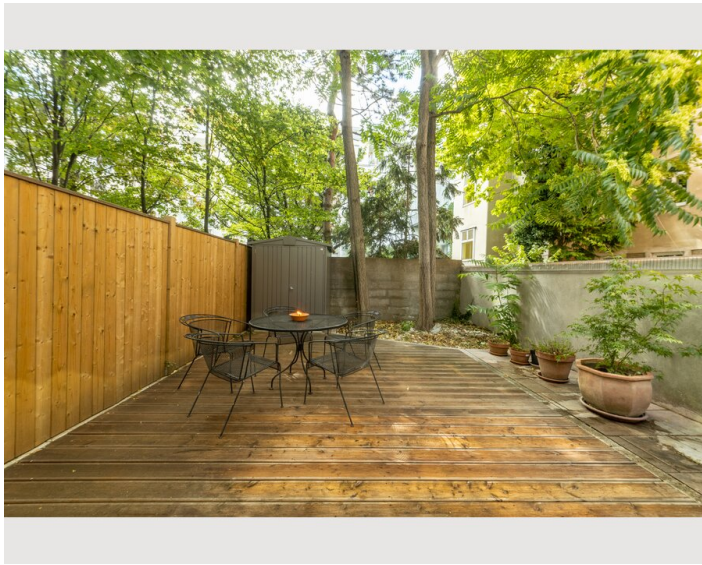
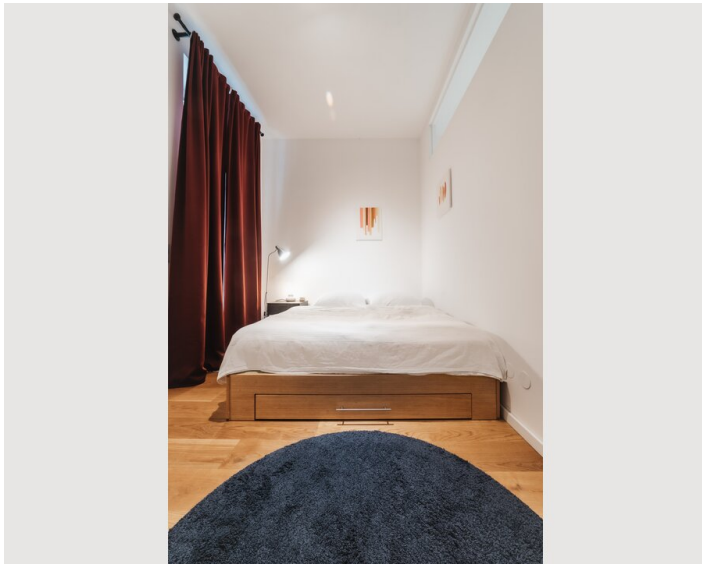
Informations

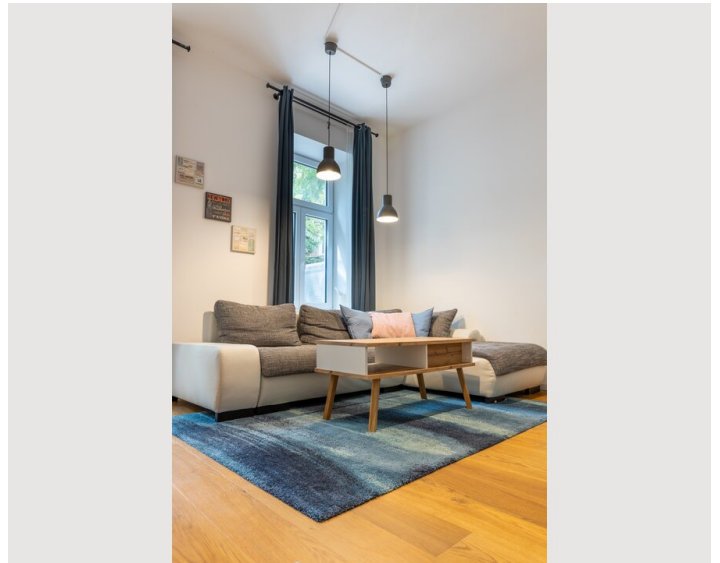
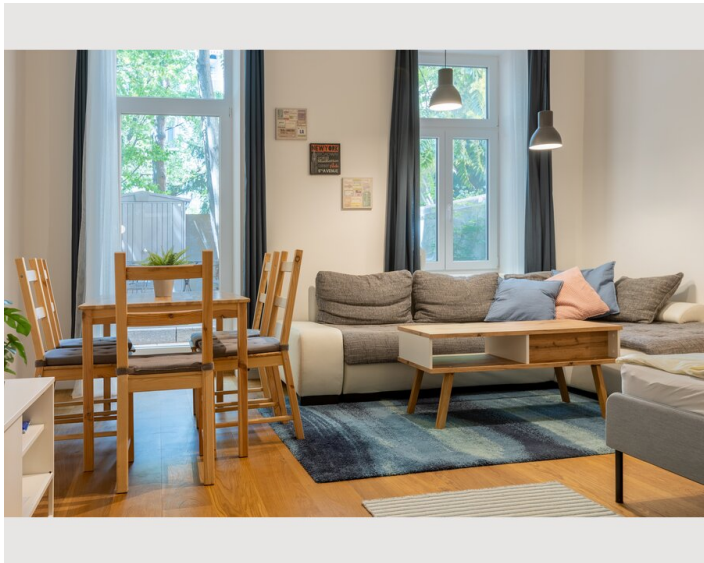
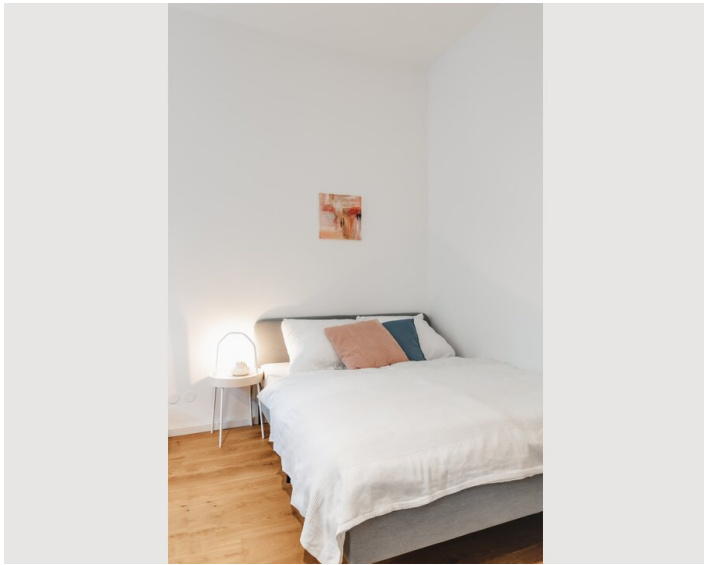
- Suitable for children
- Short-term parking zone subject to a charge
- Pets forbidden
- Smoking not allowed
- Private entrance
- Regular cleaning at extra cost

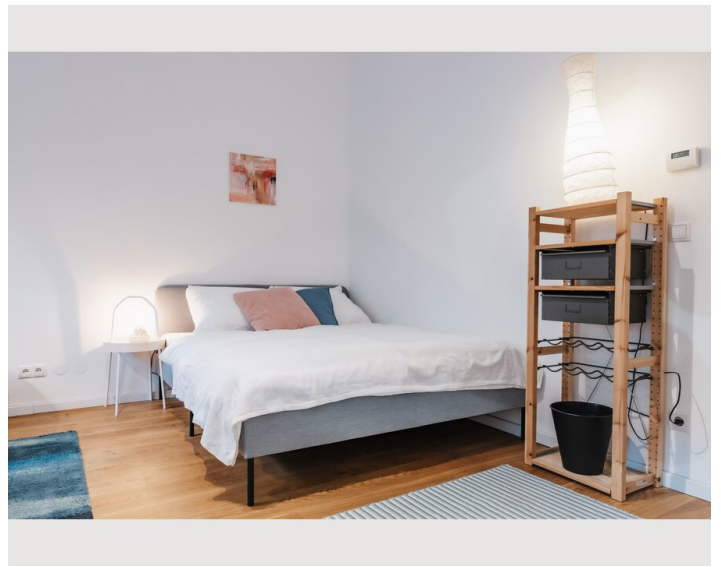
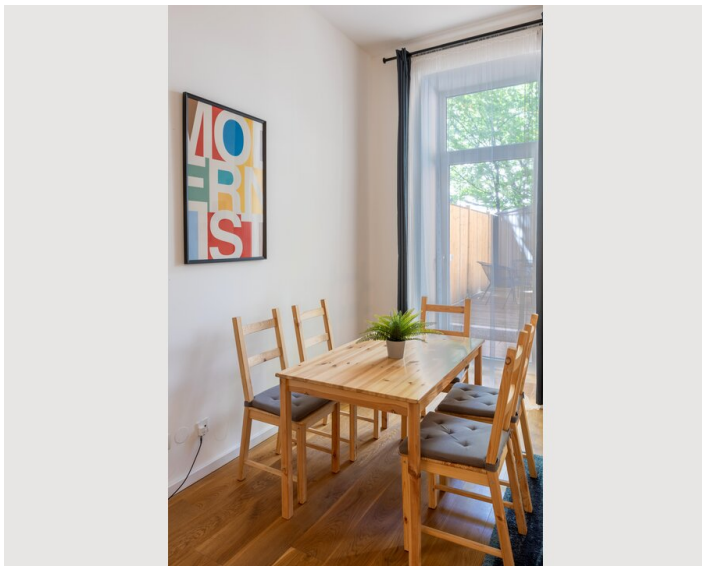
Picture gallery












Infrastructure

 directly on the other side of the street

My extraordinary apartment is located directly at the subway Station Thaliastraße and is therefore perfectly connected to the public transport network. Directly opposite is the district of Neubau, one of the hippest districts in Vienna. The quiet private terrace makes the apartment a peaceful retreat in the middle of the city center.

Location

