

STUDIO APARTMENT, 1200 VIENNA

Apartment Augarten - lovely Apartment near the centre

Object number: SCHD2

[View and rent online](#)

Period	15/06/ - 15/07/2025
Number of persons	2
Total incl. VAT.	€ 1.369,94
Security deposit	€ 1.000,00

The apartment is located right next to the Augarten. The centre can be reached in a few minutes. The apartment is newly renovated, comfortably furnished and perfectly suited for couples. The surroundings towards Augarten are quiet.



Living space

32m²



Maximum occupancy

2 Persons



Complete accommodation ?

1 private bathroom 1 Separated bedroom



4. floor

Elevator available



Check-in

14:00 - 20:00 Clock



Check-out

00:01 - 11:00 Clock

Sleeping options

Sleeping room



1x Double bed (1,40 m x 2 m)

Descripton of accommodation

The apartment is a perfect retreat from the hustle and bustle of the city. Due to the semi-central location, the high-quality furnishings and the green zone Augarten, it is also very suitable for longer stays.

The apartment can be reached with an elevator. The two large windows face the Karajangasse. Directly opposite is a grammar school which means that there is no one around in the evening. The whole interior is new and combines modern furnishing with classic old building. The floors are of high quality and are made of parquet flooring and large-area tiles. There are various design objects as well as a unique room divider in the apartment.

The apartment is well equipped and has all appliances needed in a household (dishwasher, oven, stove, refrigerator, freezer, washing machine, Nespresso machine, hair dryer, Wifi, TV with NETFLIX and Amazon Prime)

Equipment features



Basic equipment

- Internet/Wifi
- Private washing machine
- Towels
- Hairdryer
- TV
- Bedclothes
- Private toilet



First supply

- Toilet paper
- Nespresso capsules
- Soap



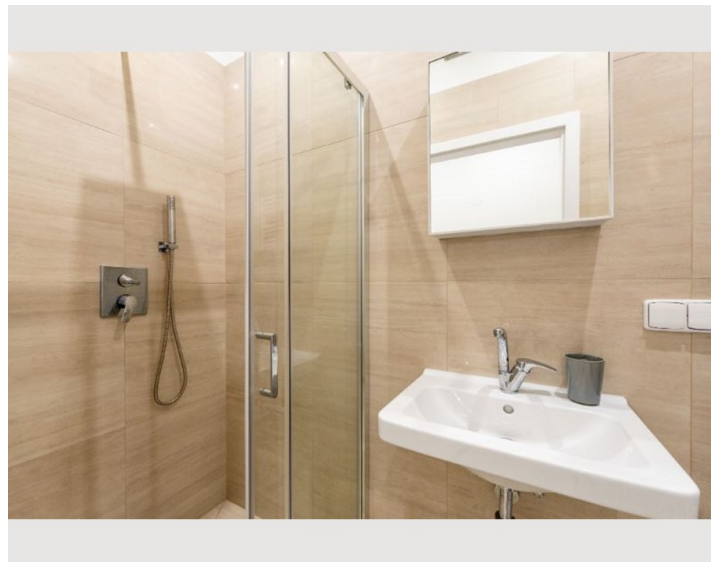
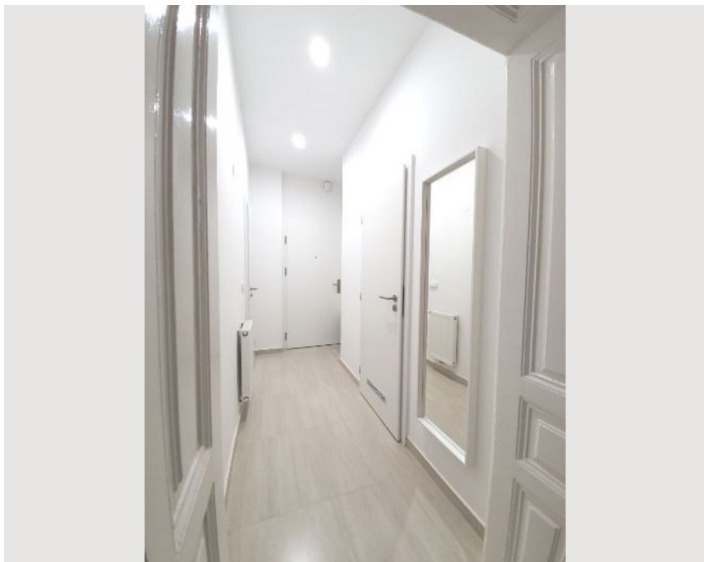
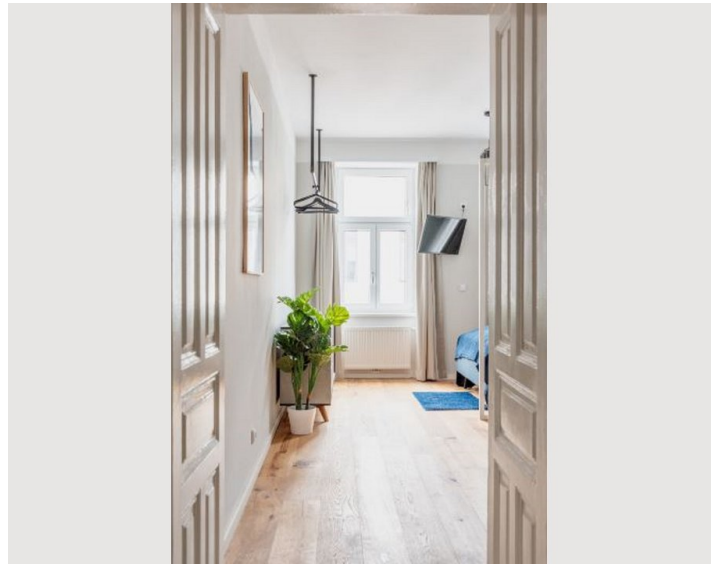
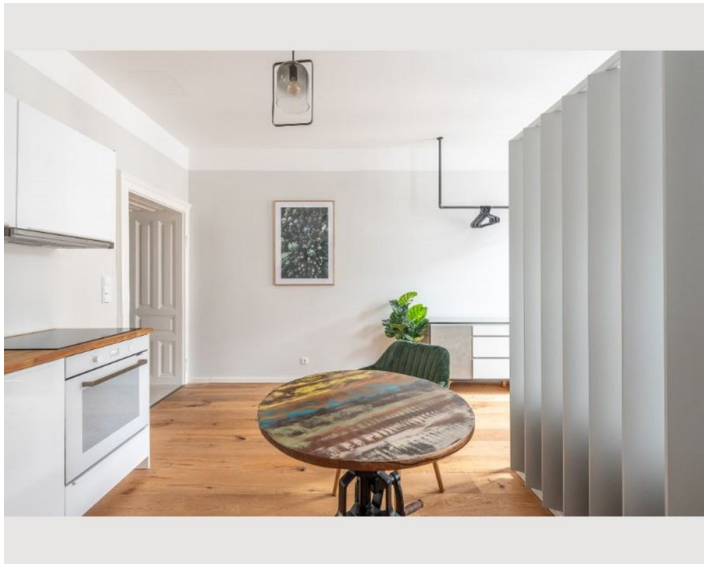
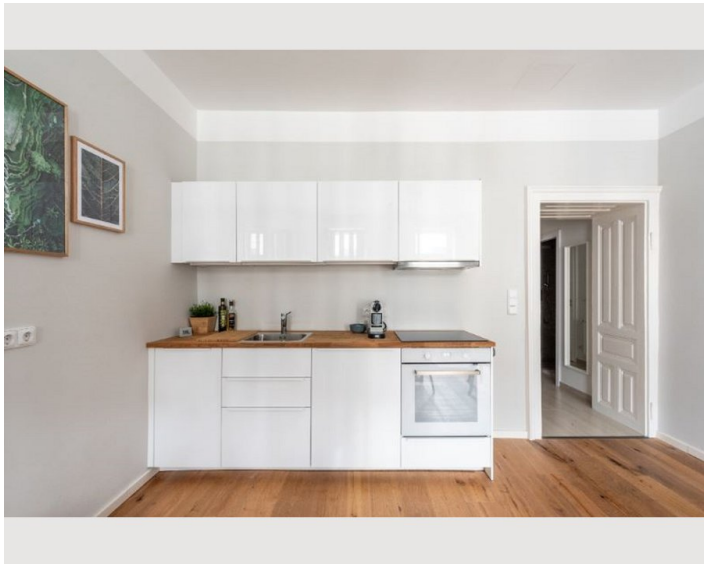
Kitchen

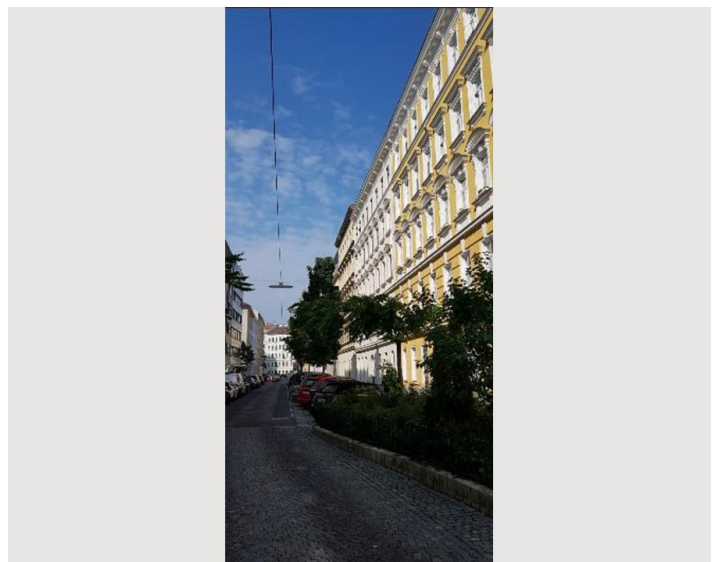
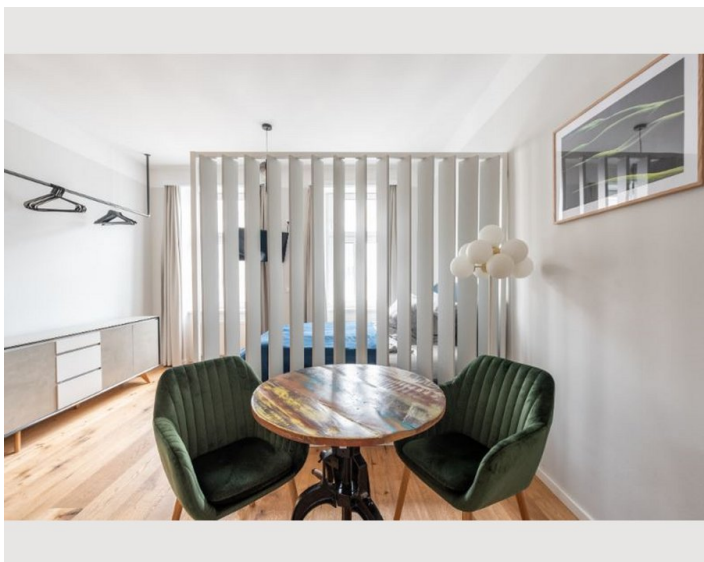
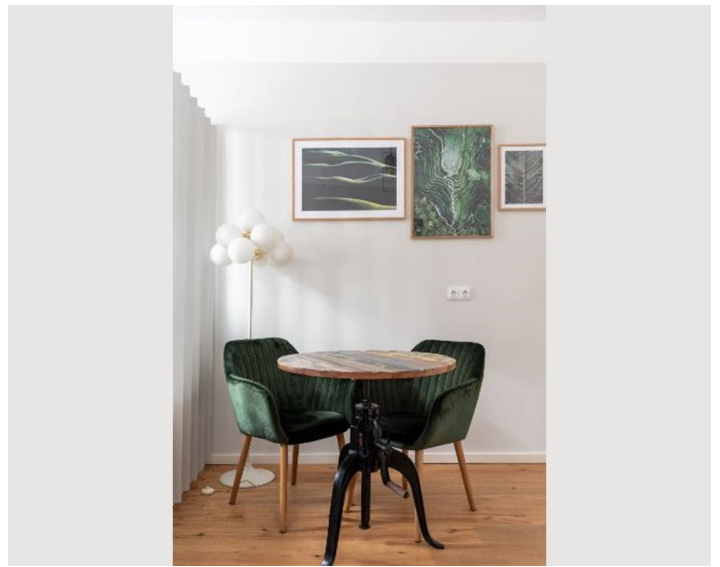
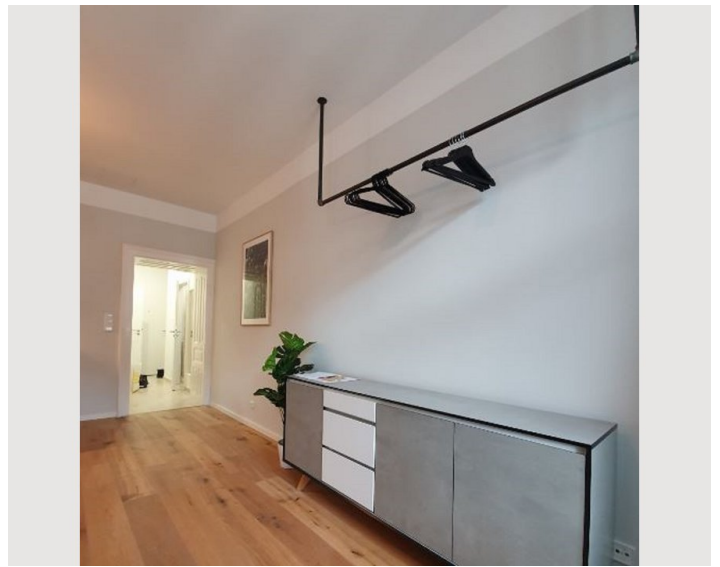
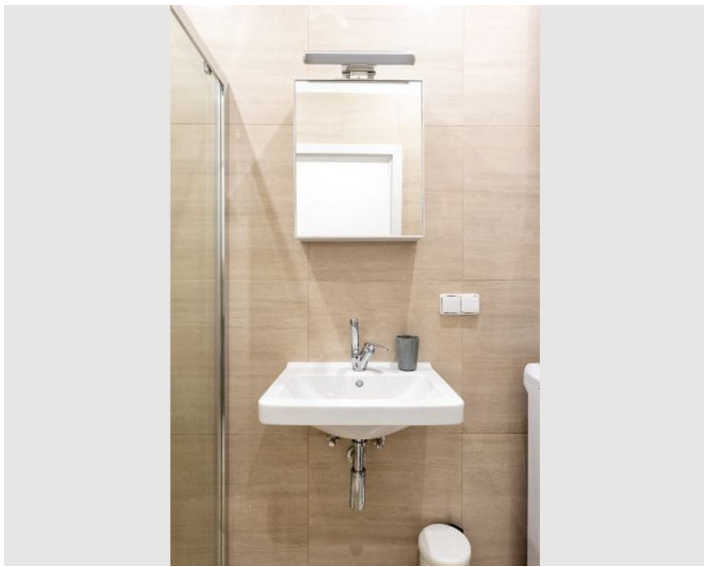
- Private kitchen
- Glasses/Tableware
- Dishwasher
- Cooking utensils
- Espresso machine

Informations

- Suitable for construction workers
- Short-term parking zone subject to a charge
- Pets forbidden
- Smoking not allowed
- Private entrance
- Regular cleaning at extra cost

Picture gallery







Infrastructure



The easiest way and with the best overview of the surroundings is to take the bus line 5A towards the city centre. Alternatively you can take the tram line 5 directly to the Praterstern or in the other direction to the Roßbauerlände. From all 3 places there are several subway lines going on afterwards. For public transport the App Quando is recommended.

Due to its location, Uber or a similar taxi or sharing app is also very cheap and recommended. This is the fastest way to get directly to the city centre at really cheap prices.

Location

