



ROOM, 1120 VIENNA

Between Schönbrunn and the city center

Object number: SDM1

[View and rent online](#)

Newly renovated, lovingly furnished apartment between Schönbrunn and the center, in a unique quiet location.

Period	31/05/ - 01/07/2026
Number of persons	2
Total incl. VAT.	€ 1.396,26
Security deposit	€ 1.000,00



Living space

38m²



Maximum occupancy

4 Persons



Complete accommodation [?]

1 Private bathroom 1 Living-Sleepingroom



Ground floor



Check-in

15:00 - 22:00 Clock



Check-out

00:00 - 10:00 Clock

Sleeping options

Living & Sleeping



1x Double bed (1,60 m x 2 m)



1x Sofa bed (2 persons)

Description of accommodation

You live in a newly renovated, lovingly furnished apartment between Schönbrunn and the city center, in a uniquely quiet location. You can reach the palace park in 10 minutes on foot and the center of Vienna in 20 minutes.

The entrance hall leads to the high-quality bathroom with walk-in shower and WC, as well as the fully equipped kitchen. You then enter the living room with a comfortable double bed and sofa bed, dining table and TV.

A terrace rounds off your stay.

Translated with DeepL.com (free version)

Equipment & Features

Basic equipment

- Balcony
- TV
- Bedclothes
- Private toilet
- Iron & ironing board
- Hairdryer
- Internet/Wifi
- Private washing machine
- Towels
- Vacuum cleaner
- Cleaning utensils

First supply

- Toilet paper
- Soap
- shampoo

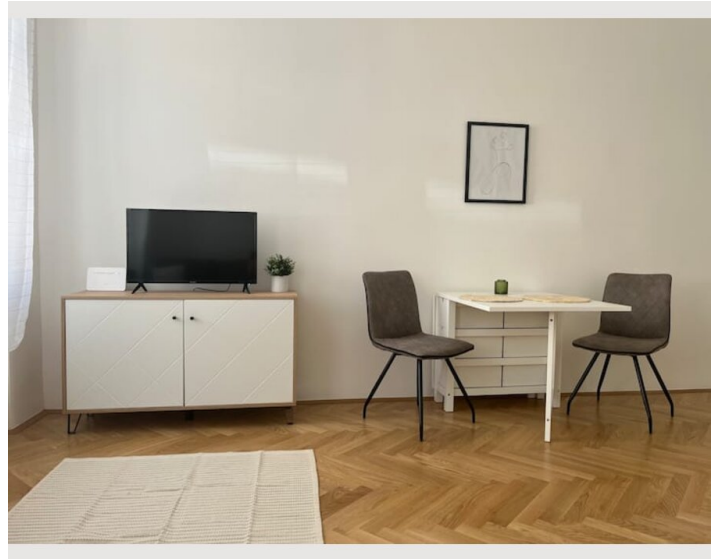
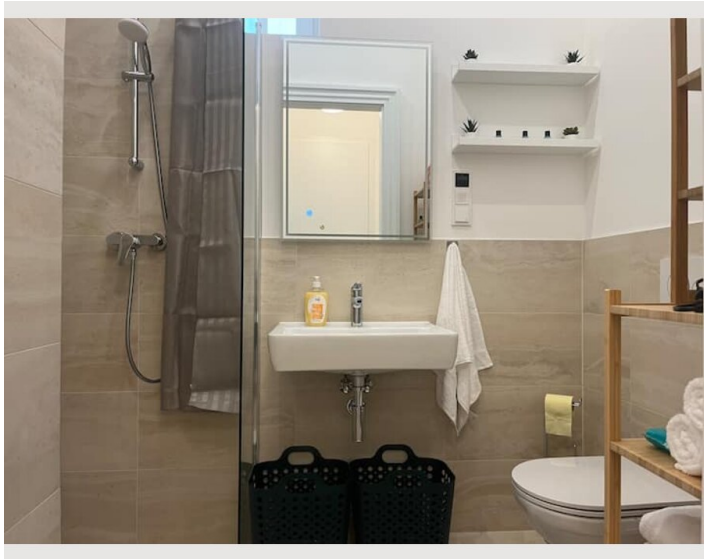
Kitchen

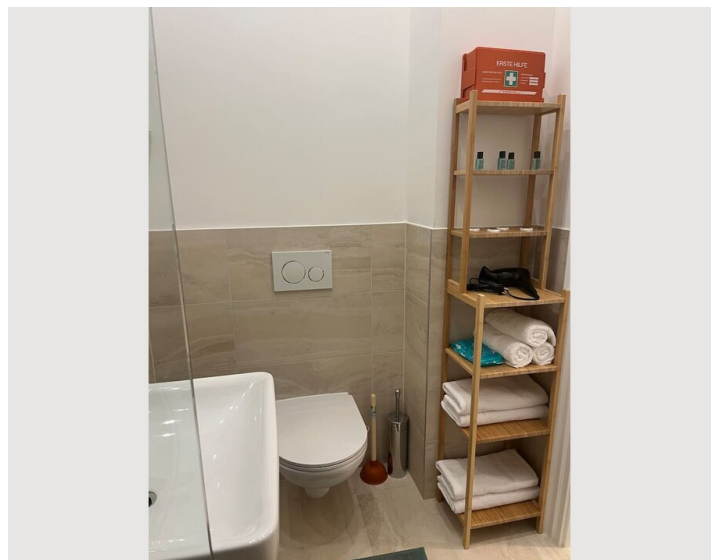
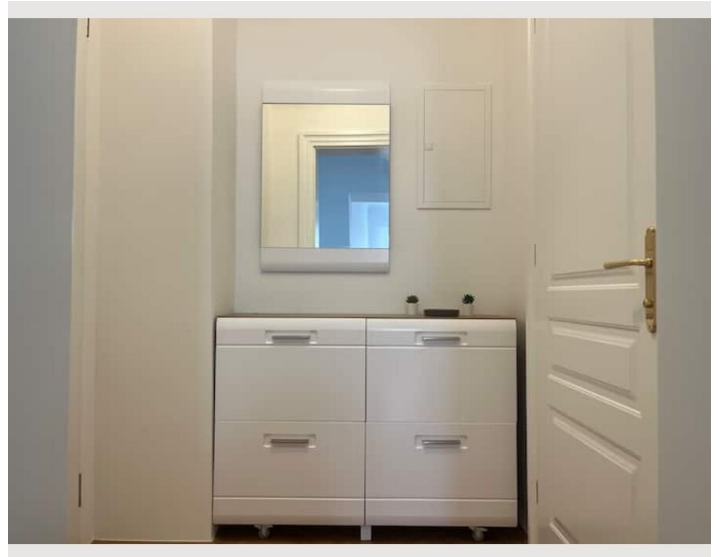
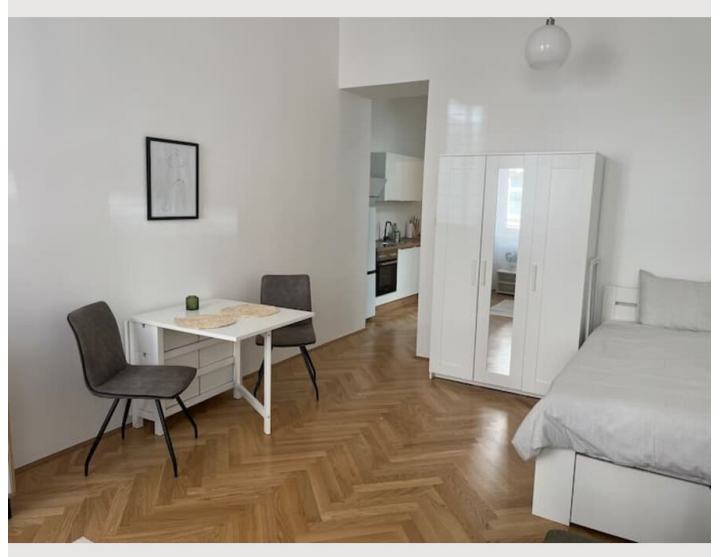
- Private kitchen
- Glasses/Tableware
- Dishwasher
- Cooking utensils
- Filter coffee
- Microwave

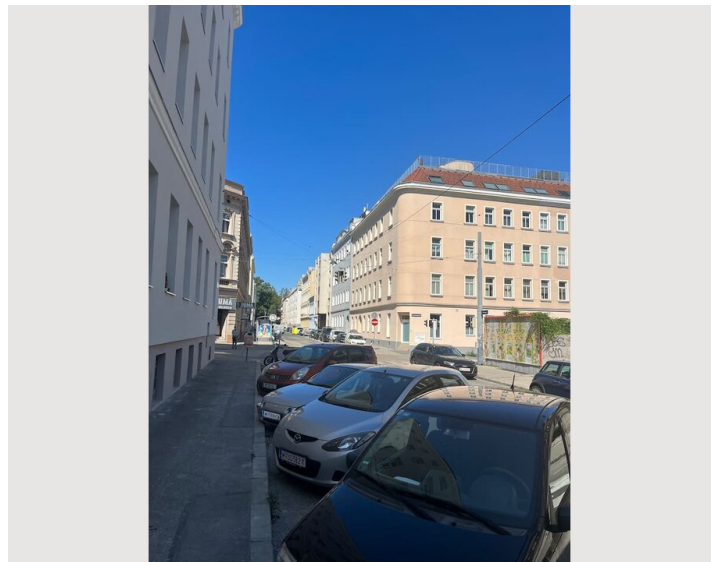
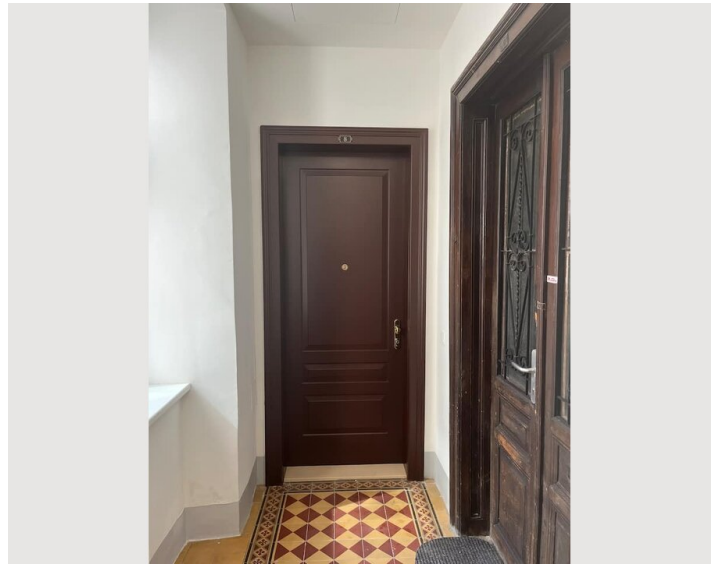
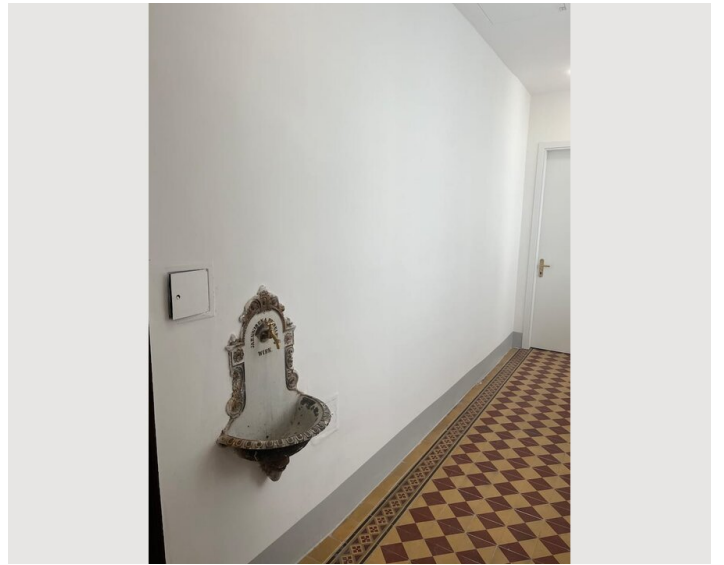
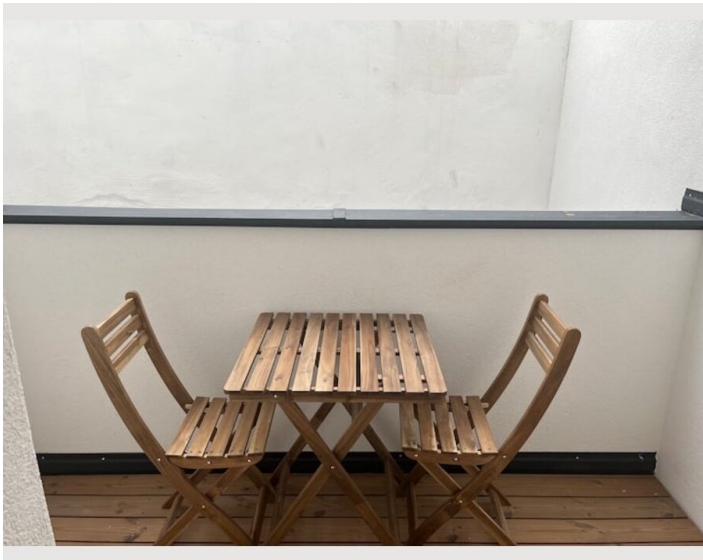
Informations

- Suitable for children
- Desk/Workplace
- Pets forbidden
- Short-term parking zone subject to a charge
- Private entrance
- Bicycle room free of charge


Picture gallery








Infrastructure


 Meidling train station - various trains, subway, bus and Badnerbahn stops


 63A Aichholzgasse/Pohlgasse


 U6 Niederhof Straße


 U4 Meidlinger Hauptstraße

 15A Ruckergasse

 Billa, 2-3 minutes on foot

 Hofer, 5 minutes on foot

 Meidlinger Markt, 10 minutes on foot

 Meidlinger Hauptstraße with various shopping opportunities from clothing to technology, books, etc.

The 63A bus stop is just a 1-minute walk away, which in turn offers very good connections to the train stations. The train and subway stations U6 Niederhof Straße, U6 Philadelphia Brücke and U4 Meidling can also be reached on foot in approx. 10 minutes.

Meidling station, also about a 10-minute walk away, offers very good connections to other regional trains.

Location

