



2 ZIMMER WOHNUNG, 5020 SALZBURG

1-bedroom apartment in Itzling

Object number: SRZA1

[View and rent online](#)

Period	12/06/ - 12/07/2025
Number of persons	2
Total incl. VAT.	€ 1.639,32
Security deposit	€ 1.200,00

Central, quietly located 2-room flat in Itzling



Living space

58m²



Maximum occupancy

2 Persons



Complete accommodation ?

1 private bathroom 1 Separated bedroom



1. floor



Check-in

10:00 - 14:00 Clock



Check-out

10:00 - 14:00 Clock

Sleeping options

Sleeping room



1x Double bed (1,80 m x 2 m)

Descripton of accommodation

The flat is located on the 1st floor of a quiet three-party house and offers 58 m² of living space with a south-west facing position. The spacious kitchen with a nice dining area and a separate pantry with its own window invites you to cook and linger.

The cosy living room leads onto a small, south-facing balcony with seating and a magnificent view of the Salzburg mountains. The spacious bedroom offers plenty of storage space. The bathroom has a bathtub and a window, as well as its own washing machine. A separate WC with window completes the offer.

There is a storage room for bicycles, and you can park for up to three hours free of charge in the short-term parking zone in front of the house.

Equipment features



Basic equipment

- Balcony
- TV
- Bedclothes
- Private toilet
- Iron & ironing board
- Hairdryer
- Internet/Wifi
- Private washing machine
- Towels
- Vacuum cleaner
- Cleaning utensils



First supply

- Toilet paper
- Soap
- shampoo
- Nespresso capsules



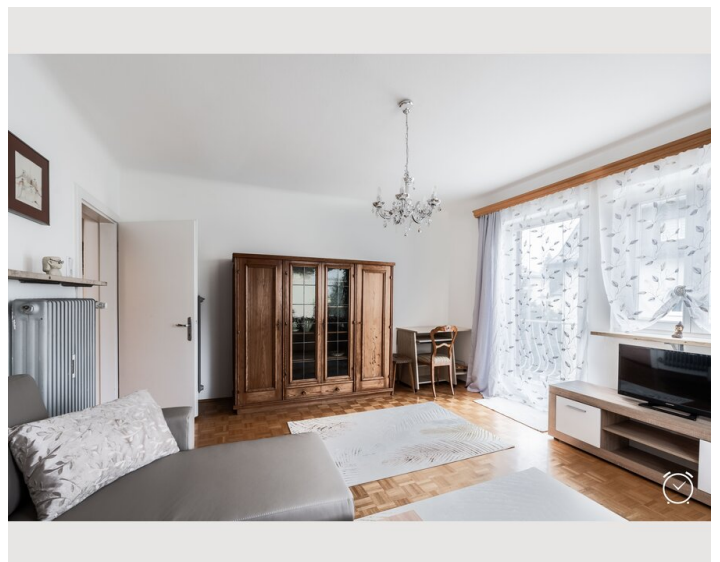
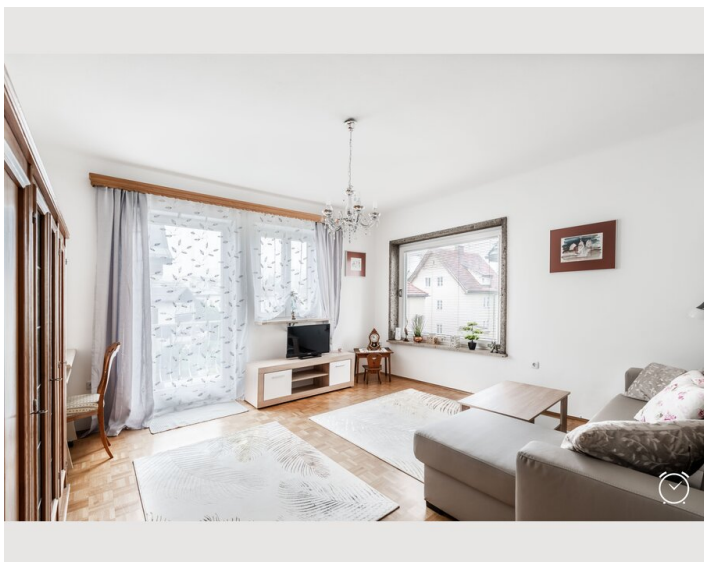
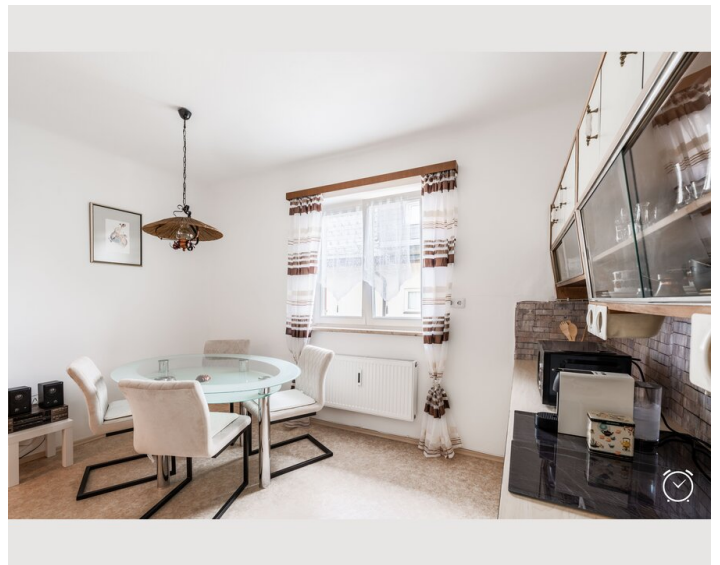
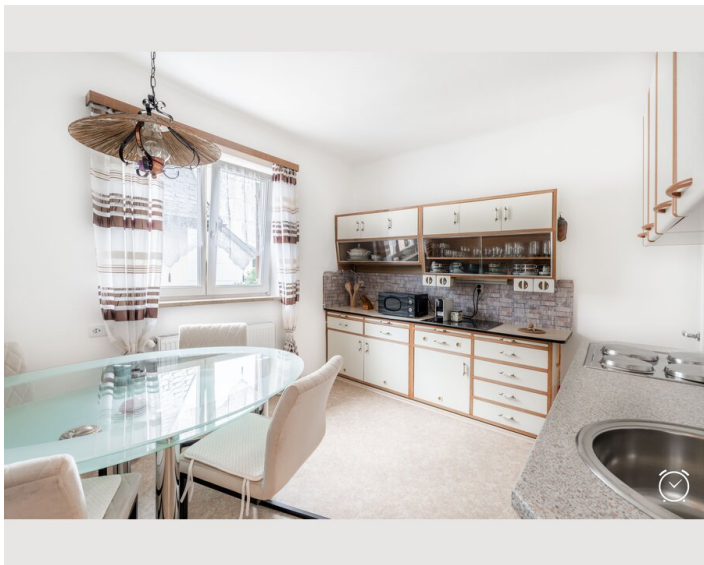
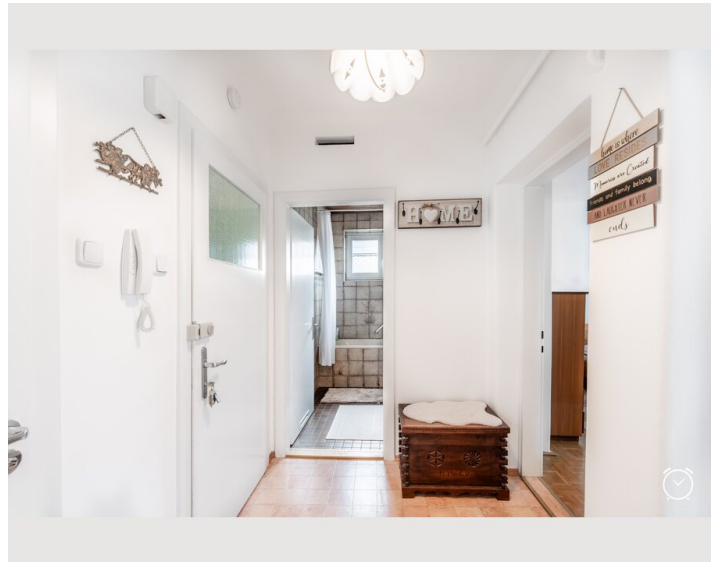
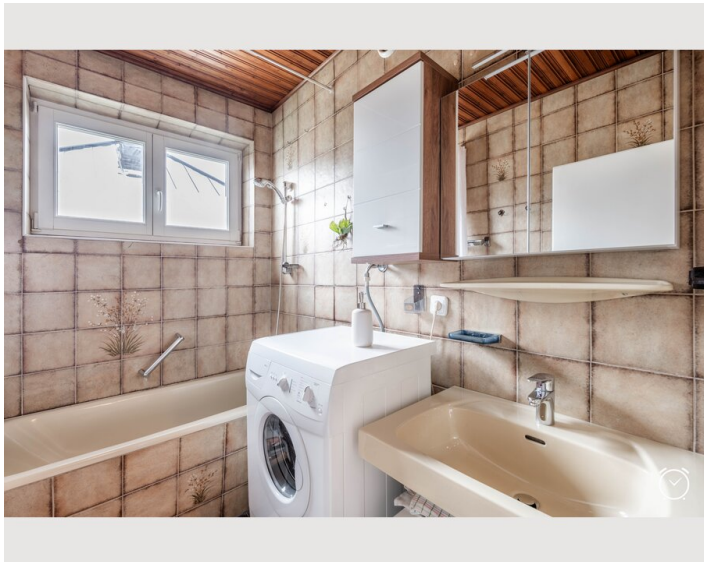
Kitchen

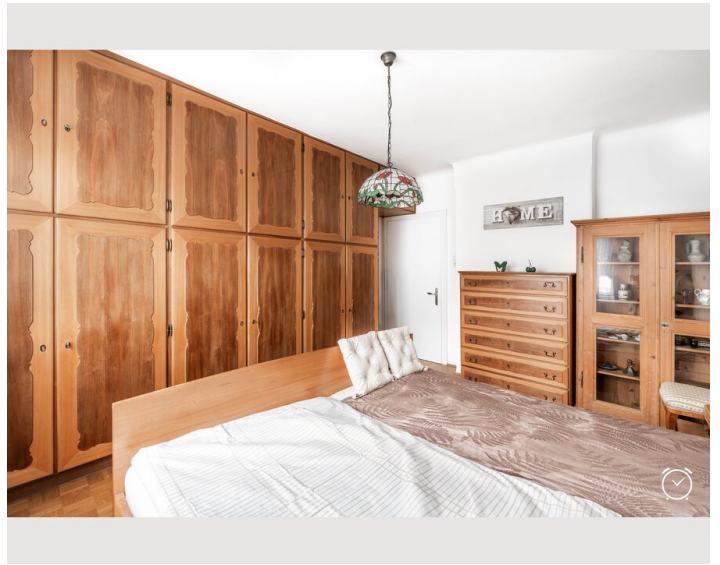
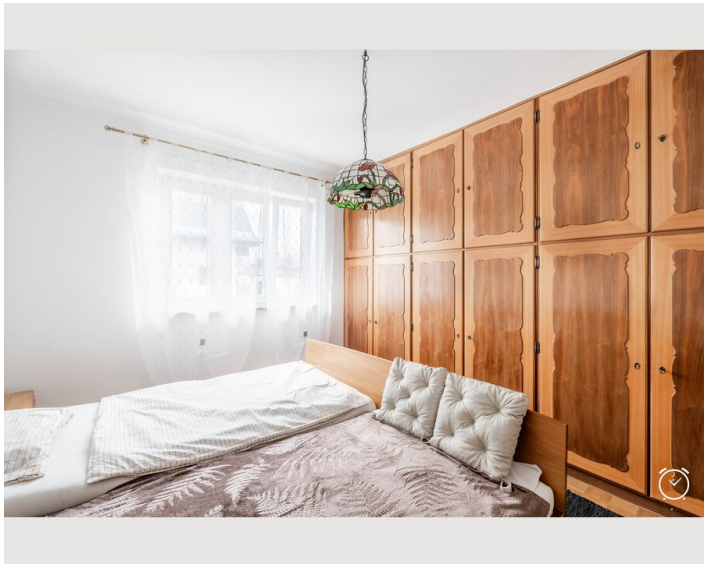
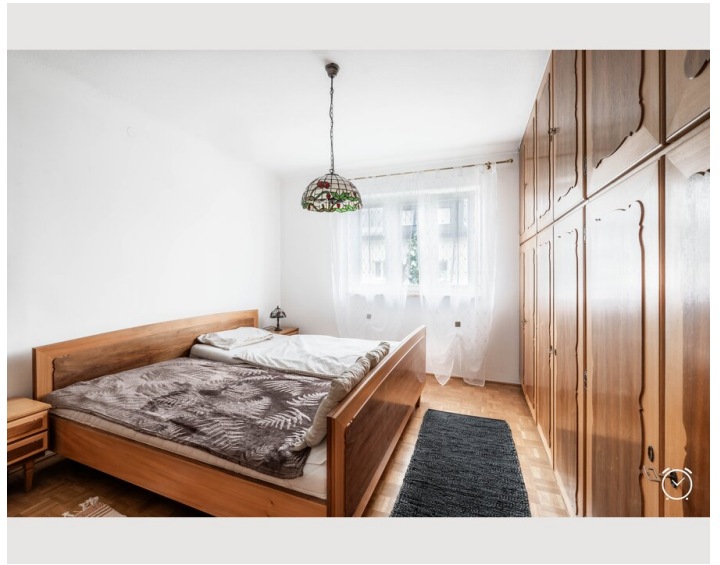
- Private kitchen
- Glasses/Tableware
- Dishwasher
- Cooking utensils
- Espresso machine
- Microwave

Informations

- Smoking not allowed
- Private entrance
- Free short-term parking zone
- Pets forbidden

Picture gallery





Video

[Goto Video](#)



Infrastructure



Central station, local shops, pharmacy, banks, restaurants, bus stop, local railway and motorway access in the immediate vicinity. The Salzach cycle path is just a few minutes away and leads directly into the historic centre of Salzburg.

Location

