

2 ZIMMER WOHNUNG, 1100 VIENNA

## Proximity main railwaystation

Object number: PUQK1

[View and rent online](#)

<b>Period</b>	07/07/ - 07/08/2025
<b>Number of persons</b>	2
<b>Total incl. VAT.</b>	€ 2.420,82
<b>Security deposit</b>	€ 1.700,00

The apartment impresses with its brightness and friendliness as well as the large five-window living room in a semicircle with a view of Keplerplatz. The house is located 50 meters from the exit to U1 station Keplerplatz, one stop from Vienna Central



### Living space

85m<sup>2</sup>



### Maximum occupancy

4 Persons



### Complete accommodation <sup>?</sup>

1 private bathroom 1 Separated bedroom 1 Living-Sleepingroom



### 3. floor

Elevator available



### Check-in

10:00 - 18:00 Clock



### Check-out

10:00 - 18:00 Clock

## Sleeping options

### Sleeping room



1x Double bed (1,80 m x 2 m)

### Living and sleeping



2x Sofa bed (1 person)

## Descripton of accommodation

The apartment has recently been completely renovated and furnished to a high standard. It is very bright and friendly. The large living room (approx. 35 square meters) in a semicircle has five windows and has been furnished with a writing desk, chest of drawers and three (!) spacious sofa couches, two of which can be converted into sleeping accommodation. The third sofa can be used as an emergency bed (for a child). The separate bedroom has a large, stylish double bed, a desk/work table, a wardrobe and a chest of drawers. The bathroom with bathtub and shower has been completely redesigned and tastefully tiled. The fully equipped kitchen has a dining area with seating for three people, a large electric stove, large fridge and high-quality modules with real wood fronts. In the anteroom there is a table with seating for up to three people.

## Equipment & Features



### Basic equipment

- Internet/Wifi
- Private washing machine
- Vacuum cleaner
- Cleaning utensils
- TV
- Private toilet
- Iron & ironing board
- Hairdryer



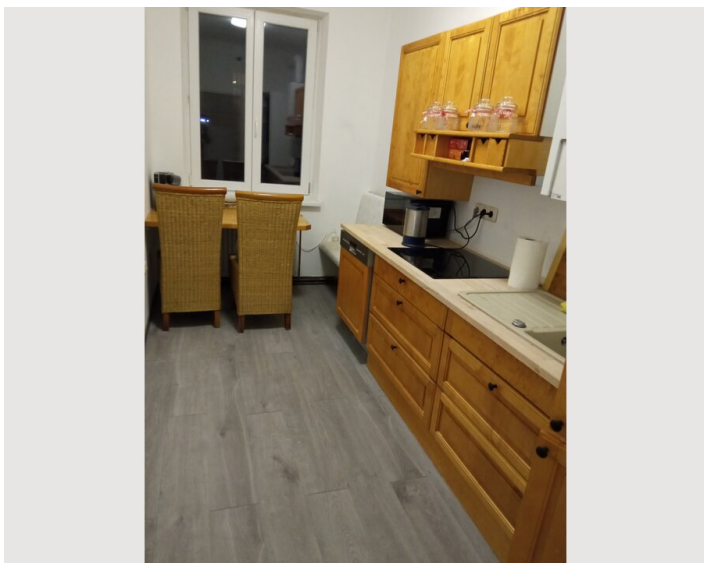
### Kitchen

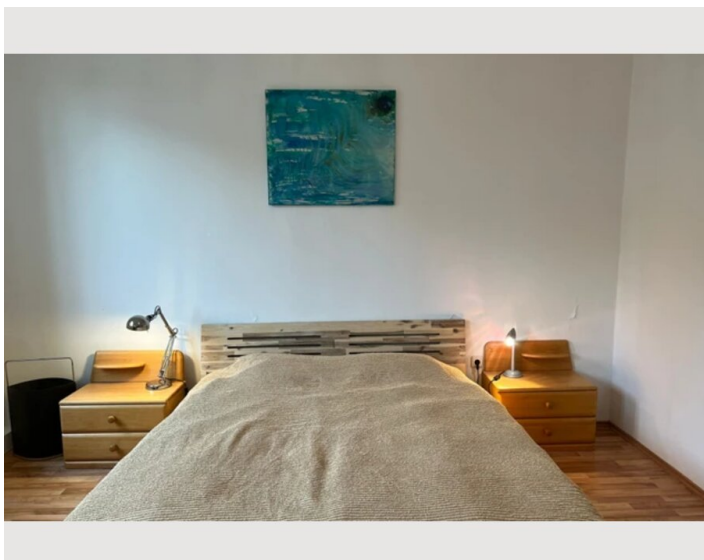
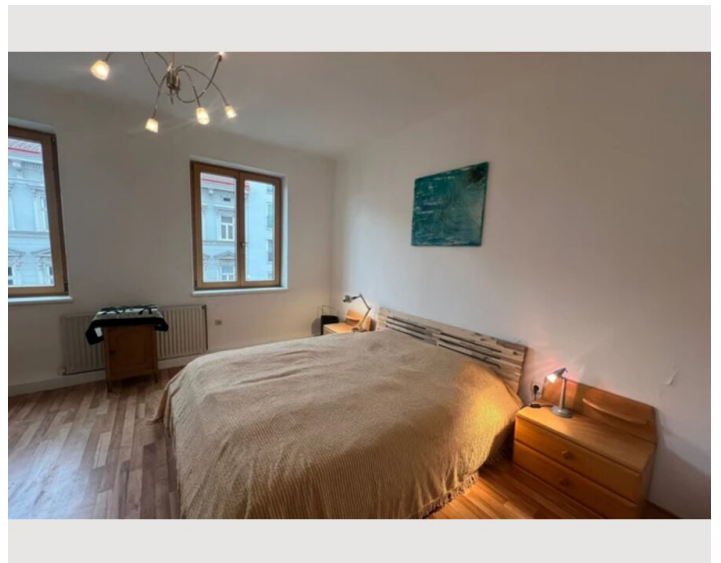
- Private kitchen
- Glasses/Tableware
- Dishwasher
- Cooking utensils
- Espresso machine
- Microwave

## Informations

- Suitable for children
- Short-term parking zone subject to a charge
- Private entrance
- Smoking not allowed
- Desk/Workplace
- Pets on request

## Picture gallery







## Infrastructure



U 1 Metro- station Keplerplatz

The apartment is located directly on the Favoritenstrasse pedestrian zone and around 200 meters from the market on Viktor Adlerplatz. A large number of supermarkets, retail shops and market stalls are within a few minutes walking distance. The house is about 50 meters from the exit to the Keplerplatz underground station, one subway station from Vienna Central Station. The central transportation hub Karlsplatz/Staatsoper is three stops away on the U1. You can reach the WIG-Oberlaa recreation area and the Oberlaa thermal baths in around 15 minutes by subway and streetcar. The famous Belvedere Palace can be reached on foot in about 15 minutes, by subway in less than 10 minutes.

## Location

