



STUDIO APARTMENT, 4020 LINZ

Apartment Nr. 11 near center

Object number: GIIW1

[View and rent online](#)

This comfortably furnished apartment was recently renovated, fully equipped and offers you everything you need for comfortable living on 32 m². Just a few minutes from the train station.

Period	21/12/2025 - 21/01/2026
Number of persons	2
Total incl. VAT.	€ 1.368,88
Security deposit	€ 1.000,00



Living space

32m²



Maximum occupancy

2 Persons



Complete accommodation [?]

1 Private bathroom 1 Living-Sleepingroom



4. floor



Check-in

14:00 - 22:00 Clock



Check-out

11:00 - 12:00 Clock

Sleeping options

Living and sleeping



1x Double bed (1,60 m x 2 m)

Description of accommodation

Bathroom with shower and washing machine

Fitted kitchen with ceramic hob, oven and refrigerator

Equipment & Features



Basic equipment

- Garden sharing
- TV
- Bedclothes
- Private toilet
- Vacuum cleaner
- Cleaning utensils
- Internet/Wifi
- Private washing machine
- Towels
- Parking on the road without time limit without any cost
- Iron & ironing board
- Hairdryer



First supply

- Toilet paper
- Soap
- shampoo
- Nespresso capsules



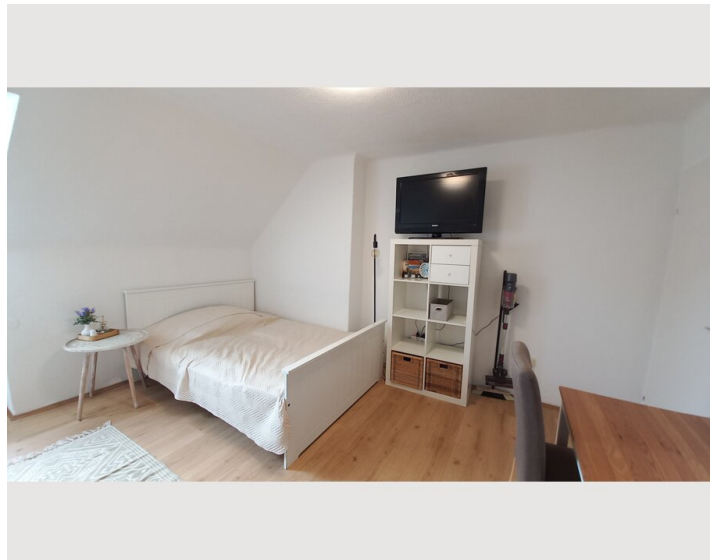
Kitchen

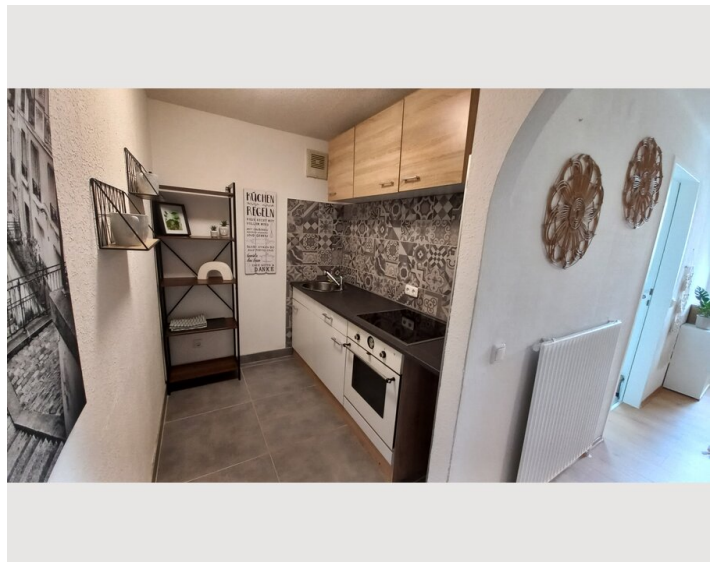
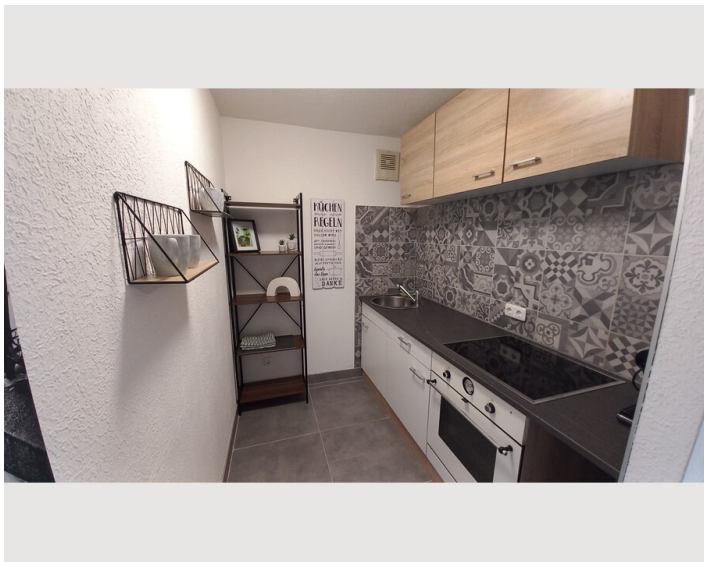
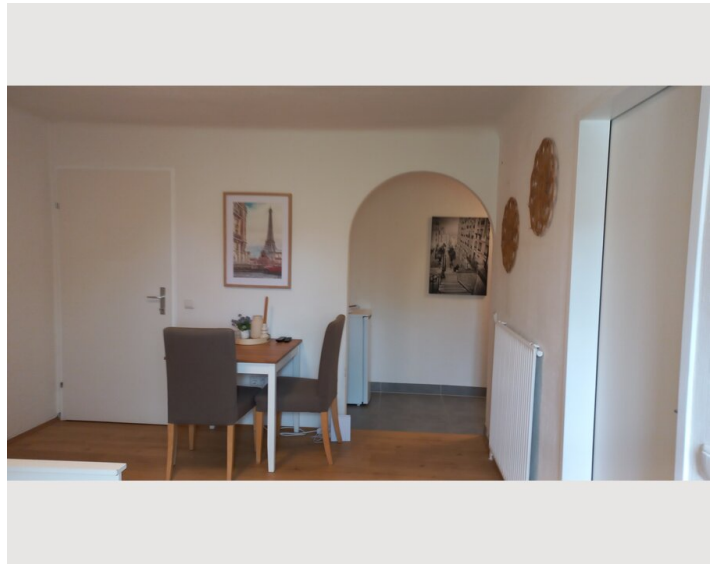
- Private kitchen
- Glasses/Tableware
- Cooking utensils
- Espresso machine

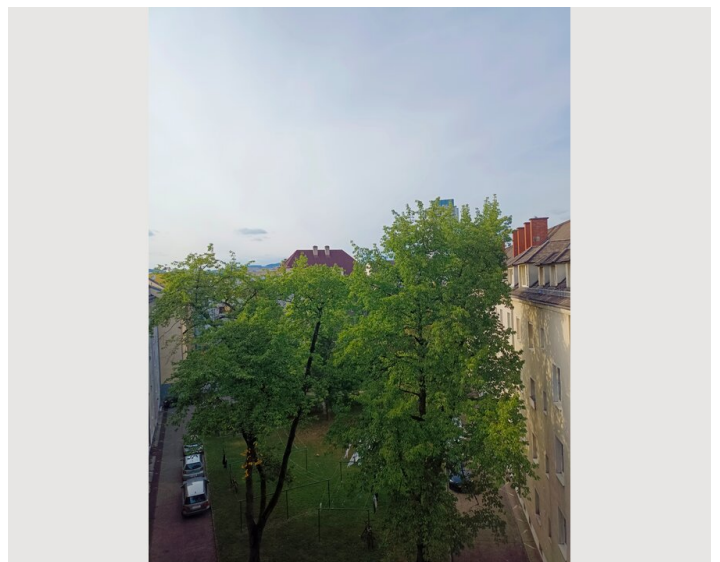
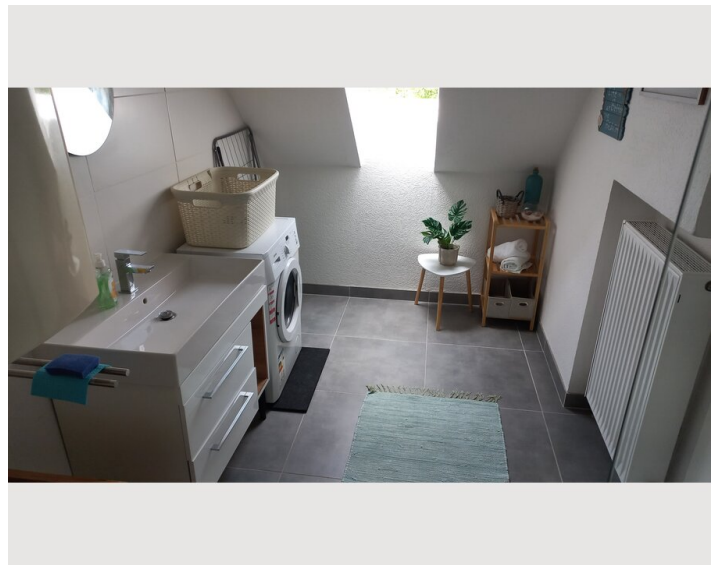
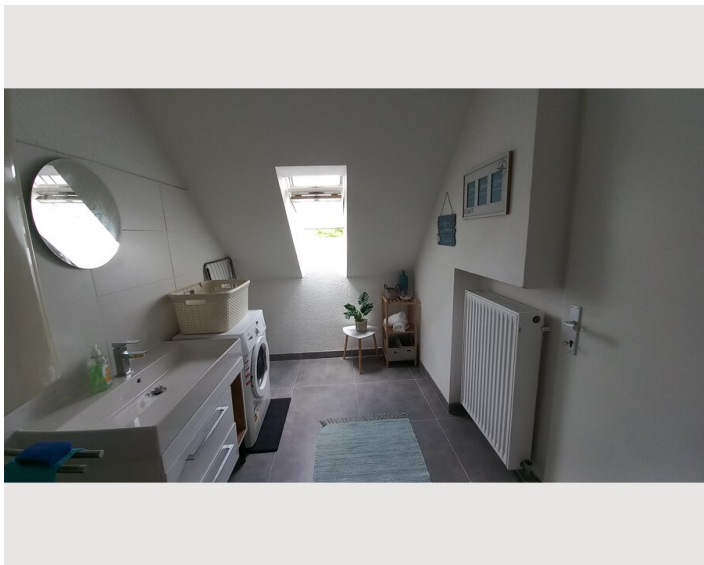
Informations

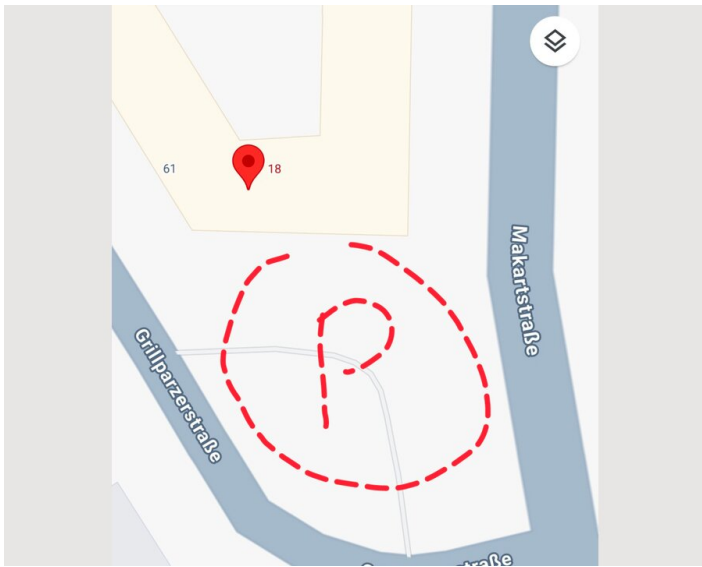
- Smoking not allowed
- Pets on request
- Bicycle room free of charge
- Desk/Workplace
- Regular cleaning at extra cost

Picture gallery









Infrastructure



5 min. by tram



2 min. to Wienerstrasse



1 min. across the street



5 min. by tram

The apartment is in a privileged location in the heart of Linz. It benefits from its proximity to important educational and economic centers:

Educational institutions: The BFI and WIFI, two important educational and further training institutions in Linz, are just a few minutes' walk away.

Transport connections: Optimal connection to the public transport network, with quick access to main traffic arteries and bus stops.

Shopping and dining options: A variety of shopping options, restaurants and cafés are easily accessible in the immediate area.

Leisure and Recreation: The location offers an ideal combination of urban flair and recreational opportunities, with access to parks and recreational areas.

Economic center: As part of Linz's center, the apartment is ideally positioned to benefit from the city's vibrant economic and cultural scene.

Location

