



3 ROOM APARTMENT, 1150 VIENNA

## Apartment at the park

Object number: PHUC1

[View and rent online](#)

<b>Period</b>	09/12/2025 - 09/01/2026
<b>Number of persons</b>	2
<b>Total</b> incl. VAT.	€ 2.585,94
Security deposit	€ 1.900,00

Bright apartment with balcony over the entire length in the last lift floor with a clear beautiful view of the park up to Schönbrunn.



### Living space

70m<sup>2</sup>



### Maximum occupancy

2 Persons



### Complete accommodation <sup>?</sup>

1 Private bathroom 1 Separated bedroom



### 5. floor

Elevator available



### Check-in

08:00 - 20:00 Clock



### Check-out

08:00 - 20:00 Clock

## Sleeping options

### Sleeping room



1x Double bed (1,60 m x 2 m)

## Descripton of accommodation

Our daughter is currently traveling abroad for longer and longer. During their absence, you have the opportunity to enjoy the approx. 70 m2 sunny apartment with balcony over the entire length in the last lift floor with a beautiful view of the park up to Schönbrunn. The apartment consists of an anteroom, bathroom with toilet, a bedroom with TV and a large living room with kitchen. The third room can be used either as a small office or for an additional bed. Garage in the house possible for an extra charge.

## Equipment & Features



### Basic equipment

- Terrace
- TV
- Bedclothes
- Private toilet
- Vacuum cleaner
- Cleaning utensils
- Internet/Wifi
- Private washing machine
- Towels
- Garage
- Iron & ironing board
- Hairdryer



### First supply

- Toilet paper
- Soap
- shampoo
- Nespresso capsules



### Kitchen

- Private kitchen
- Glasses/Tableware
- Dishwasher
- Cooking utensils
- Espresso machine
- Microwave

## Informations

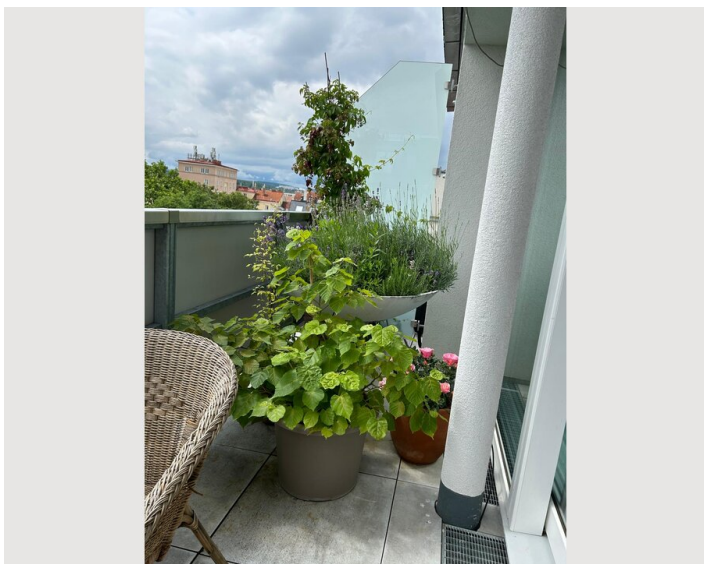
- Smoking not allowed
- Private entrance
- Regular cleaning at extra cost
- Desk/Workplace
- Pets forbidden
- Bicycle room free of charge

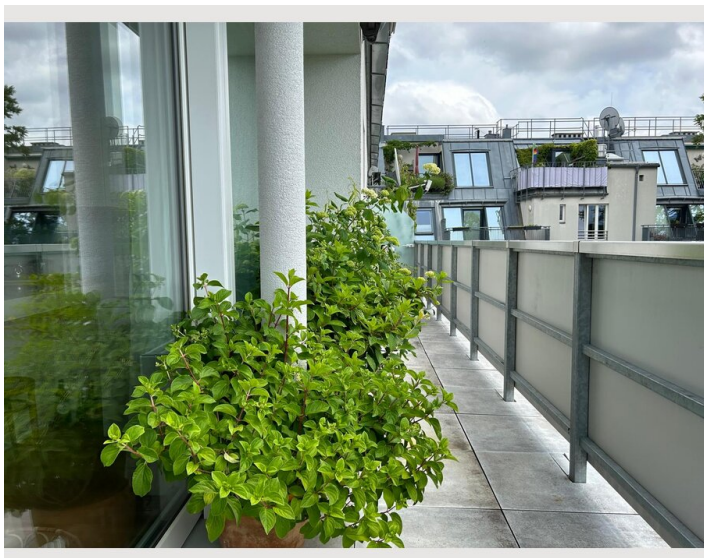
## Additional services

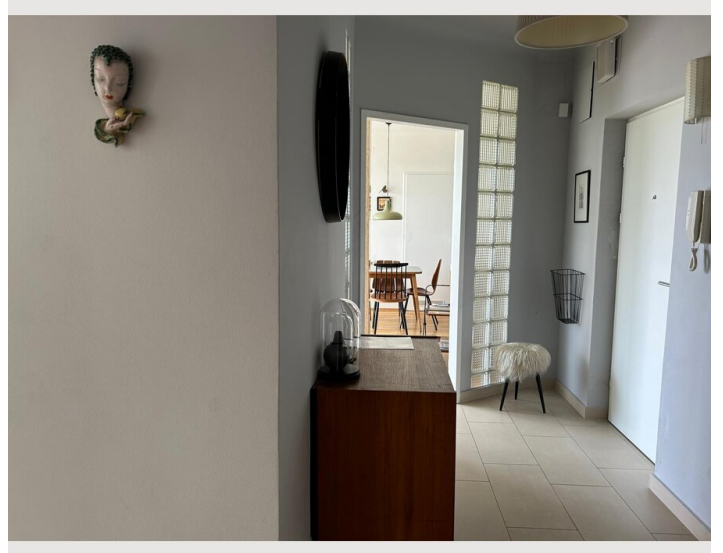
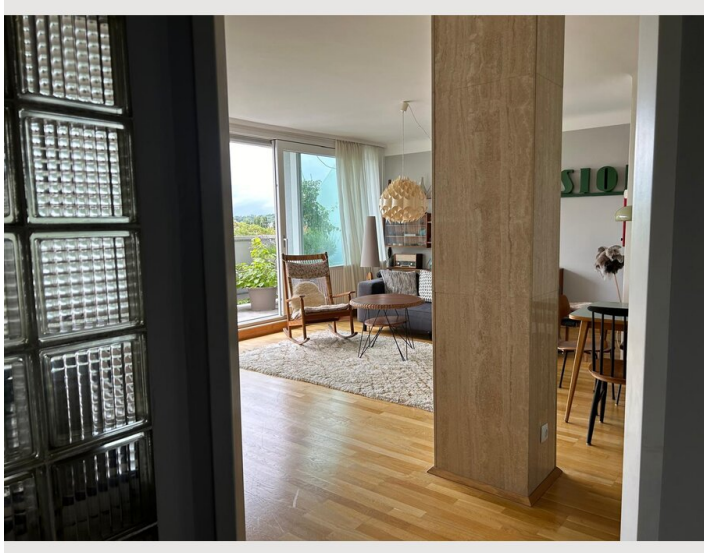
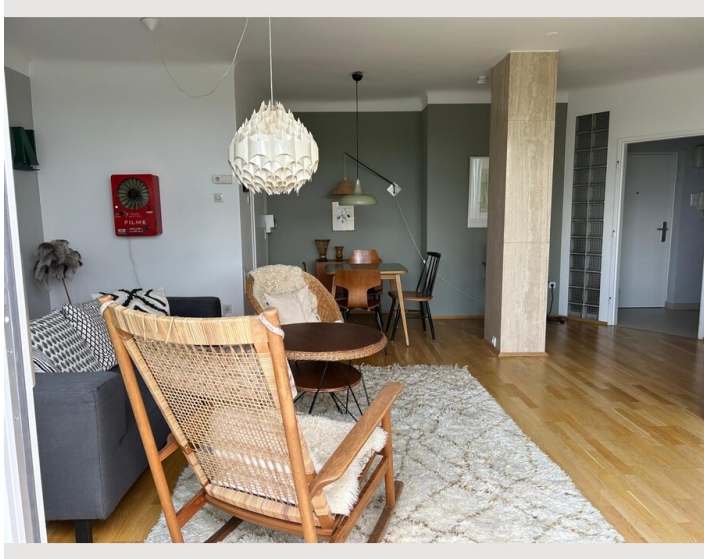
- Parking garage (€ 130,00)

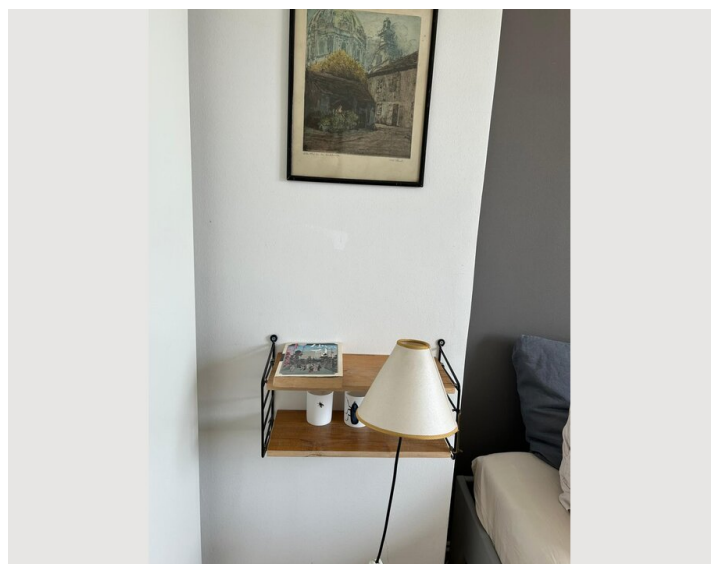
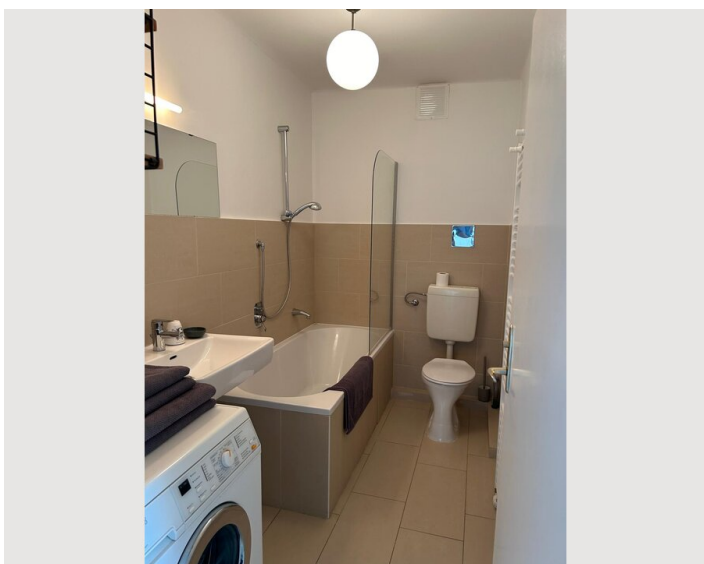
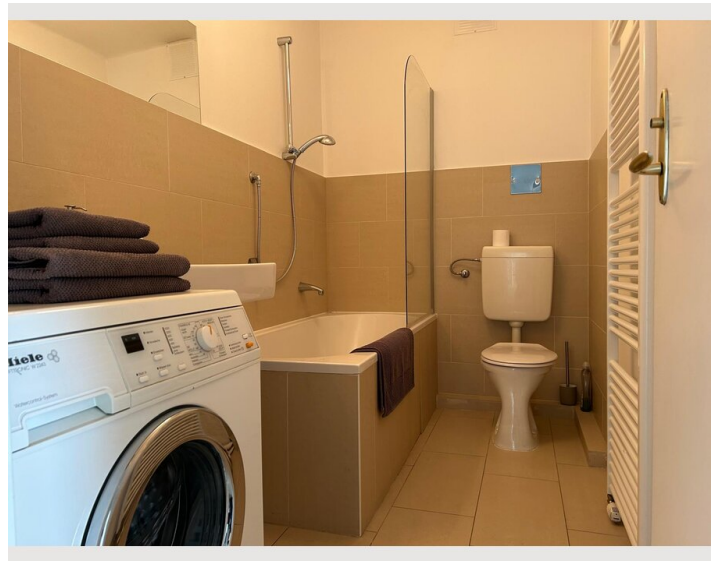
All prices are gross per month - billing is done directly with the lessor.

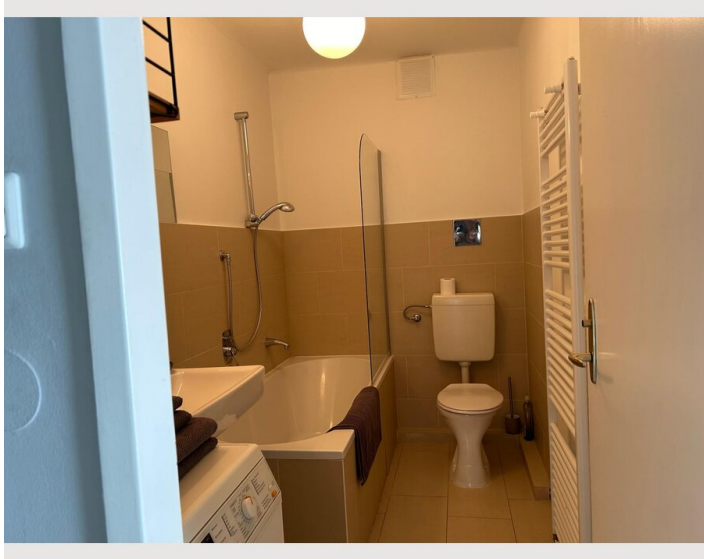
## Picture gallery











## Infrastructure

 5 minutes away

The apartment is located in the immediate vicinity of Schwendermarkt/ Reindorfasse. Mariahilferstrasse and Schönbrunn Palace, as well as the Westbahnhof (underground, tram) and thus the connection to the center can be reached quickly. Tram stops and subway are within walking distance.

## Location

